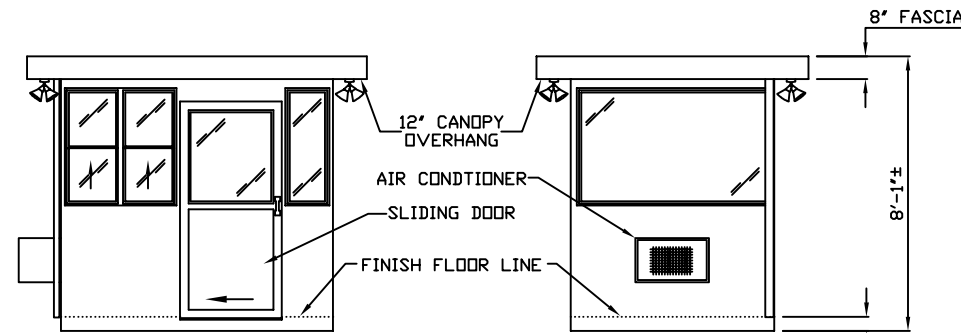


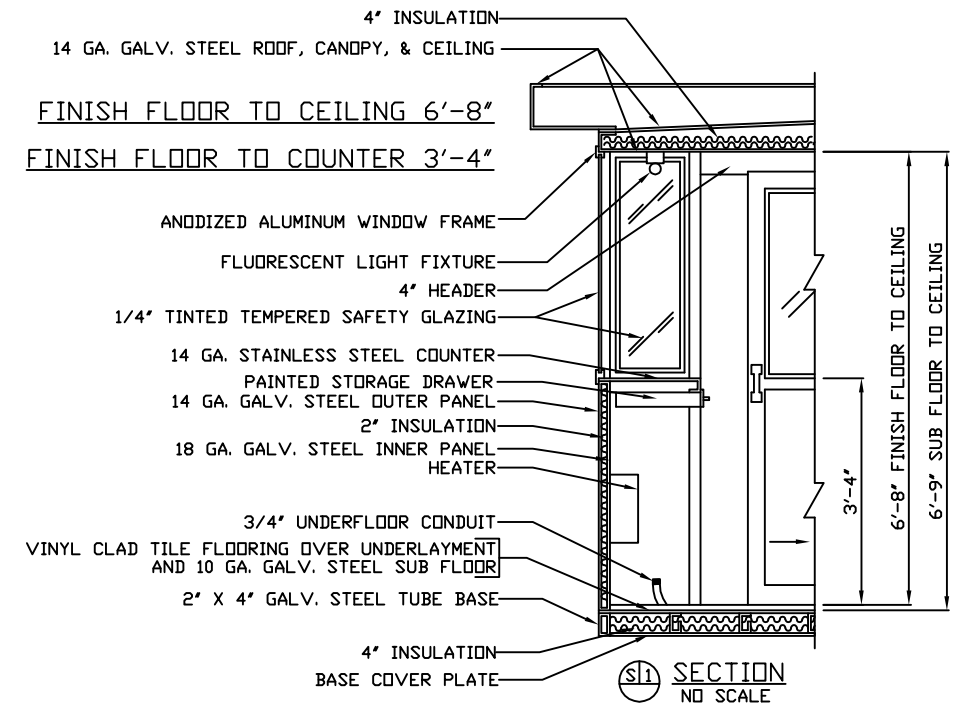
E1 ELEVATION

E2 ELEVATION

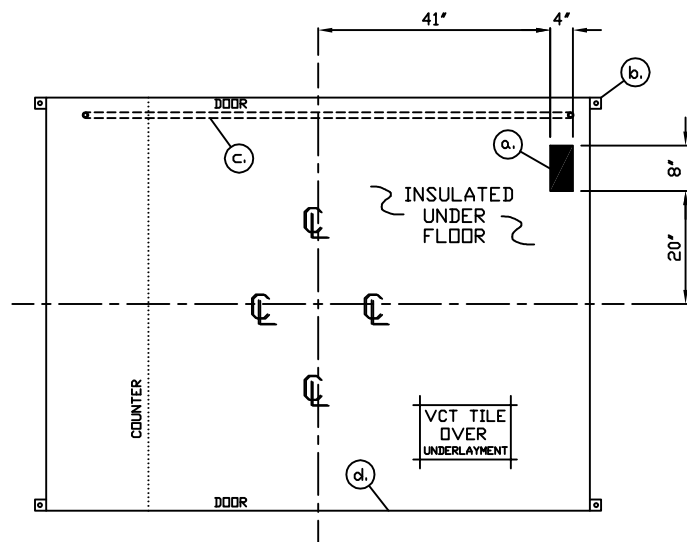


E3 ELEVATION

E4 ELEVATION

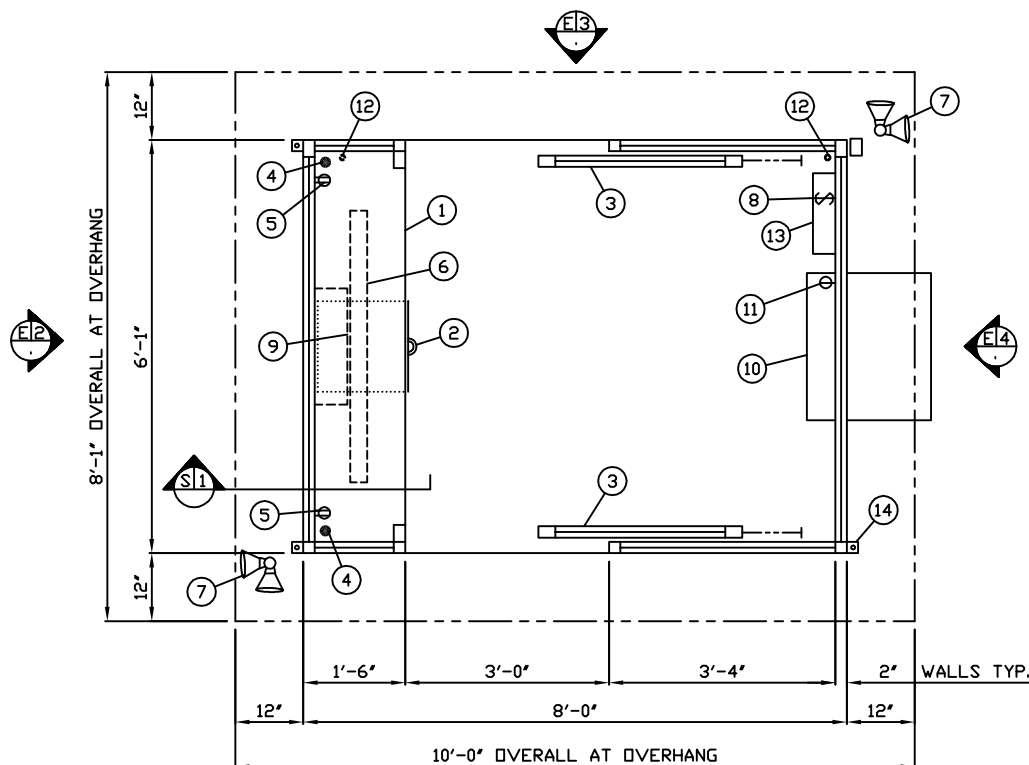


S1 SECTION
NO SCALE



NOTE: PROVIDE 120/240V, 1Ø-3 WIRE SERVICE WITH GROUND.
SERVICE ENTRANCE/ANCHOR BOLT LAYOUT

- a. SLOT IN FLOOR FOR ELECTRICAL SERVICE ENTRANCE TO C.B. PANEL ABOVE
- b. 2" X 2" X 1/4" MIN. ANCHOR CLIP WITH 3/4" ANCHOR BOLT HOLE, 4-REQ'D. ONE EACH CORNER. ANCHOR BOOTH AFTER FINAL LOCATION. ANCHOR BOLTS NOT INCLUDED
- c. 3/4" RIGID CONDUIT RACEWAY IN BASE STUBBED ABOVE FLOOR AT EACH END UNDER COUNTER AND NEAR C.B. PANEL.
- d. OUTER EDGE OF BASE

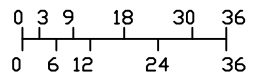


E1 PLAN VIEW

1. COUNTER- 18" DEEP 304-2B STAINLESS STEEL MOUNTED 40" ABOVE FINISH FLOOR.
2. PAINTED STORAGE DRAWER BENEATH COUNTER.
3. DOOR- 36" WIDE, SLIDING STEEL WITH WEATHER-STRIPPING, BALL BEARING HANGERS, SAFETY GLAZING, HEAVY DUTY TRACK, HOOK BOLT LOCK, & HARDWARE, 2-REQ'D.
4. HOLE IN COUNTER FOR DROP CORDS, 2-REQ'D.
5. GFCI DUPLEX RECEPTACLES- MOUNTED BELOW COUNTER, 2-REQ'D.
6. LIGHT- FLUORESCENT LIGHT FIXTURE
7. DUPLEX FLOOD LIGHT WITH 75 WATT LAMPS, 2-REQ'D.
8. LIGHT SWITCH FOR EXTERIOR FLOOD LIGHTS.
9. HEATER- 240V./5,600 WATT FAN FORCED WITH INTEGRAL THERMOSTAT CONTROL.
10. AIR CONDITIONER- 120V/8,000 BTU COOL ONLY WITH INTEGRAL THERMOSTAT CONTROL.
11. SINGLE RECEPTACLE FOR AIR CONDITIONER.
12. 3/4" RIGID CONDUIT UNDER FLOOR STUBBED ABOVE FLOOR AT EACH END.
13. C.B. PANEL- 12 SPACE 120/240V, 1Ø-3 WIRE WITH GROUND BAR. 100 AMP MAIN BREAKER IS INCLUDED.
14. ANCHOR CLIP- 2" X 2" X 1/4" MIN. STEEL WELDED TO BASE AT GRADE WITH 3/4" ANCHOR BOLT HOLE, 4-REQ'D. ANCHOR BOOTH AFTER FINAL LOCATION. ANCHOR BOLTS NOT INCLUDED.

NOTE: PAR-KUT BOOTHS ARE OF SINGLE UNIT WELDED GALVANIZED STEEL CONSTRUCTION, FACTORY ASSEMBLED AND DELIVERED SET UP. FAILURE TO SECURELY ANCHOR BOOTH MAY RESULT IN OVERTURNING OF UNIT AND SERIOUS INJURY TO OCCUPANT.

- A. GLAZING TO BE 1/4" TINTED TEMPERED SAFETY GLAZING SET IN ANODIZED ALUMINUM WINDOW FRAMES. OPERATING WINDOWS WILL BE PROVIDED WITH INSECT SCREENS.
- B. PAINT- A RUST INHIBITIVE PRIMER WITH AN INDUSTRIAL FINISH.
- C. ELECTRICAL- ALL WIRING BY PAR-KUT TO BE #12(MIN) STRANDED COPPER, THHN ENCLOSED IN 1/2"(MIN) E.M.T. PER NATIONAL ELECTRIC CODE. FITTINGS, FIXTURES & DEVICES ARE U.L. LABELED. ALL WIRING TO TERMINATE AT C.B. PANEL. ALL CIRCUITS HAVE GREEN GROUND WIRE.
- D. BOOTH WILL HAVE A 12" CANOPY OVERHANG ON ALL SIDES.
- E. LIFTING RING(S) ARE PROVIDED IN ROOF.
- F. NO ON SITE WORK BY PAR-KUT.



SCALE BAR

NOTE: ELEVATIONS 2:1

NOTE: THIS PRINT AND DESIGN ARE THE PROPERTY OF PAR-KUT INTERNATIONAL, INC. IT MUST NOT BE REPRODUCED IN ANY MANNER, NOR SHALL IT BE SUBMITTED TO OUTSIDE PARTIES FOR EXAMINATION WITHOUT OUR CONSENT. IT SHALL BE USED ONLY AS A MEANS OF REFERENCE TO WORK DESIGNED AND FURNISHED BY PAR-KUT. PAR-KUT RESERVES THE RIGHT TO MAKE CHANGES TO DESIGN FOR ENGINEERING PURPOSES WITHOUT NOTICE. REVISIONS MAY NOT BE NOTED.

PAR-KUT INTERNATIONAL, INC.
40961 Production Drive
Harrison Twp, Mich.
48045-1351
PH: (586) 468-2947



DWG# 03-106 SHEET A-1

A. J. WRIGHT
LAUTH PROPERTY GROUP
SOUTH BEND, IN

| GENERAL NOTES | | |
|--|--|--|
| PAINT COLOR: MIST GRAY #DC2301 | | |
| GLAZING TINT COLOR: GRAY | | |
| VINYL CLAD TILE COLOR: COMPLIMENTARY COLOR | | |

| PAR-KUT INTERNATIONAL, INC. | | |
|-----------------------------|--------------------------------|-----------|
| PD# VERBAL | DRAWN BY | REVISED |
| SCALE NTS | DNE | 11-7-2014 |
| DATE 2-5-2003 | SIZE 6'-1" X 8' | QTY 1 |
| CHK'D BY: | SALES REPRESENTATIVE JIM SMITH | |