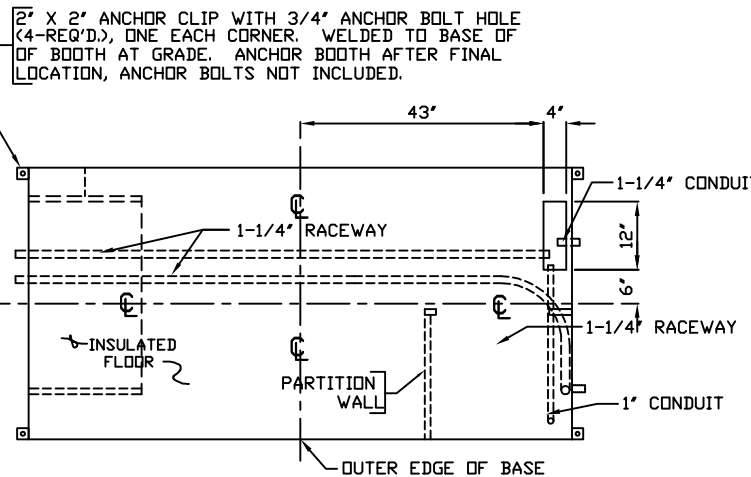


1. COUNTER- 24" DEEP 14GA. 304-2B STAINLESS STEEL. 40" A.F.
2. DRAWER- MOUNTED BENEATH COUNTER 24" W X 18" L X 4" D INSIDE DIMENSIONS.
3. DOUBLE ACTION DOOR- 28" WIDE, SLIDING STEEL WITH SAFETY GLAZING, WEATHERSTRIPPING, BALL BEARING HANGERS, HEAVY DUTY TRACK, MAXIMUM SECURITY HOOKBOLT LOCK WITH REMOVABLE KEY CYLINDER, INSIDE SASH LOCK ON HORIZONTAL SLIDING WINDOW & HARDWARE.
4. DOOR- 28" WIDE, SLIDING STEEL WITH SAFETY GLAZING, WEATHERSTRIPPING, BALL BEARING HANGERS, HEAVY DUTY TRACK, MAXIMUM SECURITY HOOKBOLT LOCK WITH REMOVABLE KEY CYLINDER & HARDWARE.
- 5a. QUADPLEX OUTLET MOUNTED BELOW COUNTER, 2-REQ'D.
- 5b. QUADPLEX OUTLET MOUNTED IN CLOSET, 2-REQ'D.
- 5c. DUPLEX OUTLET MOUNTED IN CLOSET, 2-REQ'D.
6. 2" HOLE IN COUNTER WITH RUBBER GROMMET FOR DROP CORDS, 2-REQ'D.
7. LIGHT- RECESSED FLUORESCENT LIGHT FIXTURE, 2-REQ'D.
- 7A. LIGHT SWITCH FOR BOTH LIGHTS.
8. HEATER- QMARK LFK-484 208V./3600W. FAN FORCED WITH WALL MOUNTED THERMOSTAT CONTROL, 2-REQ'D. HEATER IN CLOSET WALL TO BE 8" - 12" A.F.
9. AIR CONDITIONER- 120V./13,500BTU ROOF MOUNTED WITH INTEGRAL THERMOSTAT CONTROL.
10. 4" X 4" J-BOX FOR FUTURE GATE CONTROL MOUNTED 60" A.F.F. WITH RACEWAY TO J-BOX NEAR FLOOR WITH RACEWAY TO J-BOX AT CB PANEL.
11. J-BOX IN CEILING CENTERED OVER COUNTER, WITH TWO 3/4" CONDUITS TO CLOSET.
12. 4" X 4" J-BOX WITH 1-1/4" RACEWAY TO NIPPLE AT FRONT OF BASE AND LOW ON REAR OF BOOTH AT CLOSET FOR FUTURE COMMUNICATIONS SERVICE WITH J-BOX NEAR CASHIER AREA. 60" A.F.
13. J-BOX IN WALL WITH 1/2" RACEWAY STUBBED UP IN CORNER OF CLOSET AT FLOOR.
14. C.B. PANEL- 120/208V. 1Ø-3W. NO MAIN BREAKER 16 SPACE WITH GROUND BAR & 1-1/4" RIGID NIPPLE TO FRONT OF BASE & AN ALTERNATE LOW ON REAR WALL VIA A J-BOX IN CLOSET WALL FOR SERVICE ENTRANCE. KEEP ELECTRICAL AND COMMUNICATIONS RACEWAY'S SPACED EQUALLY ON BOTH ENDS. MOUNT PANEL 2" BELOW SILL.
15. ANCHOR CLIP- 2" X 2" STEEL WELDED TO BASE AT GRADE WITH 3/4" ANCHOR BOLT HOLE. 4-REQ'D, ONE EACH CORNER. ANCHOR BOOTH AFTER FINAL LOCATION. ANCHOR BOLTS NOT INCLUDED.
16. CLOSET- 20" WIDE, SWINGING ALUMINUM LOCKING DOOR, (4) 18" DEEP SHELVES.
17. 1-1/2" HOLES IN CLOSET SHELVES WITH RUBBER GROMMET FOR DROP CORDS. 3-REQ'D
18. J-BOX IN CEILING WITH A 3/4" CONDUIT TO J-BOX IN CEILING IN CORNER OF CLOSET FOR FUTURE CCTV EQUIPMENT.
19. REMOVABLE EXTERIOR WALL PANEL TO ALLOW CUSTOMER TO LOCATE FUTURE RECEIPT DISPENSERS AND OTHER EQUIPMENT IN THE FIELD FASTENERS ARE ACCESSIBLE FROM THE INTERIOR OF THE WALL.

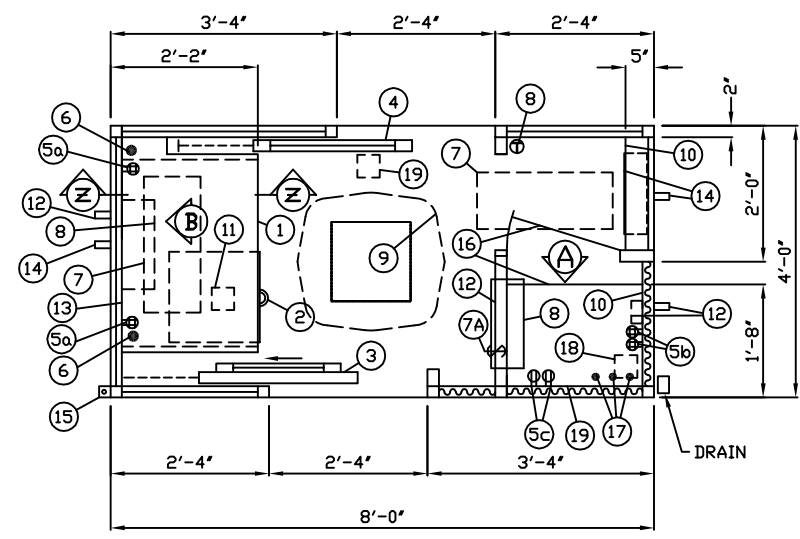


NOTE: PROVIDE 120/208V. 1Ø-3W. SERVICE WITH GROUND

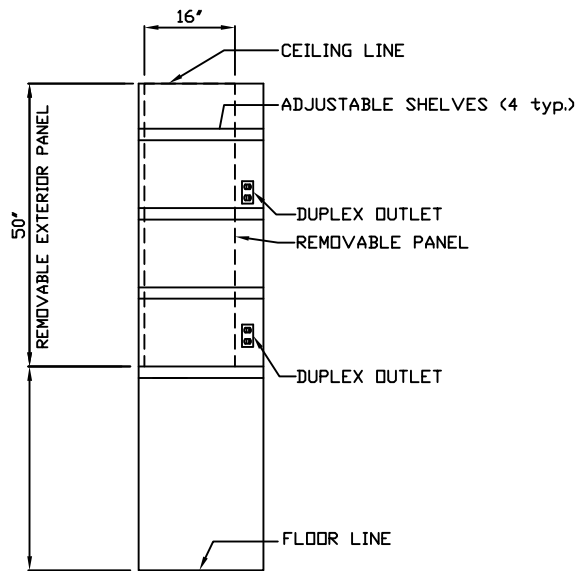
ANCHOR BOLT LAYOUT

NOTE: PAR-KUT BOOTHS ARE OF SINGLE UNIT WELDED GALVANIZED STEEL CONSTRUCTION, FACTORY ASSEMBLED AND DELIVERED SET UP. FAILURE TO SECURELY ANCHOR BOOTH MAY RESULT IN OVERTURNING OF UNIT AND SERIOUS INJURY TO OCCUPANT.

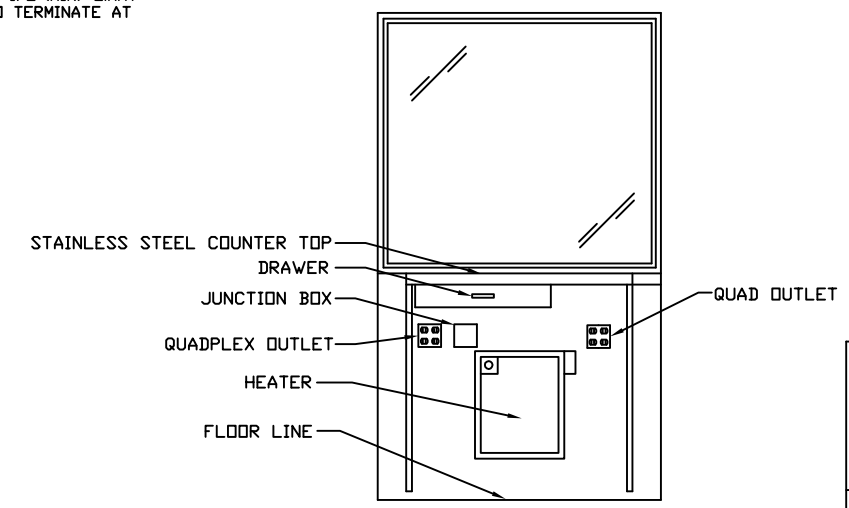
- A. ALL GLAZING TO BE 1/4" GRAY TINTED TEMPERED SAFETY GLASS SET IN MILL FINISH ALUMINUM WINDOW FRAMES. ALL WINDOWS ARE FIXED, NON OPERABLE.
- B. PAINT- RUST INHIBITIVE EPOXY PRIMER WITH AN INDUSTRIAL ENAMEL FINISH.
- C. ELECTRICAL- ALL WIRING BY PAR-KUT TO BE #12(MIN) STRANDED COPPER, TYPE THHN ENCLOSED IN 1/2"(MIN) E.M.T. PER NATIONAL ELECTRIC CODE. FITTINGS, FIXTURES AND DEVICES ARE U.L. LISTED. ALL WIRING TO TERMINATE AT C.B. PANEL. ALL CIRCUITS HAVE GREEN GROUND WIRE.
- D. BOOTH TO HAVE A 3" CANOPY OVERHANG ALL SIDES.
- E. BOOTH FLOOR TO BE INSULATED.
- F. LIFTING RING(S) PROVIDED IN ROOF.
- G. NO ON SITE WORK BY PAR-KUT.



PLAN VIEW



CLOSET DETAIL "A" NO SCALE



DETAIL "B" NO SCALE



NOTE: THIS PRINT AND DESIGN ARE THE PROPERTY OF PAR-KUT INTERNATIONAL, INC. IT MUST NOT BE REPRODUCED IN ANY MANNER, NOR SHALL IT BE SUBMITTED TO OUTSIDE PARTIES FOR EXAMINATION WITHOUT OUR CONSENT. IT SHALL BE USED ONLY AS A MEANS OF REFERENCE TO WORK DESIGNED AND FURNISHED BY PAR-KUT. PAR-KUT RESERVES THE RIGHT TO MAKE CHANGES TO DESIGN FOR ENGINEERING PURPOSES WITHOUT NOTICE. REVISIONS MAY NOT BE NOTED.

PAR-KUT INTERNATIONAL, INC.
40961 Production Drive
Harrison Twp, Mich.
48045-1351
PH. (810) 468-2947

DWG# 01-033-44 SHEET A-1

A/E NOTES
PAINT COLOR: DARK GREEN S-W # F65938

AMBASSADOR BRIDGE
DETROIT, MI

PD# 10595	SCALE NTS	DRAWN BY A. PAGE	REVISED 11-7-2014
DATE 11-22-2000	SIZE 4' X 8'	QTY 12	
CHK'D BY:	SALES REPRESENTATIVE TOM DUEMLING		

ALL RACEWAYS DEDICATED FOR CUSTOMER USE SHALL BE 3/4" MINIMUM COUNTER TO BE STAINLESS STEEL.