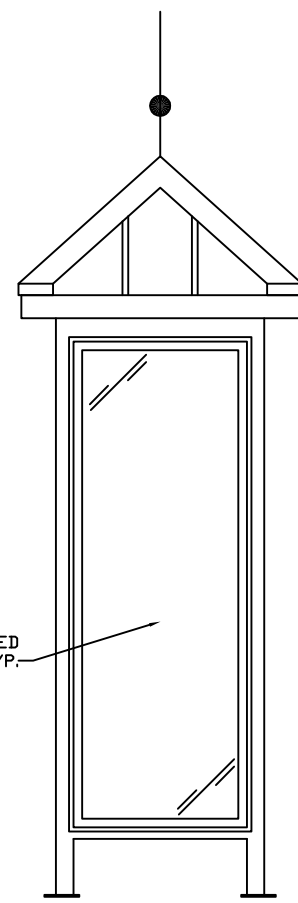
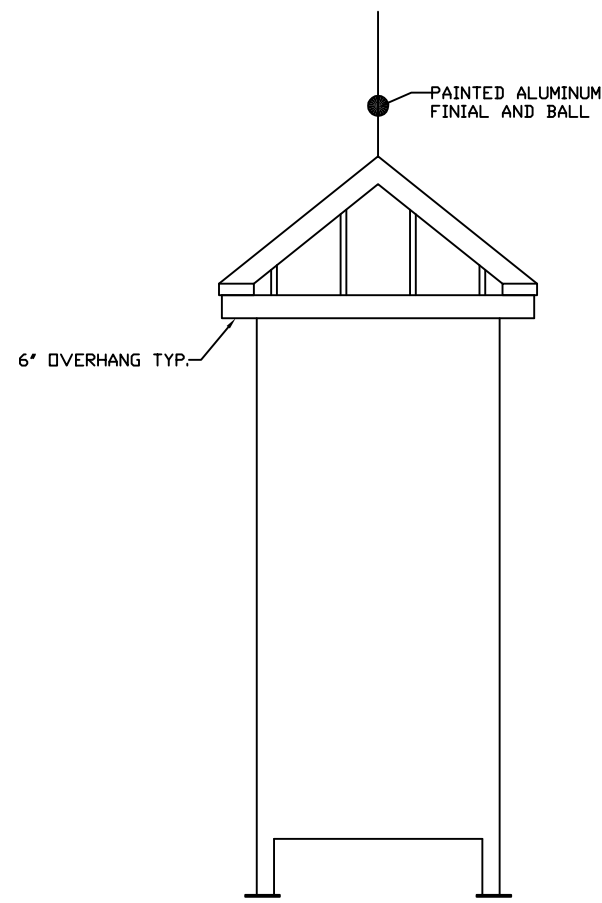


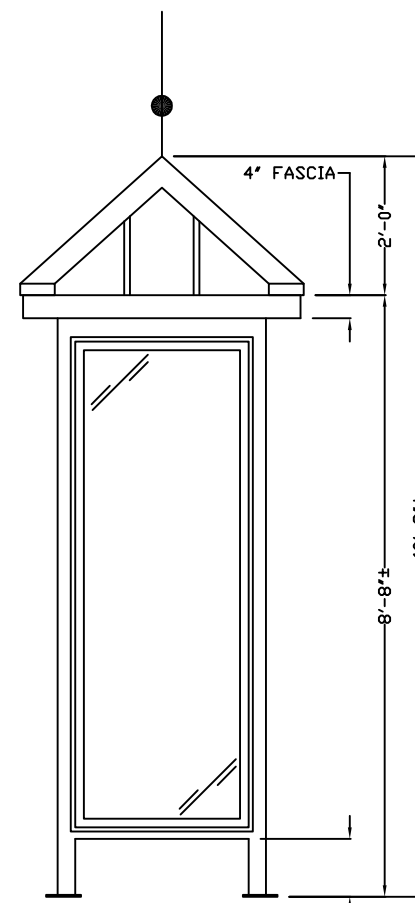
E1 ELEVATION



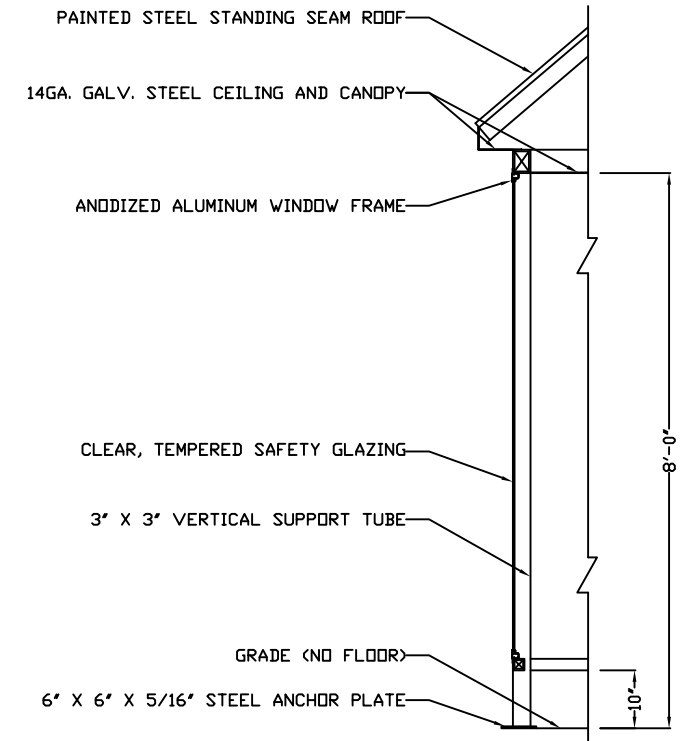
E2 ELEVATION



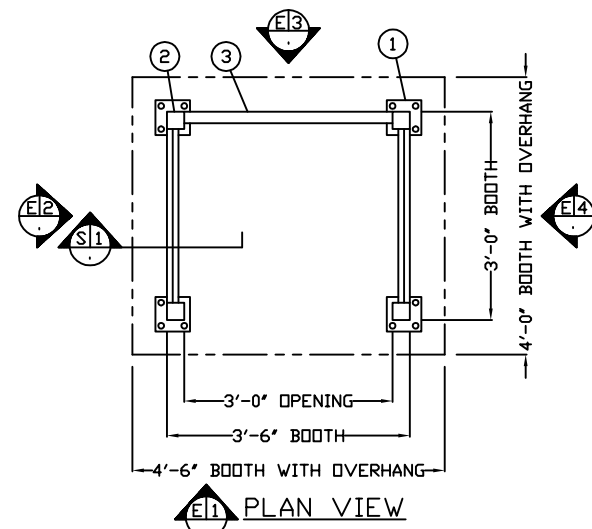
E3 ELEVATION



E4 ELEVATION



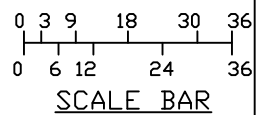
S1 SECTION
NO SCALE



E1 PLAN VIEW

1. 6' X 6' X 5/16" STEEL ANCHOR PLATE, 4-REQ'D, WITH 1" ANCHOR BOLT HOLES. ANCHOR BOOTH AFTER FINAL LOCATION. ANCHOR BOLTS NOT INCLUDED.
 2. 3' X 3' STEEL VERTICAL SUPPORT TUBES, 4-REQ'D.
 3. 14GA. GALV. PAINTED STEEL PANEL. NOT INSULATED.
- NOTE: PAR-KUT SHELTER IS OF SINGLE UNIT WELDED STEEL CONSTRUCTION, FACTORY ASSEMBLED AND DELIVERED SET UP. FAILURE TO SECURELY ANCHOR BOOTH MAY RESULT IN OVERTURNING UNIT.

- A. GLAZING- CLEAR, TEMPERED SAFETY GLAZING SET IN ANODIZED ALUMINUM WINDOW FRAMES.
- B. PAINT- A RUST INHIBITIVE PRIMER WITH AN INDUSTRIAL FINISH.
- C. BOOTH WILL HAVE A 6" CANOPY OVERHANG ON ALL SIDES.
- D. NO ON SITE WORK BY PAR-KUT.



SCALE BAR

NOTE: ELEVATIONS 2:1

NOTE: THIS PRINT AND DESIGN ARE THE PROPERTY OF PAR-KUT INTERNATIONAL, INC. IT MUST NOT BE REPRODUCED IN ANY MANNER, NOR SHALL IT BE SUBMITTED TO OUTSIDE PARTIES FOR EXAMINATION WITHOUT OUR CONSENT. IT SHALL BE USED ONLY AS A MEANS OF REFERENCE TO WORK DESIGNED AND FURNISHED BY PAR-KUT. PAR-KUT RESERVES THE RIGHT TO MAKE CHANGES TO DESIGN FOR ENGINEERING PURPOSES WITHOUT NOTICE. REVISIONS MAY NOT BE NOTED.

PAR-KUT INTERNATIONAL, INC.
40961 Production Drive
Harrison Twp, Mich.
48045-1551
PH. (586) 468-2947



DWG# 07-147 SHEET A-1

GENERAL NOTES		
PAINT COLOR: DC5517 I.M. HUNTER GREEN		
FINIAL AND BALL		

PO#	SCALE	DRAWN BY	REVISED
JW	NTS	NSG	
DATE	SIZE	QTY	
5-8-2007	3' X 3'-6"	1	
CHK'D BY:	SALES REPRESENTATIVE		