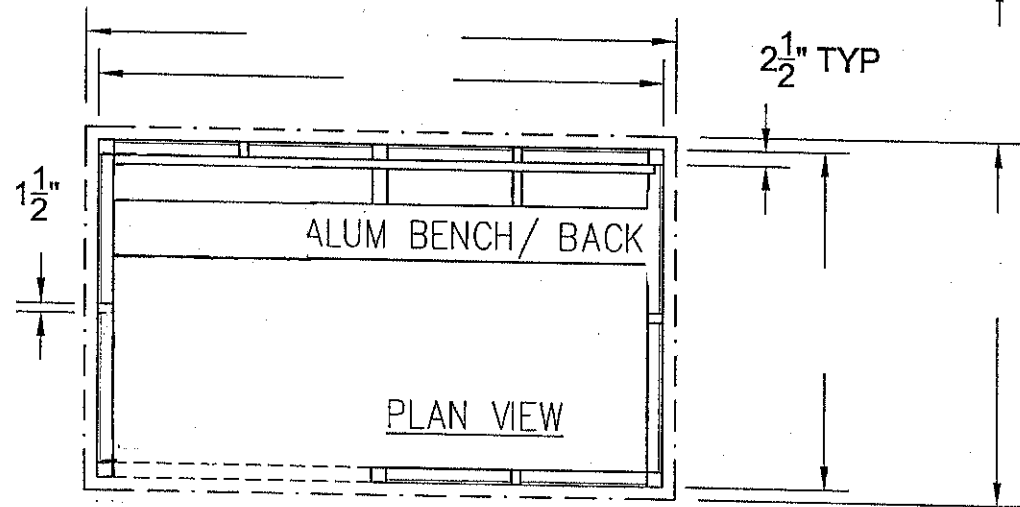
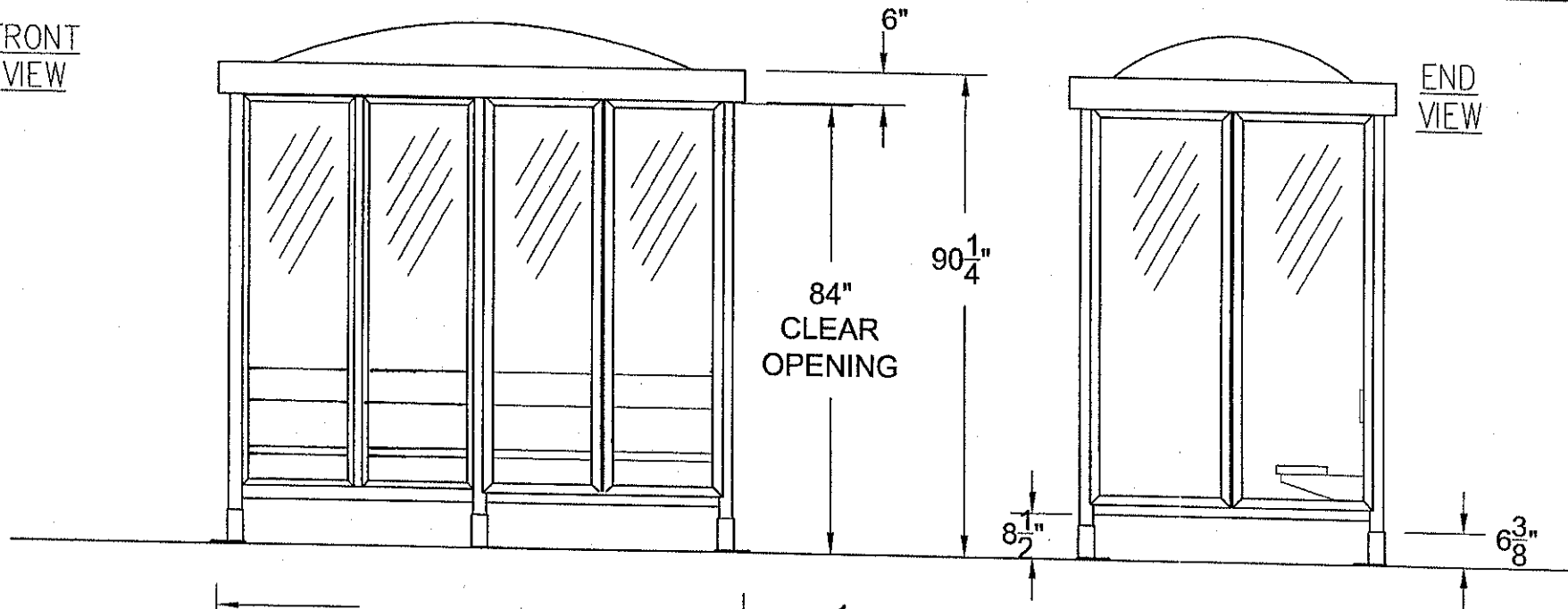


FRONT VIEW

END VIEW



NOTE:
 DESIGN IS PRELIMINARY, AND
 INTENDED TO COMPLY WITH
 SPECIFICATIONS IN ALL ASPECTS,
 AND PENDING CUSTOMER
 APPROVAL. ANY DEVIATION FROM
 SPECIFICATIONS IS UNINTENTIONAL
 AND MAY BE DISREGARDED -
 PLEASE INQUIRE WITH FACTORY.

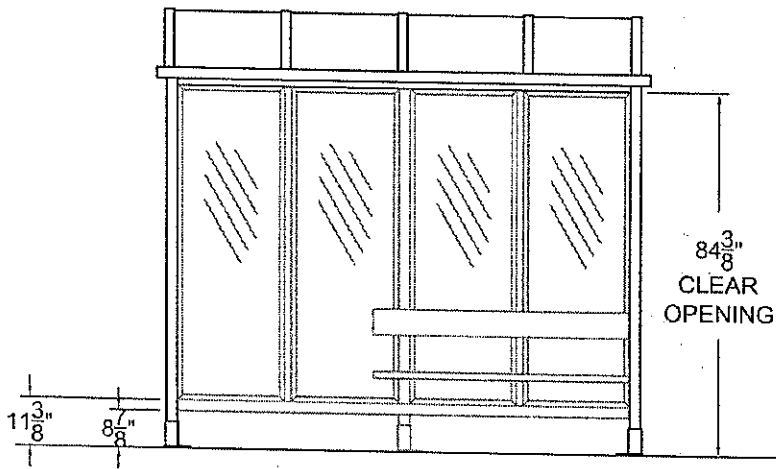
NOTES:

- Glazing is
- roof is $\frac{1}{4}$ " white translucent acrylic bubble dome
- aluminum finish is bronze anodized
- alum. bench and back

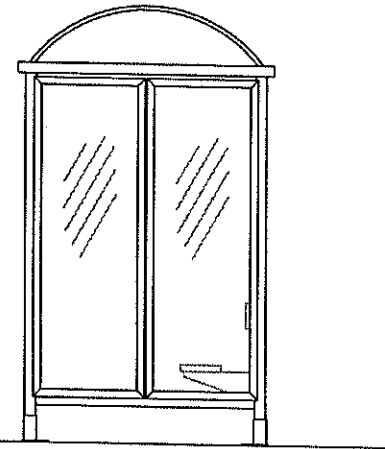
MODULAR BUILDING FLOOR PLAN / ELEVATION

DR BY:	SCALE: -NTS-
DATE:	REV:
SHEET 1 OF 1	DWG#

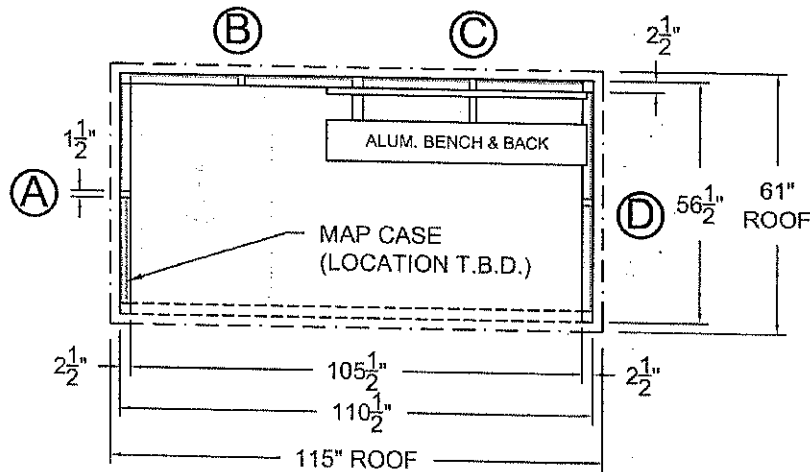
This drawing is proprietary and for the sole use of our customer and may not be copied or reproduced



FRONT ELEVATION



RIGHT SIDE ELEVATION



PLAN VIEW - NO WINDSCREEN

NOTES:
 *FINISH IS DARK BRONZE ANODIZED
 *ROOF IS BARREL-VAULT WITH 6mm P.C.S.S. GLAZING (BRONZE)
 *WALL GLAZING IS 1/4" CLEAR TEMPERED GLASS
 *ALUMINUM BENCH / BACK TO MATCH
 *MAP/SCHEDULE HOLDER
 *ALL MATERIALS ARE TO HAVE G-SHIELD APPLIED
 *DESIGN IS PRELIMINARY, AND INTENDED TO COMPLY WITH SPECIFICATIONS IN ALL ASPECTS, AND PENDING CUSTOMER APPROVAL. ANY DEVIATION FROM SPECIFICATIONS IS UNINTENTIONAL AND MAY BE DISREGARDED: PLEASE CONSULT THE FACTORY.



Tel (586) 468-2947 Fax (586) 463-6059
 www.parkut.com

THIS DRAWING IS PROPRIETARY AND FOR THE SOLE USE OF OUR CUSTOMER AND MAY NOT BE COPIED OR REPRODUCED WITHOUT PRIOR WRITTEN CONSENT
 LEAD TIME BEGINS UPON RECEIPT OF SIGNED SHOP DRAWINGS

APPROVAL SIGNATURE _____ DATE _____
 X _____

PROJECT NAME
PAR-KUT INTERNATIONAL

DESCRIPTION
SAMPLE 5' X 10' TRANSIT STYLE SHELTERS

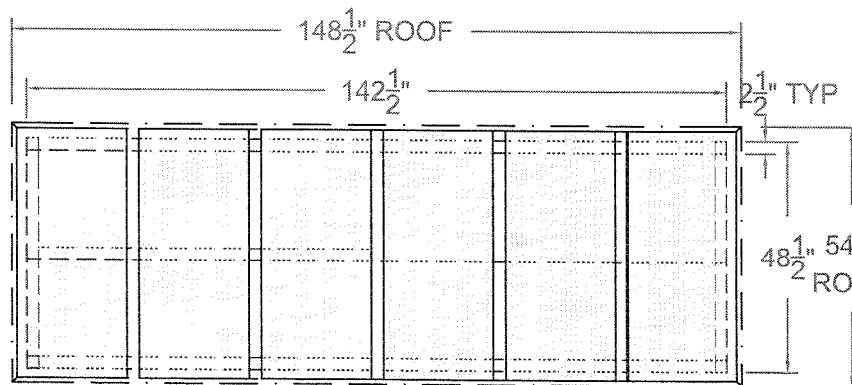
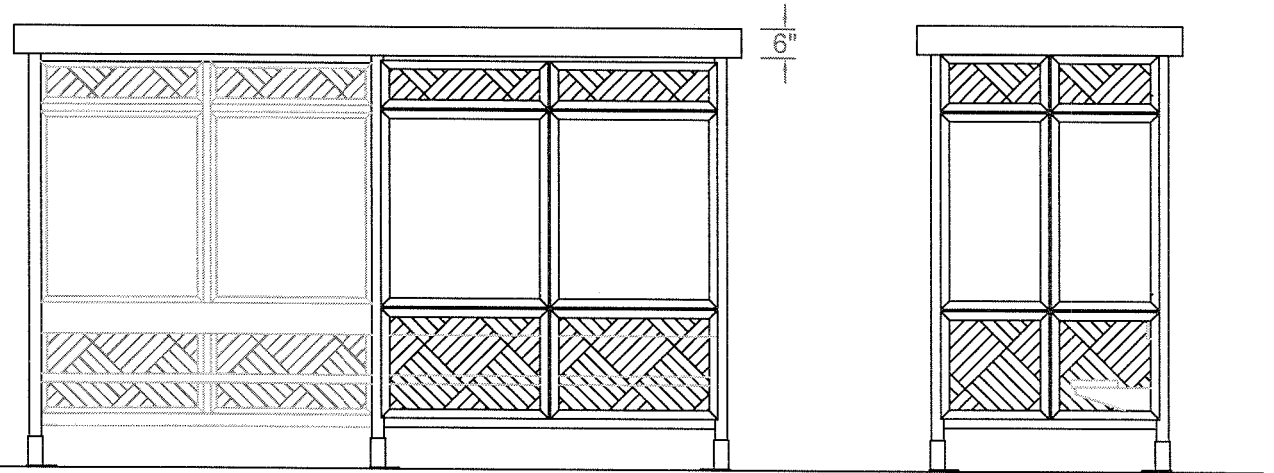
PRJT ENG	PRJT MGR	DRWG DATE	REV	DATE
SSR	ED	4-30-10		

QUANTITY	SHELTER COLOR	ROOF COLOR
(20)	BRONZE	BRONZE
SCALE	PAGE	OF
NTS	1	5
		DRWG #
		9565

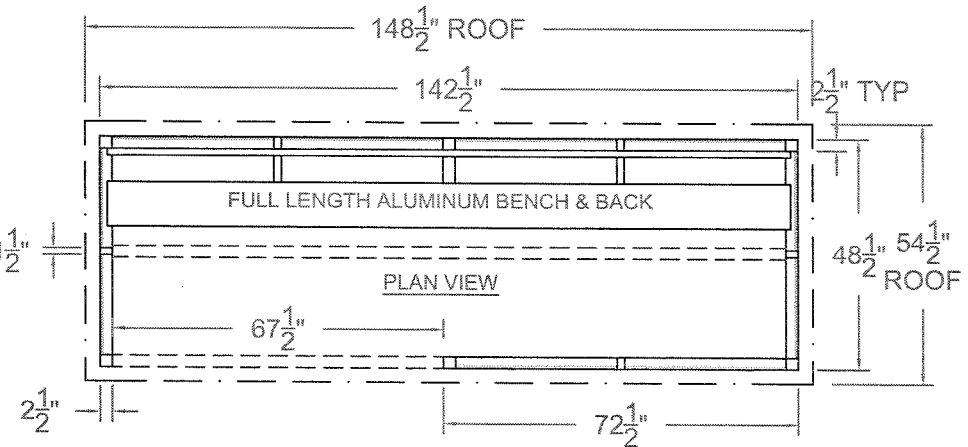
FRONT VIEW

END VIEW

-- SAMPLE DRAWING - ONLY --



TOP VIEW



PLAN VIEW

- GLAZING IS 1/4" BRONZE PANEL-15
- ROOF IS OPAL POLYCARBONATE SHEETS
- ALUMINUM FINISH IS BRONZE ANODIZED
- FULL LENGTH ALUM BENCH & BACK - TO MATCH



Tel (586) 468-2947 Fax (586) 463-6059
www.parkut.com

DESIGN IS PRELIMINARY, AND INTENDED TO COMPLY WITH SPECIFICATIONS IN ALL ASPECTS, AND PENDING CUSTOMER APPROVAL. ANY DEVIATION FROM SPECIFICATIONS IS UNINTENTIONAL AND MAY BE DISREGARDED.

PROJECT NAME									
PAR-KUT, INTERNATIONAL									
DESCRIPTION									
CUSTOM 4' x 12' SHELTER									
PRJT ENG	PRJT MGR	DRW'G DATE	REV1	REV2	SCALE	PAGE	OF	DRWNG #	
BEAV	SMcK	3-14-11			NTS	1	1	QUOTE #17629	

Pre-Engineered Modular Shelters Specification

Part I -- GENERAL

A. Description

1. This Specification covers the design, fabrication and installation of pre-engineered modular shelters.
2. The shelter shall protect against the environmental elements, and is intended to serve as a smoker's shelter, or in general as a protection from inclement weather.

B. Manufacturer's Qualifications

Shelter framework, wall and roof panels, equipment and related hardware shall be furnished by a manufacturer regularly engaged in the manufacturing of such products for a minimum of five (5) years, and shall be of premium grade material, construction, and finish.

C. Submittals

The following drawings and documentation will be furnished:

1. Shop drawings shall show wall and roof panels; details of materials, fabrication and assembly; framing profiles; fastener types and locations, flashing, and seal details if applicable.
2. Erection drawings: Provide instructions and drawings, and develop erection procedures to enable field installation or repair of shelter.
3. Manufacturer's literature and data provide manufacturer's information for wall and roof panels, and all accessories and equipment furnished.

D. Applicable Publications

The publications listed below form a part of this specification.

1. Federal Specifications (Fed. Spec.):
 - a) QQ-A-200/9C(1)....Extruded aluminum members 6063-T5
 - b) HH-I-521B....Insulation board, Thermal, Semi-Rigid Polyurethane.
 - c) TT-S-001657....Sealants, Type 1.
2. American Society for Testing Materials (ASTM):
 - a) C-920-79....Elastomeric Joint Sealants Type S, Class 12, Grade NS
 - b) C-518....Insulation Board, Semi-Rigid Polyurethane.
 - c) E-84....Standards method of test for surface burning characteristics of building materials.
3. American National Standards Institute (ANSI): ANSI A58.1....Gravity and Lateral Loads Design.
4. Uniform Federal Accessibility Standards: FED-STD-795, 4/1/88....4.13 Door Accessibility.
5. The Aluminum Association (AA): Designation System for Aluminum Finishes (March 1973).
6. International Conference of Building Officials, Uniform Building Code.
7. Public Law 101-336: Americans with Disabilities Act of 1990 (ADA).
8. Public Law 102-585: Veterans Health Care Act of 1992, Sec. 526, Attachment A: "Design Requirements for Detached Smoking Areas."

Part II -- PRODUCT

A. Framing

1. The shelter framework (columns, sills, and headers) shall be fabricated using 6063-T5 extruded aluminum members (Fed.

Spec. QQ-A-200/9C(1)).

2. Extrusion shapes shall be engineered to provide a framework of adequate structural integrity to satisfy the uniform building code (UBC), and to meet the requirements for snow, wind, and seismic loading for the location(s) being considered.
3. Framing members shall be 2.5" x 2.5" x 1/8" thick square extruded aluminum tubes. Mullions shall be 1.5" x 2.5" x 1/8" thick extruded aluminum tubes.
4. The framework shall be assembled with stainless steel, aluminum, or cadmium- or zinc-coated fasteners to prevent rusting or electrolytic interaction with framing members.
5. Shelter framing components, and the method of fastening them to the supporting foundations shall be capable of withstanding lateral loads per ANSI A58.1, the UBC, or applicable local building codes, whichever is more stringent.
6. Method of mounting shelter to concrete pad shall allow for up to 4" of slope adjustment.

B. Roof, Window, Wall Panels

1. Roof configuration shall be a 1/4" thermoformed acrylic bubble dome type, white or bronze (choose), barrel vault shape with 6mm bronze polycarbonate structured sheet, or aluminum standing seam gable or hip shape, all with integral fascia/gutter member, min. 1/8" thick and 2.5" or 6" fascia (choose), all supporting loads listed herein. Aluminum flat pan with 6" fascia/gutter also available.
2. Window panels shall be 1/4" (clear/bronze) tempered glass, acrylic, polycarbonate or mar-resistant polycarbonate, or 6mm polycarbonate structured sheet (choose), and secured to the framing structure with special extrusions to provide a safe weather-protective enclosure.
3. Wall and roof panels shall be sealed as required to provide a water-proof barrier in compliance with Fed. Spec. II-S-001657 using ASTM C-920-79 sealants.

C. Finish

Extruded aluminum framework shall be electrostatically painted, or Class I anodized (choose) in accordance with the Aluminum Association.

D. Guarantee

Materials and workmanship shall be guaranteed for one year, starting on the day of acceptance.

Part III -- ERECTION

A. Delivery

The shelter unit shall be shipped in modular form, with detailed written and/or video instructions for installation.

B. Erection

The manufacturer shall provide erection instructions complete with diagrams. Erection shall be performed by the manufacturer or his representative (option). The manufacturer shall guarantee the installation for a period of one (1) year from the date of acceptance.

C. Protection and Cleaning

Protect panels and other components from damage during shipping and erection, and until project is accepted by the customer.

Par-Kut International, Inc.

40961 Production Drive

Harrison Township, MI 48045

Tel: 586-468-2947

Fax: 586-463-6059