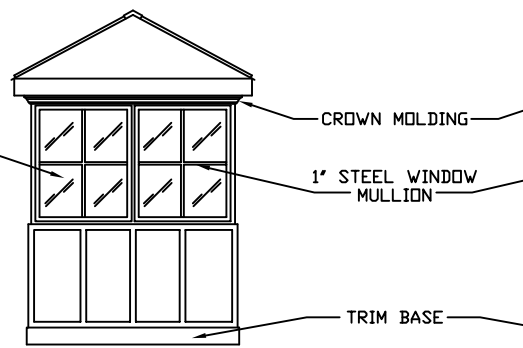
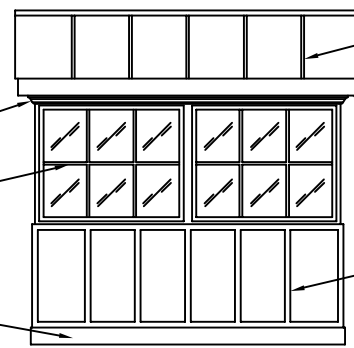


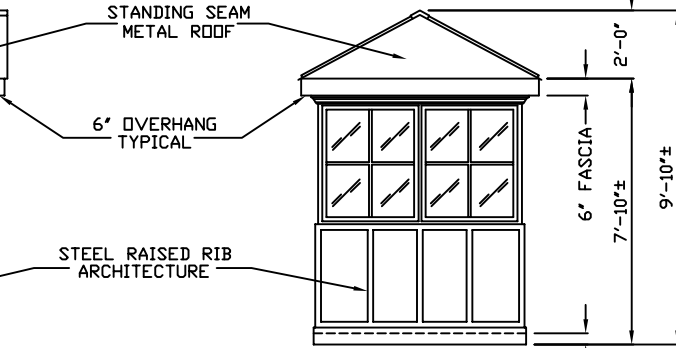
E1 ELEVATION



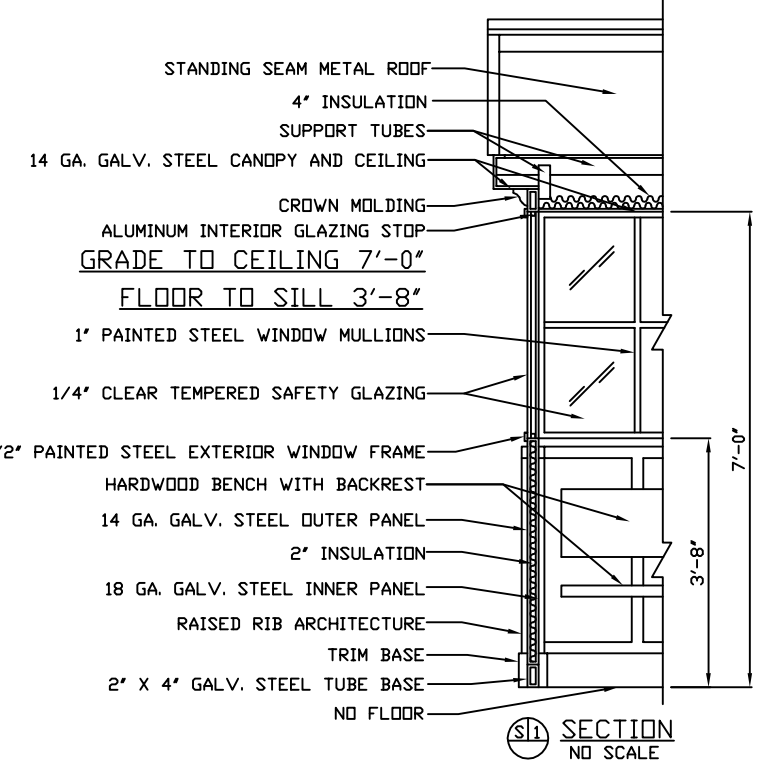
E2 ELEVATION



E3 ELEVATION

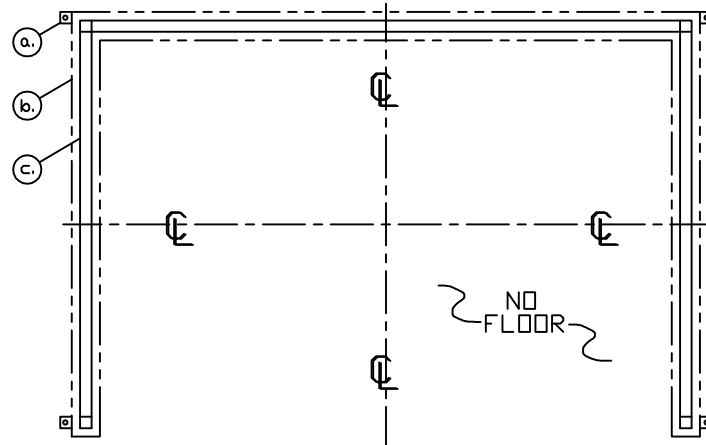


E4 ELEVATION

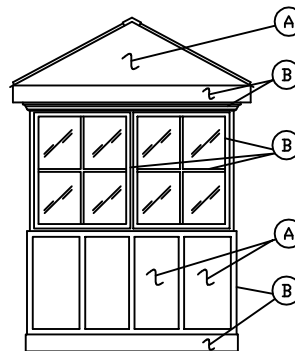


S1 SECTION  
NO SCALE

- a. 2" X 2" X 1/4" MIN. ANCHOR CLIP WITH 3/4" ANCHOR BOLT HOLE, 4-REQ'D. ONE EACH CORNER. ANCHOR BOOTH AFTER FINAL LOCATION. ANCHOR BOLTS NOT INCLUDED
- b. OUTER EDGE OF TRIM BASE.
- c. OUTER EDGE OF BOOTH.



ANCHOR BOLT LAYOUT



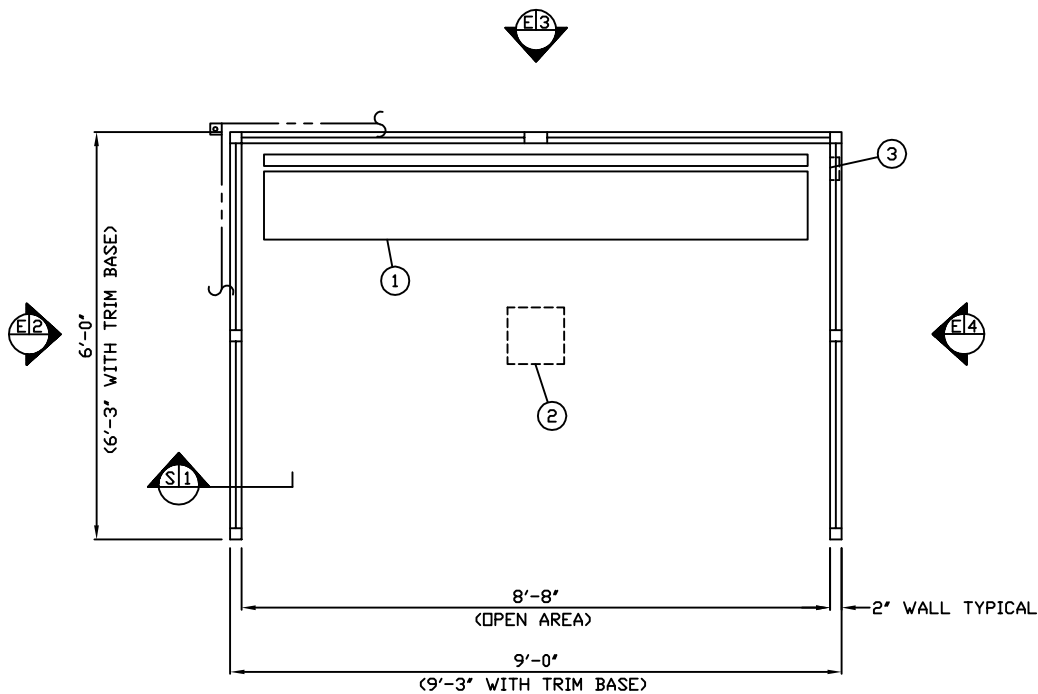
**PAINT SCHEME**

- A. PAINT COLOR: MATCH CREAM SAMPLE  
GABLE ROOF ENDS, CEILING, INTERIOR AND EXTERIOR PANELS
- B. PAINT COLOR: MATCH GREEN SAMPLE  
ROOF PANELS, CROWN MOULDING, BASE, TRIM, WINDOW MULLIONS AND INTERIOR, AND EXTERIOR PANEL MULLIONS

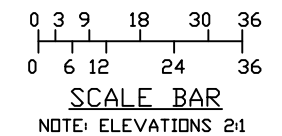
1. 8 FOOT HARDWOOD BENCH AND BACKREST WITH POLYURETHANE FINISH.
2. LIGHT- 50 WATT H.P.S. LIGHT FIXTURE WITH LENS.
3. JUNCTION BOX MOUNTED NEAR FLOOR FOR LIGHT WIRE TERMINATION. CONNECTION TO SITE POWER BY OTHERS.

NOTE: PAR-KUT BOOTHS ARE OF SINGLE UNIT WELDED GALVANIZED STEEL CONSTRUCTION, FACTORY ASSEMBLED AND DELIVERED SET UP. FAILURE TO SECURELY ANCHOR BOOTH MAY RESULT IN OVERTURNING OF UNIT AND SERIOUS INJURY TO OCCUPANT.

- A. GLAZING TO BE 1/4" CLEAR TEMPERED SAFETY GLAZING WITH 1-1/2" STEEL EXTERIOR WINDOW FRAME AND 3/4" ALUMINUM INTERIOR GLAZING STOPS PLUS 1" STEEL WINDOW MULLIONS.
- B. PAINT- A RUST INHIBITIVE PRIMER WITH AN INDUSTRIAL FINISH.
- C. ELECTRICAL- ALL WIRING BY PAR-KUT TO BE #12(MIN) STRANDED COPPER, THHN ENCLOSED IN 1/2"(MIN) E.M.T. PER NATIONAL ELECTRIC CODE. FITTINGS, FIXTURES & DEVICES ARE U.L. LABELED. ALL WIRING TO TERMINATE AT JUNCTION BOX. ALL CIRCUITS HAVE GREEN GROUND WIRE.
- D. BOOTH WILL HAVE A 6" CANOPY OVERHANG ON ALL SIDES.
- E. LIFTING RING(S) ARE PROVIDED IN ROOF.
- F. NO ON SITE WORK BY PAR-KUT.



PLAN VIEW E1



NOTE: THIS PRINT AND DESIGN ARE THE PROPERTY OF PAR-KUT INTERNATIONAL, INC. IT MUST NOT BE REPRODUCED IN ANY MANNER, NOR SHALL IT BE SUBMITTED TO OUTSIDE PARTIES FOR EXAMINATION WITHOUT OUR CONSENT. IT SHALL BE USED ONLY AS A MEANS OF REFERENCE TO WORK DESIGNED AND FURNISHED BY PAR-KUT. PAR-KUT RESERVES THE RIGHT TO MAKE CHANGES TO DESIGN FOR ENGINEERING PURPOSES WITHOUT NOTICE. REVISIONS MAY NOT BE NOTED.

PAR-KUT INTERNATIONAL, INC.  
40961 Production Drive  
Harrison Twp, Mich.  
48045-1351  
PH. (810) 468-2947

DWG# 2K288 SHEET A-1

AMTRAK  
J.H. LYNCH & SONS  
KINGSTON, RI

PD# 5521-01  
SCALE NTS DRAWN BY AJP REVISED 11-12-2014  
DATE 4-28-2000 SIZE 6' X 9' QTY 1  
CHK'D BY: SALES REPRESENTATIVE JIM SHAUNE

A/E NOTES		
(A)	PAINT COLOR: MATCH CREAM SAMPLE	
(B)	PAINT COLOR: MATCH GREEN SAMPLE	