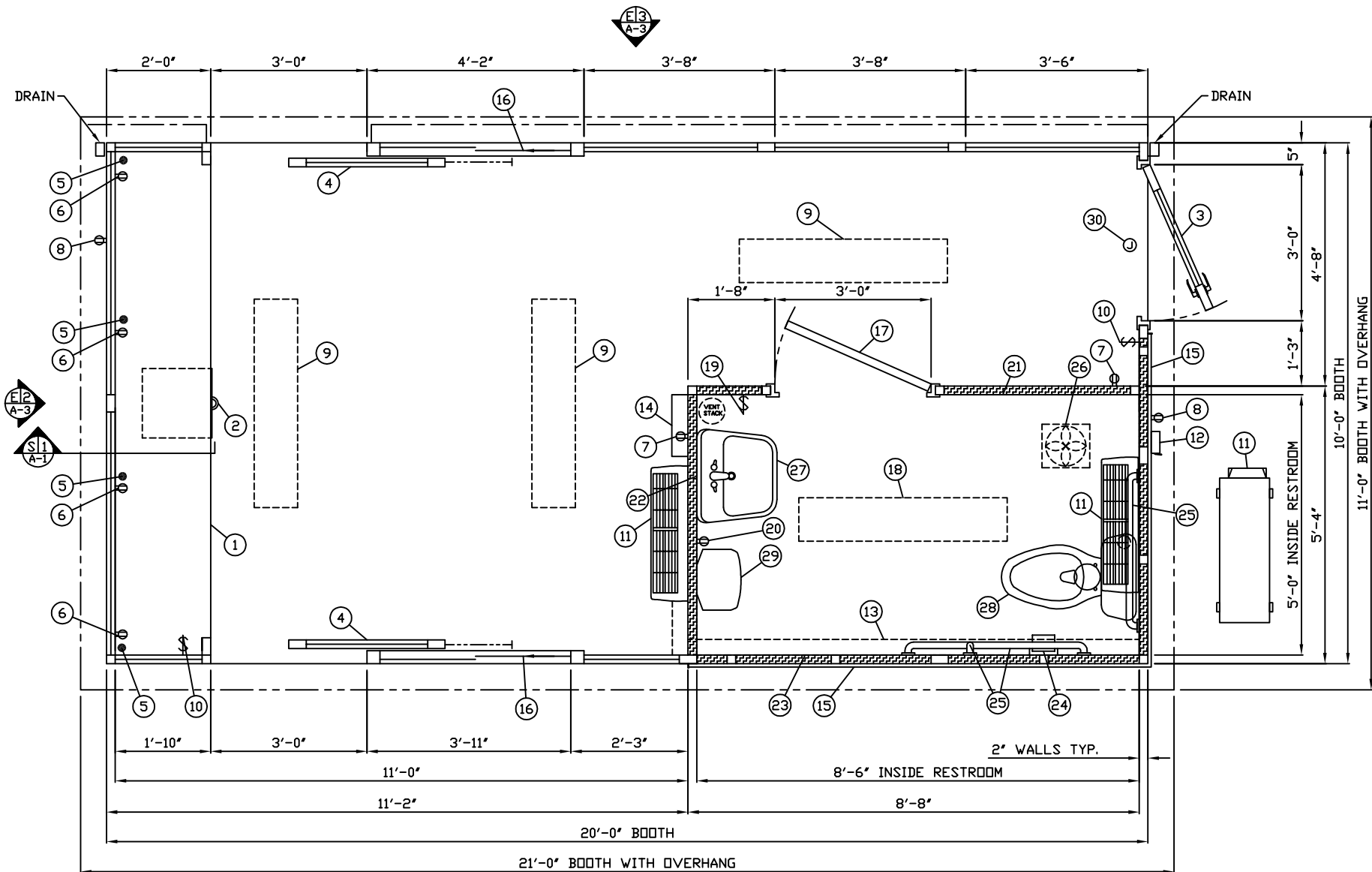
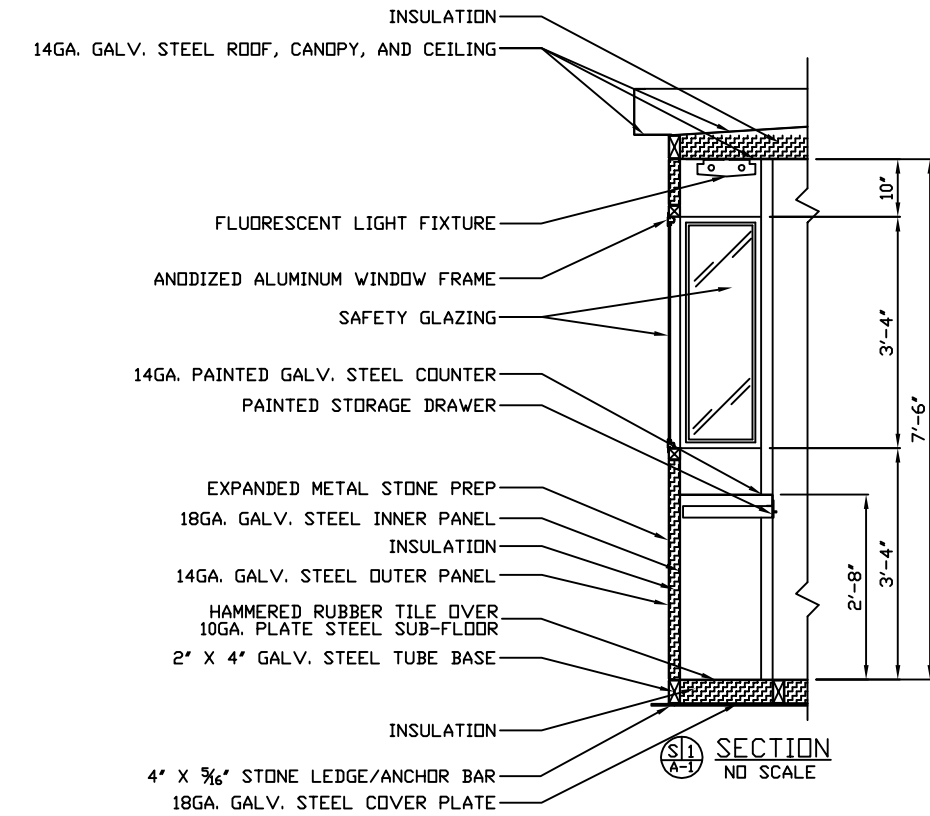


1. COUNTER - PLASTIC LAMINATE.
2. PAINTED STORAGE DRAWER.
3. DOOR - SWINGING STEEL WITH WEATHER-STRIPPING, BALL BEARING BUTTS, HYDRAULIC CLOSER, SAFETY GLAZING, LEVER HANDLE LOCKSET, AND HARDWARE.
4. DOOR - SLIDING STEEL WITH WEATHER-STRIPPING, BALL BEARING HANGERS, HEAVY DUTY TRACK, SAFETY GLAZING, HOOK BOLT LOCK, AND HARDWARE. 2-REQ'D.
5. 2" DIAMETER HOLE IN COUNTER FOR DROP CORDS.
6. DUPLEX OUTLET MOUNTED BELOW COUNTER. 4-REQ'D.
7. DUPLEX OUTLET MOUNTED 18" ABOVE FLOOR. 2-REQ'D.
8. WEATHER RESISTANT GFCI RECEPTACLE WITH WEATHERPROOF IN-USE FLIP COVER, 2-REQ'D.
9. FLUORESCENT LIGHTS, 3-REQ'D., AND WALL SWITCH WIRING BY PAR-KUT. LIGHT FIXTURES SUPPLIED AND INSTALLED ON SITE BY OTHERS.
10. 3-WAY WALL SWITCH FOR INTERIOR LIGHTS, 2-REQ'D.
11. HVAC UNIT PREPPED BY PAR-KUT. SUPPLIED AND INSTALLED ON SITE BY OTHERS.
12. A/C DISCONNECT FOR HVAC UNIT WIRED TO A 2 POLE, 25 AMP BRANCH CIRCUIT BREAKER.
13. WIREMOLD 6000 RACEWAY INSTALLED BY PAR-KUT FOR FUTURE HVAC LINE SET INSTALLATION.
14. CIRCUIT BREAKER PANEL - SQUARE-D #QQ112M100, 120/240V, 12 SPACE, 10-3 WIRE WITH GROUND BAR AND 100 AMP MAIN BREAKER INCLUDED.
15. 3/4" ADVATECH (NO 14GA. STEEL PANELS) ATTACHED TO 14GA. 2" X 2" VERTICAL TUBES 24" O.C. FOR FUTURE LAP SIDING BY OTHERS.
16. HORIZONTAL SLIDING TRANSACTION WINDOW WITH INSECT SCREENS. 2-REQ'D.
17. PRIVACY DOOR WITH LOCK.
18. FLUORESCENT LIGHT AND WALL SWITCH WIRING BY PAR-KUT. LIGHT FIXTURE SUPPLIED AND INSTALLED ON SITE BY OTHERS.
19. WALL SWITCH FOR RESTROOM LIGHT.
20. GROUND FAULT INTERRUPT DUPLEX RECEPTACLE IN REST ROOM.
21. COAT HOOK MOUNTED ON WALL.

22. MIRROR.
23. LOCATION OF PAPER TOWEL DISPENSER.
24. TOILET PAPER HOLDER.
25. STAINLESS STEEL GRAB BAR.
26. EXHAUST FAN- 80CFM.
27. LAVATORY. SUPPLIED AND INSTALLED ON SITE BY OTHERS.
28. WATER CLOSET. SUPPLIED AND INSTALLED ON SITE BY OTHERS.
29. WATER HEATER. SUPPLIED AND INSTALLED ON SITE BY OTHERS.
30. 4" X 4" JUNCTION BOX MOUNTED ABOVE DOOR WITH A 1/2" RACEWAY TO C.B. PANEL. FOR FUTURE EXTERIOR MOUNTED EGRESS LIGHT PROVIDED & INSTALLED BY OTHERS.

NOTE: PAR-KUT BOOTHS ARE OF SINGLE UNIT WELDED STEEL CONSTRUCTION, FACTORY ASSEMBLED AND DELIVERED SET UP. FAILURE TO SECURELY ANCHOR BOOTH MAY RESULT IN OVERTURNING OF UNIT AND SERIOUS INJURY TO OCCUPANT.

- A. GLAZING - INSULATED TINTED TEMPERED SAFETY GLAZING SET IN ANODIZED ALUMINUM WINDOW FRAMES. INSECT SCREENS PROVIDED ON TRANSACTION WINDOWS.
- B. PAINT - FINISH SHALL BE SINGLE COLOR OF CHOICE, IMRON POLYURETHANE HIGH GLOSS INDUSTRIAL COATING. SHALL BE APPLIED TO ALL EXPOSED METAL SURFACES. THIS EXCLUDES FLOOR, ROOF SURFACE, ANODIZED ALUMINUM WINDOW FRAMES AND ANY STAINLESS STEEL COMPONENTS (IF USED).
- C. ELECTRICAL - ALL WIRING BY PAR-KUT TO BE #12(MIN) STRANDED COPPER, THHN ENCLOSED IN 1/2"(MIN) E.M.T. PER NATIONAL ELECTRIC CODE. ALL ELECTRICAL EQUIPMENT WILL BE LISTED BY U.L. OR EQUIVALENT RECOGNIZED NATIONAL TESTING LABORATORY. ALL WIRING TO TERMINATE AT C.B. PANEL. ALL CIRCUITS HAVE GREEN GROUND WIRE.
- D. BOOTH WILL HAVE A 6" CANOPY OVERHANG ON ALL SIDES.
- E. LIFTING RING(S) ARE PROVIDED ON ROOF.
- F. NO ON SITE WORK BY PAR-KUT.
- G. NO MASONRY SUPPLIES, STONE OR MASONRY WORK BY PAR-KUT.



E11 A-3 PLAN VIEW



NOTE: THIS PRINT AND DESIGN ARE THE PROPERTY OF PAR-KUT INTERNATIONAL, INC. IT MUST NOT BE REPRODUCED IN ANY MANNER, NOR SHALL IT BE SUBMITTED TO OUTSIDE PARTIES FOR EXAMINATION WITHOUT OUR CONSENT. IT SHALL BE USED ONLY AS A MEANS OF REFERENCE TO WORK DESIGNED AND FURNISHED BY PAR-KUT. PAR-KUT RESERVES THE RIGHT TO MAKE CHANGES TO DESIGN FOR ENGINEERING PURPOSES WITHOUT NOTICE. REVISIONS MAY NOT BE NOTED.

PAR-KUT INTERNATIONAL, INC.
 40961 Production Drive
 Harrison Twp, Mich.
 48045-1551
 PH. (586) 468-2947



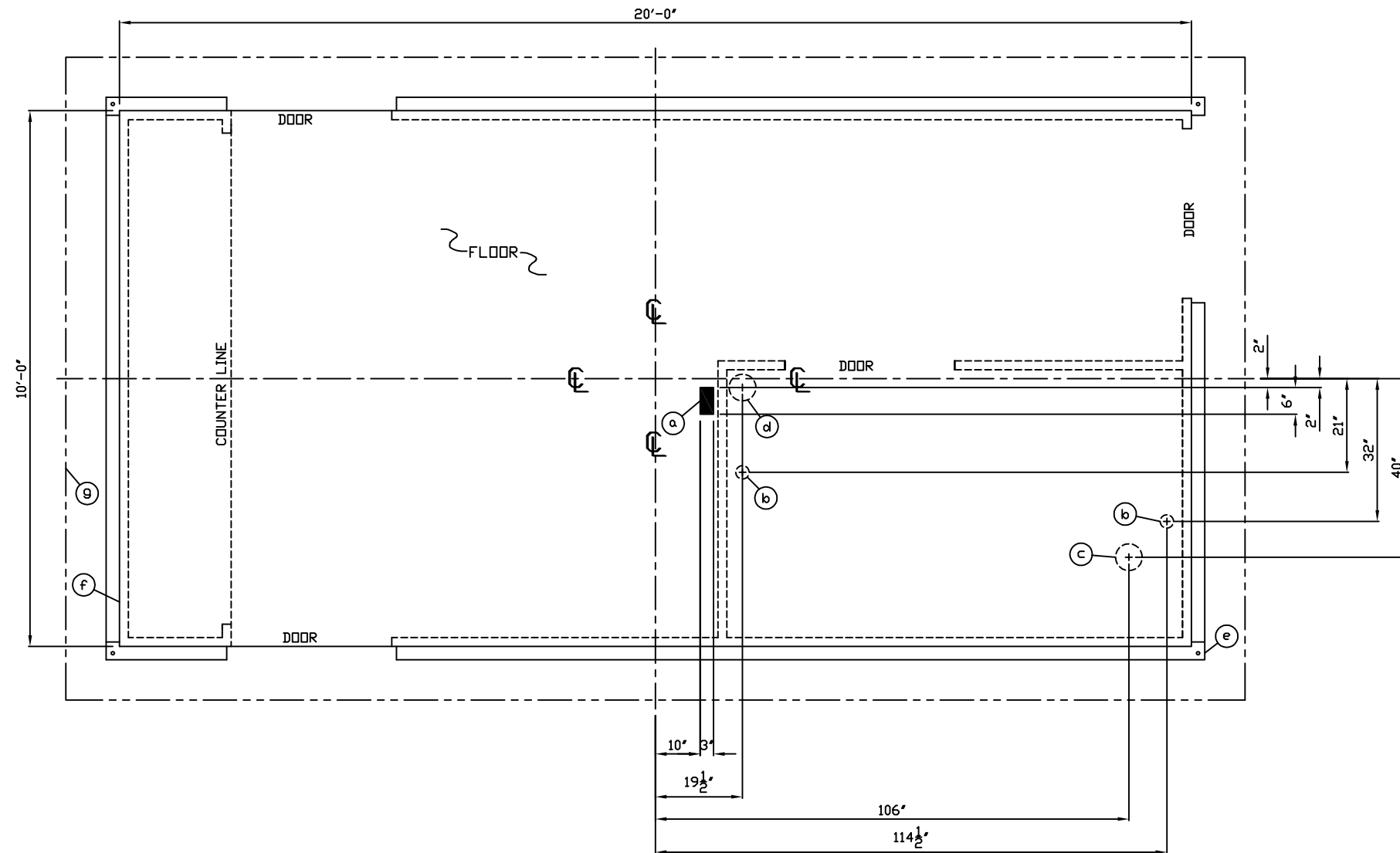
GENERAL NOTES	
INTERIOR PAINT COLOR:	COASTAL BEIGE
EXTERIOR PAINT COLOR:	DARK BRONZE
GLAZING TINT COLOR:	GRAY
PLASTIC LAMINATE COLOR:	PLATINUM
HAMMERED RUBBER TILE COLOR:	GRAY
4" INSULATED BASE PREP FOR FIELD STONE PREP FOR LAP SIDING PREP FOR SITE INSTALLED LIGHTS, HVAC, AND RESTROOM ITEMS ESTIMATED WEIGHT: 10,000 LBS.	

DWG# 13-104	SHEET A-1
LIFEWAY RIDGECREST CONFERENCE CENTER RIDGECREST, NC	
PO# 605931	SCALE NTS
DATE 4-22-2013	CHK'D BY:
DRAWN BY E.JL	SALES REPRESENTATIVE JIM SMITH
REVISED 5-20-2013	QTY 1
SIZE 10' X 20'	

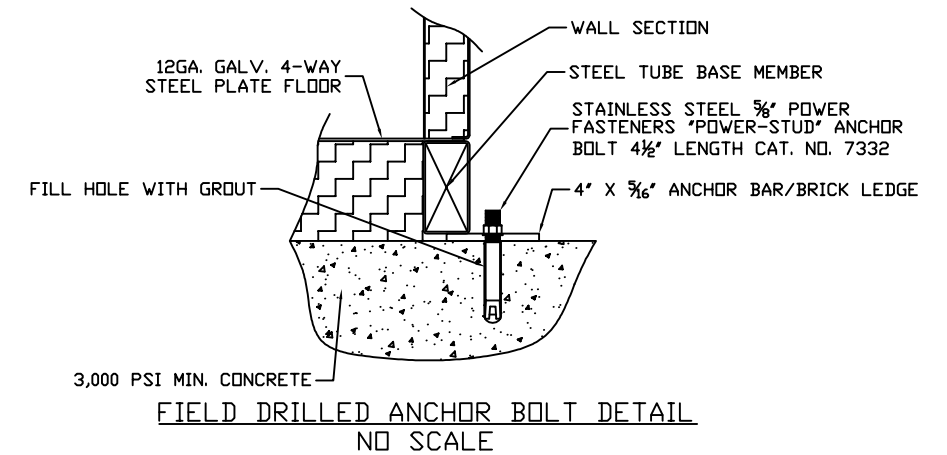
- a. SLOT IN FLOOR FOR ELECTRICAL SERVICE ENTRANCE TO C.B. PANEL.
- b. 3"Ø HOLE THROUGH FLOOR FOR WATER INLET, 2"-REQ'D.
- c. 6"Ø HOLE THROUGH FLOOR FOR WATER CLOSET.
- d. VENT STACK: 6"Ø HOLE THROUGH FLOOR
5"Ø HOLE THROUGH ROOF
- e. 4" X 5/16" (MIN) STEEL ANCHOR BAR/LEDGE WITH A 3/4" ANCHOR BOLT HOLE, 4-REQ'D, ONE EACH CORNER. ANCHOR BOOTH AFTER FINAL LOCATION. ANCHOR BOLTS NOT INCLUDED.
- f. OUTER EDGE OF BOOTH.
- g. SUGGESTED MINIMUM FOUNDATION/SLAB.

GENERAL SITE INSTALLED ITEMS PROVIDED BY OTHERS

- 1. PROVIDE 120/240V, 1Ø-3 WIRE SERVICE WITH GROUND.
- 2. CONCRETE FOUNDATION/SLAB MINIMUM 6" DEEP 3,000 PSI MINIMUM (28 DAY ACI 318). THE FOUNDATION/SLAB SHOULD BE MINIMUM OF 24" WIDER THAN THE ROOF LINE DIMENSIONS TO ALLOW A 12" CONCRETE BORDER ON EACH SIDE OF THE BUILDING ROOF LINE.
- 3. ADEQUATE SIZE DRILLED ANCHOR BOLTS. SUGGESTED SIZE 5/8" X 4 1/2" POWER FASTENERS "POWER STUD" CATALOG #7332.



SERVICE ENTRANCE/ANCHOR BOLT LAYOUT



THIS DRAWING IS FOR REFERENCE PURPOSES ONLY. PAR-KUT BUILDINGS MUST BE SECURELY ANCHORED IN PLACE AND MUST BE PROPERLY GROUNDED. ADEQUATE SIZED ANCHOR BOLTS SHALL BE USED. THE SIZE AND DEPTH OF THE ANCHORS SHOULD BE OF SUFFICIENT DESIGN TO WITHSTAND THE HIGHEST RECORDED WIND SPEEDS/SEISMIC DESIGN CATEGORY IN THE AREA OF INSTALLATION. CONSULT A PROFESSIONAL ENGINEER FAMILIAR WITH THE WEATHER CONDITIONS IN THE AREA.

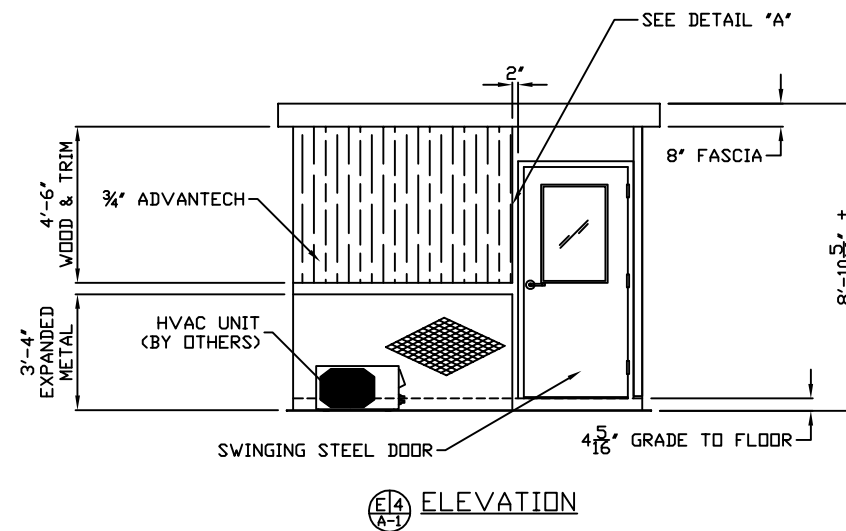
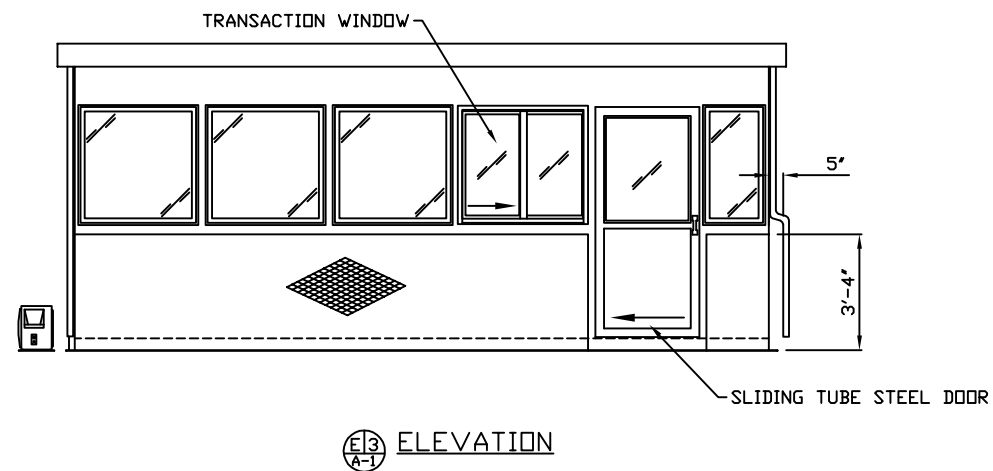
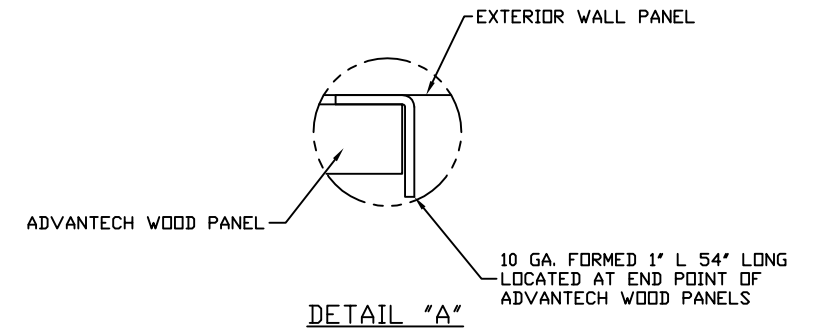
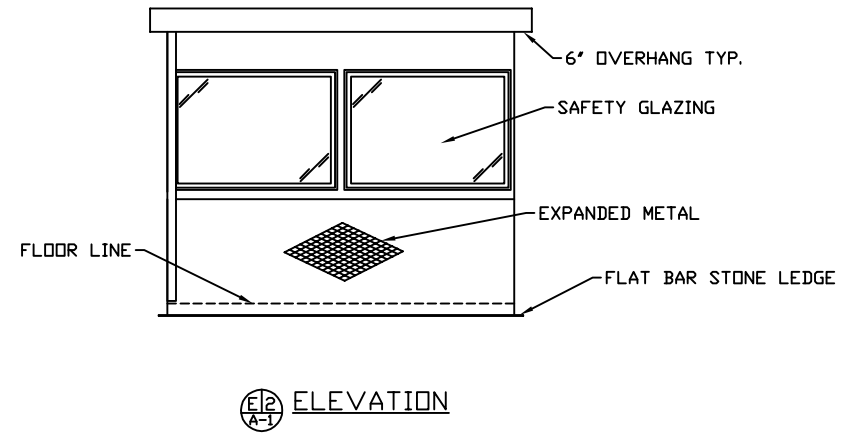
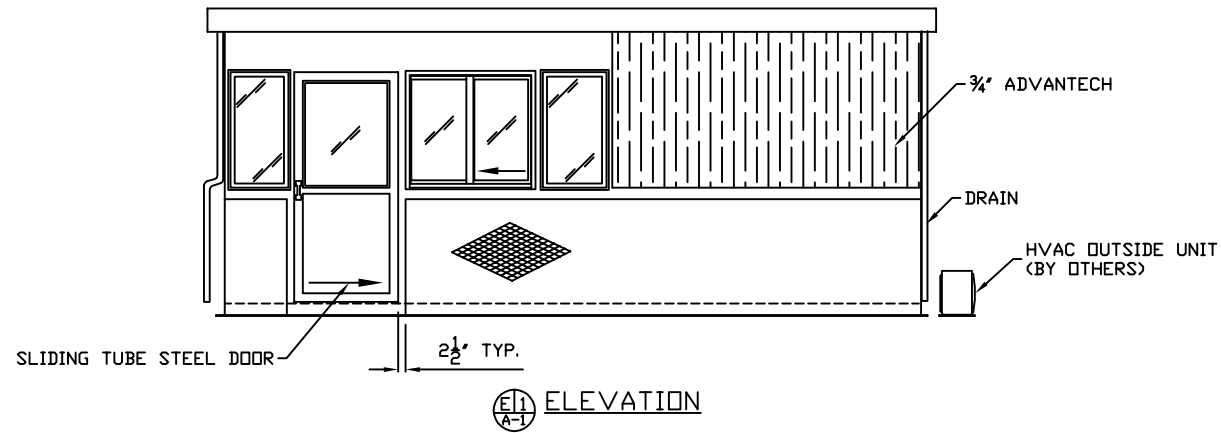
A.D.A. NOTE
BOOTH MUST BE HANDICAP ACCESSIBLE. THE FOUNDATION MAY BE RECESSED OR A 1:12 RAMP MUST BE PROVIDED SO THAT MAXIMUM CHANGE IN LEVEL FROM GRADE TO FINISH FLOOR DOES NOT EXCEED 1/4".

NOTE: THIS PRINT AND DESIGN ARE THE PROPERTY OF PAR-KUT INTERNATIONAL, INC. IT MUST NOT BE REPRODUCED IN ANY MANNER, NOR SHALL IT BE SUBMITTED TO OUTSIDE PARTIES FOR EXAMINATION WITHOUT OUR CONSENT. IT SHALL BE USED ONLY AS A MEANS OF REFERENCE TO WORK DESIGNED AND FURNISHED BY PAR-KUT. PAR-KUT RESERVES THE RIGHT TO MAKE CHANGES TO DESIGN FOR ENGINEERING PURPOSES WITHOUT NOTICE. REVISIONS MAY NOT BE NOTED.

PAR-KUT INTERNATIONAL, INC.
40961 Production Drive
Harrison Twp, Mich.
48045-1551
PH. (586) 468-2947



DWG#13-104	SHEET A-2	
LIFEWAY RIDGECREST CONFERENCE CENTER RIDGECREST, NC		
PO# 605931	SCALE	REVISED
DATE	DRAWN BY	QTY
4-22-2013	EJL	1
CHK'D BY:	SALES REPRESENTATIVE	
	JIM SMITH	

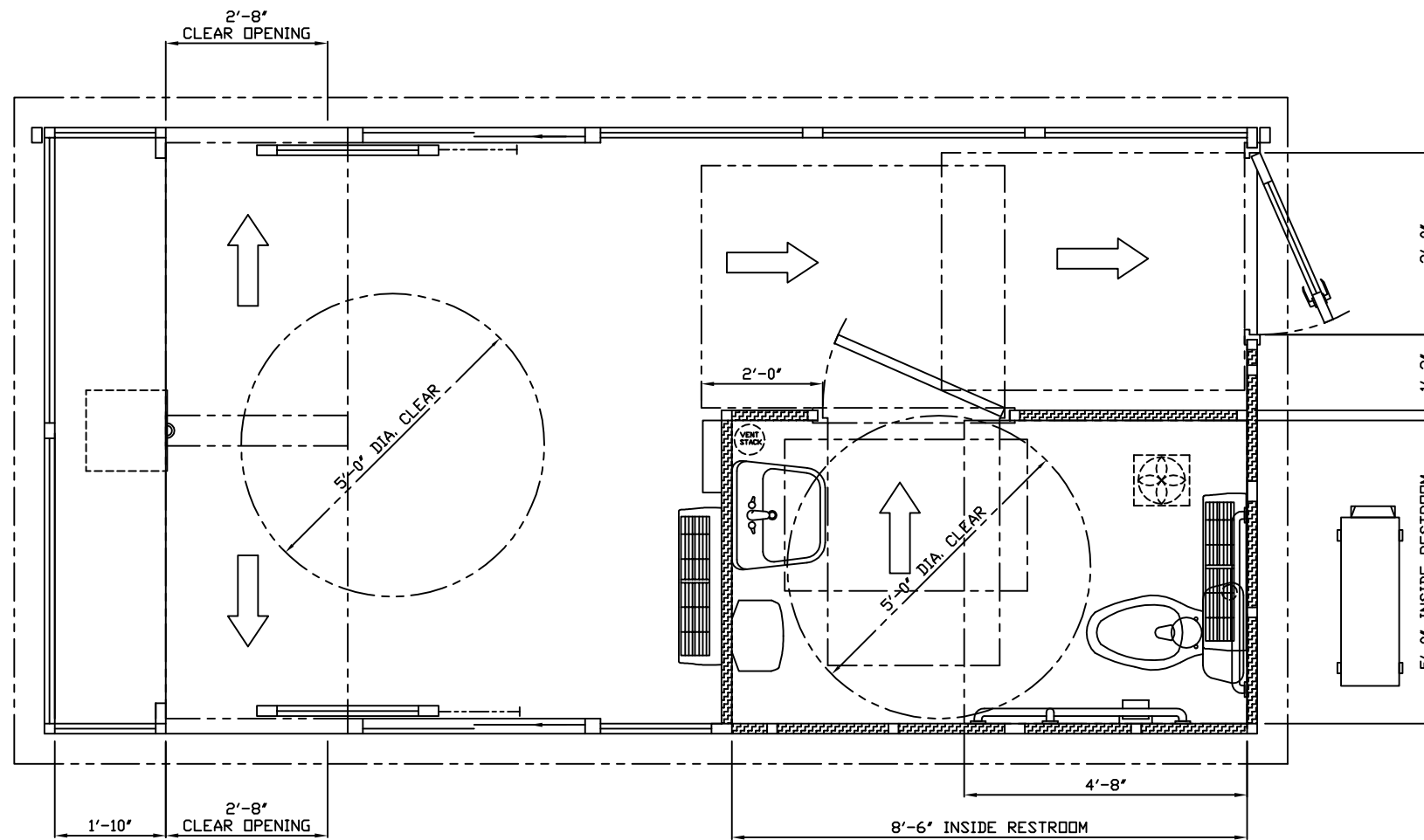


NOTE: THIS PRINT AND DESIGN ARE THE PROPERTY OF PAR-KUT INTERNATIONAL, INC. IT MUST NOT BE REPRODUCED IN ANY MANNER, NOR SHALL IT BE SUBMITTED TO OUTSIDE PARTIES FOR EXAMINATION WITHOUT OUR CONSENT. IT SHALL BE USED ONLY AS A MEANS OF REFERENCE TO WORK DESIGNED AND FURNISHED BY PAR-KUT. PAR-KUT RESERVES THE RIGHT TO MAKE CHANGES TO DESIGN FOR ENGINEERING PURPOSES WITHOUT NOTICE. REVISIONS MAY NOT BE NOTED.

PAR-KUT INTERNATIONAL, INC.
40961 Production Drive
Harrison Twp, Mich.
48045-1551
PH. (586) 468-2947



DWG# 13-104	SHEET A-3	
LIFEWAY RIDGECREST CONFERENCE CENTER RIDGECREST, NC		
PO# 605931	SCALE NTS	DATE 4-22-2013
DRAWN BY E.J.L.	SIZE 10' X 20'	REVISED 5-20-2013
CHK'D BY:	SALES REPRESENTATIVE JIM SMITH	QTY 1



ADA CLEARANCES LAYOUT

NOTE: THIS PRINT AND DESIGN ARE THE PROPERTY OF PAR-KUT INTERNATIONAL, INC. IT MUST NOT BE REPRODUCED IN ANY MANNER, NOR SHALL IT BE SUBMITTED TO OUTSIDE PARTIES FOR EXAMINATION WITHOUT OUR CONSENT. IT SHALL BE USED ONLY AS A MEANS OF REFERENCE TO WORK DESIGNED AND FURNISHED BY PAR-KUT. PAR-KUT RESERVES THE RIGHT TO MAKE CHANGES TO DESIGN FOR ENGINEERING PURPOSES WITHOUT NOTICE. REVISIONS MAY NOT BE NOTED.

PAR-KUT INTERNATIONAL, INC.
 40961 Production Drive
 Harrison Twp, Mich.
 48045-1351
 PH. (586) 468-2947



DWG# 13-104		SHEET A-4	
LIFEWAY RIDGECREST CONFERENCE CENTER RIDGECREST, NC			
PD# 605931			
SCALE NTS	DRAWN BY EJL	REVISED 5-20-2013	
DATE 4-22-2013	SIZE 10' X 20'	QTY 1	
CHK'D BY:	SALES REPRESENTATIVE JIM SMITH		