

PLAN VIEW

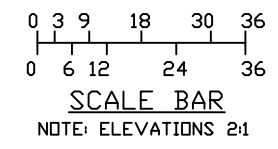
1. COUNTER- 18" DEEP PAINTED GALVANIZED STEEL CONSTRUCTION MOUNTED ON A 30° ANGLE WITH LOWEST POINT AT 34" ABOVE FLOOR AND HIGHEST POINT AT 44-3/8" ABOVE FLOOR.
- 2a. COUNTER- 16" DEEP X 114" LONG PAINTED GALVANIZED STEEL MOUNTED 40" ABOVE FLOOR, WITH PLASTIC LAMINATE BASE CABINETS WITH TWO ADJUSTABLE SHELVES IN EACH CABINET.
- 2b. COUNTER- 16" DEEP X 141" LONG PAINTED GALVANIZED STEEL MOUNTED 40" ABOVE FLOOR, WITH PLASTIC LAMINATE BASE CABINETS WITH TWO ADJUSTABLE SHELVES IN EACH CABINET. 18" WIDE STEEL CABINET LOCATED IN CENTER OF COUNTER FOR CABINET MOUNTED HEATER.
3. DOOR- 36" WIDE SLIDING STEEL WITH WEATHER-STRIPPING, BALL BEARING HANGERS, SAFETY GLAZING, HOOK BOLT LOCK, AND HARDWARE, 2-REQ'D.
4. HOLE IN COUNTER FOR DROP CORDS, 2-REQ'D.
5. DUPLEX OUTLET MOUNTED ABOVE COUNTER, 4-REQ'D.
6. 2-32 WATT FLUORESCENT LIGHT FIXTURE WITH ACRYLIC LENS, 3-REQ'D.
7. SWITCH FOR WORK AREA LIGHTS.
8. HEATER- 240V/4,800 WATT MOUNTED IN BLANKED OUT CABINET AREA WITH INTEGRAL THERMOSTAT CONTROL.
9. MITSUBISHI SPLIT UNIT AIR CONDITIONER- 230V/24,000 BTU WITH MODEL #PK24FK AIR HANDLER MOUNTED ABOVE REST ROOM DOOR WITH MODEL #PU24EK CONDENSING UNIT. CONDENSING UNIT WILL BE SHIPPED LOOSE. FIELD CONNECTION AND START UP TO BE DONE BY OTHERS.
10. C.B. PANEL- 24 SPACE, 120/240V, 1Ø-3 WIRE WITH GROUND, 100 AMP MAIN BREAKER INCLUDED.
11. 30"W X 74"H SWINGING STEEL PRIVACY DOOR WITH LOCK. A 13" HEADER IS REQUIRED FOR AIR HANDLER MOUNTING.
12. 1-17 WATT FLUORESCENT LIGHT FIXTURE.
13. 50 CFM EXHAUST FAN MOUNTED IN CEILING.
14. SWITCH FOR REST ROOM LIGHT AND EXHAUST FAN.
15. GFI RECEPTACLE.
16. COAT HOOK MOUNTED ON DOOR.
17. TOILET PAPER HOLDER.
18. PAPER TOWEL DISPENSER.
19. MIRROR.
20. FRP BACK SPLASH.
21. DOOR- 24"W X 74"H SWINGING STEEL WITH LOCK.
22. 2-32 WATT FLUORESCENT LIGHT FIXTURE WITH ACRYLIC LENS.
23. SWITCH FOR CLOSET LIGHT.
24. THREE ADJUSTABLE SHELVES- 12" DEEP PAINTED GALVANIZED STEEL MOUNTED 12"(MIN) AND 80"(MAX) ABOVE FLOOR.
25. COAT ROD.
26. 36" X 36" FLOOR HATCH WITH TREAD PLATE FINISH.
27. 10' PLUG STRIP, 2-REQ'D, MOUNTED ABOVE BOTH ITEMS #2.
28. HEATER- 120V/1,500 WATT WALL MOUNTED WITH INTEGRAL THERMOSTAT CONTROL.
29. STONCD #EQX300L QUARTZ FLOODLIGHT MOUNTED TO SOFFIT.
30. SWITCH FOR EXTERIOR LIGHT.

THE FOLLOWING ITEMS ARE SHIPPED LOOSE AND FIELD INSTALLED BY OTHERS:

31. WATER CLOSET WITH OPEN FRONT SEAT.
32. LAVATORY WITH CHROME FAUCET.
33. ARISTON WATER WITH 2-1/2 GALLON POINT OF USE.

NOTE: PAR-KUT BOOTHS ARE OF SINGLE UNIT WELDED GALVANIZED STEEL CONSTRUCTION, FACTORY ASSEMBLED AND DELIVERED SET UP. FAILURE TO SECURELY ANCHOR BOOTH MAY RESULT IN OVERTURNING OF UNIT AND SERIOUS INJURY TO OCCUPANT.

- A. GLAZING- TINTED, INSULATED SAFETY GLAZING SET IN PAINTED STEEL EXTERIOR WINDOW FRAMES AND ANODIZED ALUMINUM INTERIOR GLAZING STOPS.
- B. PAINT- A RUST INHIBITIVE PRIMER WITH AN INDUSTRIAL FINISH.
- C. ELECTRICAL- ALL WIRING BY PAR-KUT TO BE #12(MIN) STRANDED COPPER, THHN ENCLOSED IN 1/2"(MIN) E.M.T. PER NATIONAL ELECTRIC CODE. FITTINGS, FIXTURES, AND DEVICES ARE U.L. LABELED. ALL WIRING TO TERMINATE AT C.B. PANEL. ALL CIRCUITS HAVE GREEN GROUND WIRE.
- D. BOOTH WILL HAVE A 6" CANOPY OVERHANG ON ALL SIDES.
- E. LIFTING RING(S) ARE PROVIDED IN ROOF.
- F. NO ON SITE WORK BY PAR-KUT.



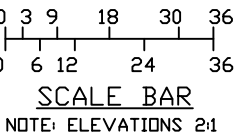
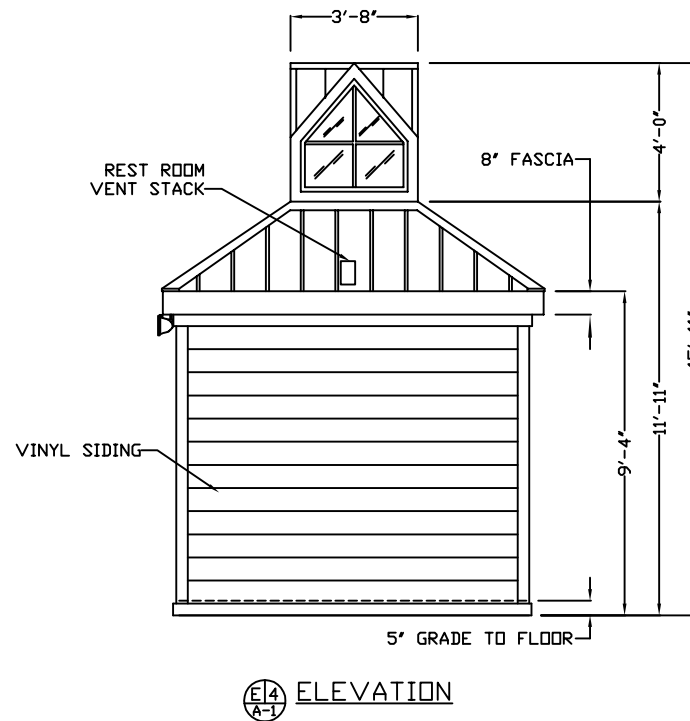
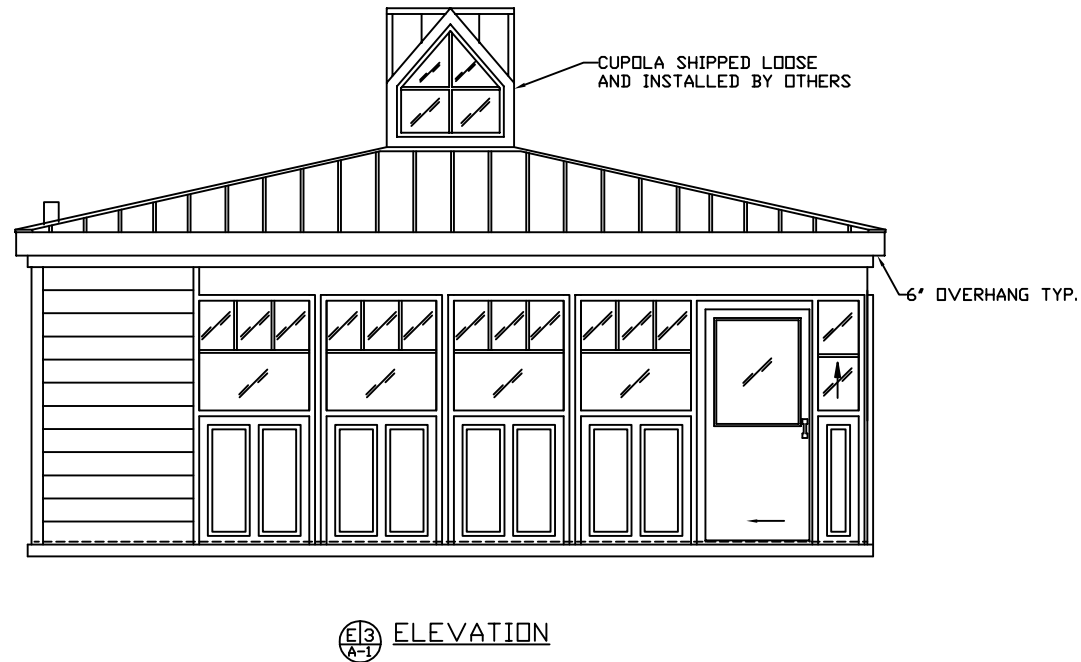
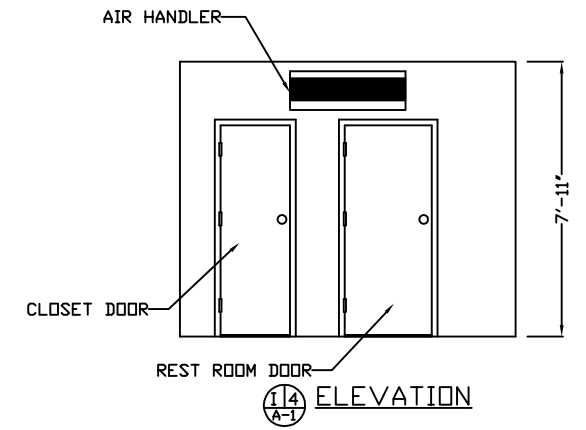
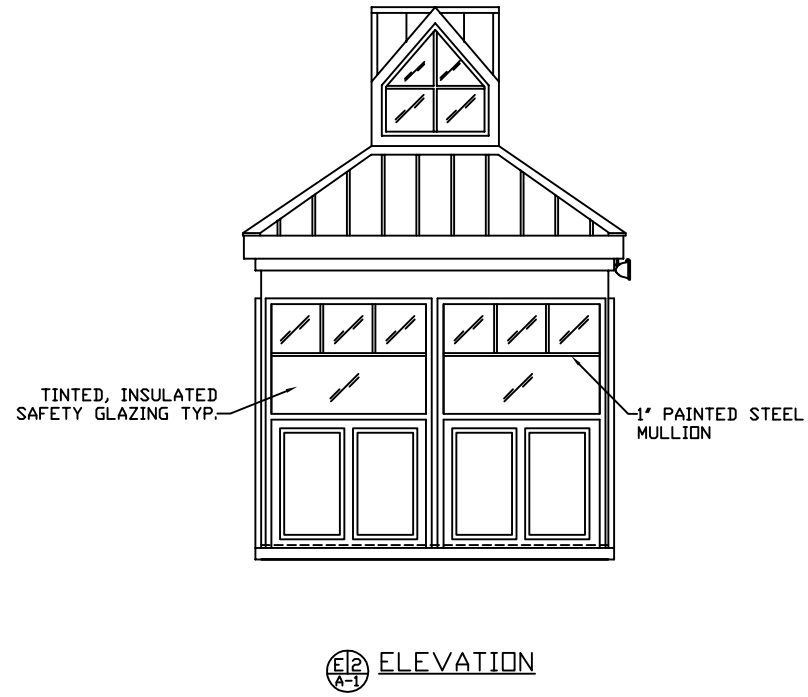
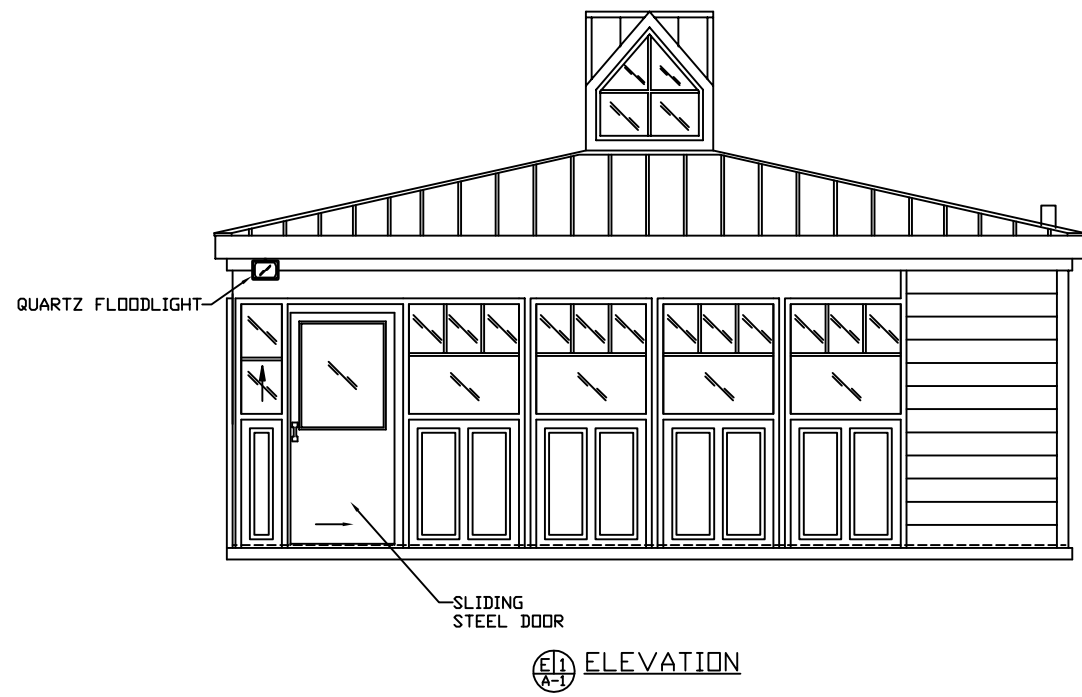
NOTE: THIS PRINT AND DESIGN ARE THE PROPERTY OF PAR-KUT INTERNATIONAL, INC. IT MUST NOT BE REPRODUCED IN ANY MANNER, NOR SHALL IT BE SUBMITTED TO OUTSIDE PARTIES FOR EXAMINATION WITHOUT OUR CONSENT. IT SHALL BE USED ONLY AS A MEANS OF REFERENCE TO WORK DESIGNED AND FURNISHED BY PAR-KUT. PAR-KUT RESERVES THE RIGHT TO MAKE CHANGES TO DESIGN FOR ENGINEERING PURPOSES WITHOUT NOTICE. REVISIONS MAY NOT BE NOTED.

PAR-KUT INTERNATIONAL, INC.
 40961 Production Drive
 Harrison Twp, Mich.
 48045-1551
 PH. (586) 468-2947

DWG# 06-019 SHEET A-1

SEC-018		
PO#	DRAWN BY	REVISED
SCALE	NSG	11-12-2014
DATE	SIZE	QTY
2-7-2006	10' X 24'	1
CHK'D BY:	SALES REPRESENTATIVE	

GENERAL NOTES	
PRE FINISHED ROOF COLOR:	
VINYL SIDING COLOR:	
GLAZING TINT COLOR:	
RUBBER TILE COLOR:	
PAINT COLOR:	
FRP COLOR:	
(PLEASE SPECIFY COLOR)	
ESTIMATED WEIGHT: 15,000 LBS.	



NOTE: THIS PRINT AND DESIGN ARE THE PROPERTY OF PAR-KUT INTERNATIONAL, INC. IT MUST NOT BE REPRODUCED IN ANY MANNER, NOR SHALL IT BE SUBMITTED TO OUTSIDE PARTIES FOR EXAMINATION WITHOUT OUR CONSENT. IT SHALL BE USED ONLY AS A MEANS OF REFERENCE TO WORK DESIGNED AND FURNISHED BY PAR-KUT. PAR-KUT RESERVES THE RIGHT TO MAKE CHANGES TO DESIGN FOR ENGINEERING PURPOSES WITHOUT NOTICE. REVISIONS MAY NOT BE NOTED.

PAR-KUT INTERNATIONAL, INC.
40961 Production Drive
Harrison Twp, Mich.
48045-1551
PH. (586) 468-2947



DWG#	06-019	SHEET	A-3
SEC-018			
PO#			
SCALE	NTS	DRAWN BY	NSG
DATE	2-7-2006	REVIS	11-12-2014
CHK'D BY:		SIZE	10' X 24'
		QTY	1
		SALES REPRESENTATIVE	