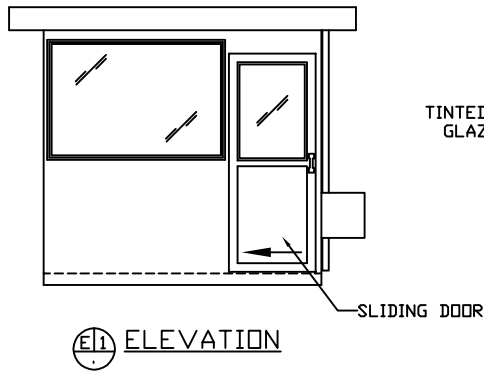
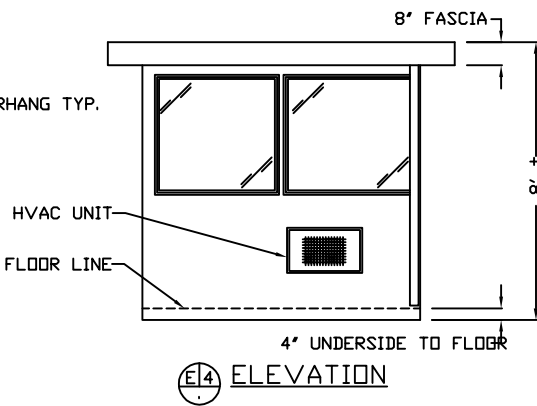
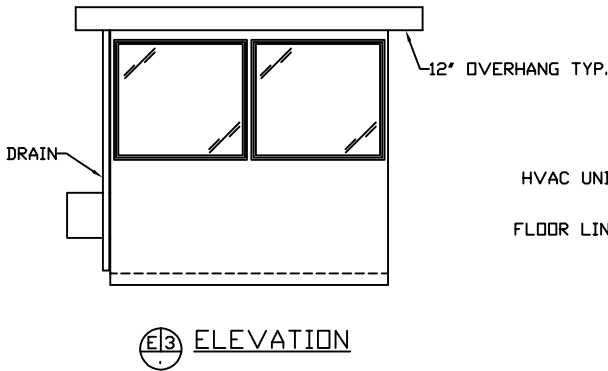


NOTE: PROVIDE 120/240V, 1Ø-3 WIRE SERVICE WITH GROUND.

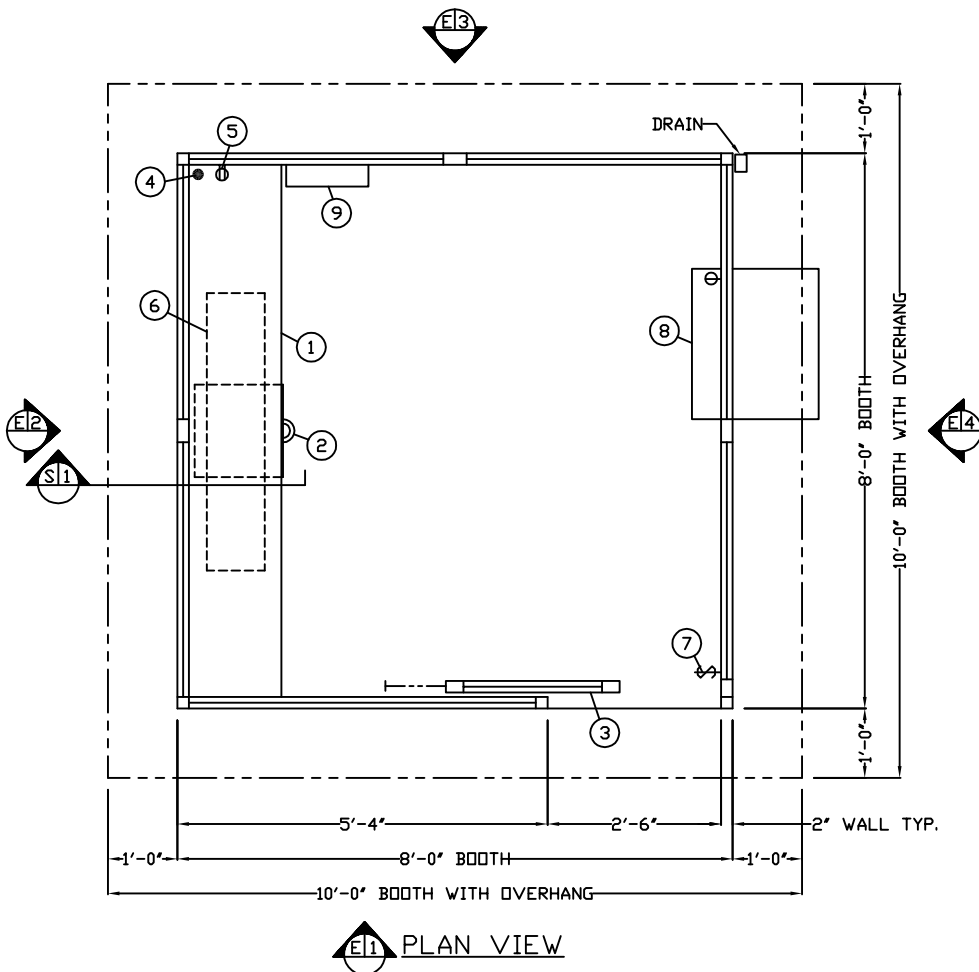


TINTED SAFETY GLAZING TYP.

E2 ELEVATION



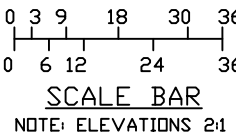
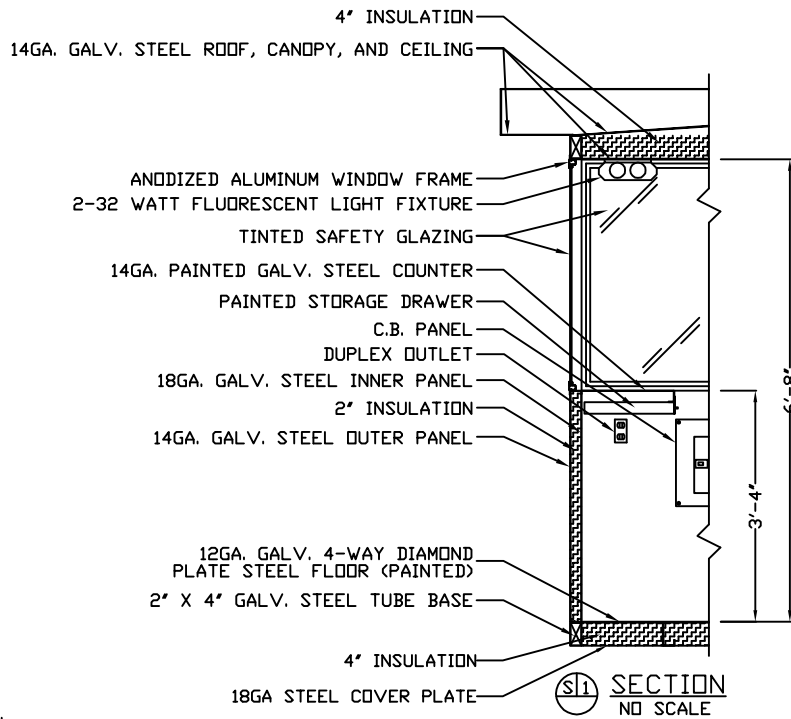
SEE DRAWING A-2 FOR STAND AND BOOTH DRAWING



1. COUNTER- 18" DEEP PAINTED GALVANIZED STEEL MOUNTED AT SILL.
2. PAINTED STORAGE DRAWER BENEATH COUNTER.
3. DOOR- 30" WIDE, SLIDING STEEL WITH WEATHER-STRIPPING, BALL BEARING HANGERS, HEAVY DUTY TRACK, SAFETY GLAZING, LOCK, AND HARDWARE.
4. HOLE IN COUNTER FOR DROP CORDS.
5. DUPLEX OUTLET MOUNTED BELOW COUNTER.
6. FLUORESCENT LIGHT FIXTURE WITH ACRYLIC LENS.
7. SWITCH INTERIOR LIGHTS.
8. HVAC UNIT- 240V/11,600 BTU WALL MOUNTED HEAT/COOL COMBINATION WITH INTEGRAL THERMOSTAT CONTROL.
9. C.B. PANEL- 12 SPACE 120/240V 1Ø-3 WIRE WITH GROUND. 100 AMP MAIN BREAKER INCLUDED.

NOTE: PAR-KUT BOOTHS ARE OF SINGLE UNIT WELDED GALVANIZED STEEL CONSTRUCTION, FACTORY ASSEMBLED AND DELIVERED SET UP. FAILURE TO SECURELY ANCHOR BOOTH MAY RESULT IN OVERTURNING OF UNIT AND SERIOUS INJURY TO OCCUPANT. TOWER AND STAIR ASSEMBLY SHALL BE SHIPPED IN MULTIPLE SECTION WHICH REQUIRE SITE ERECTION BY OTHERS.

- A. GLAZING- TINTED SAFETY GLAZING SET IN ANODIZED ALUMINUM WINDOW FRAMES. VENT WINDOWS WILL BE PROVIDED WITH INSECT SCREENS.
- B. PAINT- A RUST INHIBITIVE PRIMER WITH AN INDUSTRIAL FINISH.
- C. ELECTRICAL- ALL WIRING BY PAR-KUT TO BE #12(MIN) STRANDED COPPER, THHN ENCLOSED IN 1/2"(MIN) E.M.T. PER NATIONAL ELECTRIC CODE. FITTINGS, FIXTURES & DEVICES ARE U.L. LABELED. ALL WIRING TO TERMINATE AT C.B. PANEL. ALL CIRCUITS HAVE GREEN GROUND WIRE.
- D. BOOTH WILL HAVE A 12" CANOPY OVERHANG ON ALL SIDES.
- E. LIFTING RING(S) ARE PROVIDED IN ROOF.
- F. NO ON SITE WORK BY PAR-KUT.



GENERAL NOTES	
BUILDING AND TOWER PAINT COLOR: IMPERIAL BLUE	#DC7850
STAIRS, HAND RAILS AND STAIR RAILS SHALL BE BARE HOT DIPPED GALVANIZED STEEL TO ALLOW FOR FINAL FIELD CONNECTION	

NOTE: THIS PRINT AND DESIGN ARE THE PROPERTY OF PAR-KUT INTERNATIONAL, INC. IT MUST NOT BE REPRODUCED IN ANY MANNER, NOR SHALL IT BE SUBMITTED TO OUTSIDE PARTIES FOR EXAMINATION WITHOUT OUR CONSENT. IT SHALL BE USED ONLY AS A MEANS OF REFERENCE TO WORK DESIGNED AND FURNISHED BY PAR-KUT. PAR-KUT RESERVES THE RIGHT TO MAKE CHANGES TO DESIGN FOR ENGINEERING PURPOSES WITHOUT NOTICE. REVISIONS MAY NOT BE NOTED.

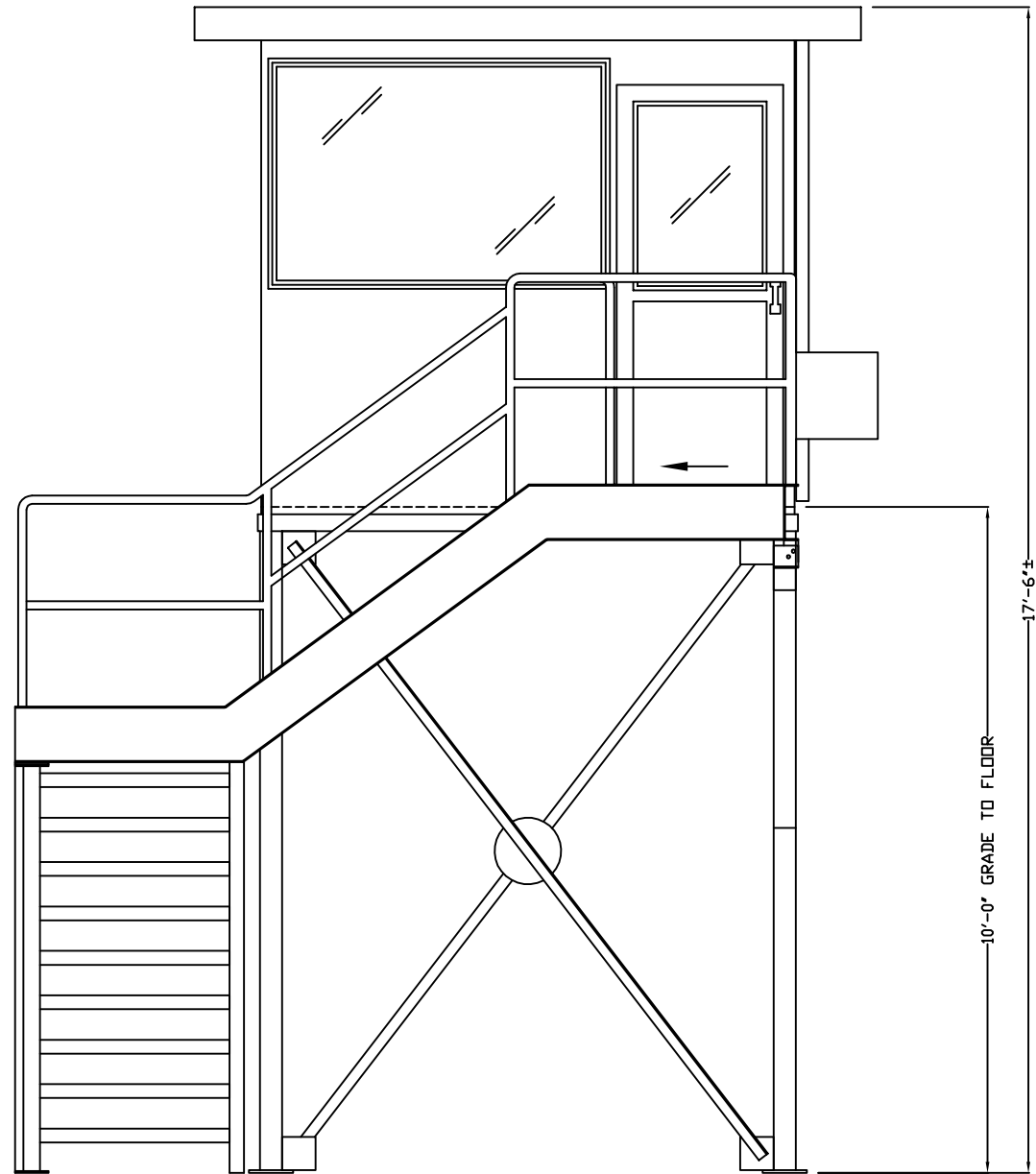
PAR-KUT INTERNATIONAL, INC.
40961 Production Drive
Harrison Twp, Mich.
48045-1351
PH: (586) 468-2947



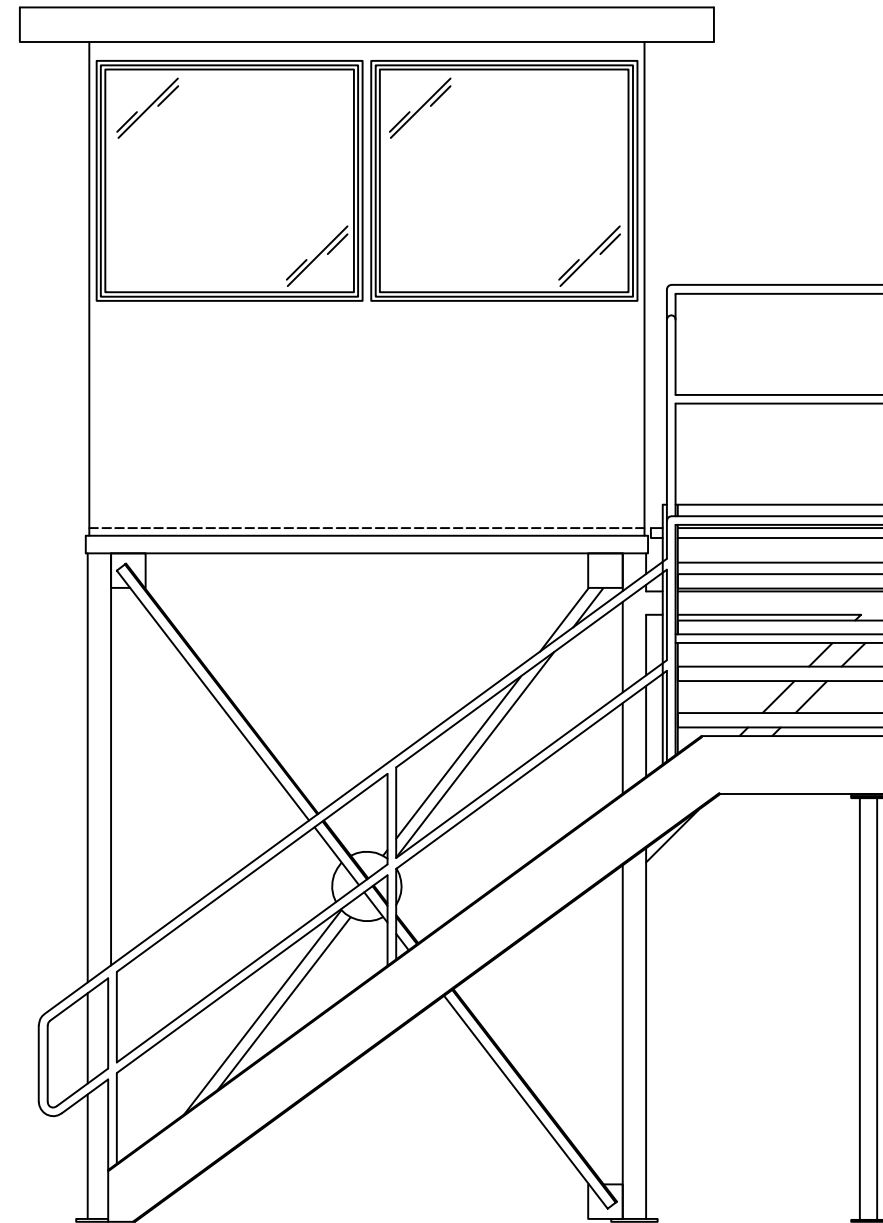
DWG# SEC-015 SHEET A-1

PAR-KUT ELEVATED BOOTH

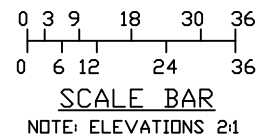
SCALE		DRAWN BY		BASED ON #05-433	
NTS		NSG		REVISED	11-12-2014
DATE	11-23-2005	SIZE	8' X 8'	QTY	1
CHK'D BY:		SALES REPRESENTATIVE			




E1 ELEVATION



E2 ELEVATION



NOTE: THIS PRINT AND DESIGN ARE THE PROPERTY OF PAR-KUT INTERNATIONAL, INC. IT MUST NOT BE REPRODUCED IN ANY MANNER, NOR SHALL IT BE SUBMITTED TO OUTSIDE PARTIES FOR EXAMINATION WITHOUT OUR CONSENT. IT SHALL BE USED ONLY AS A MEANS OF REFERENCE TO WORK DESIGNED AND FURNISHED BY PAR-KUT. PAR-KUT RESERVES THE RIGHT TO MAKE CHANGES TO DESIGN FOR ENGINEERING PURPOSES WITHOUT NOTICE. REVISIONS MAY NOT BE NOTED.		
PAR-KUT INTERNATIONAL, INC. 40961 Production Drive Harrison Twp, Mich. 48045-1351 PH. (586) 468-2947		
DWG#	SEC-015	SHEET A-2
PAR-KUT ELEVATED BOOTH		
BASED ON #05-433		
SCALE NTS	DRAWN BY DNE	REVISED 11-12-2014
DATE 11-29-2005	SIZE 8' X 8'	QTY 1
CHK'D BY:	SALES REPRESENTATIVE MAL NEWCOMB	