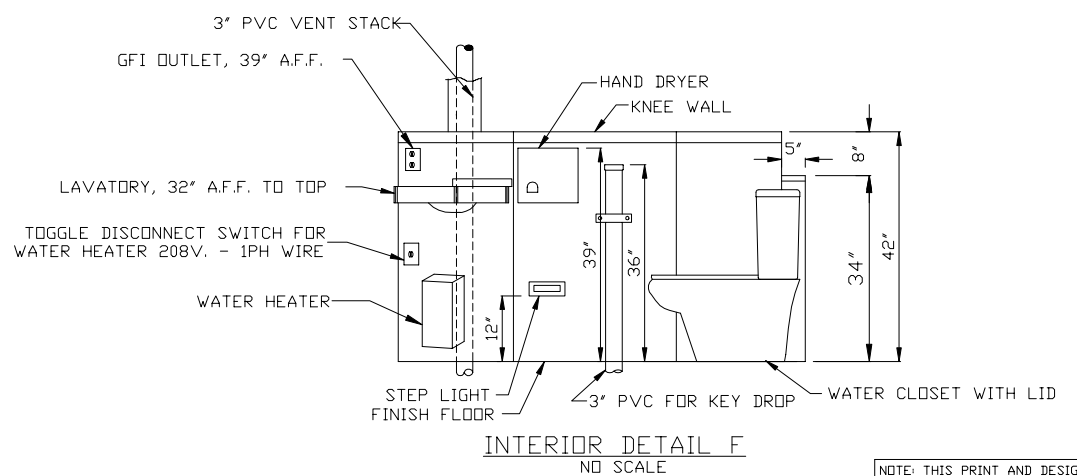
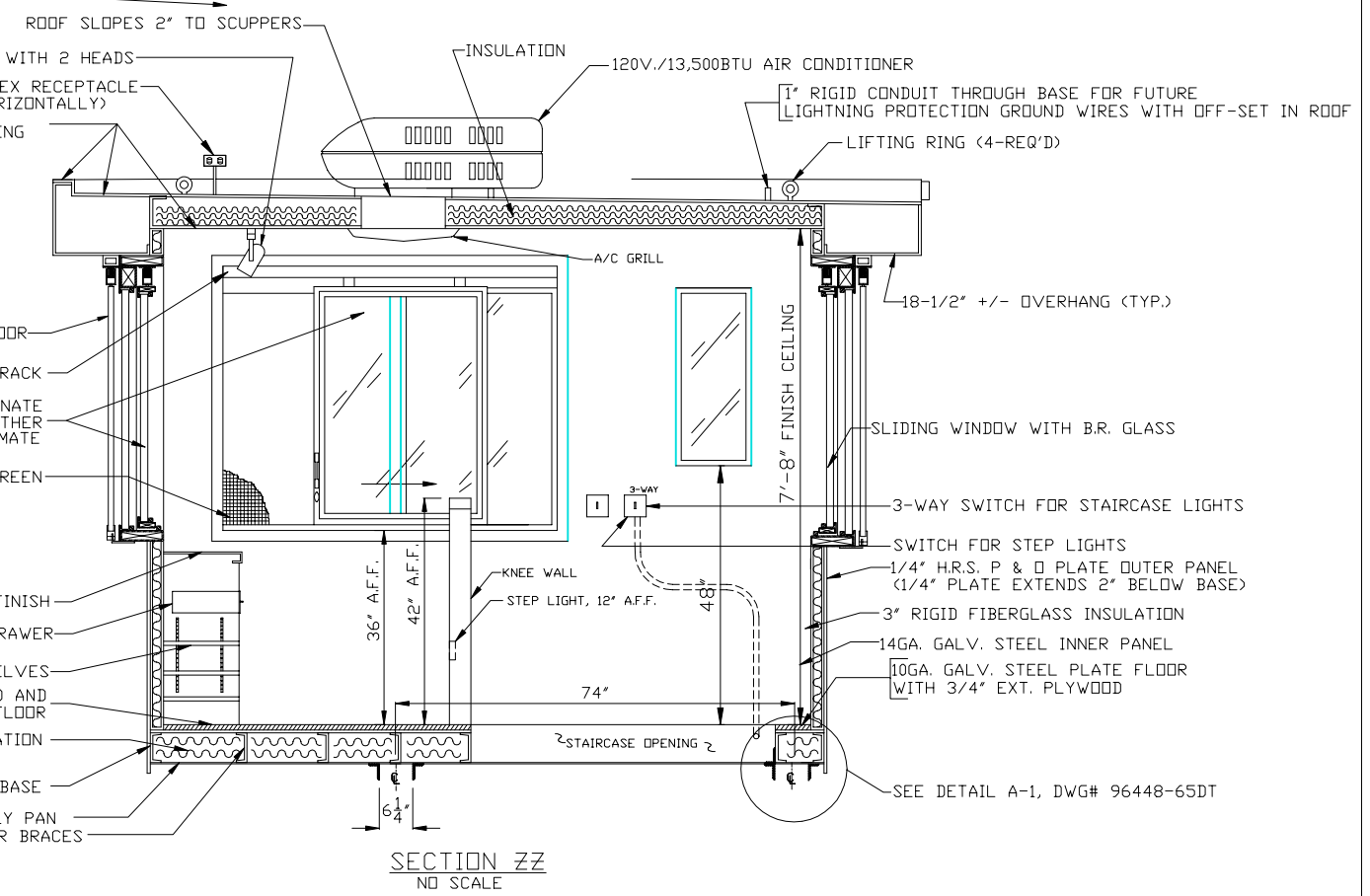


TRACK LIGHTING 150 WATT PAR38 LAMPS WITH 2 HEADS
 WEATHERPROOF GFI DUPLEX RECEPTACLE (MOUNTED HORIZONTALLY)
 14GA. GALV. STEEL ROOF, CANOPY, & CEILING (NFI BULLET RESISTING)

SUB-FLOOR TO CEILING 7'-9"
 FIN. FLOOR TO CEILING 7'-8"
 FIN. FLOOR TO A/C GRILL 7'-5"
 SUB-FLOOR TO SILL 3'-2"
 FIN. FLOOR TO COUNTER 2'-8"

SLIDING SCREEN DOOR
 SLIDING WINDOW TRACK
 1-3/8" CLEAR GLASS CLAD POLYCARBONATE CLASS III BULLET RESISTING WITH WEATHER STRIPPING FOR NORTHERN CLIMATE
 SLIDING BUG SCREEN
 WORK COUNTER WITH A COMPLETE PLASTIC LAMINATE FINISH
 LOCKING STORAGE DRAWER
 2-ADJUSTABLE SHELVES
 10 GA. GALV. STEEL WITH 3/4" PLYWOOD AND RUBBER RAISED DISK TILE FLOOR
 INSULATION
 6" X 8.20# STEEL CHANNEL BASE
 1/4" H.R.S. BELLY PAN
 6" X 8.20# STEEL CHANNEL FLOOR BRACES



1. COUNTER- 16" DEEP WITH A COMPLETE PLASTIC LAMINATE FINISH.
2. LOCKING STORAGE DRAWER WITH PLASTIC LAMINATE FINISH AND HANDLE.
3. 2-ADJUSTABLE STAINLESS STEEL SHELVES.
4. RIFLE REST WITH A COMPLETE PLASTIC LAMINATE FINISH AND 2-DIVIDERS FOR 3-GUNS.
5. SLIDING BUG SCREEN, 4-REQ'D.
6. SPEC. GRADE DUPLEX OUTLET- 110V., (HUBBELL #5362 OR EQUAL) WITH S.S. COVER PLATE, 2-REQ'D & (2) AT 36" MOUNTED IN 2-GANG BOX.
7. 4" X 4" X 4" J-BOX 18" A.F.F. WITH 1" E.M.T. CONDUIT THRU FLOOR FOR DOOR ALARM CONTACT, INTERCOM, TELEPHONE, AND GATE CONTROL IN GUARD TOWER "A" ONLY. CONDUIT STUBS 2" BELOW BASE. 4-REQ'D.
8. 6" X 6" X 4" J-BOX 18" A.F.F. WITH 1-1/4" E.M.T. CONDUIT THRU FLOOR FOR ELECTRICAL POWER FEEDS. ALL OF PAR-KUT WIRING WILL TERMINATE AT THIS BOX. CONDUIT STUBS 2" BELOW BASE.
9. STEP LIGHT RECESSED IN KNEE WALL 120 VOLT WITH 9 WATT FLUORESCENT LAMPS LIGHT FIXTURE. 12" A.F.F. (2-REQ'D)
10. TRACK MOUNTED TO CEILING FOR TRACK LIGHTING.
11. 150 WATT PAR-38 LAMP WITH ADJUSTABLE TRACK LIGHT FIXTURE, 2-REQ'D.
12. DIMMER SWITCH- (HUBBELL #1221 OR EQUAL) FOR DIMMABLE TRACK LIGHT FIXTURES WITH S.S. COVER PLATE. 48" A.F.F. MOUNTED IN 2-GANG BOX.
13. LIGHT SWITCH- (HUBBELL #1221 OR EQUAL) FOR RECESSED STEP LIGHT WITH S.S. COVER PLATE. 48" A.F.F. MOUNTED IN 2-GANG BOX.
14. TOGGLE DISCONNECT SWITCH FOR WATER HEATER 208V. - 1PH WIRE -3.5 AMP OR LARGER.
15. 3-WAY SWITCH- (HUBBELL #1223 OR EQUAL) FOR FUTURE STAIRCASE LIGHTING WITH S.S. COVER PLATE & 3/4" CONDUIT TO STAIRCASE OPENING. 48" A.F.F. (FIXTURES BY OTHERS)
16. HEATER- 208V./4200W. FAN FORCED WITH INTEGRAL THERMOSTAT CONTROL. 2-REQ'D. ONE WILL BE SHIPPED LOOSE AND INSTALLED BY OTHERS ON SITE.
17. AIR CONDITIONER- 120V./13,500BTU ROOF MOUNTED WITH WALL MOUNTED THERMOSTAT CONTROL.
18. TELEPHONE JACK MOUNTED ABOVE COUNTER.
19. TOILET PAPER HOLDER.
20. SPEC. GRADE GROUND FAULT INTERRUPT DUPLEX OUTLET. (HUBBELL #GF5362 OR EQUAL) 39" A.F.F.
21. 1" E.M.T. CONDUIT IN WALL FOR FUTURE LIGHTNING PROTECTION. STUB BELOW BASE 2". 2-REQ'D
22. SCHEDULE 40 3" PVC 36" A.F.F. FOR KEY DROP. STUB 2" BELOW BASE.
23. HAND BLOW DRYER. 39" A.F.F. TO TOP.
24. WATER HEATER- PVI INDUSTRIES MODEL #41 IE 208 VOLT INSTANTANEOUS WATER HEATER.
25. LAVATORY- MANSFIELD "SPRUCE COVE" 16" X 13" VITREOUS WHITE CHINA WITH CHROME TRIM. SEALED TO WALL WITH DOW SILASTIC WHITE TYPE 732. 32" A.F.F.
26. WATER CLOSET- AMERICAN STANDARD NEW CADET EXTENDED BOWL WHITE CHINA WITH OPEN FRONT SEAT & LID. SEALED TO FLOOR WITH DOW SILASTIC WHITE TYPE 732.
27. 2" HOLE IN COUNTER FOR DROP CORDS. 2-REQ'D
28. 120V. DUPLEX OUTLET- SPEC. GRADE WEATHERPROOF GFI (HUBBELL #GF5362 OR EQUAL) ON ROOF FOR POSSIBLE FUTURE EQUIPMENT. MOUNTED HORIZONTALLY.
29. 3" VENT STACK- LOCATED IN KNEE WALL UP THRU ROOF WITH 4" X 4" PAINTED STEEL COVER FOR LAVATORY.
30. COAT HOOK, LOCATED ON VENT STACK COVER AT KNEE WALL.
31. SWITCH FOR EXHUST FAN.
32. EXHUST FAN NUTONE #QT 80, 80 CFM WITH BACK DRAFT DAMPER.
33. NON FUSED POWER DISCONNECT SWITCH MOUNTED ON ROOF FOR AIR CONDITIONER UNIT.

NOTE: PAR-KUT BOOTHS ARE OF SINGLE UNIT WELDED GALVANIZED STEEL CONSTRUCTION, FACTORY ASSEMBLED AND DELIVERED SET UP. FAILURE TO SECURELY ANCHOR BOOTH MAY RESULT IN OVERTURNING OF UNIT AND SERIOUS INJURY TO OCCUPANT.

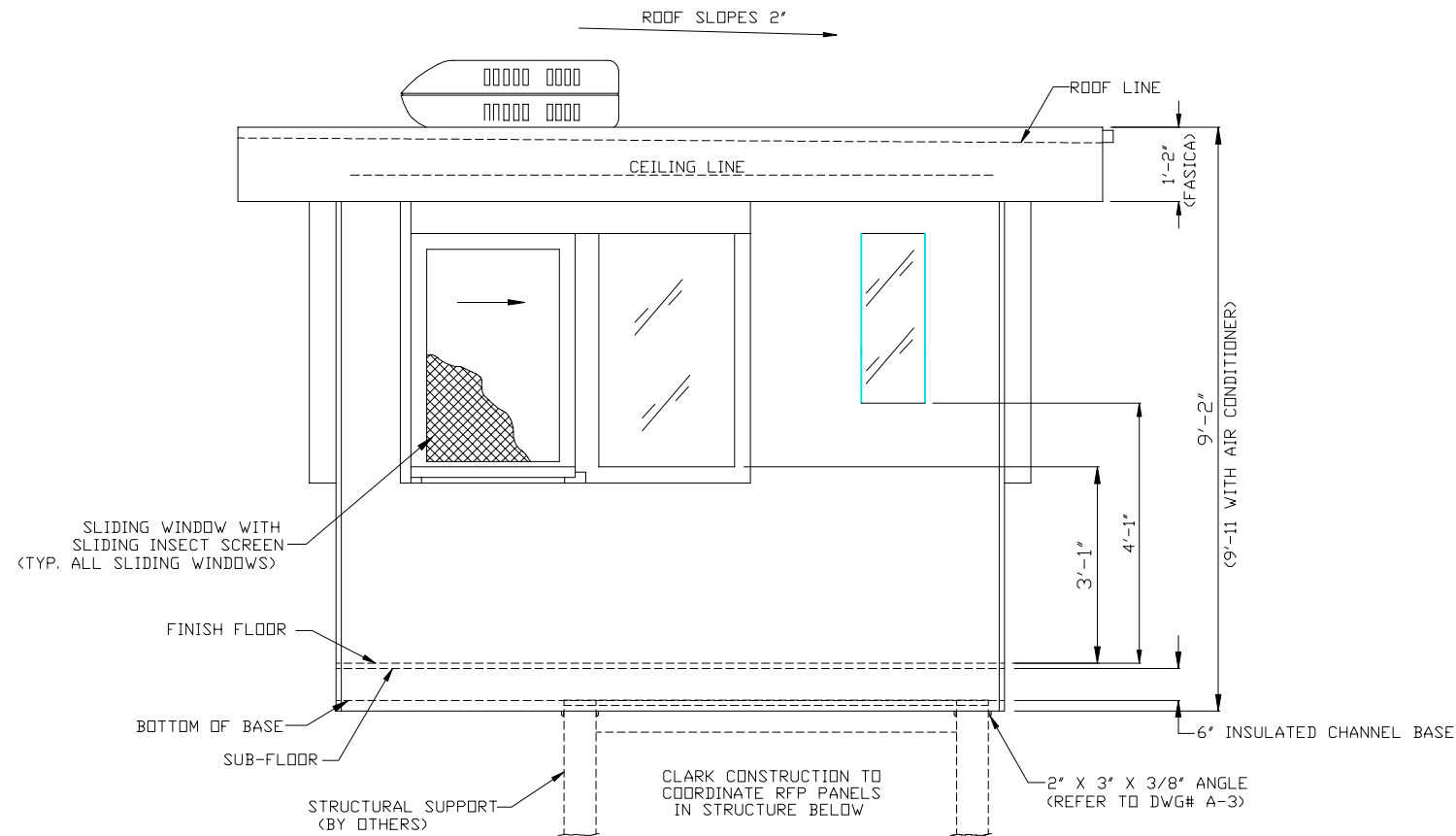
- A. GLAZING TO BE 1-3/8" CLEAR GLASS CLAD POLYCARBONATE CLASS III BULLET RESISTING. OPENING WINDOWS WILL BE PROVIDED WITH PAINTED ALUMINUM SLIDING INSECT SCREENS.
- B. GLAZING SECURED WITH PAINTED STEEL GLASS STOPS. ALL TO HAVE WEATHER STRIPPING FOR NORTHERN CLIMATES.
- C. ALL WIRING SHALL BE #12(MIN) TYPE THIN STRANDED COPPER. RUN IN 3/4" (MIN) E.M.T. PER NATIONAL ELECTRIC CODE. ALL DEVICES ARE BROWN AND IN 4" X 4" X 2-1/8" DEEP BOXES, SET FLUSH WITH WALL & INCLUDE 2-GANG STAINLESS STEEL COVER PLATES.
- D. PAINT- RUST INHIBITIVE EPOXY PRIMER WITH A INDUSTRIAL ENAMEL FINISH.
- E. BOOTH WILL HAVE 6" INSULATED BASE.
- F. FLOOR TO BE 10GA. GALV. PLATE STEEL WITH 3/4" EXTERIOR PLYWOOD AND RAISED RUBBER DISK TILE FLOOR.
- G. BOOTH WALLS WILL HAVE 3" OF INSULATION WITH 1/4" PLATE STEEL OUTER PANEL. OUTER PANEL EXTENDS 2" BELOW BASE.
- H. BOOTH CEILING AND ROOF WILL NFI BE BULLET RESISTANT.
- I. LIFTING RINGS PROVIDED IN ROOF.
- J. ALL OUTLETS & LIGHT SWITCH COVER PLATES WILL BE 4" STAINLESS STEEL.
- K. NO ON SITE WORK BY PAR-KUT. CLARK CONSTRUCTION TO COORDINATE ON SITE WORK.

A/E NOTES			
ENAMEL COLOR:	MORTAR	S-W	# 4011
RUBBER DISK TILE COLOR: BLACK (PLEASE SPECIFY COLOR)			
NO ON SITE WORK BY PAR-KUT. ALL SWITCHES & OUTLETS ARE SPEC. GRADE HUBBELL OR EQUAL. ALL WINDOWS PROVIDED WITH SLIDING INSECT SCREENS. CORNERS OF BOOTH WILL HAVE PAINTED TRIM ANGLES. SCHEDULE 40 3" PVC FOR KEY DROP. COUNTERS TO HAVE COMPLETE PLASTIC LAMINATE FINISH. CLASS III BULLET RESISTING. SUPPORT STRUCTURE BY OTHERS. SPIRAL STAIRCASE, STAND, STAIR LIGHTS & LIGHTNING PROTECTION BY OTHERS. LIGHT SWITCHES ARE RECESSED AT 48" A.F.F. AND CONDUITS ARE CONCEALED.			

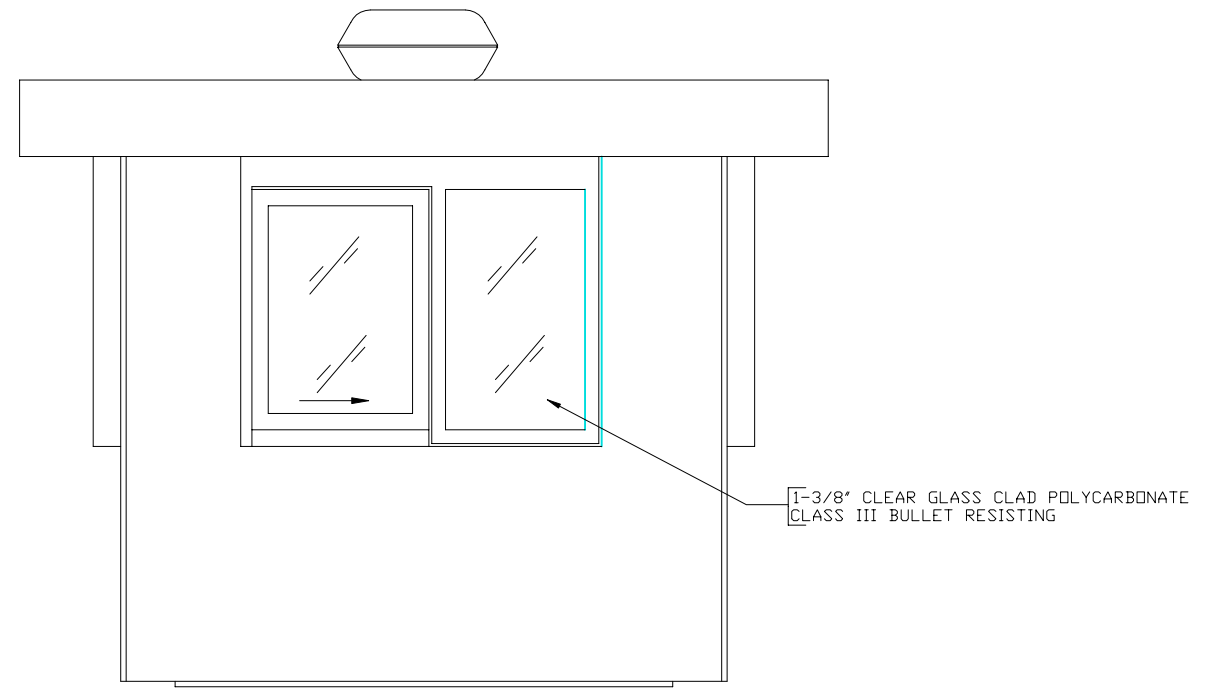
NOTE: THIS PRINT AND DESIGN ARE THE PROPERTY OF PAR-KUT INTERNATIONAL, INC. IT MUST NOT BE REPRODUCED IN ANY MANNER. NOR SHALL IT BE SUBMITTED TO OUTSIDE PARTIES FOR EXAMINATION WITHOUT OUR CONSENT. IT SHALL BE USED ONLY AS A MEANS OF REFERENCE TO WORK DESIGNED AND FURNISHED BY PAR-KUT. PAR-KUT RESERVES THE RIGHT TO MAKE CHANGES TO DESIGN FOR ENGINEERING PURPOSES WITHOUT NOTICE. REVISIONS MAY NOT BE NOTED.

PAR-KUT INTERNATIONAL, INC.
 40961 Production Drive
 Harrison Twp, Mich.
 48045-1351
 PH. (810) 468-2947

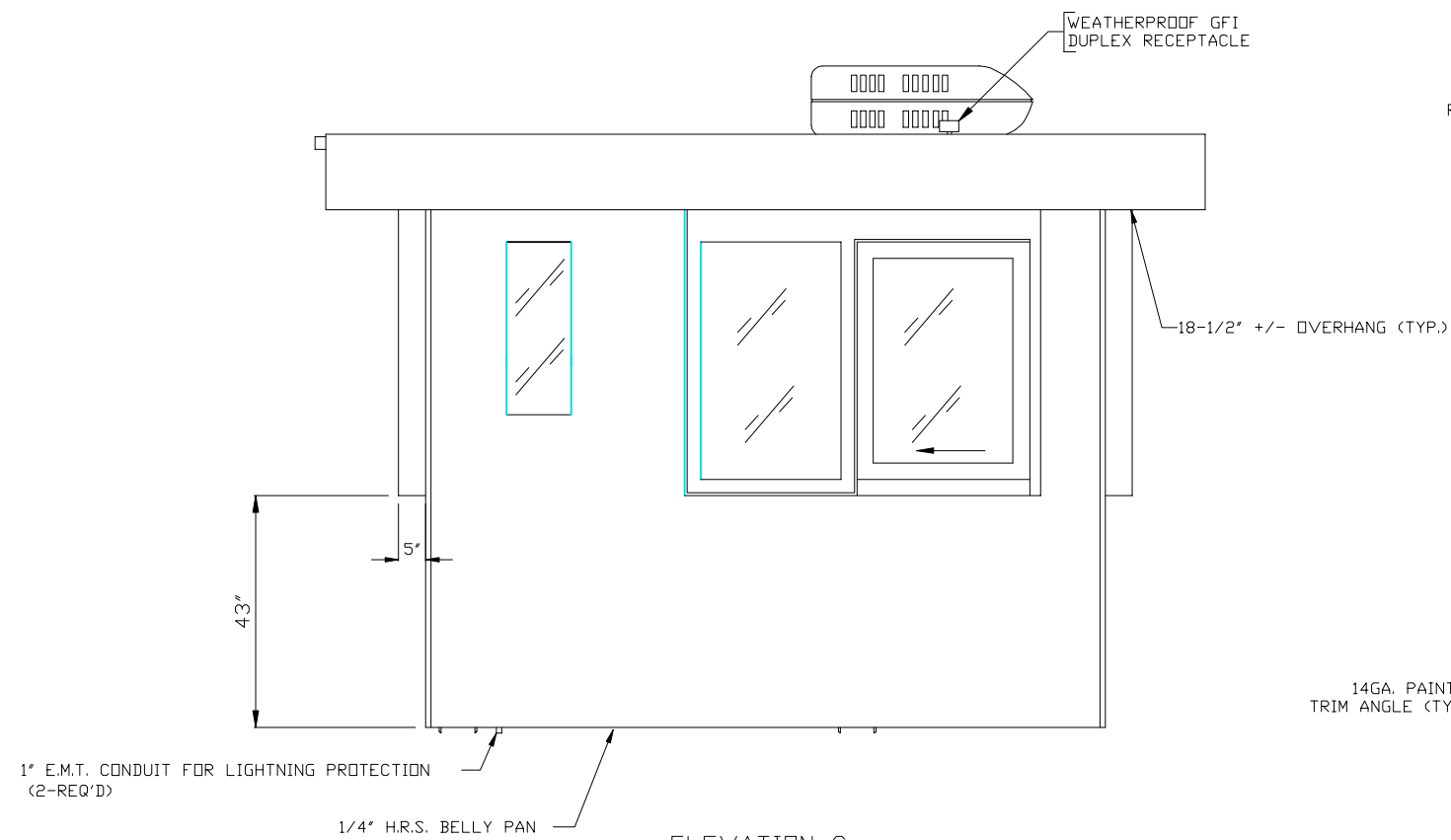
DWG#	0002	SHEET	A-1
#109-GT-BR3			
SCALE	AS NOTED	DRAWN BY	AJP / DLT
DATE	7-25-2000	SIZE	9'-3" X 10'-6"
CHK'D BY:		QTY	
		SALES REPRESENTATIVE	



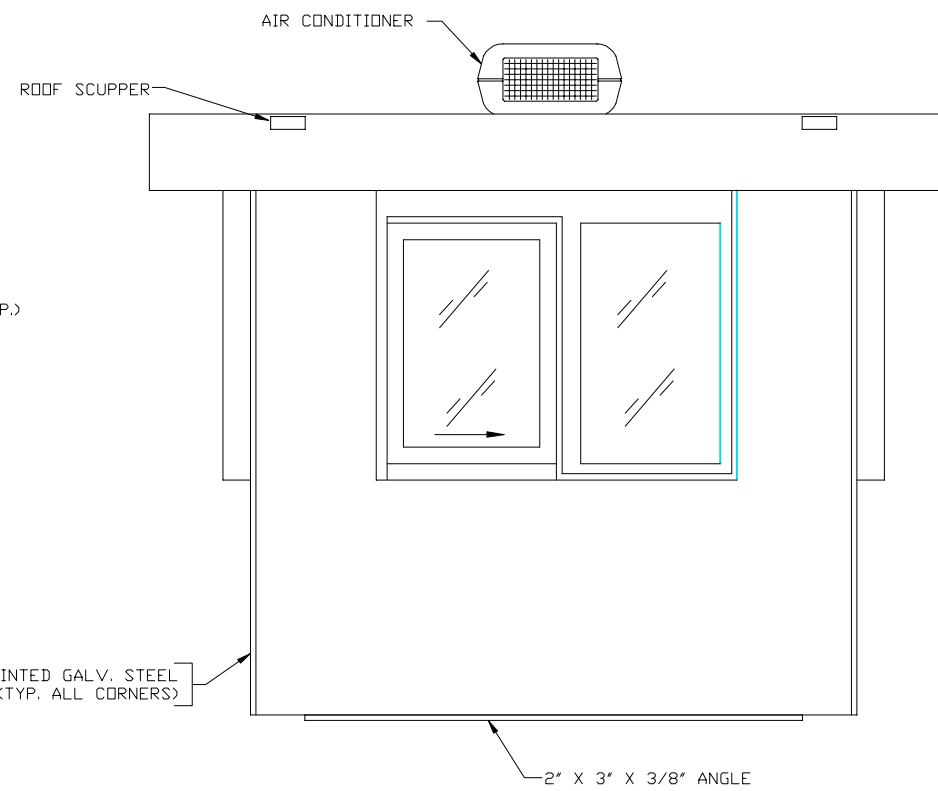
ELEVATION A
(SCREEN SHOWN THIS ELEVATION ONLY)



ELEVATION B
(INSECT SCREEN NOT SHOWN)



ELEVATION C
(INSECT SCREEN NOT SHOWN)



ELEVATION D
(INSECT SCREEN NOT SHOWN)

NOTE: THIS PRINT AND DESIGN ARE THE PROPERTY OF PAR-KUT INTERNATIONAL, INC. IT MUST NOT BE REPRODUCED IN ANY MANNER, NOR SHALL IT BE SUBMITTED TO OUTSIDE PARTIES FOR EXAMINATION WITHOUT OUR CONSENT. IT SHALL BE USED ONLY AS A MEANS OF REFERENCE TO WORK DESIGNED AND FURNISHED BY PAR-KUT. PAR-KUT RESERVES THE RIGHT TO MAKE CHANGES TO DESIGN FOR ENGINEERING PURPOSES WITHOUT NOTICE. REVISIONS MAY NOT BE NOTED.

PAR-KUT INTERNATIONAL, INC.
40961 Production Drive
Harrison Twp, Mich.
48045-1351
PH. (810) 468-2947



DWG# 0002 SHEET A-2

#109-GT-BR3

SCALE AS NOTED	DRAWN BY AJP / DLT	REVISED
DATE 7-24-2000	SIZE 9'-3" X 10'-6"	QTY
CHK'D BY:	SALES REPRESENTATIVE	