

NOTICE: MAXIMUM SAFE TOWING SPEED -- 25 MPH NOT DESIGNED FOR HIGHWAY USE!

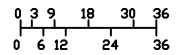
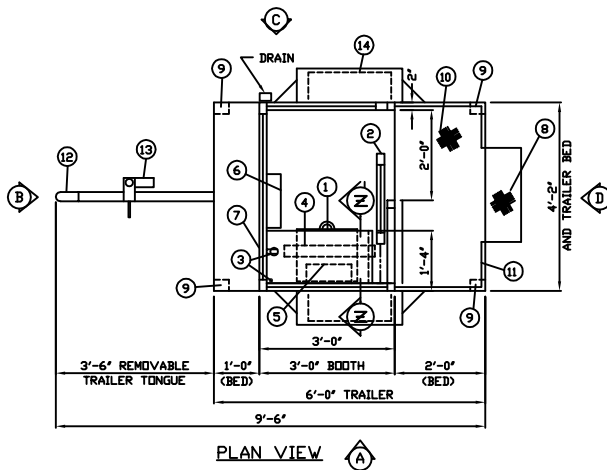
1. 16\"/>
- 2. 24\"/>
- 3. 110V. DUPLEX OUTLET WITH 1-1/4\"/>
- 4. FLUORESCENT LIGHT FIXTURE WITH LAMP AND SWITCH ATTACHED.
- 5. 120V./1500W. FAN FORCED HEATER WITH INTEGRAL THERMOSTAT CONTROL.
- 6. 100AMP RATED CIRCUIT BREAKER PANEL WITH GROUND BAR, MAIN BREAKER INCLUDED.
- 7. #10/3 AWG 10 FOOT POWER CORD WITH TWIST LOCK MALE CORD CAP FOR ELECTRICAL HOOK-UP.

NOTE: THE FOLLOWING ITEMS MAKE UP HEAVY DUTY TRAILER:

8. GRIP STRUT FOLD DOWN STEP.
9. LEVELING JACK, 4-REQ'D.
10. 12GA. GALV. 4-WAY DIAMOND PLATE STEEL TRAILER BED.
11. 1\"/>
- 12. 2\"/>
- 13. REMOVABLE TONGUE WITH TONGUE JACK AND SAFETY CHAINS.
- 14. 13\"/>

NOTE: PAR-KUT BOOTHS ARE OF SINGLE UNIT WELDED GALVANIZED STEEL CONSTRUCTION, FACTORY ASSEMBLED AND DELIVERED SET UP.

- A. ALL GLAZING TO BE CLEAR TEMPERED SAFETY GLASS, SET IN MILL FINISH ALUMINUM WINDOW FRAMES.
- B. BOOTH TO BE PAINTED WITH RUST INHIBITIVE EPOXY PRIMER WITH AN INDUSTRIAL ENAMEL FINISH.
- C. ALL WIRING BY PAR-KUT TO BE #12(MIN) STRANDED COPPER, THHN ENCLOSED IN 1/2\"/>
- D. CANOPY OVERHANG TO BE 3\"/>
- E. TRAILER PAINTED BLACK.
- F. LIFTING RING(S) PROVIDED IN ROOF.
- G. NO ON SITE WORK BY PAR-KUT.



SCALE BAR
NOTE: ELEVATIONS 2x1

NOTE: THIS PRINT AND DESIGN ARE THE PROPERTY OF PAR-KUT INTERNATIONAL, INC. IT MUST NOT BE REPRODUCED IN ANY MANNER, NEAR SHALL IT BE SUBMITTED TO OUTSIDE PARTIES FOR EXAMINATION WITHOUT OUR CONSENT. IT SHALL BE USED ONLY AS A MEANS OF REFERENCE TO WORK DESIGNED AND FURNISHED BY PAR-KUT. PAR-KUT RESERVES THE RIGHT TO MAKE CHANGES TO DESIGN FOR ENGINEERING PURPOSES WITHOUT NOTICE. REVISIONS MAY NOT BE NOTED.

PAR-KUT INTERNATIONAL, INC.
40961 Production Drive
Harrison Twp, Mich.
48045-1361
PH. (610) 468-2947



DWG# 0001 SHEET A-1

#43TLR

A/E NOTES			
PAINT COLOR: _____			
SCALE	DRAWN BY	REVISED	
N.TS	JPS / DLT		
DATE	SIZE	QTY	
7-25-2000	3' X 4'-2"		
CHK'D BY:	SALES REPRESENTATIVE		