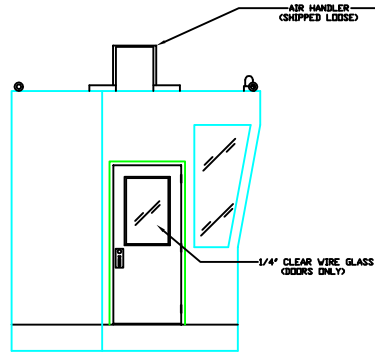
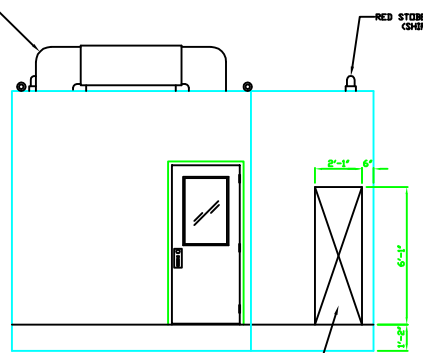


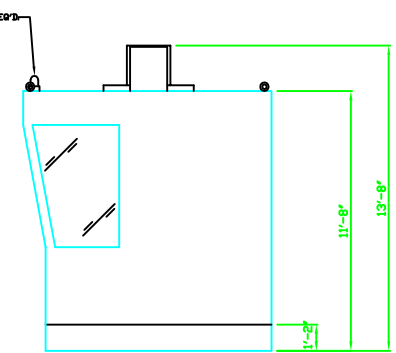
ELEVATION A



ELEVATION B



ELEVATION C
SCALE: 3/8" = 1'-0"

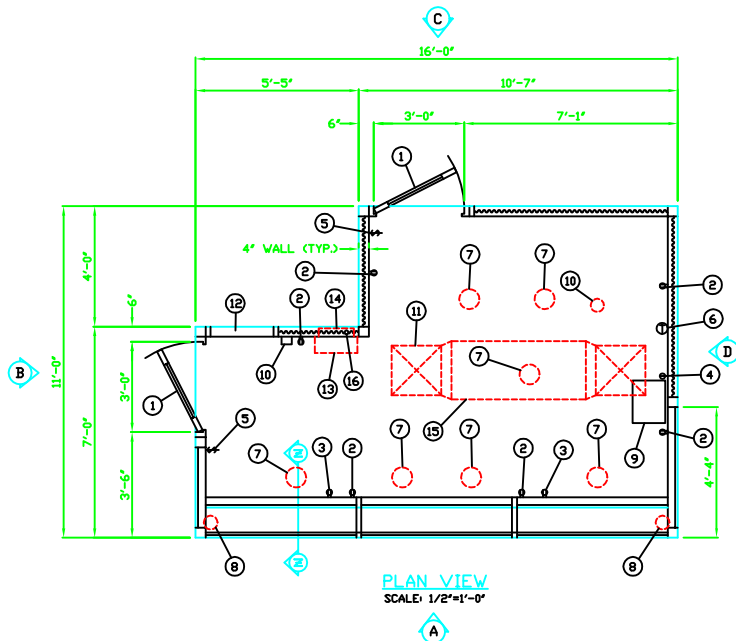


ELEVATION D

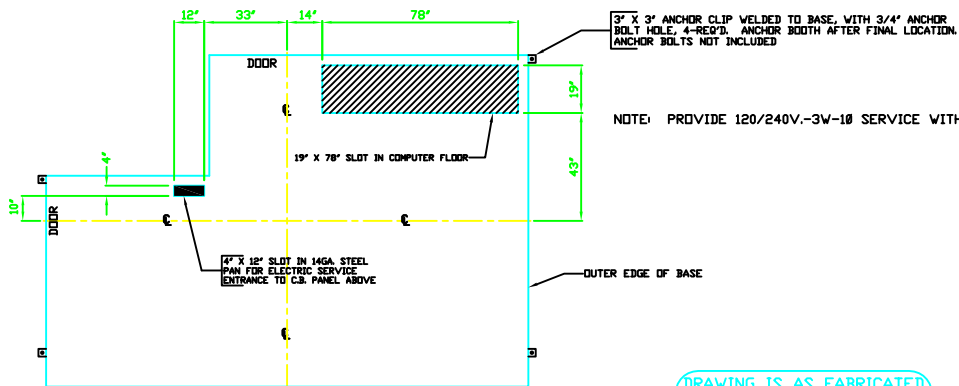
- 3'-0" X 7'-0" SWINGING STEEL DOOR WITH 1/4" CLEAR WIRE GLASS GLAZING, WEATHERSTRIPPING, HEAVY DUTY BALL BEARING BUTTS, HYDRAULIC CLOSER, STAINLESS STEEL KICKPLATES (INTERIOR & EXTERIOR), AND CORBIN #3725 PANIC EXIT HARDWARE, 2-REQ'D.
- DUPLEX OUTLET, 6-REQ'D.
- DUPLEX OUTLET SOLA REGULATED, 2-REQ'D.
- SINGLE RECEPTACLE FOR WATER FOUNTAIN.
- THREE WAY DIMMING LIGHT SWITCH, 2-REQ'D.
- THERMOSTAT FOR AIR CONDITIONER.
- HALO #871-300 INCANDESCENT DOWNLIGHT RECESSED IN CEILING WITH #7920 LAMP, 7-REQ'D.
- 60 FT. CABLE AT DESK HEIGHT, 3/4" DIA. CIRCLE DIRECTLY BELOW FEATURED.
- NORTH AMERICAN SIGNAL #ST-M4 300 CANDELA RED SINGLE FLASH STROBE LIGHT LOCATED ON ROOF, 2-REQ'D. SHIPPED LOOSE.
- DASS #01P4FS08 WATER FOUNTAIN WITH HOT WATER SERVICE AND REFRIGERATED COMPARTMENT.
- 120V. SMOKE DETECTOR MOUNTED ON CEILING WITH RACEWAY TO FLOOR SLOT AND 4' X 4' JUNCTION BOX FOR FUTURE ALARM CONTACTS.
- CARRIER MODEL #83TK3048 48,000BTU PAD MOUNT CONDENSER, AND MODEL #F34MM404000 AIR HANDLER. UNIT TO BE SHIPPED LOOSE.
- 25" X 73" REMOVABLE WALL PANEL WITH STEEL TRIM ANGLE.
- SOLA VOLTAGE REGULATOR #63-23-210-8
- SQUARE #9 6000SERIES FLOOR MOUNTED CIRCUIT BREAKER PANEL WITH 125AMP MAIN BREAKER, GROUND BAR, AND FOUR SPARE 3/4" CONDUIT RUNS FROM BOTTOM OF C.B. PANEL TO FLOOR.
- LOCATION OF LOCKABLE AND WEATHERPROOF HYVAC DISCONNECT SWITCH, 30AMP. (SHIPPED LOOSE)
- 1-1/4" CONDUIT TO ROOF FOR 60AMP DISCONNECT.
- 60AMP/240V. LOCKABLE AND WEATHERPROOF DISCONNECT FOR CONDENSER. (SHIPPED LOOSE)

NOTE: PAR-KUT BOOTHS ARE OF SINGLE UNIT WELDED GALVANIZED STEEL CONSTRUCTION, FACTORY ASSEMBLED AND DELIVERED SET UP. FAILURE TO SECURELY ANCHOR BOOTH MAY RESULT IN OVERTURNING OF UNIT AND SERIOUS INJURY TO OCCUPANT.

- GLAZING IN DOORS TO BE 1/4" CLEAR WIRE GLASS, REMAINING GLAZING TO BE 1" CLEAR TEMPERED INSULATED SAFETY GLASS. TWO PIECES 1/4" GLASS AND 1/2" AIR SPACE.
- BOOTH TO BE PAINTED WITH RUST INHIBITIVE EPOXY PRIMER AND FINISH PAINTED WITH DUPONT IRON INDUSTRIAL ENAMEL.
- ALL WIRING BY PAR-KUT TO BE #180000 STRANDED COPPER, THAW ENCLOSED IN 1/2" ODDO EMT, PER NATIONAL ELECTRIC CODE. FITNESS, FIXTURES AND DEVICES ARE ULL LISTED. ALL WIRING TO TERMINATE AT C.B. PANEL. ALL CIRCUITS HAVE GREEN GROUND WIRE.
- FOUR REMOVABLE LIFTING RINGS PROVIDED IN ROOF.
- NO ON SITE WORK BY PAR-KUT.



PLAN VIEW
SCALE: 1/2"=1'-0"



SERVICE ENTRANCE/ANCHOR BOLT LAYOUT
SCALE: 1/2"=1'-0"

3" X 3" ANCHOR CLIP WELDED TO BASE, WITH 3/4" ANCHOR BOLT HOLE, 4-REQ'D. ANCHOR BOOTH AFTER FINAL LOCATION. ANCHOR BOLTS NOT INCLUDED

NOTE: PROVIDE 120/240V.-3W-1Ø SERVICE WITH GROUND

DRAWING IS AS FABRICATED FOR RECORD PURPOSES ONLY

A/E NOTES
ENAMEL COLOR: EXTERIOR: IRON TO MATCH "S-W MACHINERY GREEN #F65 G 16"
INTERIOR: IRON "WHITE #5080"
FLOOR COLOR: SERIES 300/1000 ASP ACCESS FLOORS, INC. "WINTER WHITE #MR6-5"

SHEET 1 OF 2
92141
U.S. STEEL GROUP
GARY, IN.
P.D.# 161-0087841-004
AS NOTED T.E.B. 4-15-92
4-2-92 11' X 16' 1