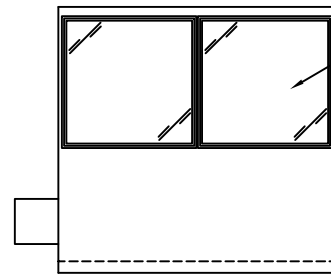
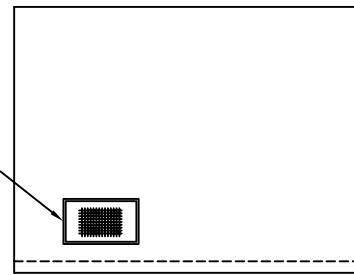


E1 ELEVATION



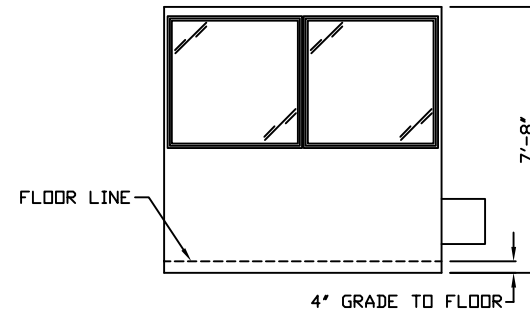
E2 ELEVATION

CLEAR TEMPERED SAFETY GLAZING TYPICAL



E3 ELEVATION

HVAC UNIT

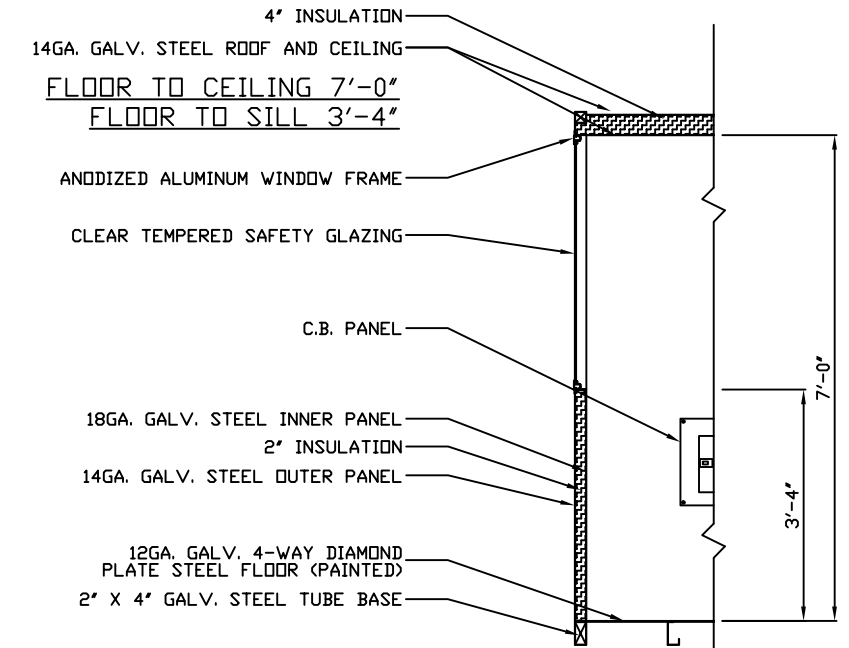


E4 ELEVATION

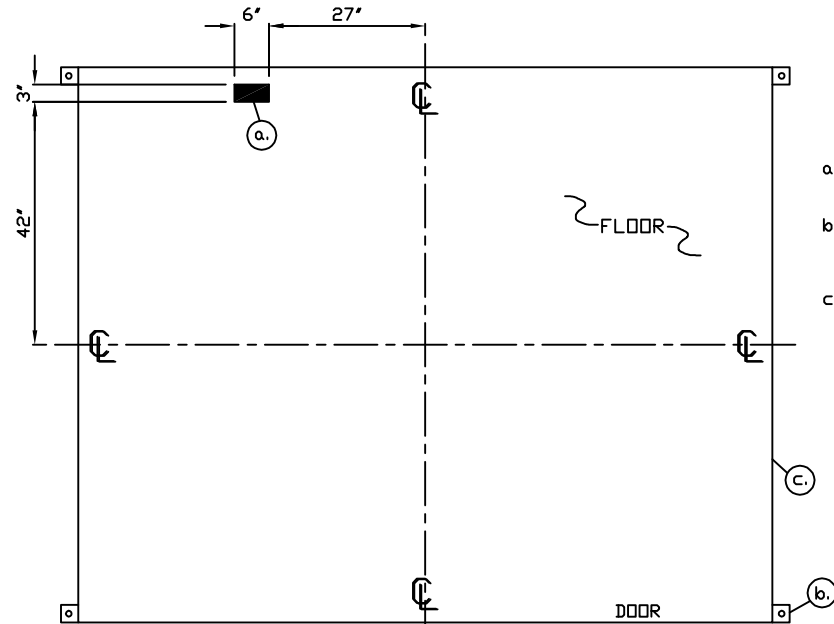
FLOOR LINE

4" GRADE TO FLOOR

7'-8"

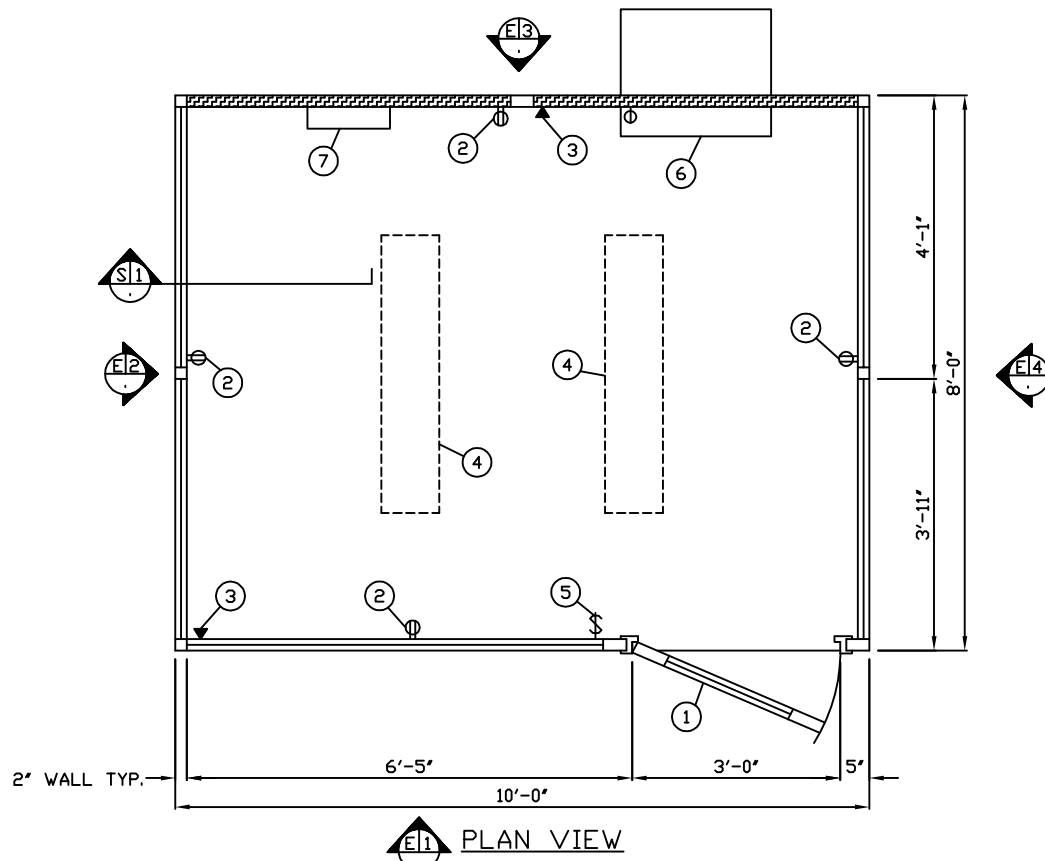


S1 SECTION  
NO SCALE



- a. SLOT IN FLOOR FOR ELECTRIC SERVICE ENTRANCE TO C.B. PANEL ABOVE
- b. 3" X 3" X 1/4" MIN. ANCHOR CLIP WITH 1" ANCHOR BOLT HOLE, 4-REQ'D. ONE EACH CORNER. ANCHOR BOLT AFTER FINAL LOCATION. ANCHOR BOLTS NOT INCLUDED
- c. OUTER EDGE OF BASE

NOTE: PROVIDE 120/240V, 1Ø-3 WIRE SERVICE WITH GROUND. SERVICE ENTRANCE/ANCHOR BOLT LAYOUT

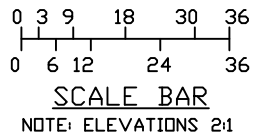


E1 PLAN VIEW

1. DOOR- 36" WIDE SWINGING STEEL DOOR WITH WEATHER-STRIPPING, BALL BEARING BUTTS, SAFETY GLAZING, KEY IN KNOB LOCK, AND HARDWARE.
2. DUPLEX OUTLETS MOUNTED 18" ABOVE FLOOR, 4-REQ'D.
3. PHONE JACK MOUNTED 18" ABOVE FLOOR.
4. FLUORESCENT LIGHT FIXTURE WITH ACRYLIC LENS, 2-REQ'D.
5. SWITCH FOR INTERIOR LIGHTS.
6. HVAC UNIT- 240V/11,600 BTU WALL MOUNTED WITH INTEGRAL THERMOSTAT CONTROL.
7. C.B. PANEL- 12 SPACE 120/240V 1Ø-3 WIRE WITH GROUND. 100 AMP MAIN BREAKER INCLUDED.

NOTE: PAR-KUT BOOTHS ARE OF SINGLE UNIT WELDED GALVANIZED STEEL CONSTRUCTION, FACTORY ASSEMBLED AND DELIVERED SET UP. FAILURE TO SECURELY ANCHOR BOOTH MAY RESULT IN OVERTURNING OF UNIT AND SERIOUS INJURY TO OCCUPANT.

- A. GLAZING- CLEAR TEMPERED SAFETY GLAZING SET IN ANODIZED ALUMINUM WINDOW FRAMES.
- B. PAINT- A RUST INHIBITIVE PRIMER WITH AN INDUSTRIAL FINISH.
- C. ELECTRICAL- ALL WIRING BY PAR-KUT TO BE #12(MIN) STRANDED COPPER, THHN ENCLOSED IN 1/2"(MIN) E.M.T. PER NATIONAL ELECTRIC CODE. FITTINGS, FIXTURES & DEVICES ARE U.L. LABELED. ALL WIRING TO TERMINATE AT C.B. PANEL. ALL CIRCUITS HAVE GREEN GROUND WIRE.
- D. BOOTH WILL HAVE NO CANOPY OVERHANG ON ANY SIDE.
- E. LIFTING RING(S) ARE PROVIDED IN ROOF.
- F. NO ON SITE WORK BY PAR-KUT.



NOTE: THIS PRINT AND DESIGN ARE THE PROPERTY OF PAR-KUT INTERNATIONAL, INC. IT MUST NOT BE REPRODUCED IN ANY MANNER, NOR SHALL IT BE SUBMITTED TO OUTSIDE PARTIES FOR EXAMINATION WITHOUT OUR CONSENT. IT SHALL BE USED ONLY AS A MEANS OF REFERENCE TO WORK DESIGNED AND FURNISHED BY PAR-KUT. PAR-KUT RESERVES THE RIGHT TO MAKE CHANGES TO DESIGN FOR ENGINEERING PURPOSES WITHOUT NOTICE. REVISIONS MAY NOT BE NOTED.

PAR-KUT INTERNATIONAL, INC.  
40961 Production Drive  
Harrison Twp, Mich.  
48045-1551  
PH. (586) 468-2947



DWG# PSQ-002 SHEET A-1

8' X 10' BOOTH

GENERAL NOTES		
PAINT COLOR: DC6110 MACHINE GRAY		
SCALE	DRAWN BY	REVISED
NTS	NSG	
DATE	SIZE	QTY
	8' X 10'	
CHK'D BY:	SALES REPRESENTATIVE	