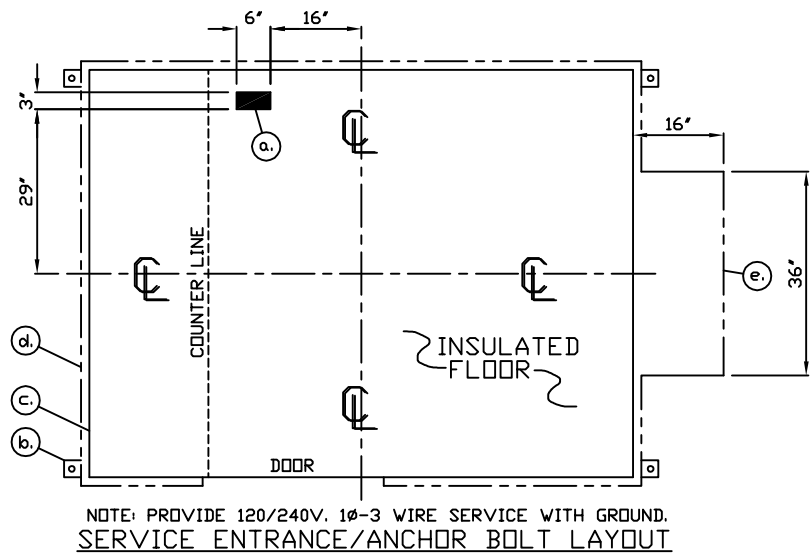


- a. SLOT IN FLOOR FOR ELECTRIC SERVICE ENTRANCE TO C.B. PANEL ABOVE
- b. 3" X 3" X 1/4" MIN. ANCHOR CLIP WITH 1" ANCHOR BOLT HOLE, 4-REQ'D. AS SHOWN. ANCHOR BOLT AFTER FINAL LOCATION. ANCHOR BOLTS NOT INCLUDED
- c. OUTER EDGE OF BASE
- d. OUTER EDGE OF TRIM BASE
- e. EXTENDED TRIM BASE FOR HVAC UNIT

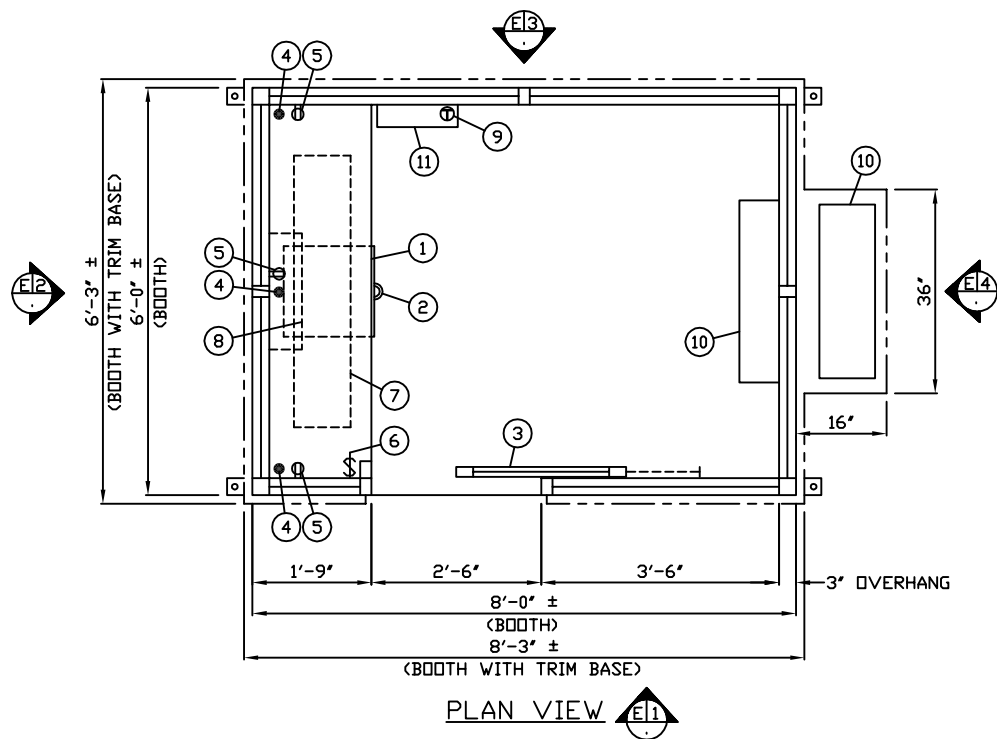


NOTE: PROVIDE 120/240V. 1Ø-3 WIRE SERVICE WITH GROUND. SERVICE ENTRANCE/ANCHOR BOLT LAYOUT

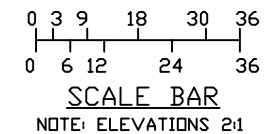
1. COUNTER- 18" DEEP PAINTED GALVANIZED STEEL MOUNTED AT SILL HEIGHT.
2. PAINTED STORAGE DRAWER BENEATH COUNTER.
3. DOOR- 30" WIDE, SLIDING B.R. STEEL WITH WEATHER-STRIPPING, BALL BEARING HANGERS, B.R. SAFETY GLAZING, HEAVY DUTY TRACK, HOOK BOLT LOCK, & HARDWARE.
4. HOLE IN COUNTER FOR DROP CORDS, 3-REQ'D.
5. DUPLEX OUTLET- MOUNTED BELOW COUNTER, 3-REQ'D.
6. LIGHT SWITCH MOUNTED BELOW COUNTER FOR INTERIOR LIGHT.
7. LIGHT- FLUORESCENT LIGHT FIXTURE WITH LENS.
8. HEATER- 240V./5,600 WATT FAN FORCED WITH INTEGRAL THERMOSTAT CONTROL.
9. REMOTE CONTROL FOR HVAC AIR CONDITIONER UNIT.
10. SPLIT PACK HVAC AIR CONDITIONER UNIT 12,200 BTU COOLING CAPACITY.
11. C.B. PANEL- 12 SPACE 120/240V. 1Ø-3 WIRE WITH GROUND BAR. 100 AMP MAIN BREAKER IS INCLUDED.

NOTE: PAR-KUT BOOTHS ARE OF SINGLE UNIT WELDED GALVANIZED STEEL CONSTRUCTION, FACTORY ASSEMBLED AND DELIVERED SET UP. FAILURE TO SECURELY ANCHOR BOOTH MAY RESULT IN OVERTURNING OF UNIT AND SERIOUS INJURY TO OCCUPANT.

- A. GLAZING TO BE BULLET RESISTING CLEAR SAFETY GLAZING WITH 1-1/2" PAINTED STEEL EXTERIOR WINDOW FRAMES, 1" PAINTED STEEL MULLIONS AND 3/4" INTERIOR GLAZING STOPS.
- B. PAINT- A RUST INHIBITIVE PRIMER WITH AN INDUSTRIAL FINISH.
- C. ELECTRICAL- ALL WIRING BY PAR-KUT TO BE #12(MIN) STRANDED COPPER, THHN ENCLOSED IN 1/2"(MIN) E.M.T. PER NATIONAL ELECTRIC CODE. FITTINGS, FIXTURES & DEVICES ARE U.L. LABELED. ALL WIRING TO TERMINATE AT C.B. PANEL. ALL CIRCUITS HAVE GREEN GROUND WIRE.
- D. BOOTH WILL HAVE A 9" CANOPY OVERHANG ON ALL SIDES.
- E. REMOVABLE LIFTING RING(S) ARE PROVIDED IN STANDING SEAM ROOF.
- F. NO ON SITE WORK BY PAR-KUT.
- G. EXTERIOR PLATE AND GLAZING SHALL MEET U.L. 752 BULLET RESISTING LEVEL IV CLASSIFICATION.



NOTE: FLOOR, ROOF, FASCIA, SOFFIT, CROWN MOLDING, RAISED RIBS, TRIM BASE AND AIR CONDITIONER ARE NOT BULLET RESISTING.



NOTE: THIS PRINT AND DESIGN ARE THE PROPERTY OF PAR-KUT INTERNATIONAL, INC. IT MUST NOT BE REPRODUCED IN ANY MANNER, NOR SHALL IT BE SUBMITTED TO OUTSIDE PARTIES FOR EXAMINATION WITHOUT OUR CONSENT. IT SHALL BE USED ONLY AS A MEANS OF REFERENCE TO WORK DESIGNED AND FURNISHED BY PAR-KUT. PAR-KUT RESERVES THE RIGHT TO MAKE CHANGES TO DESIGN FOR ENGINEERING PURPOSES WITHOUT NOTICE. REVISIONS MAY NOT BE NOTED.

PAR-KUT INTERNATIONAL, INC.
 40961 Production Drive
 Harrison Twp, Mich.
 48045-1351
 PH. (586) 468-2947



DWG# PREZ-004 SHEET A-1

6' X 8' PREZ

SCALE	DRAWN BY	REVISED
NTS	AJP	11-14-2014
DATE	SIZE	QTY
8-28-2003	6'± X 8'±	1
CHK'D BY:	SALES REPRESENTATIVE	

GENERAL NOTES