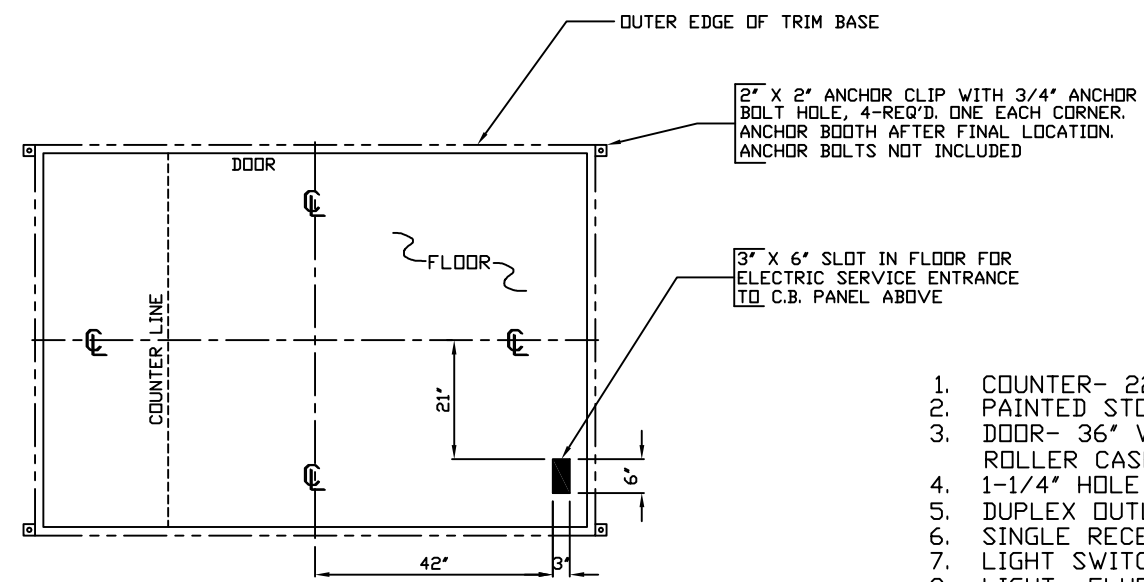


**A.D.A. NOTE**  
 BOOTH MUST BE HANDICAP ACCESSIBLE. THE FOUNDATION MAY BE RECESSED OR A 1:12 RAMP MUST BE PROVIDED SO THAT MAXIMUM CHANGE IN LEVEL FROM GRADE TO FINISH FLOOR DOES NOT EXCEED 1/4"

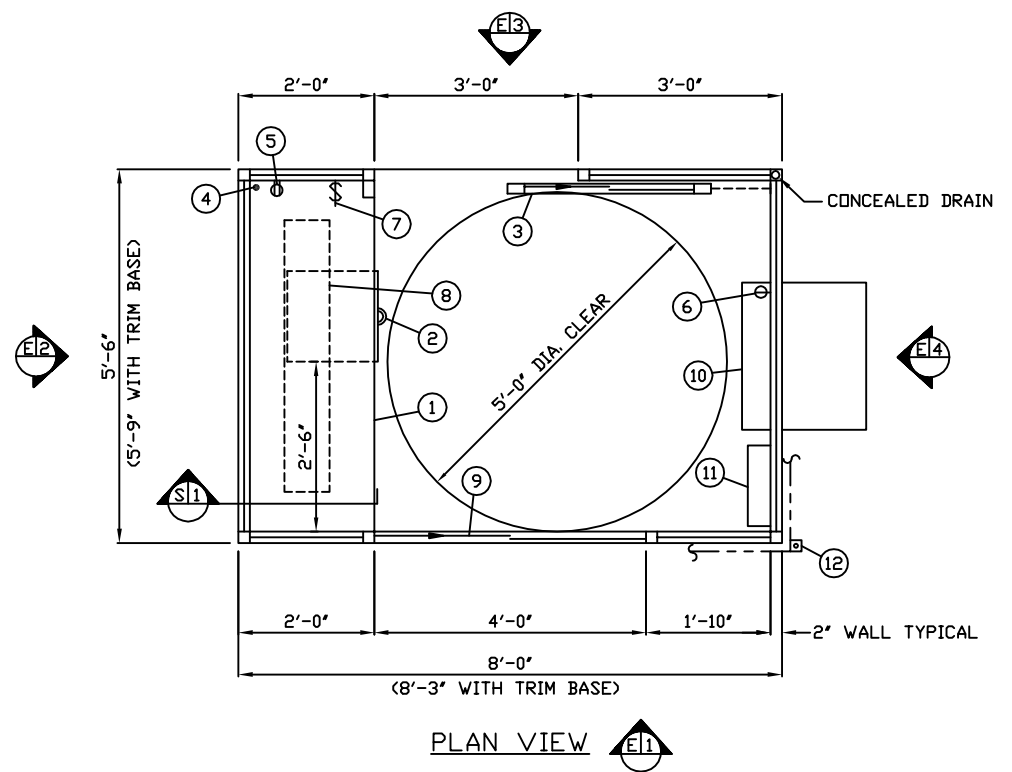


NOTE: PROVIDE 120/240V. 1Ø-3 WIRE SERVICE WITH GROUND. SERVICE ENTRANCE/ANCHOR BOLT LAYOUT

1. COUNTER- 22" DEEP PAINTED GALVANIZED STEEL, 32" ABOVE FLOOR.
2. PAINTED STORAGE DRAWER BENEATH COUNTER.
3. DOOR- 36" WIDE, SLIDING STEEL WITH WEATHER-STRIPPING, BALL BEARING HANGERS, ROLLER CASHIER WINDOW, SAFETY GLAZING, HEAVY DUTY TRACK, HOOK BOLT LOCK, & HARDWARE.
4. 1-1/4" HOLE IN COUNTER FOR DROP CORDS TO OUTLET.
5. DUPLEX OUTLET- MOUNTED BELOW COUNTER.
6. SINGLE RECEPTACLE FOR COMBINATION HEAT/COOL UNIT.
7. LIGHT SWITCH FOR INTERIOR LIGHT.
8. LIGHT- FLUORESCENT STRIP LIGHT FIXTURE.
9. ROLLER CASHIER WINDOW.
10. COMBINATION HEAT/COOL UNIT- 240V./11,600 BTU WALL MOUNTED WITH INTEGRAL THERMOSTAT CONTROL.
11. C.B. PANEL- 120/240V. 1Ø-3 WIRE WITH GROUND BAR. MAIN BREAKER IS INCLUDED.
12. ANCHOR CLIP- 2" X 2" STEEL WELDED TO BASE AT GRADE WITH 3/4" ANCHOR BOLT HOLE. 4-REQ'D. ANCHOR BOOTH AFTER FINAL LOCATION. ANCHOR BOLTS NOT INCLUDED.

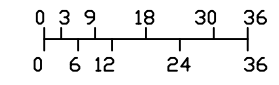
NOTE: PAR-KUT BOOTHS ARE OF SINGLE UNIT WELDED GALVANIZED STEEL CONSTRUCTION, FACTORY ASSEMBLED AND DELIVERED SET UP. FAILURE TO SECURELY ANCHOR BOOTH MAY RESULT IN OVERTURNING OF UNIT AND SERIOUS INJURY TO OCCUPANT.

- A. GLAZING TO BE TINTED TEMPERED SAFETY GLASS SET IN PAINTED WINDOW FRAMES.
- B. PAINT- A RUST INHIBITIVE EPOXY PRIMER WITH INDUSTRIAL ACRYLIC EPOXY FINISH.
- C. ELECTRICAL- ALL WIRING BY PAR-KUT TO BE #12(MIN) STRANDED COPPER, THHN ENCLOSED IN 1/2"(MIN) E.M.T. PER NATIONAL ELECTRIC CODE. FITTINGS, FIXTURES & DEVICES ARE U.L. LABELED. ALL WIRING TO TERMINATE AT C.B. PANEL. ALL CIRCUITS HAVE GREEN GROUND WIRE.
- D. BOOTH WILL HAVE A 6" CANOPY OVERHANG ON ALL SIDES.
- E. LOWER EXTERIOR WALL PANELS TO HAVE RAISED MULLION ARCHITECTURAL TREATMENT.
- F. BOOTH WILL HAVE CROWN MOLDING ABOVE WINDOW FRAMES.
- G. ROOF TOP WILL BE PAINTED EXPANDED METAL.
- H. NO LIFTING RING(S) ARE PROVIDED IN ROOF.
- I. NO ON SITE WORK BY PAR-KUT.



NOTE: THIS PRINT AND DESIGN ARE THE PROPERTY OF PAR-KUT INTERNATIONAL, INC. IT MUST NOT BE REPRODUCED IN ANY MANNER, NOR SHALL IT BE SUBMITTED TO OUTSIDE PARTIES FOR EXAMINATION WITHOUT OUR CONSENT. IT SHALL BE USED ONLY AS A MEANS OF REFERENCE TO WORK DESIGNED AND FURNISHED BY PAR-KUT. PAR-KUT RESERVES THE RIGHT TO MAKE CHANGES TO DESIGN FOR ENGINEERING PURPOSES WITHOUT NOTICE. REVISIONS MAY NOT BE NOTED.

PAR-KUT INTERNATIONAL, INC.  
 40961 Production Drive  
 Harrison Twp, Mich.  
 48045-1351  
 PH. (810) 468-2947



A/E NOTES		
BOOTH COLOR:	CLAY TAN	#1600
ROOF COLOR:	FIRE RED	#7100
TINTED GLAZING COLOR:	BRONZE	

DWG#	2K343	SHEET	A-1
KEVIN FOLEY MCNUTT-BROWN SERVICE, INC. GATLINBURG, TN			
PD#	8101	SCALE	NTS
DRAWN BY	AJP	REVISED	11-11-2014
DATE	5-31-2000	SIZE	5'-6" X 8'
CHK'D BY:		QTY	1
		SALES REPRESENTATIVE TOM DUEMLING	