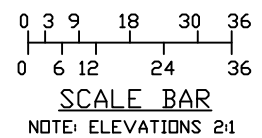
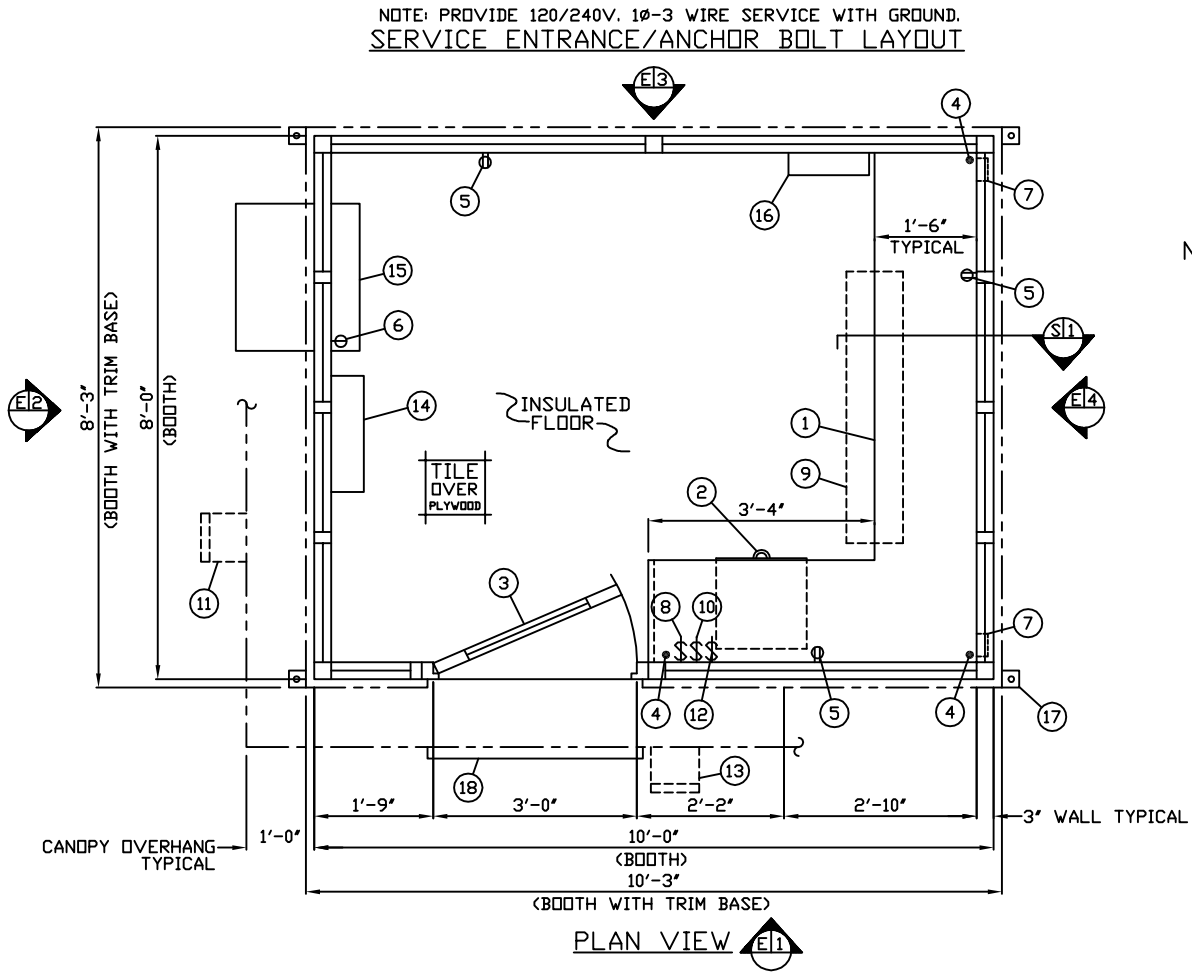


- a. 3" X 6" SLOT IN FLOOR FOR ELECTRIC SERVICE ENTRANCE TO C.B. PANEL ABOVE.
- b. 3" X 3" X 1/4" MIN. ANCHOR CLIP WITH 1" ANCHOR BOLT HOLE, 4-REQ'D. ONE EACH CORNER. ANCHOR BOOTH AFTER FINAL LOCATION. ANCHOR BOLTS NOT INCLUDED.
- c. OUTER EDGE OF BASE
- d. OUTER EDGE OF TRIM BASE.

1. COUNTER- 18" DEEP GALVANIZED STEEL WITH 1/2" PARTICLE BOARD AND PLASTIC LAMINATE TOP AND EDGE MOUNTED 36" ABOVE FINISH FLOOR.
2. PAINTED STORAGE DRAWER BENEATH COUNTER.
3. DOOR- 36" WIDE, SWINGING STEEL WITH WEATHER-STRIPPING, BALL BEARING BUTTS, SAFETY GLAZING, HYDRAULIC CLOSER, KEY IN KNOB LOCK, & HARDWARE.
4. 1-1/4" HOLE IN COUNTER FOR DROP CORDS, 3-REQ'D.
5. DUPLEX OUTLET- MOUNTED BELOW COUNTER, 3-REQ'D.
6. SINGLE RECEPTACLE FOR AIR CONDITIONER UNIT.
7. JUNCTION BOX MOUNTED IN WALL NEAR FLOOR SLOT WITH 3/4" RACEWAY TO ANOTHER JUNCTION BOX IN WALL FOR FUTURE COMMUNICATION LINES BY OTHERS. MOUNTED 6" ABOVE FINISH FLOOR.
8. LIGHT SWITCH FOR INTERIOR LIGHT IN OFFICE AREA.
9. LIGHT- FLUORESCENT LIGHT FIXTURE WITH LENS.
10. LIGHT SWITCH FOR EXTERIOR LIGHT ITEM #11.
11. EXTERIOR HIGH PRESSURE SODIUM LIGHT WITH 100 WATT MOUNTED TO FASCIA.
12. LIGHT SWITCH FOR EXTERIOR LIGHT ITEM #13.
13. EXTERIOR HIGH PRESSURE SODIUM LIGHT WITH 100 WATT MOUNTED TO FASCIA.
14. HEATER- 240V./5,600 WATT FAN FORCED WITH INTEGRAL THERMOSTAT CONTROL.
15. AIR CONDITIONER 120V./8,000 BTU WALL MOUNTED WITH INTEGRAL THERMOSTAT CONTROL.
16. C.B. PANEL- 12 SPACE 120/240V. 1Ø-3 WIRE WITH GROUND BAR. 100 AMP MAIN BREAKER IS INCLUDED.
17. ANCHOR CLIP- 3" X 3" X 1/4" MIN. STEEL WELDED TO BASE AT GRADE WITH 1" ANCHOR BOLT HOLE. 4-REQ'D. ANCHOR BOOTH AFTER FINAL LOCATION. ANCHOR BOLTS NOT INCLUDED.
18. DRIP EDGE OVER DOOR.

NOTE: PAR-KUT BOOTHS ARE OF SINGLE UNIT WELDED GALVANIZED STEEL CONSTRUCTION, FACTORY ASSEMBLED AND DELIVERED SET UP. FAILURE TO SECURELY ANCHOR BOOTH MAY RESULT IN OVERTURNING OF UNIT AND SERIOUS INJURY TO OCCUPANT.

- A. GLAZING TO BE CLEAR INSULATED SAFETY GLAZING IN FIXED WINDOWS AND CLEAR TEMPERED SAFETY GLAZING IN OPERATING WINDOWS. ALL TO HAVE 1-1/2" PAINTED STEEL WINDOWS FRAMES AND ALUMINUM INTERIOR GLAZING STOPS.
- B. PAINT- A RUST INHIBITIVE PRIMER WITH AN INDUSTRIAL FINISH.
- C. ELECTRICAL- ALL WIRING BY PAR-KUT TO BE #12(MIN) STRANDED COPPER, THHN ENCLOSED IN 1/2"(MIN) E.M.T. PER NATIONAL ELECTRIC CODE. FITTINGS, FIXTURES & DEVICES ARE U.L. LABELED. ALL WIRING TO TERMINATE AT C.B. PANEL. ALL CIRCUITS HAVE GREEN GROUND WIRE.
- D. BOOTH WILL HAVE A 12" CANOPY OVERHANG ON ALL SIDES.
- E. NO LIFTING RING(S) ARE PROVIDED.
- F. NO ON SITE WORK BY PAR-KUT.



A/E NOTES	
PAIN COLOR: MILL IVORY	SW #4036
ROOF COLOR: COPPERPLATE	SW #4038
(VCT) TILE COLOR: BLUSH TONE ROSE	#51806
PLASTIC LAMINATE COLOR: SAND NEBULA	WILSON ART #4626

NOTE: THIS PRINT AND DESIGN ARE THE PROPERTY OF PAR-KUT INTERNATIONAL, INC. IT MUST NOT BE REPRODUCED IN ANY MANNER, NOR SHALL IT BE SUBMITTED TO OUTSIDE PARTIES FOR EXAMINATION WITHOUT OUR CONSENT. IT SHALL BE USED ONLY AS A MEANS OF REFERENCE TO WORK DESIGNED AND FURNISHED BY PAR-KUT. PAR-KUT RESERVES THE RIGHT TO MAKE CHANGES TO DESIGN FOR ENGINEERING PURPOSES WITHOUT NOTICE. REVISIONS MAY NOT BE NOTED.

PAR-KUT INTERNATIONAL, INC.
 40961 Production Drive
 Harrison Twp, Mich.
 48045-1351
 PH. (810) 468-2947

DWG# 2K521 SHEET A-1

HENRY FORD MUSEUM
 DEARBORN, MI

DATE: 10-11-2000	SCALE: NTS	DRAWN BY: AJP	REVISED: 11-7-2014
CHK'D BY:	SIZE: 8' X 10'	QTY: 1	SALES REPRESENTATIVE: JIM SMITH