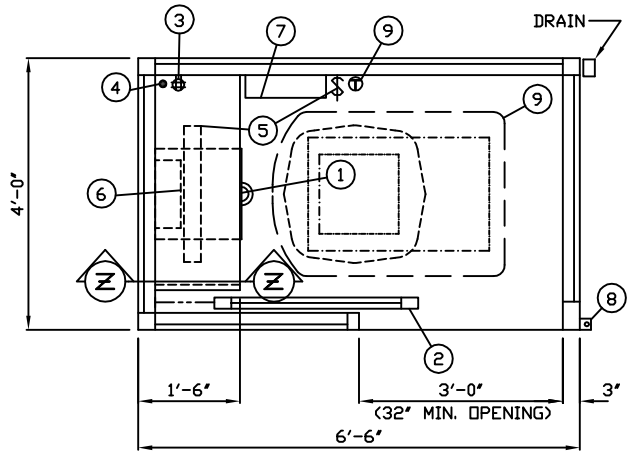


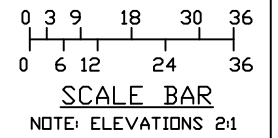
SERVICE ENTRANCE/ANCHOR BOLT LAYOUT

1. 18" DEEP PAINTED STEEL COUNTER WITH STORAGE DRAWER BENEATH.
2. 36" WIDE SLIDING STEEL DOOR (32" MIN. CLEAR OPENING).
3. QUAD OUTLET MOUNTED BELOW COUNTER.
4. HOLE IN COUNTER.
5. FLUORESCENT LIGHT FIXTURE WITH WALL SWITCH.
6. 120V./1500W. FAN FORCED HEATER.
7. CIRCUIT BREAKER PANEL, 12-SPACE 100 AMP MAIN BREAKER INCLUDED.
8. 2" X 2" ANCHOR CLIP, 4-REQ'D., ONE EACH CORNER. ANCHOR BOLTS NOT INCLUDED.
9. AIR CONDITIONER 120V./13,500 BTU WITH WALL MOUNTED THERMOSTAT CONTROL.

NOTE: PAR-KUT BOOTHS ARE OF SINGLE UNIT WELDED GALVANIZED STEEL CONSTRUCTION. FACTORY ASSEMBLED AND DELIVERED SET UP. BOOTHS ARE GLAZED, INSULATED, WIRED, AND FINISH PAINTED COLOR OF CHOICE. (FROM PAR-KUT STANDARDS)

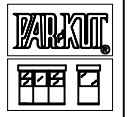


PLAN VIEW



NOTE: THIS PRINT AND DESIGN ARE THE PROPERTY OF PAR-KUT INTERNATIONAL, INC. IT MUST NOT BE REPRODUCED IN ANY MANNER, NOR SHALL IT BE SUBMITTED TO OUTSIDE PARTIES FOR EXAMINATION WITHOUT OUR CONSENT. IT SHALL BE USED ONLY AS A MEANS OF REFERENCE TO WORK DESIGNED AND FURNISHED BY PAR-KUT. PAR-KUT RESERVES THE RIGHT TO MAKE CHANGES TO DESIGN FOR ENGINEERING PURPOSES WITHOUT NOTICE. REVISIONS MAY NOT BE NOTED.

PAR-KUT INTERNATIONAL, INC.
 40961 Production Drive
 Harrison Twp, Mich.
 48045-1351
 PH. (586) 468-2947



DWG# 664-F SHEET A-1

GENERAL NOTES

PAINT COLOR: _____
 TINTED GLAZING COLOR: _____

MODEL 664-F

PD#	VERBAL		
SCALE	NTS	DRAWN BY	REVISED
		DNE / AJP	11-13-2014
DATE	7-31-2003	SIZE	4' X 6'-6"
CHK'D BY:		QTY	2
		SALES REPRESENTATIVE	