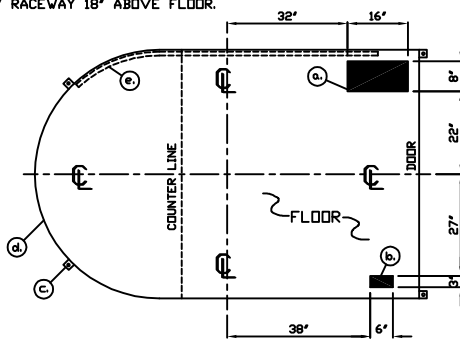
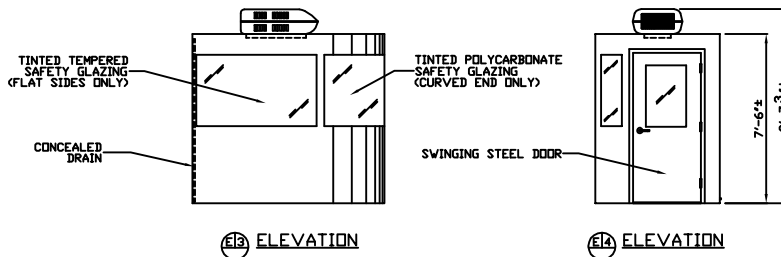
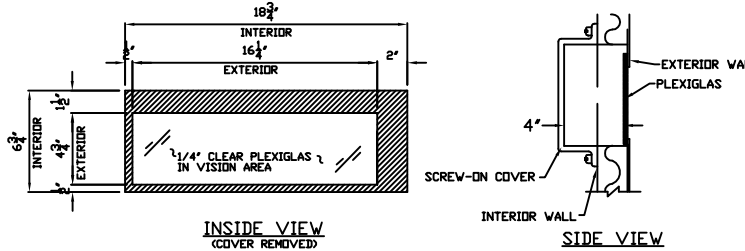


- a. 3" X 6" SLOT IN FLOOR FOR ELECTRIC SERVICE ENTRANCE TO C.B. PANEL ABOVE
- b. 3" X 6" SLOT IN FLOOR FOR FUTURE USE BY CUSTOMER
- c. 2" X 2" X 1/4" MIN. ANCHOR CLIP WITH 3/4" ANCHOR BOLT HOLE, 4-REQ'D. AS SHOWN. ANCHOR BOOTH AFTER FINAL LOCATION. ANCHOR BOLTS NOT INCLUDED
- d. OUTER EDGE OF BASE
- e. 1' X 2' RACEWAY 18" ABOVE FLOOR.



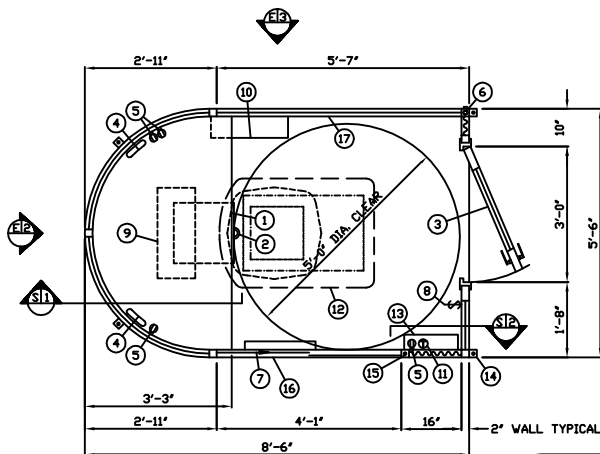
NOTE: PROVIDE 120/240V, 1Ø-3 WIRE SERVICE WITH GROUND. SERVICE ENTRANCE/ANCHOR BOLT LAYOUT



AMANO AGP-5900 FEE DISPLAY WINDOW DETAIL
THIS CONFIGURATION REQUIRES SWING ARM TO BE REMOVED
NO SCALE

1. COUNTER- 37" DEEP STAINLESS STEEL 32" ABOVE FLOOR.
2. PAINTED STORAGE DRAWER BENEATH COUNTER.
3. DOOR- 36" WIDE, SWINGING STEEL WITH WEATHER-STRIPPING, BALL BEARING BUTTS, SAFETY GLAZING, HYDRAULIC CLOSER, LEVER HANDLE LOCK, & HARDWARE.
4. 1-1/4" X 6" SLOT IN COUNTER FOR DROP CORDS, 2-REQ'D.
5. DUPLEX OUTLET- MOUNTED BELOW COUNTER, 4-REQ'D.
6. CONCEALED ROOF AND AIR CONDITIONER CONDENSATION DRAIN.
7. ROLLER CASHIER WINDOW MOUNTED 32" ABOVE FLOOR.
8. LIGHT SWITCH FOR INTERIOR LIGHT.
9. LIGHT- FLUORESCENT RECESSED LIGHT FIXTURE WITH LENS.
10. HEATER- 240V/5,600 WATT FAN FORCED WITH INTEGRAL THERMOSTAT CONTROL.
11. WALL MOUNTED THERMOSTAT CONTROL FOR ROOF TOP AIR CONDITIONER.
12. AIR CONDITIONER - 120V/13,500 BTU ROOF MOUNTED WITH WALL MOUNTED THERMOSTAT CONTROL.
13. C.B. PANEL- LOCKABLE 12 SPACE 120/240V, 1Ø-3 WIRE WITH GROUND BAR, 100 AMP MAIN BREAKER IS INCLUDED.
14. ANCHOR CLIP- 2" X 2" X 1/4" MIN. STEEL WELDED TO BASE AT GRADE WITH 3/4" ANCHOR BOLT HOLE. 4-REQ'D. ANCHOR BOOTH AFTER FINAL LOCATION. ANCHOR BOLTS NOT INCLUDED.
15. 3/4" RACEWAY FROM J-BOX AT C.B. PANEL THROUGH ROOF FOR CUSTOMER USE.
16. FEE DISPLAY WINDOW WITH 2" X 1" RACEWAY FROM FEE DISPLAY TO COUNTER.
17. 1' X 2' RACEWAY IN WALL 18" ABOVE FLOOR.

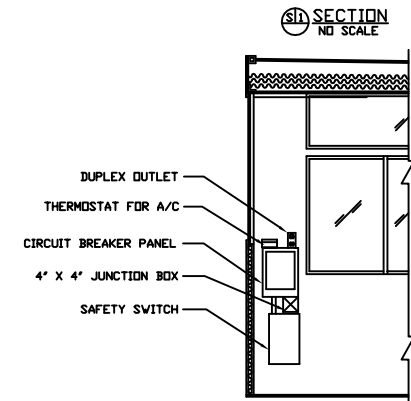
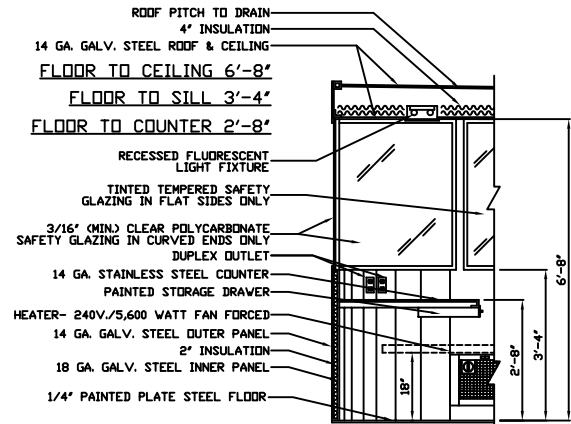
NOTE: PAR-KUT BOOTHS ARE OF SINGLE UNIT WELDED GALVANIZED STEEL CONSTRUCTION, FACTORY ASSEMBLED AND DELIVERED SET UP. FAILURE TO SECURELY ANCHOR BOOTH MAY RESULT IN OVERTURNING OF UNIT AND SERIOUS INJURY TO OCCUPANT.



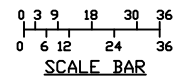
PLAN VIEW

DRAWING IS AS FABRICATED FOR RECORD PURPOSES ONLY

A.I.A. NOTE
BOOTH MUST BE HANDICAP ACCESSIBLE. THE FOUNDATION MAY BE RECESSED OR A 1/2" RAMP MUST BE PROVIDED SO THAT MAXIMUM CHANGE IN LEVEL FROM GRADE TO FINISH FLOOR DOES NOT EXCEED 1/4"



S1B SECTION
NO SCALE



NOTE: ELEVATIONS 2x1

NOTE: THIS PRINT AND DESIGN ARE THE PROPERTY OF PAR-KUT INTERNATIONAL, INC. IT MUST NOT BE REPRODUCED IN ANY MANNER, NEAR SHALL IT BE SUBMITTED TO OUTSIDE PARTIES FOR EXAMINATION WITHOUT OUR CONSENT. IT SHALL BE USED ONLY AS A MEANS OF REFERENCE TO WORK DESIGNED AND FURNISHED BY PAR-KUT. PAR-KUT RESERVES THE RIGHT TO MAKE CHANGES TO DESIGN FOR ENGINEERING PURPOSES WITHOUT NOTICE. REVISIONS MAY NOT BE NOTED.

PAR-KUT INTERNATIONAL, INC.
40961 Production Drive
Harrison Twp, Mich.
48045-1361
Ph. (610) 468-2947

DWG# 2K433-440 SHEET A-1

APCDA / STANDARD PARKING
BRADLEY INTERNATIONAL AIRPORT
HARTFORD, CT

A/E NOTES		
PAINT COLOR: (PLEASE SPECIFY COLOR)		
SCALE	DRAWN BY	REVISED
NITS	AJP	11-7-2014
DATE	SIZE	QTY
7-11-2000	5'-6" X 8'-6"	8
CHK'D BY:	SALES REPRESENTATIVE	
	BILL DUEMLING	