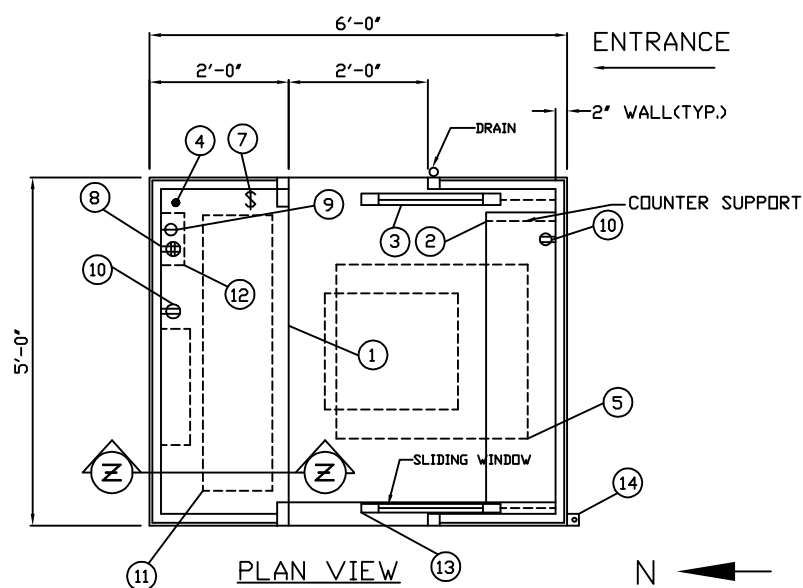
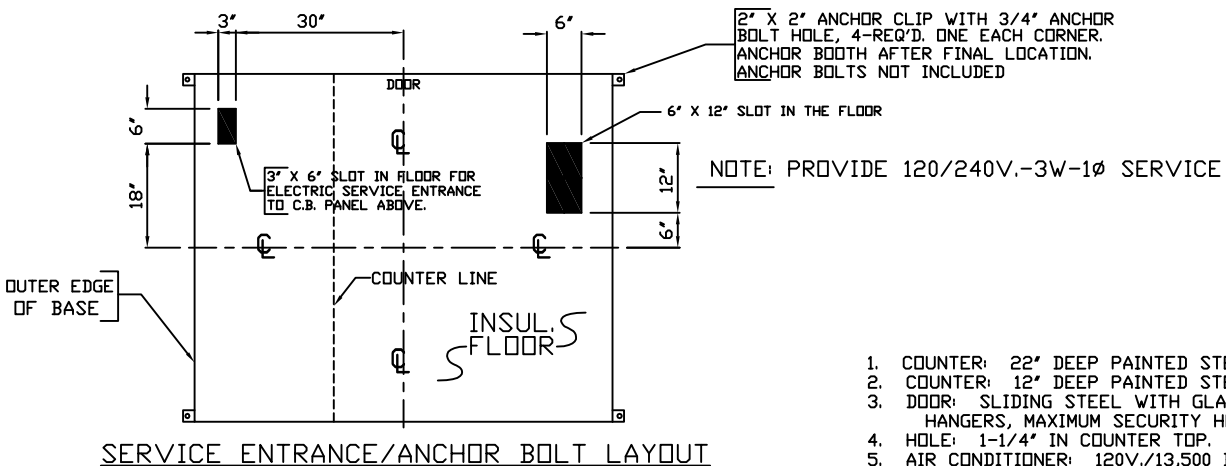
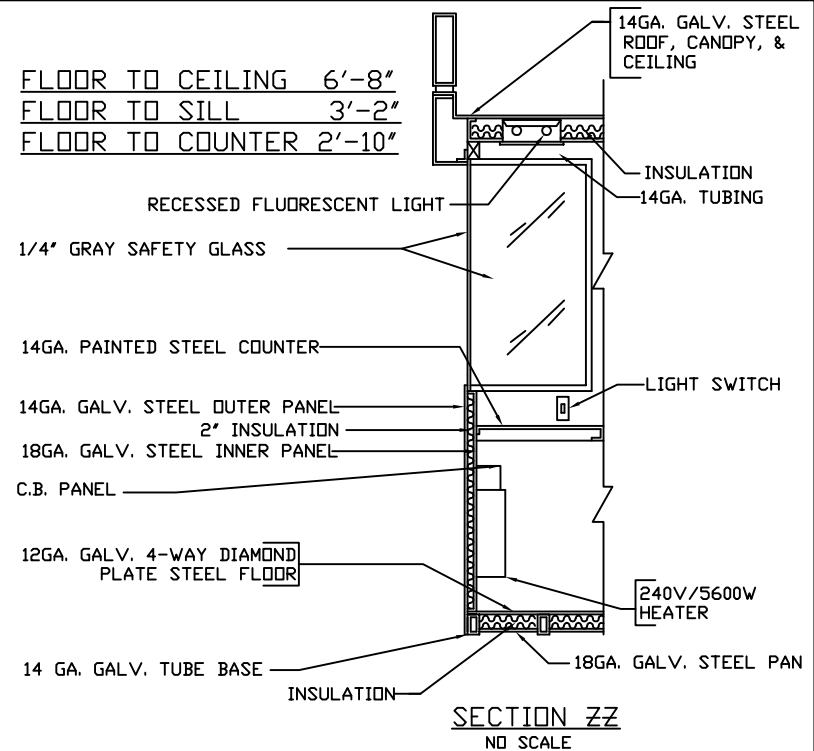


FLOOR TO CEILING 6'-8"
FLOOR TO SILL 3'-2"
FLOOR TO COUNTER 2'-10"



1. COUNTER: 22" DEEP PAINTED STEEL COUNTER 34" ABOVE FINISH FLOOR.
2. COUNTER: 12" DEEP PAINTED STEEL COUNTER 34" ABOVE FINISH FLOOR.
3. DOOR: SLIDING STEEL WITH GLAZING, HEAVY DUTY TRACK AND BALL BEARING HANGERS, MAXIMUM SECURITY HOOKBOLT DEADLOCK, WEATHERSTRIP AND HARDWARE.
4. HOLE: 1-1/4" IN COUNTER TOP.
5. AIR CONDITIONER: 120V./13,500 BTU ROOF MOUNTED AIR CONDITIONER WITH CEILING MOUNTED GRILL AND CONTROLS.
6. HEATER: 240V./5600W FAN FORCED WITH INTEGRAL THERMOSTAT.
7. SWITCH: LIGHTS.
8. QUAD OUTLET: QUAD RECEPTACLE, MOUNTED UNDER COUNTER.
9. IG OUTLET: ISOLATED GROUND, SURGE PROTECTED DUPLEX RECEPTACLE, MOUNTED UNDER COUNTER.
10. DUPLEX OUTLET: ABOVE COUNTER, 2-REQ'D., 1 OVER EACH COUNTER.
11. LIGHT: RECESSED WITH LAMPS AND ACRYLIC LENS.
12. CIRCUIT BREAKER BOX: 120/240V. SINGLE PHASE WITH NECESSARY BREAKERS.
13. CASHIER WINDOW: TOP HUNG WITH LOCK.
14. 2' X 2' ANCHOR CLIP, 4-REQ'D., 1-EACH CORNER. ANCHOR BOOTH AFTER FINAL LOCATION. ANCHOR BOLTS NOT PROVIDED.

NOTE: PAR-KUT BOOTHS ARE OF SINGLE UNIT WELDED GALVANIZED STEEL CONSTRUCTION, FACTORY ASSEMBLED AND DELIVERED SET UP. FAILURE TO SECURELY ANCHOR BOOTH MAY RESULT IN OVERTURNING OF UNIT AND SERIOUS INJURY TO OCCUPANT.

- A. GLAZING: 1/4" GRAY TEMPERED SAFETY GLASS. BUTT GLAZING TO BE SEALED WITH STRUCTURAL GRADE SILICONE.
- B. TRIM: ALUMINUM GLAZING STOPS PAINTED TO MATCH BOOTH.
- C. PAINT: BOOTH TO BE PAINTED WITH HIGH SOLIDS EPOXY PRIMER AND FINISH PAINTED WITH INDUSTRIAL ENAMEL. (PLEASE PROVIDE 'CAMDEN GREEN' COLOR CHIP).
- D. BASE: INSULATED WITH RIGID FIBERGLASS.
- E. OVERHANG: 3" CANOPY ALL SIDES.
- F. FLOOR: 4-WAY GALVANIZED STEEL TREADPLATE.
- G. SCOPE: ASSEMBLED MATERIAL ONLY. NO ON SITE WORK BY PAR-KUT

NOTE: THIS PRINT AND DESIGN IS THE PROPERTY OF PAR-KUT INTERNATIONAL, INC. IT MUST NOT BE REPRODUCED IN ANY MANNER, NOR SHALL IT BE SUBMITTED TO OUTSIDE PARTIES FOR EXAMINATION WITHOUT OUR CONSENT. IT SHALL BE USED ONLY AS A MEANS OF REFERENCE TO WORK DESIGNED AND FURNISHED BY PAR-KUT.

PAR-KUT INTERNATIONAL, INC.
40861 Production Drive
Harrison Twp, Mich. 48045-1351
810-468-2947

DWG# 9425

ORIOLE PARK - LOT A
CAMDEN YARD
BALTIMORE, MD.

RE: CENTRAL PARKING CO.		
SCALE	DRAWN BY	REVISED
NDNE	JRC	
DATE	SIZE	QTY
1-6-94	5' X 6'	1

A/E NOTES	
ENAMEL COLOR:	MATCH 'CAMDEN GREEN' #