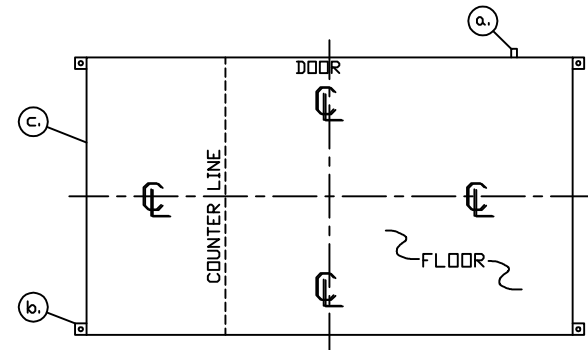
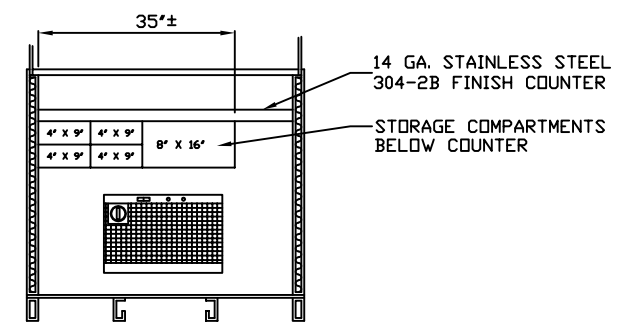


- a. 3" X 6" SLOT IN FLOOR FOR ELECTRIC SERVICE ENTRANCE TO C.B. PANEL ABOVE
- b. 2" X 2" X 1/4" MIN. ANCHOR CLIP WITH 3/4" ANCHOR BOLT HOLE, 4-REQ'D. ONE EACH CORNER. ANCHOR BOOTH AFTER FINAL LOCATION. ANCHOR BOLTS NOT INCLUDED
- c. OUTER EDGE OF BASE



NOTE: PROVIDE 120/208V. 1Ø-3 WIRE SERVICE WITH GROUND.
SERVICE ENTRANCE/ANCHOR BOLT LAYOUT

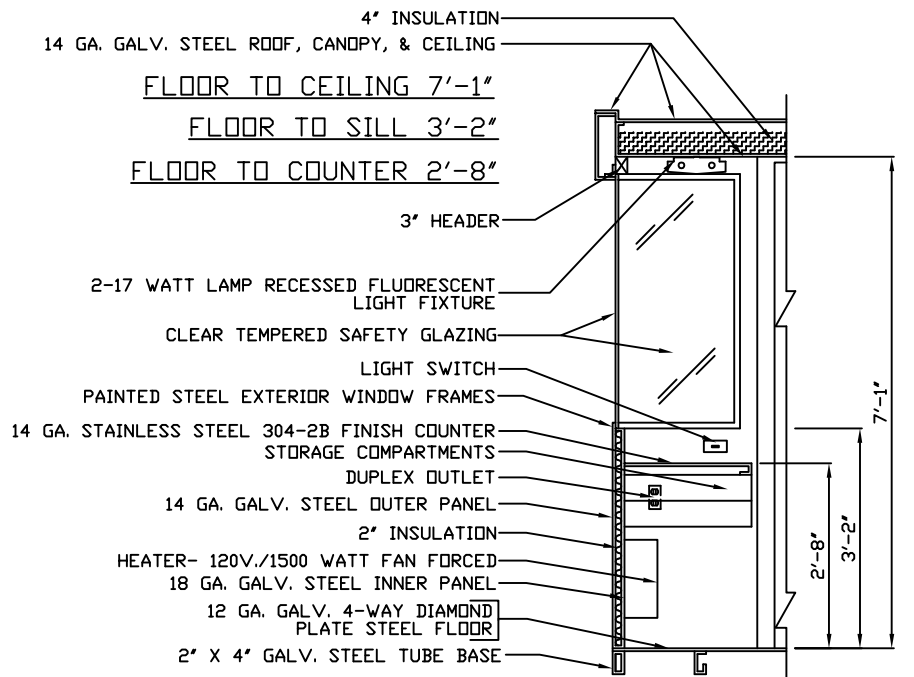


STORAGE COMPARTMENT
DETAIL

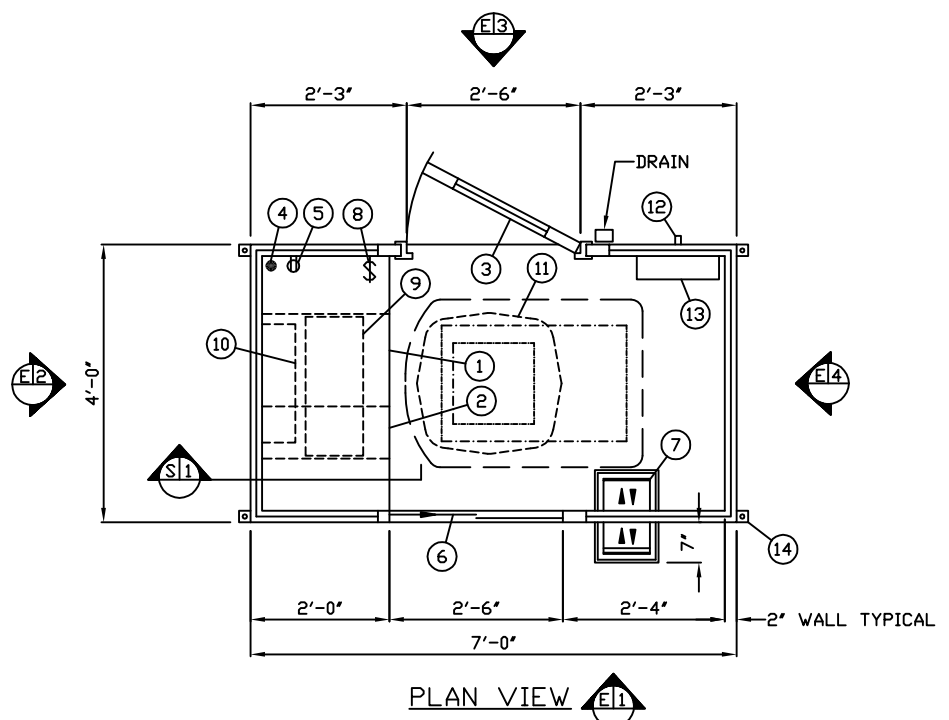
1. COUNTER- 22" DEEP STAINLESS STEEL 304-2B FINISH 32" ABOVE FLOOR.
2. STORAGE COMPARTMENTS - (4) 4" X 9" AND ONE 8" X 16".
3. DOOR- 30" WIDE, SWINGING STEEL WITH WEATHER-STRIPPING, BALL BEARING BUTTS, SAFETY GLAZING, HYDRAULIC CLOSER, KEY IN KNOB LOCK, & HARDWARE.
4. 2" HOLE IN COUNTER FOR DROP CORDS TO OUTLET.
5. DUPLEX OUTLET- MOUNTED BELOW COUNTER.
6. ROLLER CASHIER WINDOW, SILL MOUNTED 32" ABOVE FLOOR.
7. SHURESAFE DEAL TRAY WITH PAINTED STEEL SHELF MOUNTED 32" ABOVE FLOOR.
8. LIGHT SWITCH MOUNTED ABOVE COUNTER FOR INTERIOR LIGHT.
9. LIGHT- 2-17 WATT LAMP FLUORESCENT LIGHT FIXTURE WITH LENS.
10. HEATER- 208V./4,200 WATT FAN FORCED WITH INTEGRAL THERMOSTAT CONTROL.
11. AIR CONDITIONER 120V./13,500 BTU ROOF MOUNTED WITH INTEGRAL THERMOSTAT CONTROL.
12. 1" NIPPLE THROUGH WALL FOR ELECTRICAL CONNECTION TO C.B. PANEL.
13. C.B. PANEL- 12 SPACE 120/208V. 1Ø-3 WIRE WITH GROUND BAR. 100 AMP MAIN BREAKER IS INCLUDED.
14. ANCHOR CLIP- 2" X 2" X 1/4" MIN. STEEL WELDED TO BASE AT GRADE WITH 3/4" ANCHOR BOLT HOLE. 4-REQ'D. ANCHOR BOOTH AFTER FINAL LOCATION. ANCHOR BOLTS NOT INCLUDED.

NOTE: PAR-KUT BOOTHS ARE OF SINGLE UNIT WELDED GALVANIZED STEEL CONSTRUCTION, FACTORY ASSEMBLED AND DELIVERED SET UP. FAILURE TO SECURELY ANCHOR BOOTH MAY RESULT IN OVERTURNING OF UNIT AND SERIOUS INJURY TO OCCUPANT.

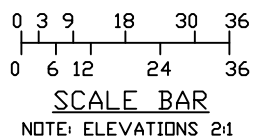
- A. GLAZING TO BE 1/4" CLEAR TEMPERED SAFETY GLAZING WITH PAINTED STEEL WINDOW FRAMES AND 3/4" ALUMINUM INTERIOR GLAZING STOPS.
- B. PAINT- A RUST INHIBITIVE PRIMER WITH AN INDUSTRIAL FINISH.
- C. ELECTRICAL- ALL WIRING BY PAR-KUT TO BE #12(MIN) STRANDED COPPER, THHN ENCLOSED IN 1/2"(MIN) E.M.T. PER NATIONAL ELECTRIC CODE. FITTINGS, FIXTURES & DEVICES ARE U.L. LABELED. ALL WIRING TO TERMINATE AT C.B. PANEL. ALL CIRCUITS HAVE GREEN GROUND WIRE.
- D. BOOTH WILL HAVE A 3" CANOPY OVERHANG ON ALL SIDES.
- E. LIFTING RING(S) ARE PROVIDED IN ROOF.
- F. NO ON SITE WORK BY PAR-KUT.



S1 SECTION
NO SCALE



PLAN VIEW
E1



GENERAL NOTES		
PAINT COLOR: (PLEASE SPECIFY COLOR)		

NOTE: THIS PRINT AND DESIGN ARE THE PROPERTY OF PAR-KUT INTERNATIONAL, INC. IT MUST NOT BE REPRODUCED IN ANY MANNER, NOR SHALL IT BE SUBMITTED TO OUTSIDE PARTIES FOR EXAMINATION WITHOUT OUR CONSENT. IT SHALL BE USED ONLY AS A MEANS OF REFERENCE TO WORK DESIGNED AND FURNISHED BY PAR-KUT. PAR-KUT RESERVES THE RIGHT TO MAKE CHANGES TO DESIGN FOR ENGINEERING PURPOSES WITHOUT NOTICE. REVISIONS MAY NOT BE NOTED.

PAR-KUT INTERNATIONAL, INC.
40961 Production Drive
Harrison Twp, Mich.
48045-1551
PH. (586) 468-2947

DWG# PAR-004 SHEET A-1

4' X 7' PARVUE		
SCALE	DRAWN BY	REVISED
NTS	NSG	
DATE	SIZE	QTY
	4' X 7'	
CHK'D BY:	SALES REPRESENTATIVE	