

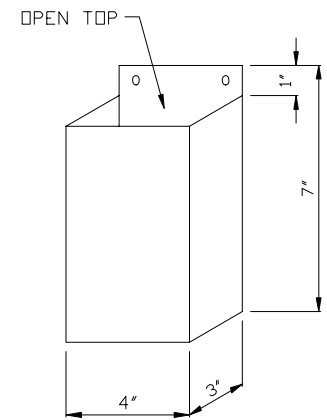
NOTE: PROVIDE 120/240V. 1Ø-3W. SERVICE WITH GROUND.

ANCHOR BOLT LAYOUT

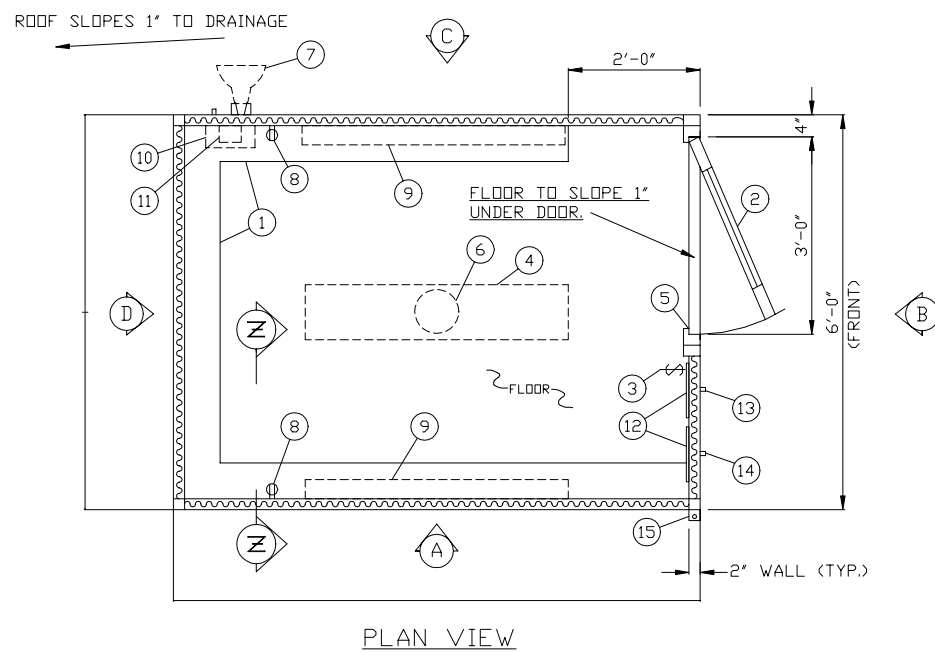
- COUNTER- 6-1/2" DEEP STEEL OPTIONAL "U" SHAPED, 28" ABOVE FLOOR.
- DOOR- 36" X 84" SWINGING GALV. STEEL, WIRE GLASS SAFETY GLAZING, GALV. PUSH-PULL SET, STEEL INTERIOR KICK PLATE (FASTENED WITH GALV. STEEL RIVETS), SEAL TABS, GALV. STEEL BALL BEARING BUTTS, HYDRAULIC CLOSER, AND EXTERIOR DRIP CAP. NO LOCK PROVIDED.
- LIGHT SWITCH.
- INTERIOR LIGHT- 2-34W. LAMP FLUORESCENT LIGHT FIXTURE WITH ACRYLIC LENS.
- SWITCH FOR ALARM- MOUNTED ON DOOR, WIRED TO TIMING RELAY WITH 60 SECOND, ADJUSTABLE ON DELAY FOR WARNING SYSTEM.
- EXTERIOR LIGHT- HEAVY DUTY ROTATING WARNING LIGHT FIXTURE, MOUNTED ON ROOF. MCMASTER-CARR #8332T62.
- ALARM SIREN- TRI-TONE (RISE-FALL) WARNING ALARM MOUNTED ON EXT. WALL. MCMASTER-CARR # 6476T11.
- DUPLEX OUTLET- 110V. MOUNTED 14" ABOVE FLOOR. 2-REQ'D
- HEATER- 240V./1000W. BASEBOARD MOUNT WITH INTEGRAL THERMOSTAT CONTROL. MOUNTED 10" ABOVE FLOOR. 2-REQ'D BERKO # MBB4-1024-M.
- CIRCUIT BREAKER PANEL- 120/240V. 1Ø-3W. WITH GROUND. MAIN BREAKER NOT INCLUDED. 3/4" NIPPLE THRU WALL PROVIDED FOR INCOMING SERVICE. PANEL MOUNTED 66" ABOVE FLOOR. SQUARE D # Q08-16L100S.
- STORAGE BOX- 3"D X 4"W X 7"H MOUNTED ON INT. WALL. 3-REQ'D, (2) SHIP LOOSE. SEE DETAIL.
- PHONE & INTERCOM MOUNTING BOARD- 3/4" X 10" X 12". 2-REQ'D
- J-BOX WITH RACEWAY TO J-BOX ABOVE FOR INTERCOM. LOCATED ABOVE MOUNTING BOARD. 3/4" NIPPLE THRU WALL PROVIDED FOR SERVICE.
- J-BOX WITH RACEWAY TO J-BOX ABOVE FOR PHONE. LOCATED ABOVE MOUNTING BOARD. 3/4" NIPPLE THRU WALL PROVIDED FOR SERVICE.
- ANCHOR CLIP- 2" X 2" STEEL WELDED TO BASE AT GRADE WITH 3/4" BOLT HOLE. 4-REQ'D, ONE EACH CORNER. ANCHOR BOOTH AFTER FINAL LOCATION. ANCHOR BOLTS NOT INCLUDED.

NOTE: PAR-KUT BOOTHS ARE OF SINGLE UNIT WELDED GALVANIZED STEEL CONSTRUCTION, FACTORY ASSEMBLED AND DELIVERED SET UP. FAILURE TO SECURELY ANCHOR BOOTH MAY RESULT IN OVERTURNING OF UNIT AND SERIOUS INJURY TO OCCUPANT.

- BOOTH TO BE PAINTED WITH A RUST INHIBITIVE PRIMER AND FINISHED WITH AN OPTIONAL DUPONT IMRON POLYURETHANE ENAMEL.
- ALL WIRING BY PAR-KUT TO BE #12(MIN) STRANDED THHN ENCLOSED IN E.M.T. PER NATIONAL ELECTRIC CODE. ALL FITTINGS, FIXTURES & DEVICES ARE U.L. APPROVED. ALL WIRING TO TERMINATE AT C.B. PANEL. ALL CIRCUITS HAVE GREEN GROUND WIRE.
- FLOOR AND WALLS HAVE GLASS FIBER INSULATION. ROOF FULLY INSULATED.
- OPTIONAL BLACK VINYL APPLIQUE LETTERS READING "GAS RESCUE EQUIPMENT" WILL BE APPLIED ON ALL FOUR WALLS.
- EXTERIOR OF BOOTH, DOOR, DOOR HINGES AND HANDLE WILL BE OPTIONAL GALVANIZED STEEL.
- ROOF SLOPES 1" TO REAR OF BOOTH FOR WATER DRAINAGE.
- FOUR LIFTING RINGS PROVIDED IN ROOF.
- NO PHONE, INTERCOM OR ON SITE WORK BY PAR-KUT.



OPTIONAL STORAGE BOX DETAIL
NO SCALE



NOTE: THIS PRINT AND DESIGN ARE THE PROPERTY OF PAR-KUT INTERNATIONAL, INC. IT MUST NOT BE REPRODUCED IN ANY MANNER, NOR SHALL IT BE SUBMITTED TO OUTSIDE PARTIES FOR EXAMINATION WITHOUT OUR CONSENT. IT SHALL BE USED ONLY AS A MEANS OF REFERENCE TO WORK DESIGNED AND FURNISHED BY PAR-KUT. PAR-KUT RESERVES THE RIGHT TO MAKE CHANGES TO DESIGN FOR ENGINEERING PURPOSES WITHOUT NOTICE.

PAR-KUT INTERNATIONAL, INC.
40961 PRODUCTION DRIVE
HARRISON TWP, MICH.
48045-1351
PH. (810) 468-2947

DWG# GAS

#87-GRES

A/E NOTES		
PAINT COLOR:		
SCALE	DRAWN BY	REVISED
NTS	JWH / DLT	
DATE	SIZE	QTY
7-25-2000	6' X 8'	
CHK'D BY:	REVISION(S) CHK'D BY:	