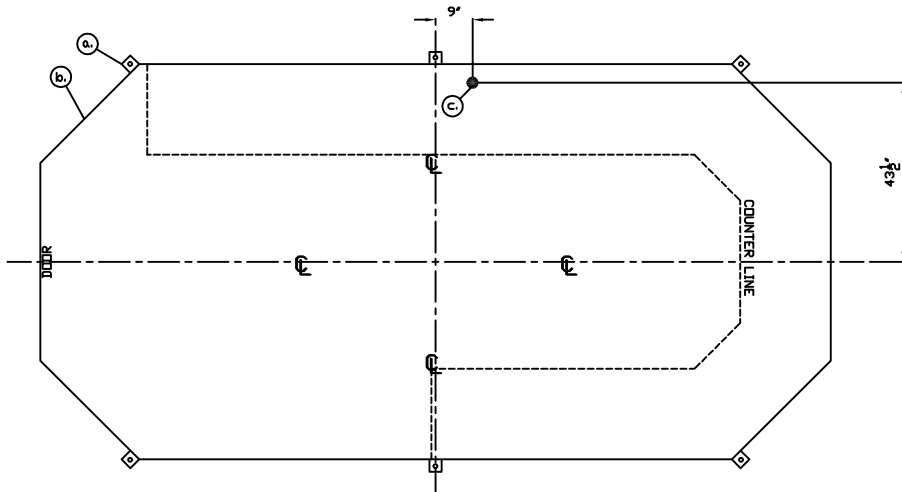
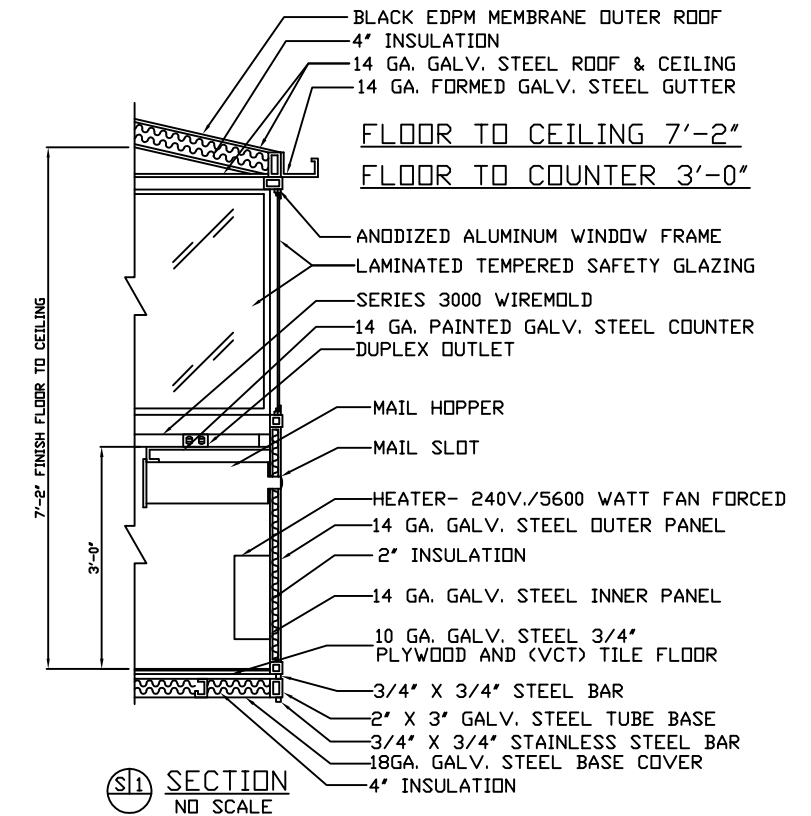
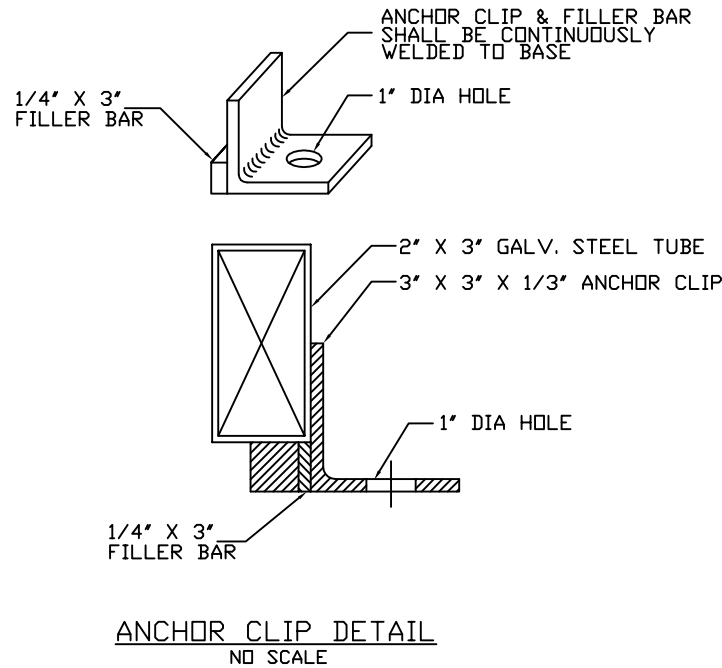


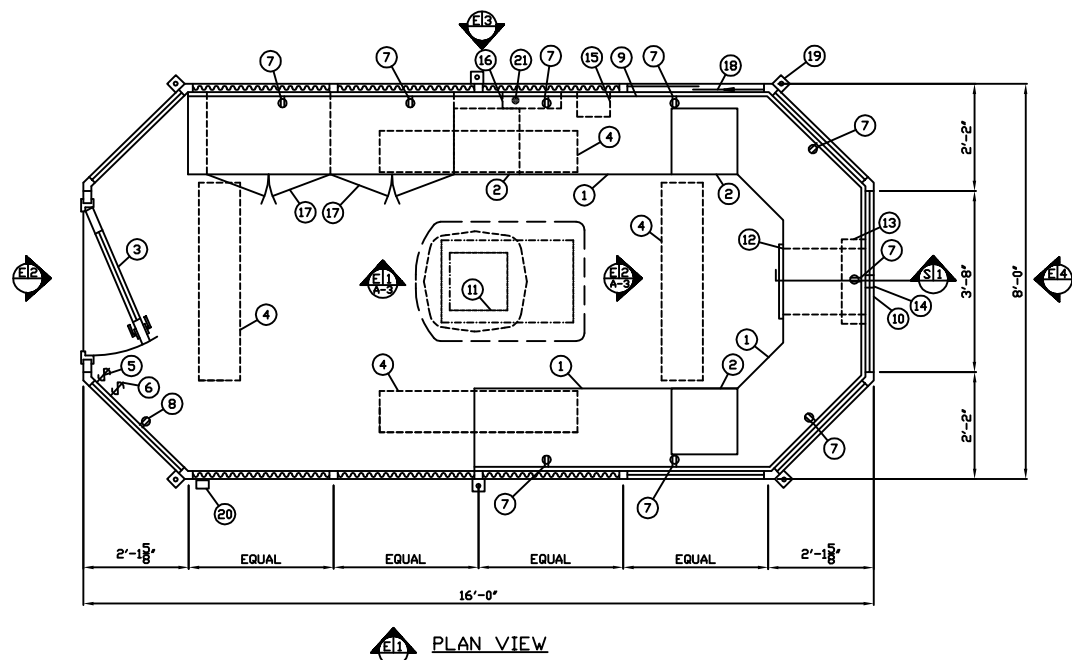
- a. 3" X 3" X 1/4" MIN. ANCHOR CLIP WITH 1" ANCHOR BOLT HOLE, 6-REQ'D. ONE EACH CORNER. ANCHOR BOLTS AFTER FINAL LOCATION. ANCHOR BOLTS NOT INCLUDED.
- b. OUTER EDGE OF BASE
- c. 3" DIA. HOLE IN FLOOR



NOTE: PROVIDE 120/208V, 1Ø-3 WIRE SERVICE WITH GROUND. SERVICE ENTRANCE/ANCHOR BOLT LAYOUT



1. WRAP AROUND COUNTER- 20" DEEP PAINTED 14 GA. GALVANIZED STEEL 36" ABOVE FINISH FLOOR. WELDED AT WALL PANELS USING 3/4" WELD EVERY 8".
2. 14 GA. 16" X 15" X 4" PAINTED STORAGE DRAWER WITH GRANT BALL BEARING DRAWER SLIDES WITH FLUSH PULL.
3. DOOR- 36" WIDE, SWINGING STEEL WITH WEATHER-STRIPPING, BALL BEARING BUTTS WITH NON-REMOVABLE PINS, SAFETY GLAZING, LCN HYDRAULIC CLOSER, THRESHOLD SADDLE, BEST MORTISE LOCK, & HARDWARE.
4. LIGHT- FLUORESCENT LIGHT FIXTURE WITH DIMMING BALLAST AND LENS, 4-REQ'D.
5. DIMMING SWITCH FOR INTERIOR LIGHTS.
6. DIMMING SWITCH FOR INTERIOR LIGHTS.
7. DUPLEX OUTLET- 2 POLE, 3 WIRE, 15 AMP GROUNDING TYPE IN WIRE MOLD- MOUNTED ABOVE COUNTER, 9-REQ'D.
8. DUPLEX OUTLET- 2 POLE, 3 WIRE, 15 AMP GROUNDING TYPE MOUNTED 18" ABOVE FINISH FLOOR.
9. WIRE MOLD- MOUNTED ABOVE COUNTER.
10. WEATHER TIGHT MAIL SLOT- IVES #620 - 13" X 3-9/16" WITH CHUTE TO MAIL HOPPER #12.
11. AIR CONDITIONER- 120V./13,500 BTU ROOF TOP WITH INTEGRAL THERMOSTAT CONTROL.
12. 14 GA. MAIL HOPPER WITH GRANT BALL BEARING DRAWER SLIDES AND FLUSH PULL ON DRAWER.
13. HEATER- 208V./4,200 WATT FAN FORCED WITH INTEGRAL THERMOSTAT CONTROL.
14. VOICE SPEAK TUBE.
15. 8" X 8" ELECTRIC BOX WITH LOCKING DOOR FOR ROOF AIR CONDITIONER UNIT WIRE TERMINATION.
16. C.B. PANEL- 12 SPACE 120/208V, 1Ø-3 WIRE WITH GROUND BAR. 100 AMP MAIN BREAKER IS INCLUDED.
17. 14 GA. STEEL CABINET 30" WIDE X 34" HIGH X 18" DEEP WITH PAINTED 14 GA. STEEL ADJUSTABLE SHELF, T-HANDLE PAWL LATCH, CABINET TO BE WELDED IN PLACE.
18. LOCKING SLIDING CASHIER WINDOW.
19. ANCHOR CLIP- 3" X 3" X 1/4" MIN. STEEL WELDED TO BASE AT GRADE WITH 1" ANCHOR BOLT HOLE. 6-REQ'D. ANCHOR BOOTH AFTER FINAL LOCATION. ANCHOR BOLTS NOT INCLUDED.
20. DRAIN.
21. 2" KNOCKOUT IN COUNTER.



NOTE: PAR-KUT BOOTHS ARE OF SINGLE UNIT WELDED GALVANIZED STEEL CONSTRUCTION, FACTORY ASSEMBLED AND DELIVERED SET UP. FAILURE TO SECURELY ANCHOR BOOTH MAY RESULT IN OVERTURNING OF UNIT AND SERIOUS INJURY TO OCCUPANT.

- A. GLAZING TO BE LAMINATED TEMPERED SAFETY GLAZING SET IN CLEAR ANODIZED ALUMINUM FINISH WINDOW FRAMES. REFER TO SHEET DET-2
- B. PAINT- A RUST INHIBITIVE PRIMER WITH AN INDUSTRIAL FINISH.
- C. ELECTRICAL- ALL WIRING BY PAR-KUT TO BE #12(MIN) STRANDED COPPER, XHHW ENCLOSED IN 3/4"(MIN) E.M.T. PER NATIONAL ELECTRIC CODE. FITTINGS, FIXTURES & DEVICES ARE U.L. LABELED. ALL WIRING TO TERMINATE AT C.B. PANEL. ALL CIRCUITS HAVE GREEN GROUND WIRE.
- D. BOOTH WILL NOT HAVE A CANOPY OVERHANG ON ANY SIDES.
- E. 4 REMOVABLE LIFTING RINGS ARE PROVIDED IN ROOF.
- F. FIXTURES ARE SCREWED TO WALL & CEILING PANELS.
- G. NO ON SITE WORK BY PAR-KUT.

DESIGN LOADS	
FLOOR LOAD:	50 PSF
WIND LOAD:	20 PSF
SNOW LOAD:	30 PSF

13120-001-001-REV 1

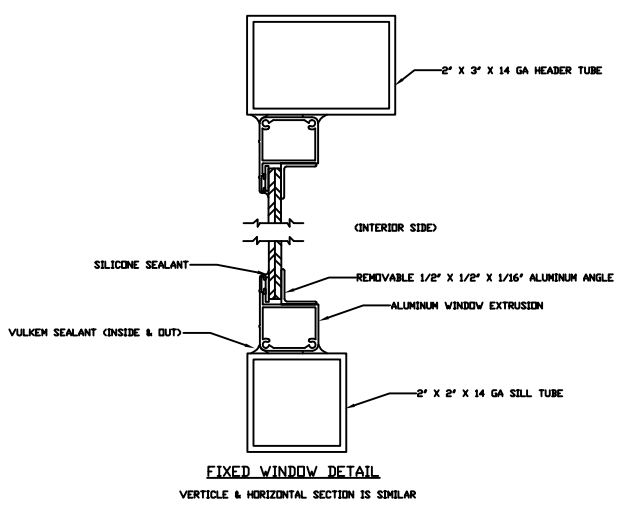
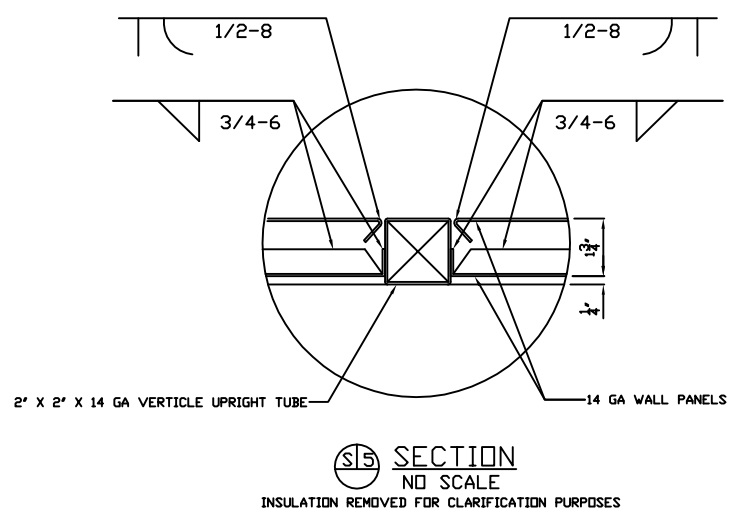
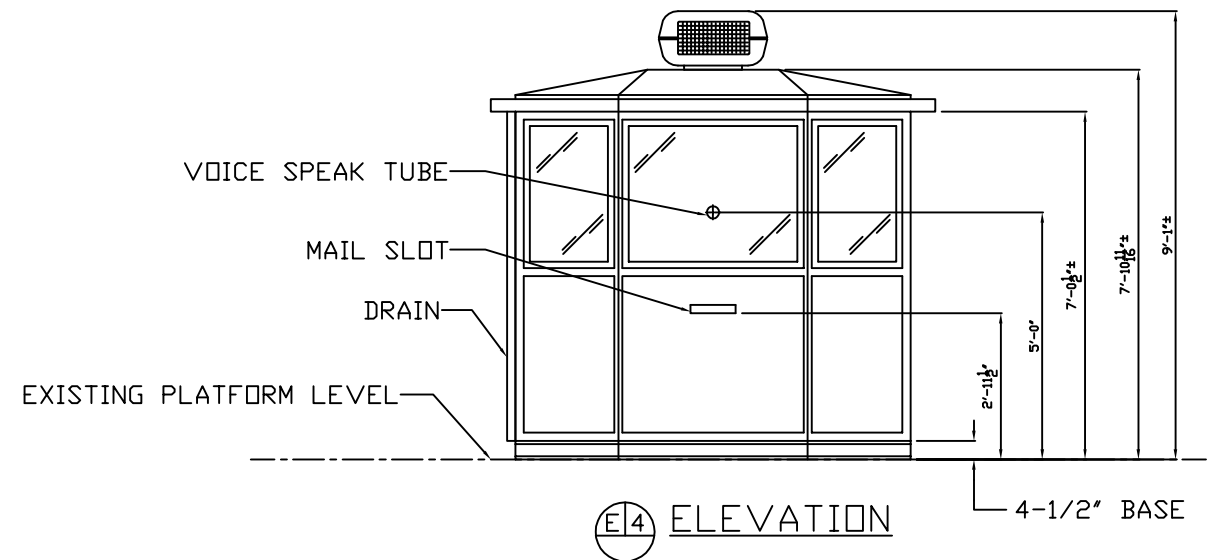
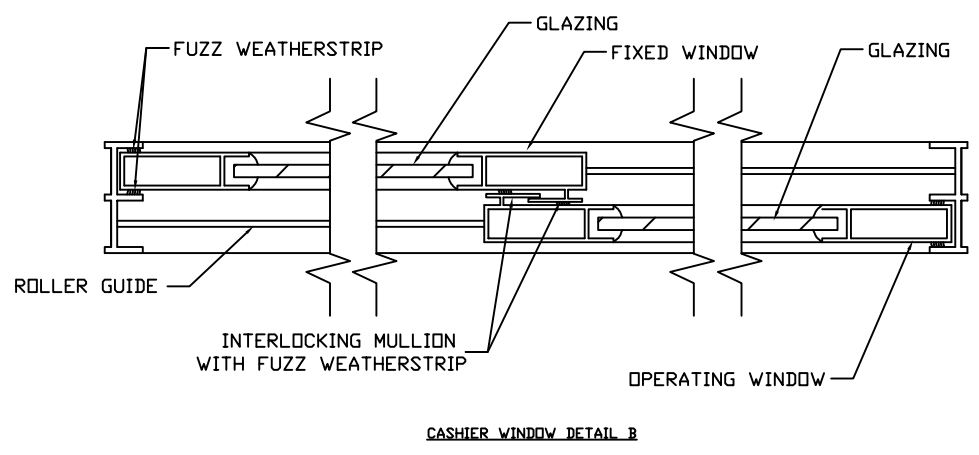
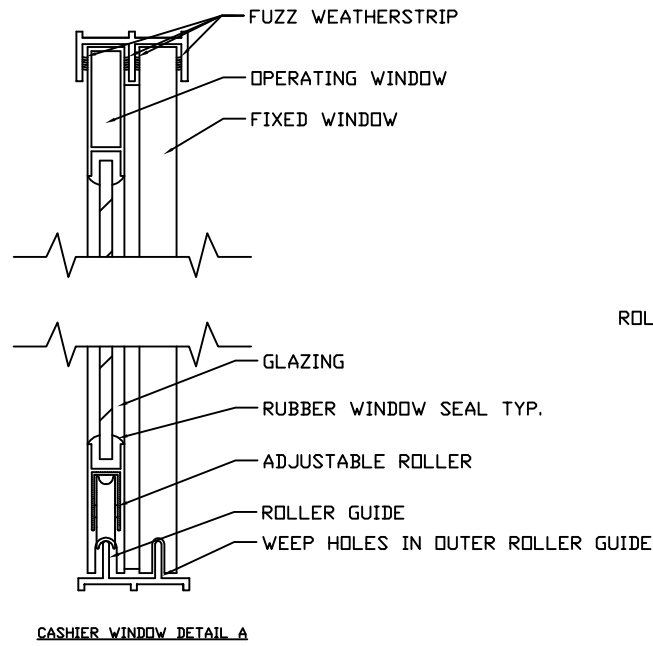
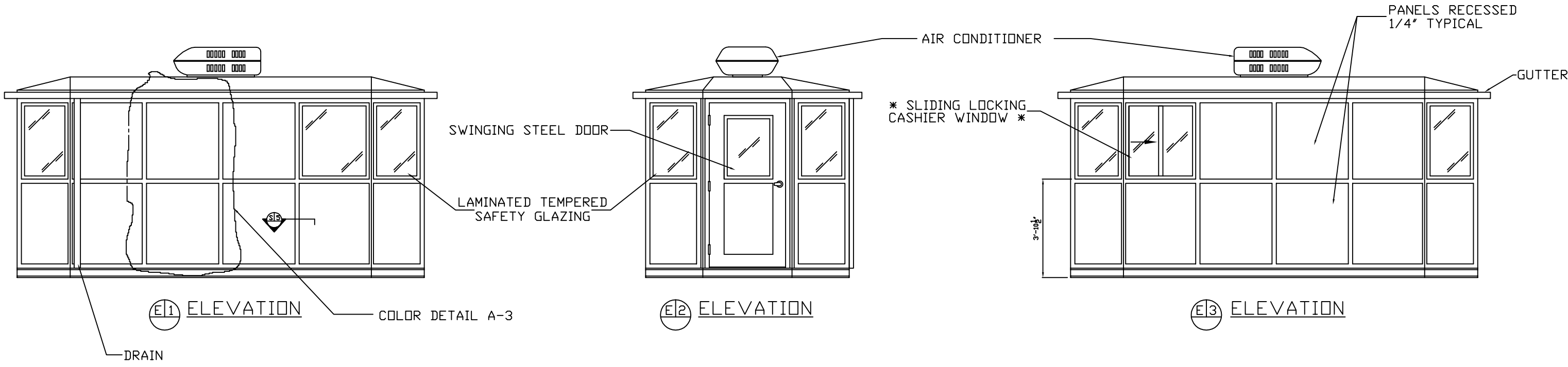
NOTE: THIS PRINT AND DESIGN ARE THE PROPERTY OF PAR-KUT INTERNATIONAL, INC. IT MUST NOT BE REPRODUCED IN ANY MANNER, NOR SHALL IT BE SUBMITTED TO OUTSIDE PARTIES FOR EXAMINATION WITHOUT OUR CONSENT. IT SHALL BE USED ONLY AS A MEANS OF REFERENCE TO WORK DESIGNED AND FURNISHED BY PAR-KUT. PAR-KUT RESERVES THE RIGHT TO MAKE CHANGES TO DESIGN FOR ENGINEERING PURPOSES WITHOUT NOTICE. REVISIONS MAY NOT BE NOTED.

PAR-KUT INTERNATIONAL, INC.
40961 Production Drive
Harrison Twp, Mich.
48045-1351
PH. (810) 468-2947



DWG# 01-179-81 SHEET A-1
AIRTRAIN TERMINAL AT JAMAICA STATION
PERINI/TUTOR-SALIBA JV
JAMAICA, NY

INFORMATION BOOTH		
SCALE	DRAWN BY	REVISED
1/4" = 1'	DLT	11-7-2014
DATE	SIZE	QTY
3-15-2001	8' X 16'	3
CHK'D BY:	SALES REPRESENTATIVE	
	MAL NEWCOMB	



13120-001-002-REV 1

NOTE: THIS PRINT AND DESIGN ARE THE PROPERTY OF PAR-KUT INTERNATIONAL, INC. IT MUST NOT BE REPRODUCED IN ANY MANNER, NOR SHALL IT BE SUBMITTED TO OUTSIDE PARTIES FOR EXAMINATION WITHOUT OUR CONSENT. IT SHALL BE USED ONLY AS A MEANS OF REFERENCE TO WORK DESIGNED AND FURNISHED BY PAR-KUT. PAR-KUT RESERVES THE RIGHT TO MAKE CHANGES TO DESIGN FOR ENGINEERING PURPOSES WITHOUT NOTICE. REVISIONS MAY NOT BE NOTED.

PAR-KUT INTERNATIONAL, INC.
40961 Production Drive
Harrison Twp, Mich.
48045-1351
PH. (810) 468-2947

DWG# 01-179-81 SHEET A-2

AIRTRAIN TERMINAL AT JAMAICA STATION
PERINI/TUTOR-SALIBA JV
JAMAICA, NY

INFORMATION BOOTH

SCALE 1/4" = 1'	DRAWN BY DLT	REVISED 11-7-2014
DATE 3-15-2001	SIZE 8' X 16'	QTY 3
CHK'D BY:	SALES REPRESENTATIVE MAL NEWCOMB	