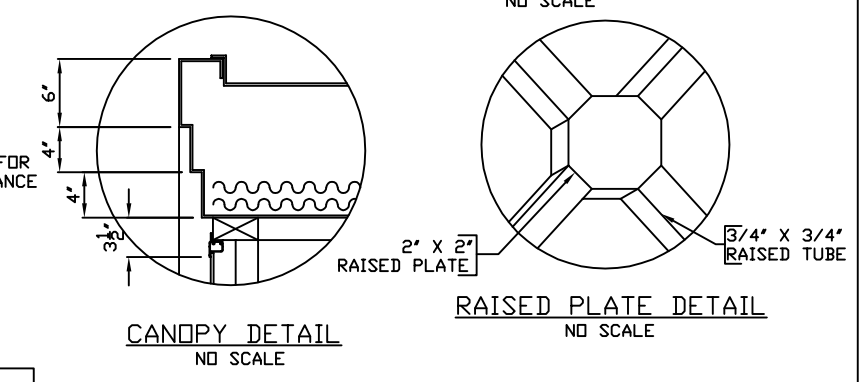
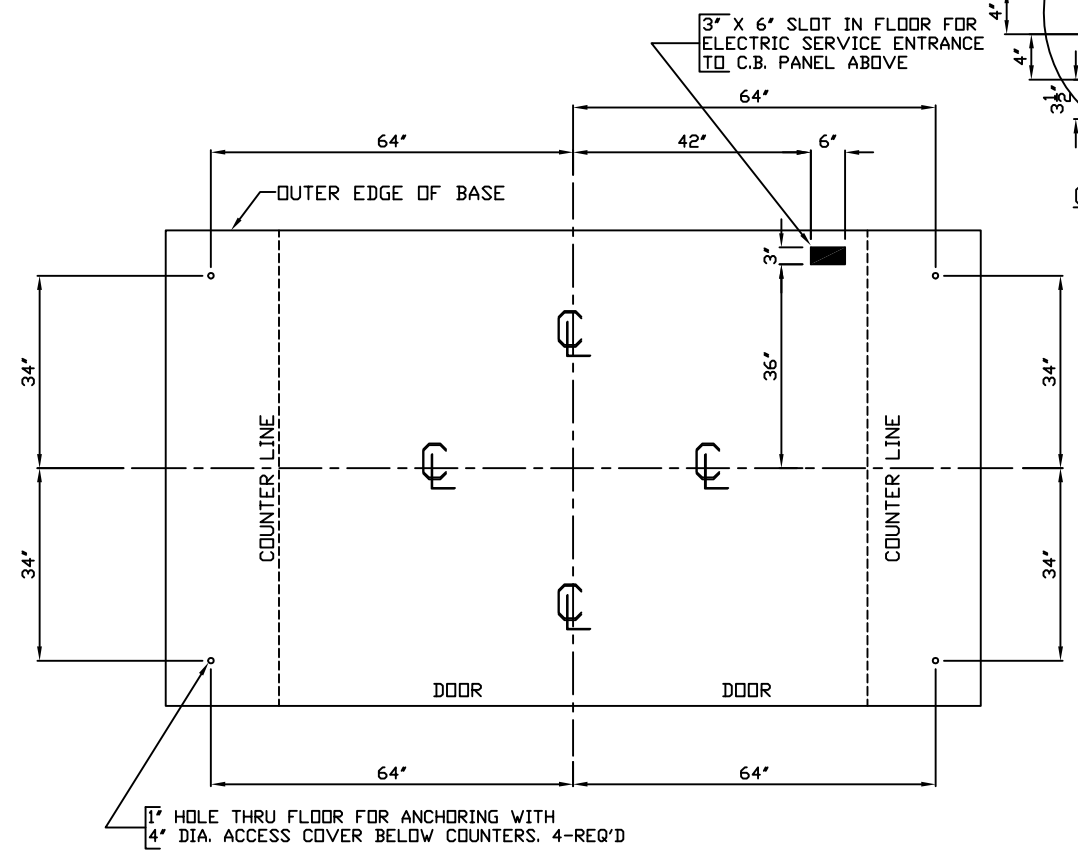
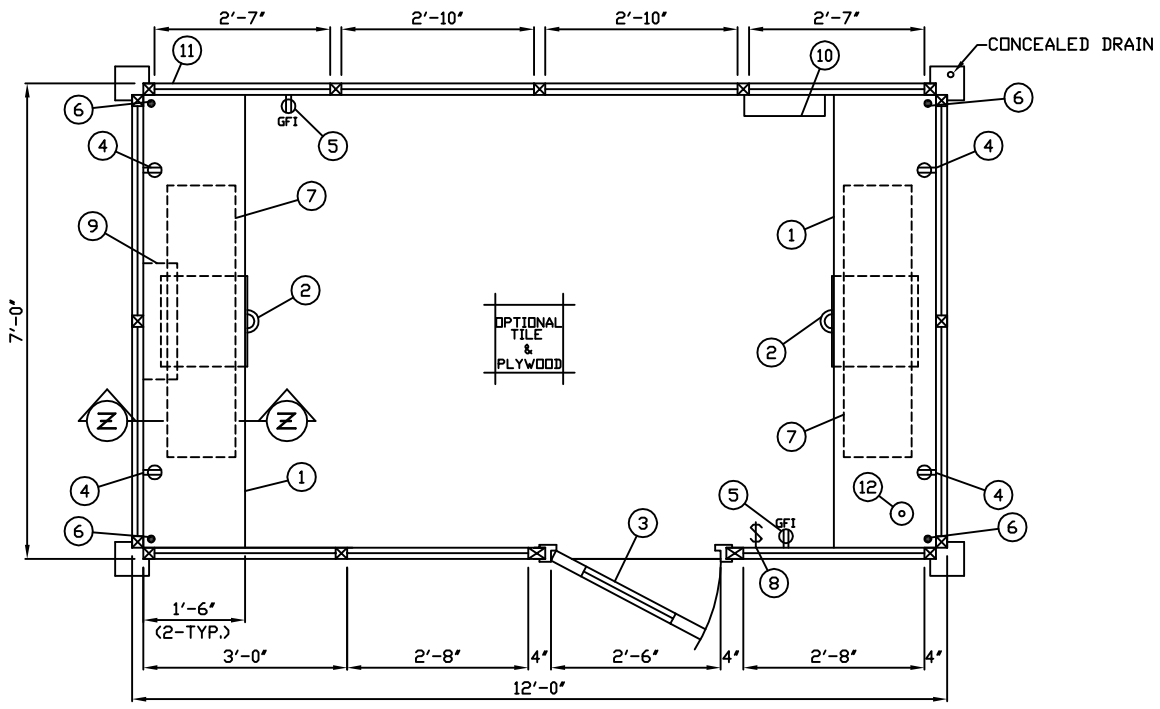


1. COUNTER- 18\"/>
- 2. STORAGE DRAWER- MOUNTED BELOW COUNTER, 1-REQ'D REAR OPTIONAL.
- 3. DOOR- 30\"/>
- 4. DUPLEX OUTLET- 110V. MOUNTED BELOW COUNTER, 1-REQ'D ADDITIONAL OPTIONAL.
- 5. OPTIONAL GROUND FAULT INTERRUPT DUPLEX OUTLET- 110V. 2-REQ'D
- 6. 1-1/4\"/>
- 7. LIGHT - FLUORESCENT LIGHT FIXTURE WITH LENS, 1-REQ'D ADDITIONAL OPTIONAL.
- 8. LIGHT SWITCH.
- 9. HEATER- 240V./4200W. FAN FORCED WITH INTEGRAL THERMOSTAT CONTROL.
- 10. C.B. PANEL- 120/240V. 1Ø-3Ø. 100AMP RATED WITH GROUND BAR. MAIN BREAKER INCLUDED.
- 11. OPTIONAL LOCKABLE WEATHERPROOF PIGTAIL PROVIDED.
- 12. CONCEALED ANCHOR CLIP- 1\"/>

- A. GLAZING TO BE 1/8\"/>
- B. PAINT- RUST INHIBITIVE PRIMER WITH AN INDUSTRIAL FINISH. (PLEASE SPECIFY COLOR)
- C. ELECTRICAL- ALL WIRING BY PAR-KUT TO BE #12(MIN) STRANDED COPPER, TYPE THHN ENCLOSED IN 1/2\"/>
- D. ALL ELECTRIC WILL BE SURFACE MOUNTED.
- E. BOOTH WILL HAVE NO CANOPY OVERHANG.
- F. LIFTING RING(S) PROVIDED IN ROOF.
- G. OPTIONAL FLOOR WILL HAVE PLYWOOD & VINYL COMPOSITE TILE.
- H. ALL JOINTS AT TUBES AND PLATES ARE FILL PRIOR TO BEING PAINTED.
- I. ALL WELDS ARE GROUNDED DOWN TO A SMOOTH FINISH.
- J. NO ON SITE WORK BY PAR-KUT.

NOTE: PAR-KUT BOOTHS ARE OF SINGLE UNIT WELDED GALVANIZED STEEL CONSTRUCTION, FACTORY ASSEMBLED AND DELIVERED SET UP. FAILURE TO SECURELY ANCHOR BOOTH MAY RESULT IN OVERTURNING OF UNIT AND SERIOUS INJURY TO OCCUPANT.



PLAN VIEW

ANCHOR BOLT LAYOUT

A/E NOTES  
 PAINT COLOR:  
 ALL CONDUITS ARE EXPOSED. (SURFACE MOUNTED)

NOTE: THIS PRINT AND DESIGN ARE THE PROPERTY OF PAR-KUT INTERNATIONAL, INC. IT MUST NOT BE REPRODUCED IN ANY MANNER, NOR SHALL IT BE SUBMITTED TO OUTSIDE PARTIES FOR EXAMINATION WITHOUT OUR CONSENT. IT SHALL BE USED ONLY AS A MEANS OF REFERENCE TO WORK DESIGNED AND FURNISHED BY PAR-KUT. PAR-KUT RESERVES THE RIGHT TO MAKE CHANGES TO DESIGN FOR ENGINEERING PURPOSES WITHOUT NOTICE.

PAR-KUT INTERNATIONAL, INC.  
 40961 Production Drive  
 Harrison Twp, Mich.  
 48045-1351  
 PH. (810) 468-2947

DWG# 0014 #FRONTPAGE

SCALE	NTS	DRAWN BY	JWH / DLT	REVISED	11-6-2014
DATE	7-25-2000	SIZE	7' X 12'	QTY	
CHK'D BY:		REVISION(S)	CHK'D BY:		