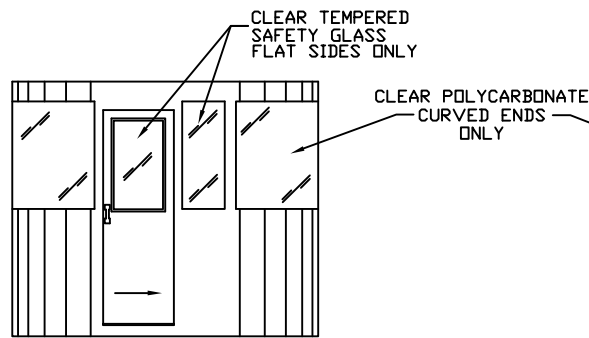
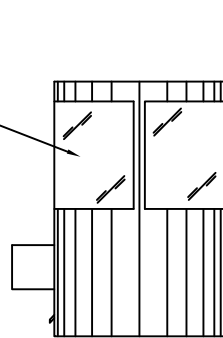


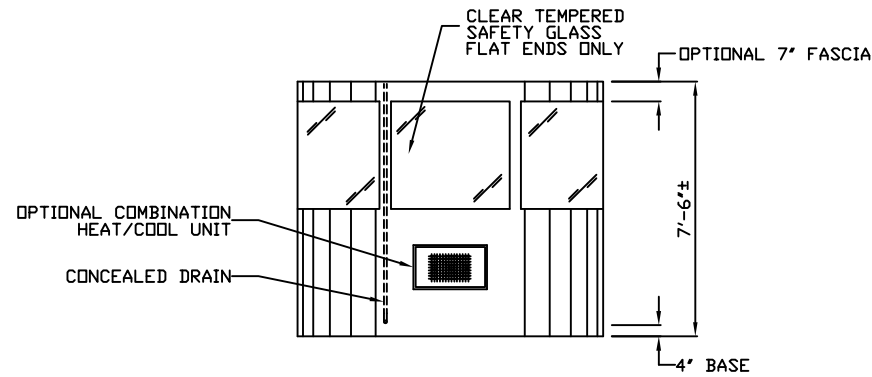
REAR ELEVATION



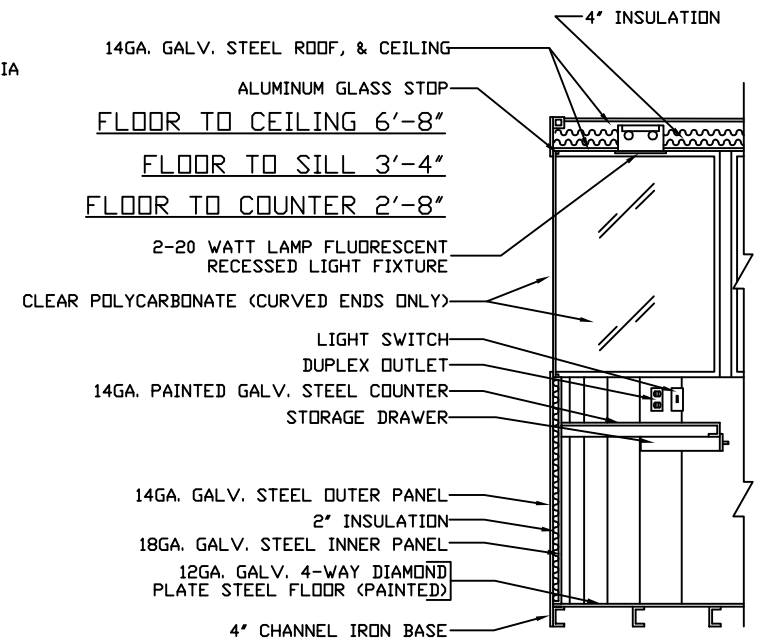
LEFT ELEVATION



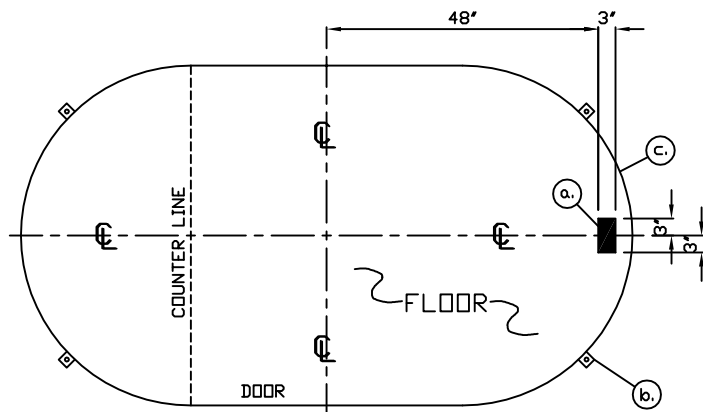
FRONT ELEVATION



RIGHT ELEVATION



SECTION ZZ  
NO SCALE



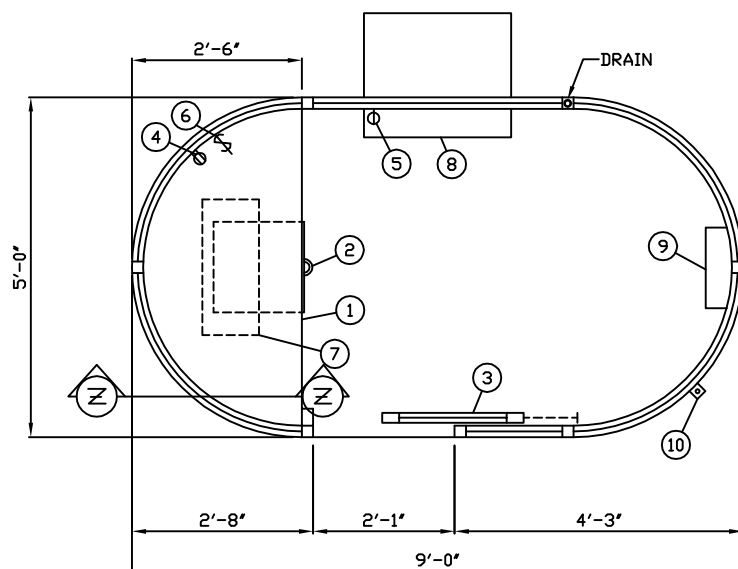
NOTE: PROVIDE 120/208V, 1Ø-3 WIRE SERVICE WITH GROUND.  
SERVICE ENTRANCE/ANCHOR BOLT LAYOUT

- 3' X 6' SLOT IN FLOOR FOR ELECTRIC SERVICE ENTRANCE TO C.B. PANEL ABOVE
- 2' X 2' X 1/4" MIN. ANCHOR CLIP WITH 3/4" ANCHOR BOLT HOLE, 4-REQ'D. ONE EACH CORNER. ANCHOR BOOTH AFTER FINAL LOCATION. ANCHOR BOLTS NOT INCLUDED
- OUTER EDGE OF BASE

- COUNTER- 30" DEEP RECESSED PAINTED GALVANIZED STEEL 32" ABOVE FINISH FLOOR.
- STORAGE DRAWER BENEATH COUNTER.
- DOOR- 25" WIDE, SLIDING STEEL WITH WEATHER-STRIPPING, BALL BEARING HANGERS, SAFETY GLAZING, HEAVY DUTY TRACK, LOCK, & HARDWARE.
- DUPLEX OUTLET- 120V.
- SINGLE RECEPTACLE FOR OPTIONAL COMBINATION HEAT/COOL UNIT ONLY.
- LIGHT SWITCH FOR INTERIOR LIGHT.
- LIGHT- 2-20 WATT LAMP FLUORESCENT RECESSED LIGHT FIXTURE WITH LENS.
- OPTIONAL COMBINATION HEAT/COOL UNIT- GE AJJ10DF 240V./9,300 WALL MOUNTED WITH INTEGRAL THERMOSTAT CONTROL.
- C.B. PANEL- 120/240V, 1Ø-3 WIRE WITH GROUND BAR. MAIN BREAKER INCLUDED.
- ANCHOR CLIP- 2' X 2" STEEL WELDED TO BASE AT GRADE WITH 3/4" ANCHOR BOLT HOLE. 4 REQ'D ANCHOR BOOTH AFTER FINAL LOCATION. ANCHOR BOLTS NOT INCLUDED.

NOTE: PAR-KUT BOOTHS ARE OF SINGLE UNIT WELDED GALVANIZED STEEL CONSTRUCTION, FACTORY ASSEMBLED AND DELIVERED SET UP. FAILURE TO SECURELY ANCHOR BOOTH MAY RESULT IN OVERTURNING OF UNIT AND SERIOUS INJURY TO OCCUPANT.

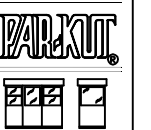
- GLAZING TO BE CLEAR TEMPERED SAFETY GLASS IN FLAT SIDES AND CLEAR POLYCARBONATE IN CURVED ENDS ALL WITH PAINTED ALUMINUM GLASS STOPS.
- PAINT- A RUST INHIBITIVE EPOXY PRIMER WITH INDUSTRIAL ENAMEL FINISH.
- ELECTRICAL- ALL WIRING BY PAR-KUT TO BE #12(MIN) STRANDED COPPER, THHN ENCLOSED IN 1/2"(MIN) E.M.T. PER NATIONAL ELECTRIC CODE. FITTINGS, FIXTURES & DEVICES ARE U.L. LABELED. ALL WIRING TO TERMINATE AT C.B. PANEL. ALL CIRCUITS HAVE GREEN GROUND WIRE.
- BOOTH WILL HAVE NO CANOPY OVERHANG ON ANY SIDES.
- LIFTING RING(S) ARE PROVIDED ON ROOF.
- NO ON SITE WORK BY PAR-KUT.



PLAN VIEW

NOTE: THIS PRINT AND DESIGN ARE THE PROPERTY OF PAR-KUT INTERNATIONAL, INC. IT MUST NOT BE REPRODUCED IN ANY MANNER, NOR SHALL IT BE SUBMITTED TO OUTSIDE PARTIES FOR EXAMINATION WITHOUT OUR CONSENT. IT SHALL BE USED ONLY AS A MEANS OF REFERENCE TO WORK DESIGNED AND FURNISHED BY PAR-KUT. PAR-KUT RESERVES THE RIGHT TO MAKE CHANGES TO DESIGN FOR ENGINEERING PURPOSES WITHOUT NOTICE. REVISIONS MAY NOT BE NOTED!

PAR-KUT INTERNATIONAL, INC.  
40961 Production Drive  
Harrison Twp, Mich.  
48045-1351  
PH. (810) 468-2947



DWG# VALET

#95CRV

A/E NOTES		
PAINT COLOR: _____		
SCALE NONE	DRAWN BY AJP / DLT	REVISED 11-6-2014
DATE 7-25-2000	SIZE 5' X 9'	QTY
CHK'D BY:	REVISION(S) CHK'D BY:	