

- a. SLOT IN FLOOR FOR ELECTRIC SERVICE ENTRANCE TO C.B. PANEL ABOVE
- b. 3" X 3" X 1/4" MIN. ANCHOR CLIP WITH 1" ANCHOR BOLT HOLE, 4 REQUIRED, ONE EACH CORNER. ANCHOR BOLT AFTER FINAL LOCATION. ANCHOR BOLTS NOT INCLUDED
- c. OUTER EDGE OF BASE
- d. 2" X 4" TUBE STEEL BRACES MOUNTED 12" APPROX. ON CENTERS
- e. 3" DIA. HOLE IN FLOOR FOR WATER INLET.
- f. 6" DIA. HOLE IN FLOOR FOR WATER CLOSET.
- g. VENT STACK: 6" DIA HOLE IN FLOOR. 5" DIA. SLEEVE THRU ROOF.
- h. SLOT IN FLOOR FOR OWNER PVC TUBE SYSTEM.

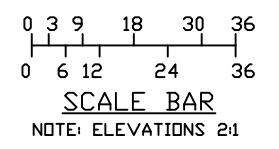
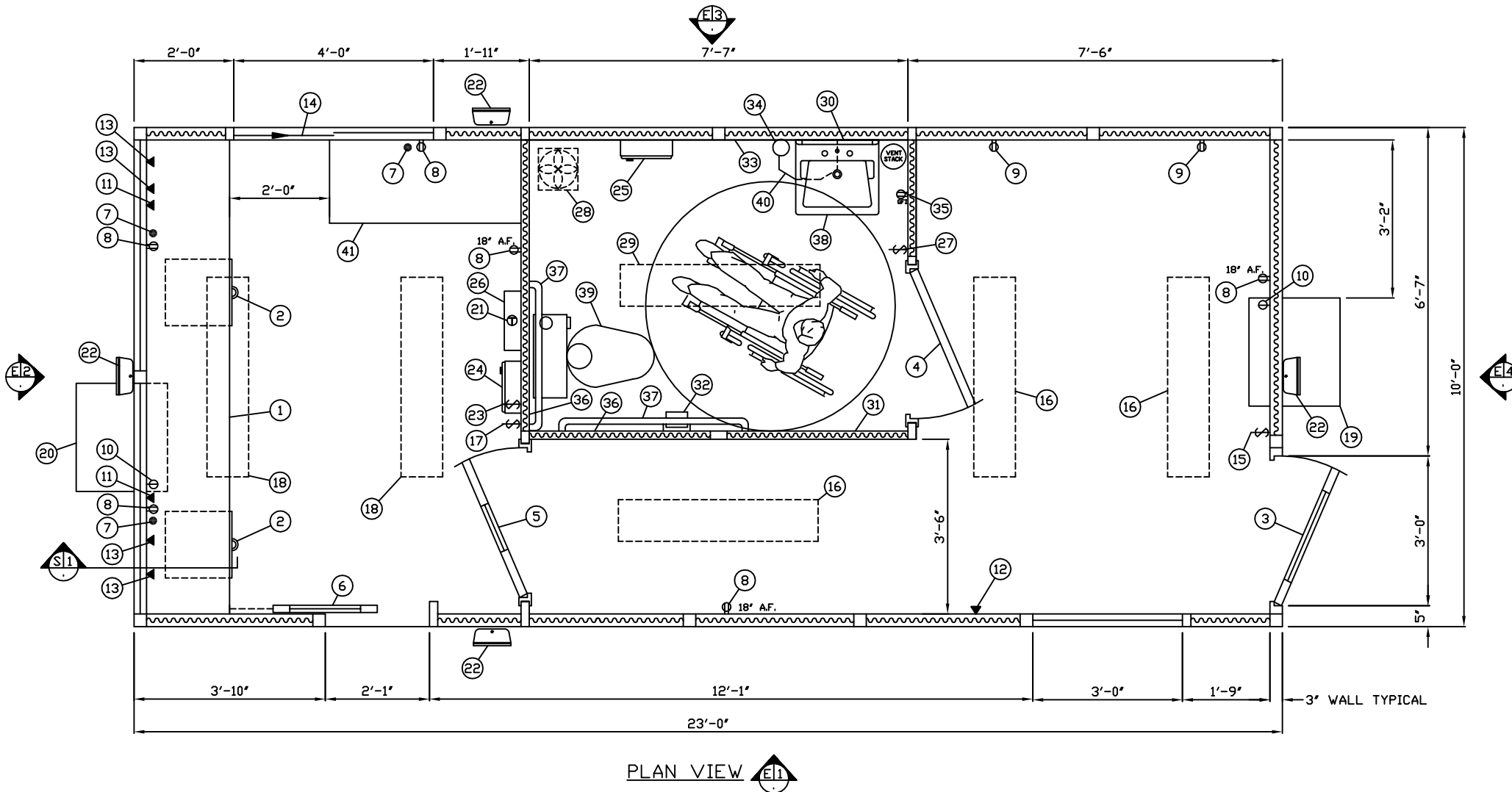
GLAZING OPTIONS & RELATED NOTES

GLAZING EQUAL TO BUT LESS THAN 9 SQUARE FEET SHALL BE 1/8" MINIMUM THICKNESS.
 GLAZING GREATER THAN 9 SQUARE FEET BUT EQUAL TO OR LESS THAN 16 SQUARE FEET SHALL BE 3/16" MINIMUM THICKNESS.
 GLAZING GREATER THAN 16 SQUARE FEET BUT EQUAL TO OR LESS THAN 25 SQUARE FEET SHALL BE 1/4" MINIMUM THICKNESS.

NOTE: FOR WIND BORNE DEBRIS PROTECTION, WINDOWS ARE TO BE BOARDED UP WITH 7/16" OSB PRIOR TO A HURRICANE EVENT.

NOTE: PROVIDE 120/240V. 1Ø-3 WIRE SERVICE WITH GROUND.
 SERVICE ENTRANCE/ANCHOR BOLT LAYOUT

REFER TO SHEET A-1
 FOR ITEM DESCRIPTIONS



NOTE: THIS PRINT AND DESIGN ARE THE PROPERTY OF PAR-KUT INTERNATIONAL, INC. IT MUST NOT BE REPRODUCED IN ANY MANNER, NOR SHALL IT BE SUBMITTED TO OUTSIDE PARTIES FOR EXAMINATION WITHOUT OUR CONSENT. IT SHALL BE USED ONLY AS A MEANS OF REFERENCE TO WORK DESIGNED AND FURNISHED BY PAR-KUT. PAR-KUT RESERVES THE RIGHT TO MAKE CHANGES TO DESIGN FOR ENGINEERING PURPOSES WITHOUT NOTICE. REVISIONS MAY NOT BE NOTED.

PAR-KUT INTERNATIONAL, INC.
 40961 Production Drive
 Harrison Twp, Mich.
 48045-1351
 PH. (586) 468-2947



DWG# 03-260 SHEET A-1

UNITED FACILITIES INC
 THE WIELAND DAVCO CORP
 ORLANDO, FL

GENERAL NOTES		
PD# 202340	SCALE NTS	DRAWN BY AJP
MAIN BOOTH PAINT COLOR: MIST GRAY #DC2301	DATE 6-24-2003	SIZE 10' X 23'
FASCIA PAINT COLOR: COBALT BLUE #DC4752	CHK'D BY:	QTY 1
TINTED GLAZING COLOR: GRAY		SALES REPRESENTATIVE MAL NEWCOMB

REVISED 11-6-2014

1. COUNTER- 20" DEEP PAINTED GALVANIZED STEEL MOUNTED 32" ABOVE FLOOR.
2. PAINTED STORAGE DRAWER BENEATH COUNTER, 2-REQ'D.
3. DOOR- 36" WIDE, SWINGING STEEL WITH WEATHER-STRIPPING, BALL BEARING BUTTS, SAFETY GLAZING, HYDRAULIC CLOSER, LEVER HANDLE LOCK, & HARDWARE.
4. PRIVACY DOOR- 36" WIDE, SWINGING STEEL WITH LEVER HANDLE LOCK.
5. DOOR- 36" WIDE, SWINGING STEEL WITH BALL BEARING BUTTS, 10' X 10' VISION LITE WITH CLEAR TEMPERED SAFETY GLAZING, LEVER HANDLE LOCK, & HARDWARE.
6. DOOR- 25" WIDE, SLIDING STEEL WITH WEATHER-STRIPPING, BALL BEARING HANGERS, SAFETY GLAZING, HEAVY DUTY TRACK, LOCK, & HARDWARE.
7. HOLE IN COUNTER FOR DROP CORDS TO OUTLET, 3-REQ'D.
8. DUPLEX OUTLET- MOUNTED BELOW COUNTER OR AS INDICATED, 6-REQ'D.
9. DUPLEX OUTLET EACH ON A DEDICATED CIRCUIT MOUNTED 48" ABOVE FLOOR, 2-REQ'D.
10. SINGLE OUTLET FOR AIR CONDITIONER UNITS, 2-REQ'D.
11. PHONE JACK MOUNTED BELOW COUNTER HEIGHT WITH RACEWAY TO JUNCTION BOX NEAR FLOOR SLOT, 2-REQ'D.
12. PHONE JACK MOUNTED 40" ABOVE FLOOR WITH 3/4" RACEWAY TO JUNCTION BOX NEAR FLOOR SLOT.
13. DATA JACK WITH 3/4" RACEWAY TO 4" X 4" JUNCTION BOX MOUNTED NEAR FLOOR SLOT, 4-REQ'D.
14. TRANSACTION WINDOW MOUNTED 32" ABOVE FLOOR.
15. LIGHT SWITCH FOR INTERIOR LIGHTS, ITEM #16.
16. LIGHT- 2-34 WATT LAMP FLUORESCENT LIGHT FIXTURE WITH LENS, 3-REQ'D.
17. LIGHT SWITCH FOR INTERIOR LIGHTS, ITEM #18.
18. LIGHT- 2-34 WATT LAMP FLUORESCENT LIGHT FIXTURE WITH LENS, 2-REQ'D.
19. AIR CONDITIONER HEAT/COOL UNIT 240V./11,600 BTU WALL MOUNTED WITH INTEGRAL THERMOSTAT CONTROL.
20. AIR CONDITIONER- 240V/11,600 BTU COOL ONLY WITH WALL MOUNTED THERMOSTAT CONTROL
21. WALL MOUNTED THERMOSTAT FOR ITEM #20.
22. LIGHT- 120V/70 WATT METAL HALIDE FLOOD LIGHT, 4-REQUIRED. THE TWO ALONG LENGTH WILL BE SHIPPED LOOSE AND INSTALLED ON SITE BY OWNER.
23. LIGHT SWITCH FOR EXTERIOR LIGHTS, ITEM #22.
24. HEATER- 120V/1,500 WATT FAN FORCED WITH INTEGRAL THERMOSTAT CONTROL.
25. HEATER- 120V/1,500 WATT FAN FORCED WITH INTEGRAL THERMOSTAT CONTROL.
26. C.B. PANEL- 16 SPACE 120/240V. 1Ø-3 WIRE WITH GROUND BAR. 100 AMP MAIN BREAKER IS INCLUDED.
27. SWITCH FOR REST ROOM LIGHT AND EXHAUST FAN.
28. EXHAUST FAN MOUNTED IN REST ROOM CEILING, 70 CFM.
29. LIGHT- 2-34 WATT LAMP FLUORESCENT LIGHT FIXTURE WITH LENS.
30. MIRROR MOUNTED ABOVE LAVATORY.
31. COAT HOOK MOUNTED ON WALL.
32. TOILET PAPER HOLDER.
33. PAPER TOWEL DISPENSER.
34. LIQUID SOAP DISPENSER.
35. GROUND FAULT INTERRUPT RECEPTACLE
36. STAINLESS STEEL SPLASH GUARD, 2-REQ'D.
37. STAINLESS STEEL GRAB BARS, 2-REQ'D.

CIRCUIT BREAKER SCHEDULE											
PANEL: BOOTH 100A - 120/240V. - 1Ø - 3W - SN MAINS: <input type="checkbox"/> MLD <input checked="" type="checkbox"/> MCB 100A. MTG. <input type="checkbox"/> S <input type="checkbox"/> F											
LOAD DESCRIPTION	LOAD (WATTS)	CKT. BKR.	POLE	CKT. NO.	PHASES A B	CKT. NO.	POLE	CKT. BKR.	LOAD (WATTS)	LOAD DESCRIPTION	
HEAT/COOL A/C UNIT	1,700	20	2	1		2	2	10	645	A/C UNIT	
HEATER	1,700	20	2	3		4	2	20	645	HEATER	
DEDICATED OUTLET	360	20	1	7		8	1	20	1,350	WATER HEATER	
INTERIOR LIGHTING/REST ROOM ELECTRIC	844	20	1	9		10	1	20	360	DEDICATED OUTLET	
EXTERIOR LIGHTING	280	20	1	11		12	1	20	1,800	DUPLEX RECEPTACLES	
SPACE	-	-	-	9		10	-	-	-	SPACE	
SPACE	-	-	-	11		12	-	-	-	SPACE	

12,684
240 = 52.85
TOTAL LOAD AMPS = 53±

CIRCUIT BREAKER SCHEDULE

NOTE: THE FOLLOWING ITEMS ARE SHIPPED LOOSE CARTONS AND FIELD INSTALLED AT SITE BY OTHERS.

38. WHITE CHINA LAVATORY WITH CHROME FAUCET.
39. WHITE CHINA WATER CLOSET WITH OPEN FRONT SEAT.
40. WATER HEATER- ARISTON 2-1/2 GALLON POINT OF USE.
41. COUNTER- 20" DEEP BOLT IN PAINTED GALVANIZED STEEL MOUNTED 32" ABOVE FLOOR.

NOTE: PAR-KUT BOOTHS ARE OF SINGLE UNIT WELDED GALVANIZED STEEL CONSTRUCTION, FACTORY ASSEMBLED AND DELIVERED SET UP. FAILURE TO SECURELY ANCHOR BOOTH MAY RESULT IN OVERTURNING OF UNIT AND SERIOUS INJURY TO OCCUPANT.

- A. GLAZING TO BE 44% TINTED TEMPERED SAFETY GLASS SET IN MILL FINISH ALUMINUM WINDOW FRAMES, EXCEPT IN ITEM #5 (DOOR) TO BE CLEAR TEMPERED SAFETY GLAZING. OPERATING WINDOWS WILL BE PROVIDED WITH INSECT SCREENS EXCEPT FOR TRANSACTION WINDOWS.
- B. PAINT- A RUST INHIBITIVE EPOXY PRIMER WITH AN INDUSTRIAL FINISH.
- C. ELECTRICAL- ALL WIRING BY PAR-KUT TO BE #12(MIN) STRANDED COPPER, THHN ENCLOSED IN 1/2"(MIN) E.M.T. PER NATIONAL ELECTRIC CODE. FITTINGS, FIXTURES & DEVICES ARE U.L. LABELED. ALL WIRING TO TERMINATE AT C.B. PANEL. ALL CIRCUITS HAVE GREEN GROUND WIRE.
- D. BOOTH WILL HAVE A 3" CANOPY OVERHANG ON ALL SIDES.
- E. LIFTING RING(S) ARE PROVIDED IN ROOF.
- F. NO ON SITE WORK BY PAR-KUT.

NOTE: THIS PRINT AND DESIGN ARE THE PROPERTY OF PAR-KUT INTERNATIONAL, INC. IT MUST NOT BE REPRODUCED IN ANY MANNER, NOR SHALL IT BE SUBMITTED TO OUTSIDE PARTIES FOR EXAMINATION WITHOUT OUR CONSENT. IT SHALL BE USED ONLY AS A MEANS OF REFERENCE TO WORK DESIGNED AND FURNISHED BY PAR-KUT. PAR-KUT RESERVES THE RIGHT TO MAKE CHANGES TO DESIGN FOR ENGINEERING PURPOSES WITHOUT NOTICE. REVISIONS MAY NOT BE NOTED.

PAR-KUT INTERNATIONAL, INC.
40961 Production Drive
Harrison Twp, Mich.
48045-1351
PH. (586) 468-2947

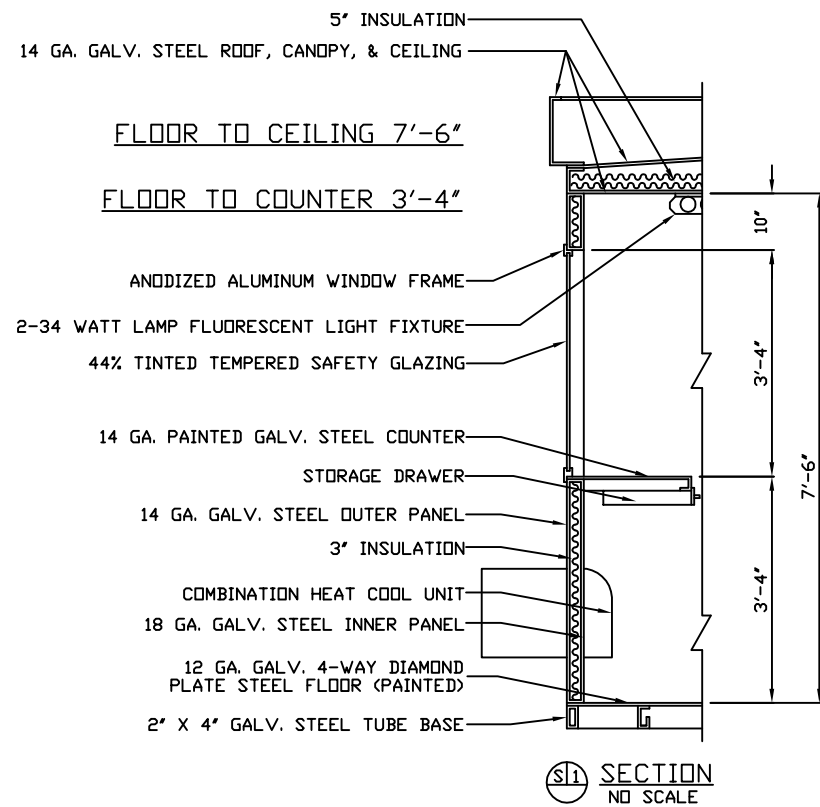
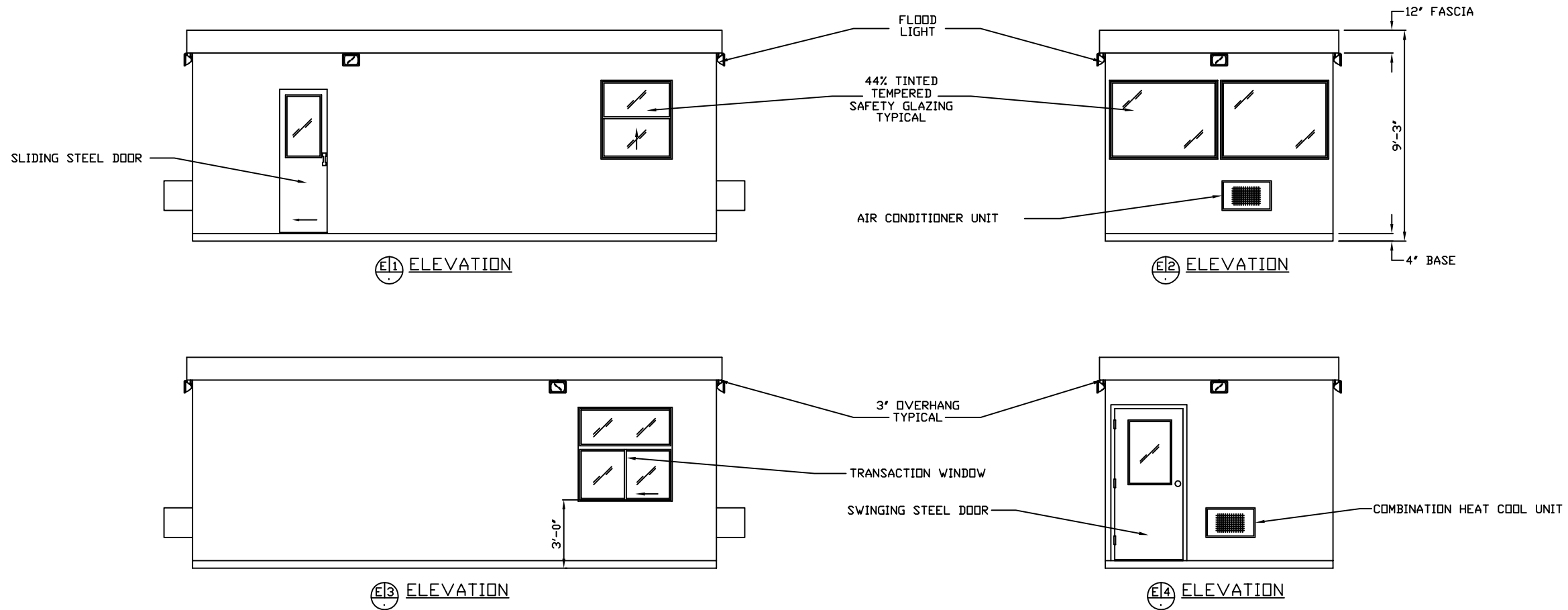


DWG# 03-260 SHEET A-2

UNITED FACILITIES INC
THE WIELAND DAVCO CORP
ORLANDO, FL

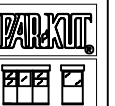
PD# 202340
SCALE NTS DRAWN BY AJP REVISED 8-20-2003
DATE 6-24-2003 SIZE 10' X 23' QTY 1
CHK'D BY: SALES REPRESENTATIVE MAL NEWCOMB

REFER TO SHEET A-1 FOR ITEM LOCATIONS



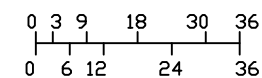
NOTE: THIS PRINT AND DESIGN ARE THE PROPERTY OF PAR-KUT INTERNATIONAL, INC. IT MUST NOT BE REPRODUCED IN ANY MANNER, NOR SHALL IT BE SUBMITTED TO OUTSIDE PARTIES FOR EXAMINATION WITHOUT OUR CONSENT. IT SHALL BE USED ONLY AS A MEANS OF REFERENCE TO WORK DESIGNED AND FURNISHED BY PAR-KUT. PAR-KUT RESERVES THE RIGHT TO MAKE CHANGES TO DESIGN FOR ENGINEERING PURPOSES WITHOUT NOTICE. REVISIONS MAY NOT BE NOTED.

PAR-KUT INTERNATIONAL, INC.
40961 Production Drive
Harrison Twp, Mich.
48045-1351
PH. (586) 468-2947



DWG# 03-260 SHEET A-3

UNITED FACILITIES INC
THE WIELAND DAVCO CORP
ORLANDO, FL



SCALE BAR
NOTE: ELEVATIONS 2:1

PD# 202340	DRAWN BY AJP	REVISED 11-6-2014
SCALE NTS	DATE 6-24-2003	QTY 1
CHK'D BY:	SIZE 10' X 23'	SALES REPRESENTATIVE MAL NEWCOMB