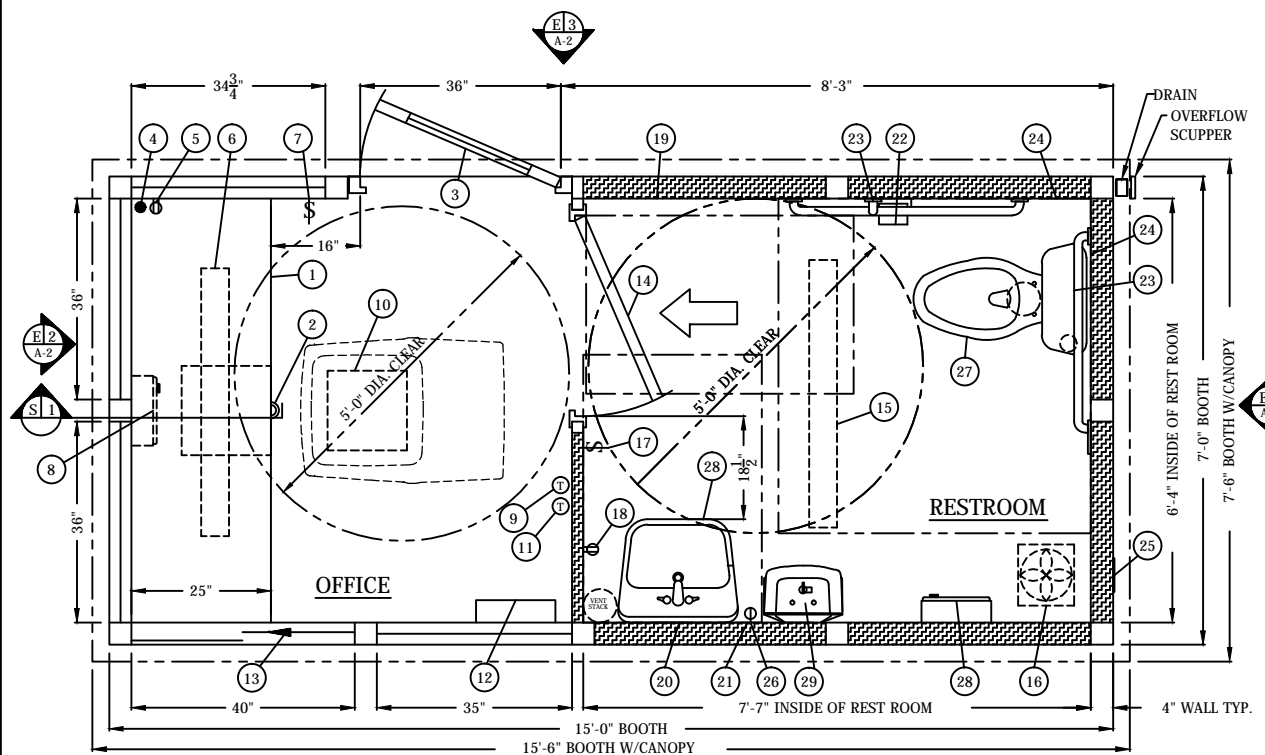


**SERVICE ENTRANCE ANCHOR BOLT LAYOUT**



**PLAN VIEW**

- a. SLOT IN FLOOR FOR ELECTRICAL SERVICE ENTRANCE TO C.B. PANEL.
- b. 3" Ø HOLE THROUGH FLOOR FOR WATER INLET.
- c. 6" Ø HOLE THROUGH FLOOR FOR WATER CLOSET.
- d. VENT STACK: 6" Ø HOLE THROUGH FLOOR  
5" Ø HOLE THROUGH ROOF
- e. 3" X 3" X 3/8" (MIN) STEEL ANCHOR CLIP WITH A 1" ANCHOR BOLT HOLE. 4-REQ'D, ONE EACH CORNER.  
ANCHOR BOOTH AFTER FINAL LOCATION. ANCHOR BOLTS NOT INCLUDED.
- f. OUTER EDGE OF BOOTH.
- g. SUGGESTED MINIMUM FOUNDATION/SLAB.

**GENERAL SITE INSTALLED ITEMS PROVIDED BY OTHERS**

1. PROVIDE 120/240V, 1 Ø-3 WIRE SERVICE WITH GROUND.
2. CONCRETE FOUNDATION/SLAB MINIMUM 6" DEEP 3,000 PSI MINIMUM (28 DAY ACI 318). THE FOUNDATION/SLAB SHOULD BE MINIMUM OF 24" WIDER THAN THE ROOF LINE DIMENSIONS TO ALLOW A 12" CONCRETE BORDER ON EACH SIDE OF THE BUILDING ROOF LINE.
3. ADEQUATE SIZE DRILLED ANCHOR BOLTS. SUGGESTED SIZE 3/4" X 4 3/4" POWER FASTENERS "POWER STUD" CATALOG #7332.

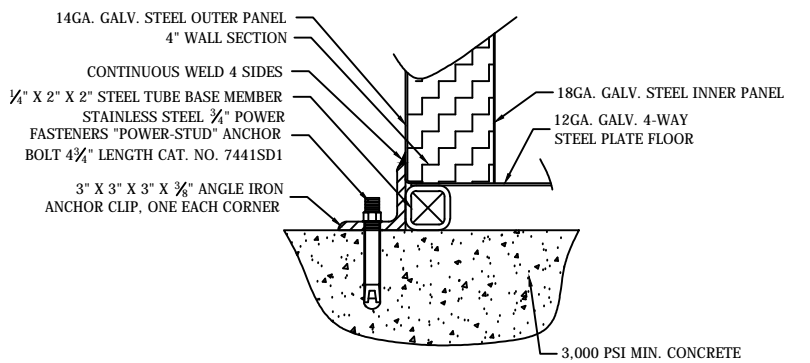
1. COUNTER - 25" DEEP PAINTED GALVANIZED STEEL MOUNTED 32" A.F.F.
2. PAINTED STORAGE DRAWER.
3. DOOR - 36" WIDE SWINGING STEEL WITH WEATHER-STRIPPING, BALL BEARING BUTTS, HYDRAULIC CLOSER, SAFETY GLAZING, LEVER HANDLE LOCKSET, AND HARDWARE.
4. HOLE IN COUNTER FOR DROP CORDS.
5. DUPLEX OUTLET MOUNTED BELOW COUNTER.
6. CODE COMPLIANT LIGHT FIXTURE.
7. WALL SWITCH FOR INTERIOR LIGHT.
8. HEATER - WALL MOUNTED WITH WALL THERMOSTAT CONTROL.
9. WALL THERMOSTAT FOR HEATER.
10. AIR CONDITIONER - ROOF MOUNTED WITH INTEGRAL THERMOSTAT CONTROL.
11. WALL THERMOSTAT FOR AIR CONDITIONER.
12. CIRCUIT BREAKER PANEL - 12 SPACE, 120/240V, 1 Ø-3 WIRE WITH GROUND BAR, 100 AMP MAIN BREAKER, AND ALL BRANCH BREAKERS FOR FACTORY INSTALLED DEVICES PROVIDED.
13. HORIZONTAL SLIDING TRANSACTION WINDOW.
14. SWINGING DOOR WITH LEVER HANDLE PRIVACY LOCK.
15. CODE COMPLIANT LIGHT FIXTURE.
16. 80 CFM EXHAUST FAN.
17. SWITCH FOR REST ROOM LIGHT AND EXHAUST FAN.
18. GFCI RECEPTACLE.
19. COAT HOOK MOUNTED ON WALL.
20. MIRROR.
21. PAPER TOWEL DISPENSER.
22. TOILET PAPER HOLDER.
23. STAINLESS STEEL GRAB BAR.
24. OFF WHITE FIBERGLASS REINFORCED PANEL BACK SPLASH.
25. EXHAUST FAN VENT WITH INSECT SCREEN.
26. SINGLE RECEPTACLE FOR WATER HEATER.

NOTE: THE FOLLOWING ITEMS ARE SHIPPED LOOSE, FIELD INSTALLED ON SITE BY OTHERS, NO PIPING OR PLUMBING BY PAR-KUT.

27. WATER CLOSET WITH OPEN FRONT SEAT.
28. LAVATORY WITH CHROME FAUCET.
29. ARISTON 2 1/2 GALLON POINT OF USE WATER HEATER.

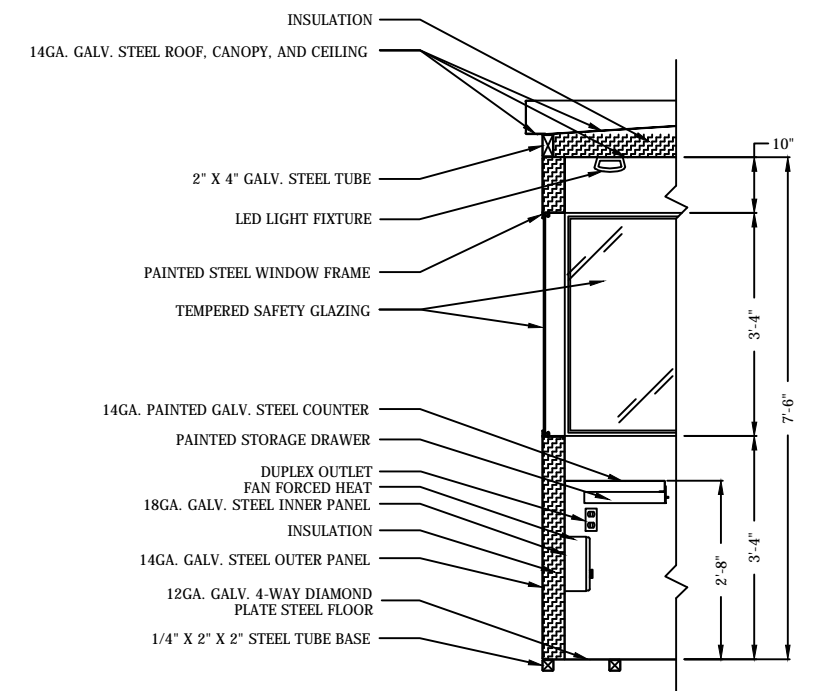
NOTE: PAR-KUT BOOTHS ARE OF SINGLE UNIT WELDED STEEL CONSTRUCTION, FACTORY ASSEMBLED AND DELIVERED SET UP. FAILURE TO SECURELY ANCHOR BOOTH MAY RESULT IN OVERTURNING OF UNIT AND SERIOUS INJURY TO OCCUPANT.

- A. GLAZING - TEMPERED SAFETY GLAZING SET IN PAINTED STEEL EXTERIOR FRAME WITH REMOVABLE INTERIOR ALUMINUM GLAZING STOPS.
- B. PAINT - FINISH SHALL BE SINGLE COLOR OF CHOICE, IMRON POLYURETHANE HIGH GLOSS INDUSTRIAL COATING. SHALL BE APPLIED TO ALL EXPOSED METAL SURFACES. THIS EXCLUDES ROOF SURFACE, AND ANY STAINLESS STEEL COMPONENTS (IF USED).
- C. ELECTRICAL - ALL WIRING BY PAR-KUT TO BE #12(MIN) STRANDED COPPER, THHN ENCLOSED IN 1/2" (MIN) E.M.T. PER NATIONAL ELECTRIC CODE. ALL ELECTRICAL EQUIPMENT WILL BE LISTED BY U.L. OR EQUIVALENT RECOGNIZED NATIONAL TESTING LABORATORY. ALL WIRING TO TERMINATE AT C.B. PANEL. ALL CIRCUITS HAVE GREEN GROUND WIRE.
- D. BOOTH WILL HAVE A 3" CANOPY OVERHANG ON ALL SIDES.
- E. LIFTING RING(S) ARE PROVIDED ON ROOF.
- F. NO ON SITE WORK BY PAR-KUT.
- G. ACTUAL LOCATION OF ELECTRICAL DEVICES MAY VARY DUE TO INSTALLATION CONSTRAINTS, SHIPPING RESTRICTIONS, OR FOR PROPER PLACEMENT TO SATISFY APPLICABLE CODES.



**FIELD DRILLED ANCHOR BOLT DETAIL**  
NO SCALE

THIS DRAWING IS FOR REFERENCE PURPOSES ONLY. PAR-KUT BUILDINGS MUST BE SECURELY ANCHORED IN PLACE AND ELECTRICAL SYSTEM MUST BE PROPERLY GROUNDED. ADEQUATE SIZED ANCHOR BOLTS SHALL BE USED. THE SIZE AND DEPTH OF THE ANCHORS SHOULD BE OF SUFFICIENT DESIGN TO WITHSTAND THE HIGHEST RECORDED WIND SPEEDS/SEISMIC DESIGN CATEGORY IN THE AREA OF INSTALLATION. CONSULT A PROFESSIONAL ENGINEER FAMILIAR WITH THE WEATHER CONDITIONS IN THE AREA.



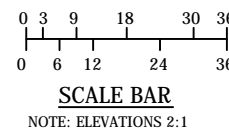
**SECTION A-1**  
NO SCALE

NOTE: THIS PRINT AND DESIGN ARE THE PROPERTY OF PAR-KUT INTERNATIONAL, INC. IT MUST NOT BE REPRODUCED IN ANY MANNER, NOR SHALL IT BE SUBMITTED TO OUTSIDE PARTIES FOR EXAMINATION WITHOUT OUR CONSENT. IT SHALL BE USED ONLY AS A MEANS OF REFERENCE TO WORK DESIGNED AND FURNISHED BY PAR-KUT. PAR-KUT RESERVES THE RIGHT TO MAKE CHANGES TO DESIGN FOR ENGINEERING PURPOSES WITHOUT NOTICE. REVISIONS MAY NOT BE NOTED.

PAR-KUT INTERNATIONAL, INC.  
40961 Production Drive  
Harrison Twp, Mich.  
48045-1351  
Ph. (586) 468-2947  
www.parkut.com

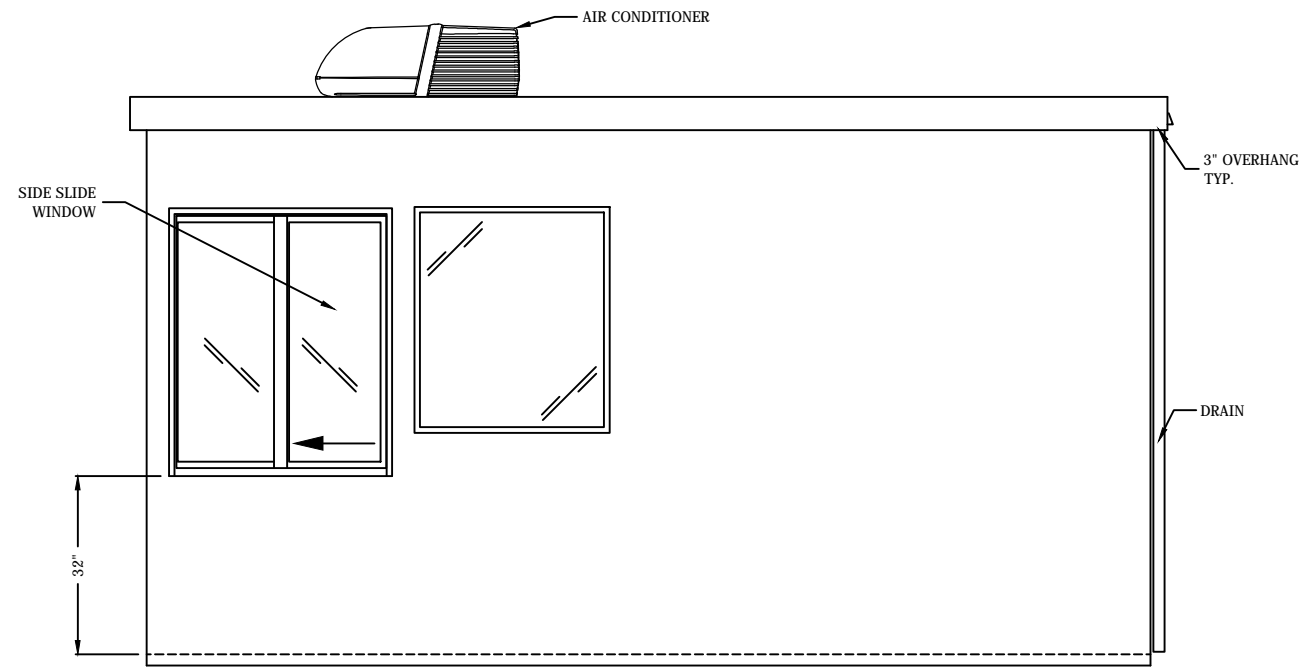


**A.D.A. NOTE**  
BOOTH MUST BE HANDICAP ACCESSIBLE. THE FOUNDATION MAY BE RECESSED OR A 1:12 RAMP MUST BE PROVIDED SO THAT MAXIMUM CHANGE IN LEVEL FROM GRADE TO FINISH FLOOR DOES NOT EXCEED 1/4"

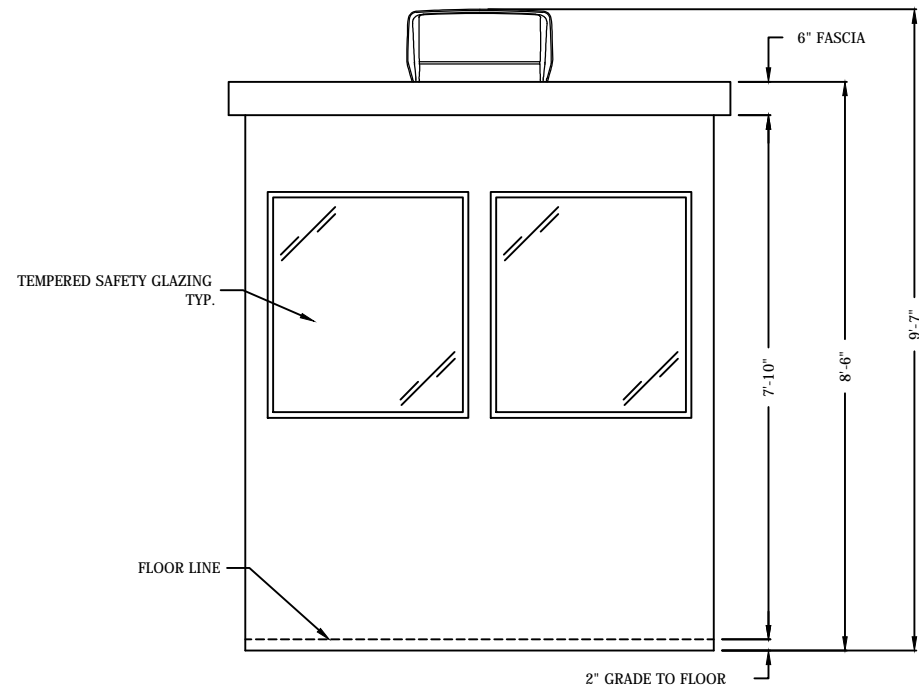


GENERAL NOTES	
DESIGN AND LAYOUT SUBJECT TO CHANGE DUE TO ADA CODE REQUIREMENTS.	
BOOTH PAINT COLOR:	
GLAZING TINT COLOR:	
(PLEASE SPECIFY COLORS)	
OVERALL SHIPPING DIMENSIONS:	7'6" X 15'6" X 9'7"
ESTIMATED WEIGHT:	4,500 LBS.

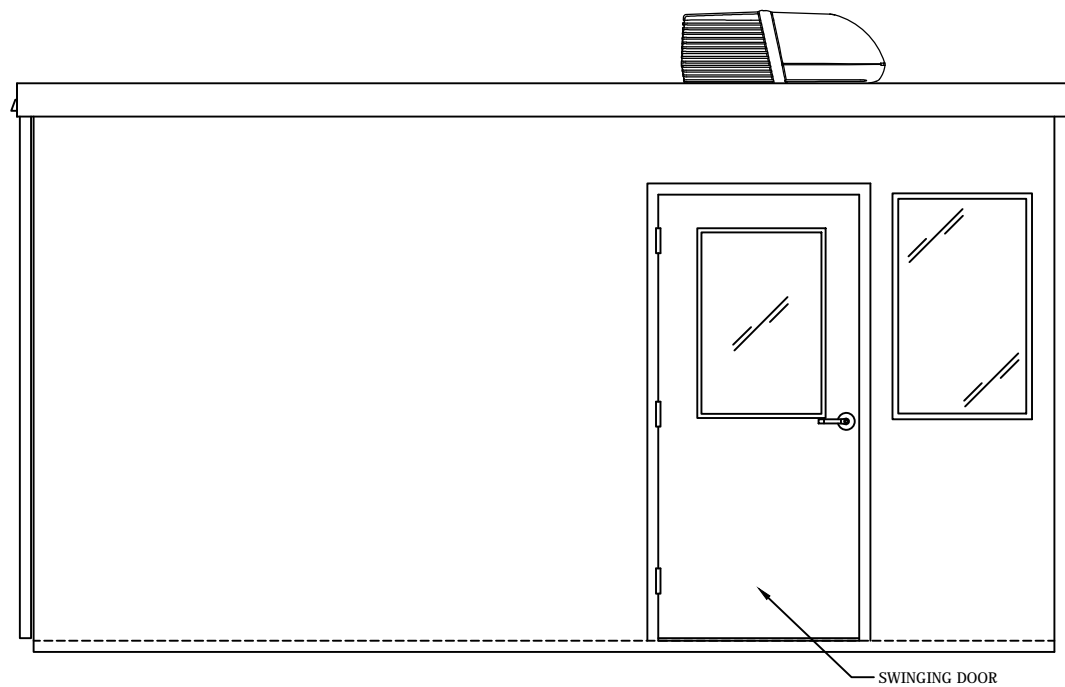
DWG#	PK157rhc	SHEET	A-1
STANDARD 7'-0" X 15'-0" ADA REST ROOM BOOTH MODEL PK157RHC			
PO#		SCALE	NTS
DRAWN BY	EJL/DPH	REVISED	7-26-2017
DATE	12-5-2016	SIZE	7'0" X 15'-0"
CHK'D BY:	RAN	SALES REPRESENTATIVE	



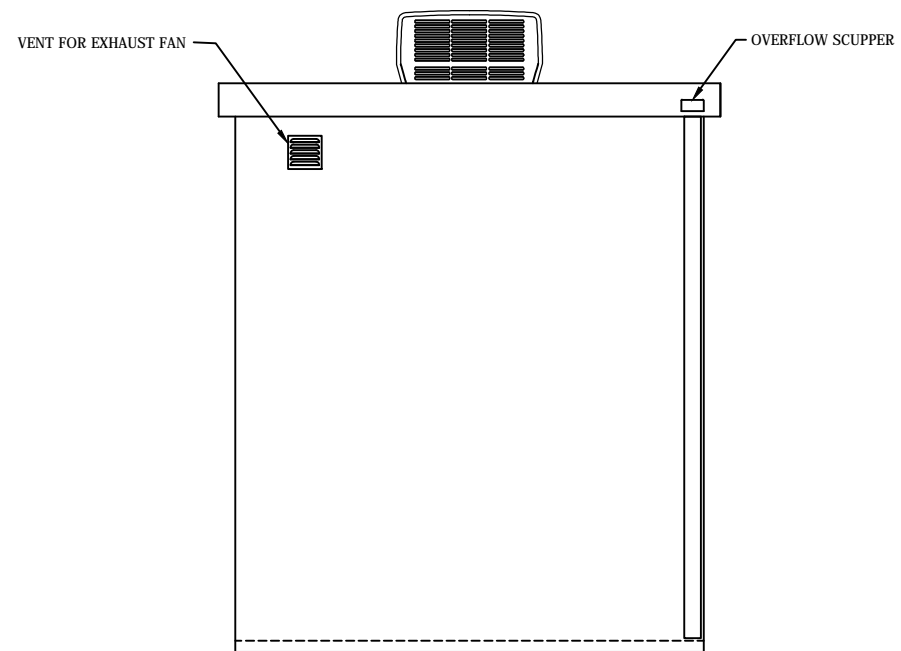
**E1**  
A-1 ELEVATION



**E2**  
A-1 ELEVATION



**E3**  
A-1 ELEVATION



**E4**  
A-1 ELEVATION

NOTE: THIS PRINT AND DESIGN ARE THE PROPERTY OF PAR-KUT INTERNATIONAL, INC. IT MUST NOT BE REPRODUCED IN ANY MANNER, NOR SHALL IT BE SUBMITTED TO OUTSIDE PARTIES FOR EXAMINATION WITHOUT OUR CONSENT. IT SHALL BE USED ONLY AS A MEANS OF REFERENCE TO WORK DESIGNED AND FURNISHED BY PAR-KUT. PAR-KUT RESERVES THE RIGHT TO MAKE CHANGES TO DESIGN FOR ENGINEERING PURPOSES WITHOUT NOTICE. REVISIONS MAY NOT BE NOTED.

PAR-KUT INTERNATIONAL, INC.  
40961 Production Drive  
Harrison Twp, Mich.  
48045-1351  
PH. (586) 468-2947  
www.parkut.com



DWG# **PK157rhc** SHEET **A-2**

STANDARD 7'-0" X 15'-0"  
ADA REST ROOM BOOTH  
MODEL PK157RHC

SCALE	DRAWN BY	REVISED
NTS	EJL/DPH	7-10-2017
DATE	SIZE	QTY
12-5-2016	7'0" X 15'0"	
CHK'D BY:	SALES REPRESENTATIVE	