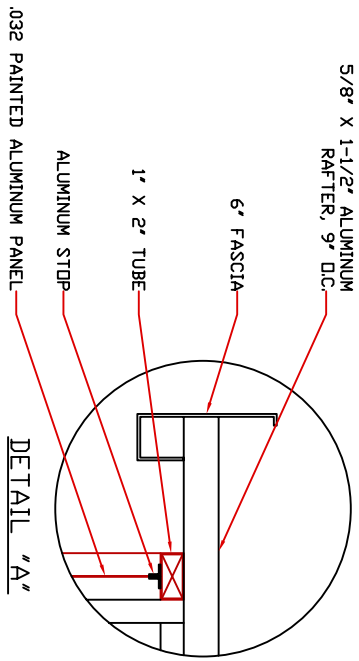
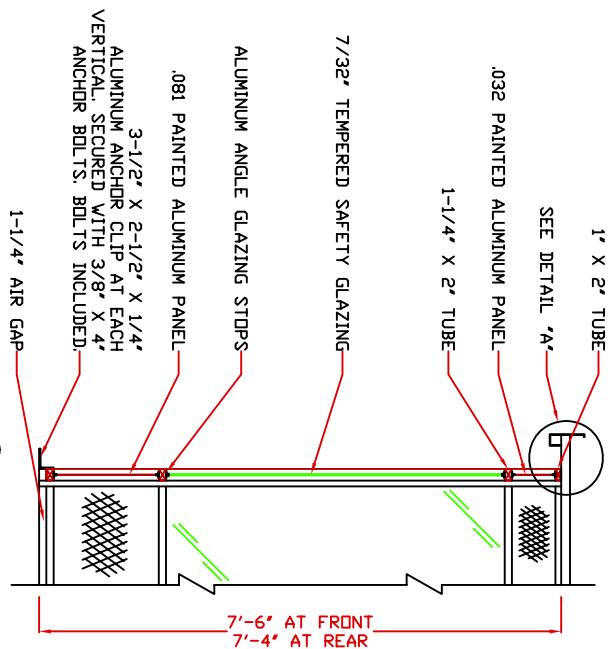


E1 ELEVATION

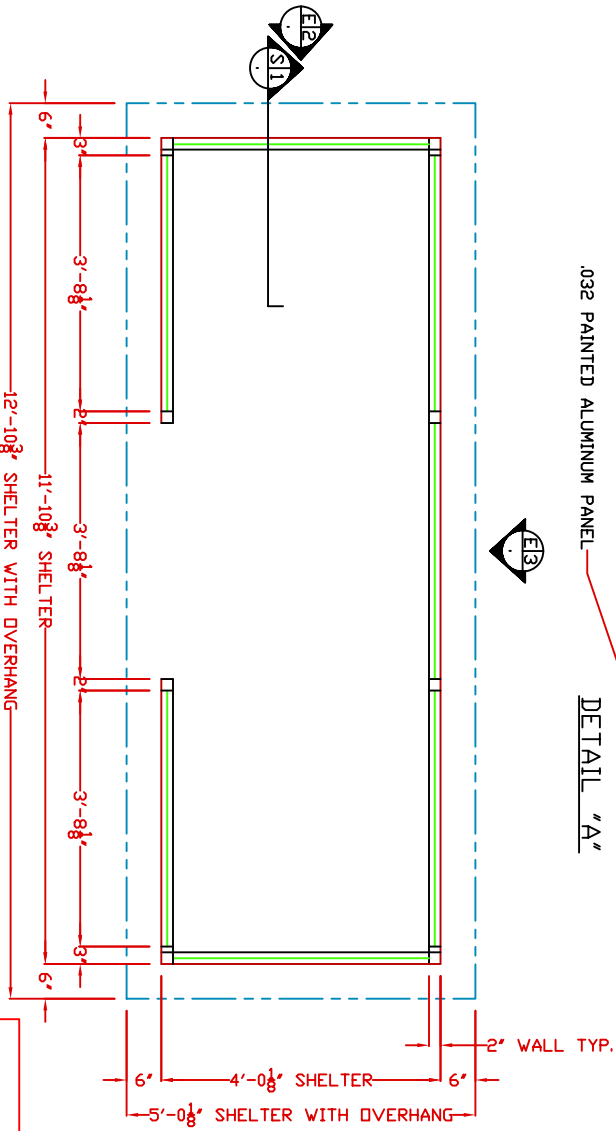
E4 ELEVATION



DETAIL "A"

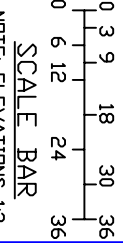


S11 SECTION  
NO SCALE



PLAN VIEW

1. ROOF TO BE FIBERGLASS, KICK PANELS PAINTED COLOR OF CHOICE.
2. FRAMING CLIPS TO BE ANODIZED ALUMINUM.
3. STRUCTURAL UPRIGHTS AND CROSS MEMBERS TO BE CLEAR ANODIZED ALUMINUM WITH OPTION OF BRONZE OR BLACK.
4. \* THIS SHELTER IS ERRECTED ON SITE BY CUSTOMER.



PAINT COLOR: (PLEASE SPECIFY COLOR)		GENERAL NOTES	
PI#	SCALE	DRAWN BY	REVISED
DATE	NTS	DLT	3-14-2007
7-25-2000		SIZE	QTY
CHK'D BY:		4' X 12'	SALES REPRESENTATIVE

DWG# STS20 SHEET A-1  
 4' X 12' TRANSIT SHELTER  
 MODEL STS124  
 PAR-KUT INTERNATIONAL, INC.  
 40961 Production Drive  
 Fairport Twp, Mich.  
 48045-1551  
 Ph. (586) 468-2947

NOTE: THIS PRINT AND DESIGN ARE THE PROPERTY OF PAR-KUT INTERNATIONAL, INC. AND MUST NOT BE REPRODUCED OR COPIED IN ANY MANNER WITHOUT THE WRITTEN CONSENT OF PAR-KUT INTERNATIONAL, INC. IT SHALL BE USED ONLY AS A MEANS OF REFERENCE TO PAR-KUT DESIGNED AND FURNISHED BY PAR-KUT. PAR-KUT RESERVES THE RIGHT TO MAKE CHANGES TO DESIGN FOR ENGINEERING PURPOSES WITHOUT NOTICE. REVISIONS MAY NOT BE NOTED.