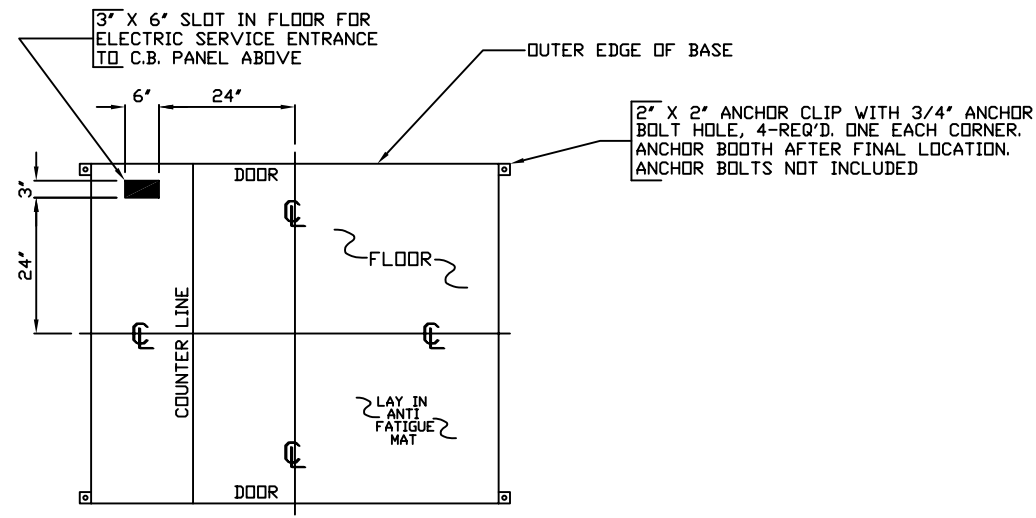


NOTE: CONTRACTOR TO ASSURE 8'-9" CLEARANCE FOR BOOTH INSTALLATION. THIS BOOTH IS DESIGNED FOR INTERIOR/SHELTERED USE AND NOT INTENDED FOR PERMANENT EXPOSURE TO PRECIPITATION

APPROVED BY: _____

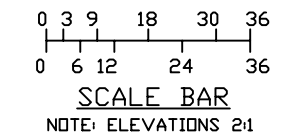
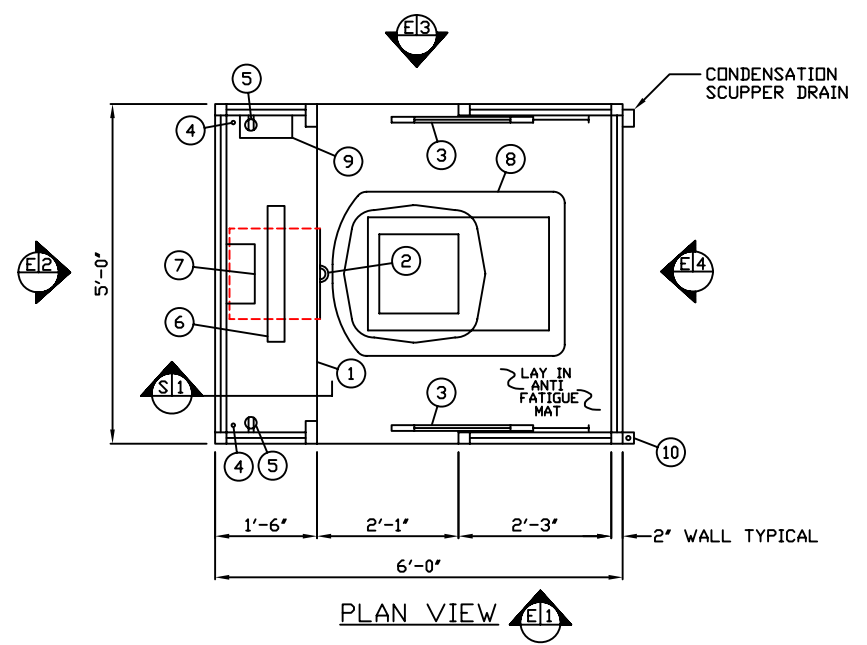


NOTE: PROVIDE 120/208V. 1Ø-3 WIRE SERVICE WITH GROUND. SERVICE ENTRANCE/ANCHOR BOLT LAYOUT

1. COUNTER- 18" DEEP GALVANIZED STEEL WITH 1/2" PARTICLE AND PLASTIC LAMINATE TOP AND EDGE.
2. PAINTED STORAGE DRAWER BENEATH COUNTER.
3. DOOR- 25" WIDE, SLIDING ALUMINUM WITH WEATHER-STRIPPING, BALL BEARING HANGERS, SAFETY GLAZING, HEAVY DUTY TRACK, LOCK, & HARDWARE, 2-REQ'D.
4. 1-1/4" HOLE IN COUNTER FOR DROP CORDS TO OUTLET, 2-REQ'D.
5. DUPLEX OUTLET- MOUNTED BELOW COUNTER, 2-REQ'D.
6. LIGHT- 20 WATT LAMP FLUORESCENT LIGHT FIXTURE WITH SWITCH ATTACHED.
7. HEATER- 120V./1,500 WATT FAN FORCED WITH INTEGRAL THERMOSTAT CONTROL.
8. AIR CONDITIONER- 120V./13,500 BTU ROOF MOUNTED WITH INTEGRAL THERMOSTAT CONTROL.
9. C.B. PANEL- 12 SPACE 120/208V. 1Ø-3 WIRE WITH GROUND BAR. MAIN BREAKER NOT INCLUDED.
10. ANCHOR CLIP- 2" X 2" STEEL WELDED TO BASE AT GRADE WITH 3/4" ANCHOR BOLT HOLE. 4-REQ'D. ANCHOR BOOTH AFTER FINAL LOCATION. ANCHOR BOLTS NOT INCLUDED.

NOTE: PAR-KUT BOOTHS ARE OF SINGLE UNIT WELDED GALVANIZED STEEL CONSTRUCTION, FACTORY ASSEMBLED AND DELIVERED SET UP. FAILURE TO SECURELY ANCHOR BOOTH MAY RESULT IN OVERTURNING OF UNIT AND SERIOUS INJURY TO OCCUPANT.

- A. GLAZING TO BE 1/4" CLEAR TEMPERED SAFETY GLASS SET IN PAINTED ALUMINUM WINDOW FRAMES. OPERATING WINDOWS WILL BE PROVIDED WITH INSECT SCREENS.
- B. PAINT- A RUST INHIBITIVE EPOXY PRIMER WITH INDUSTRIAL ENAMEL FINISH. (PLEASE SPECIFY COLOR)
- C. ELECTRICAL- ALL WIRING BY PAR-KUT TO BE #12(MIN) STRANDED COPPER, THHN ENCLOSED IN 1/2"(MIN) E.M.T. PER NATIONAL ELECTRIC CODE. FITTINGS, FIXTURES & DEVICES ARE U.L. LABELED. ALL WIRING TO TERMINATE AT C.B. PANEL. ALL CIRCUITS HAVE GREEN GROUND WIRE.
- D. BOOTH WILL NOT HAVE A CANOPY OVERHANG.
- E. BOOTH COUNTER TO HAVE 1/2" PARTICAL BOARD AND PLASTIC LAMINATE TOP AND EDGE.
- F. LIFTING RING(S) ARE PROVIDED IN ROOF.
- G. NO ON SITE WORK BY PAR-KUT.



NOTE: THIS PRINT AND DESIGN ARE THE PROPERTY OF PAR-KUT INTERNATIONAL, INC. IT MUST NOT BE REPRODUCED IN ANY MANNER, NOR SHALL IT BE SUBMITTED TO OUTSIDE PARTIES FOR EXAMINATION WITHOUT OUR CONSENT. IT SHALL BE USED ONLY AS A MEANS OF REFERENCE TO WORK DESIGNED AND FURNISHED BY PAR-KUT. PAR-KUT RESERVES THE RIGHT TO MAKE CHANGES TO DESIGN FOR ENGINEERING PURPOSES WITHOUT NOTICE. REVISIONS MAY NOT BE NOTED.

PAR-KUT INTERNATIONAL, INC.
40961 Production Drive
Harrison Twp, Mich.
48045-1351
PH. (810) 468-2947

DWG# STD-004 SHEET A-1

| | |
|--------------------------------|--|
| A/E NOTES | |
| ENAMEL COLOR: _____ | |
| PLASTIC LAMINATE CHOICE: _____ | |
| LAY IN ANTI FATIGUE MAT | |

| | | |
|------------------------|----------------------|---------|
| 5' X 6' STANDARD BOOTH | | |
| SCALE NTS | DRAWN BY AJP | REVISED |
| DATE 12-9-98 | SIZE 5' X 6' | QTY |
| CHK'D BY: | SALES REPRESENTATIVE | |