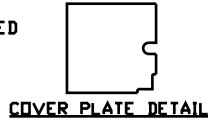
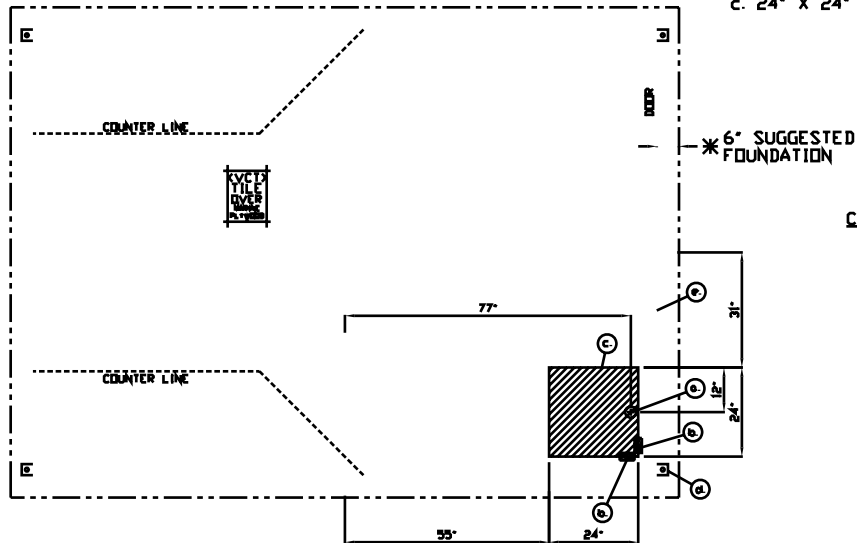


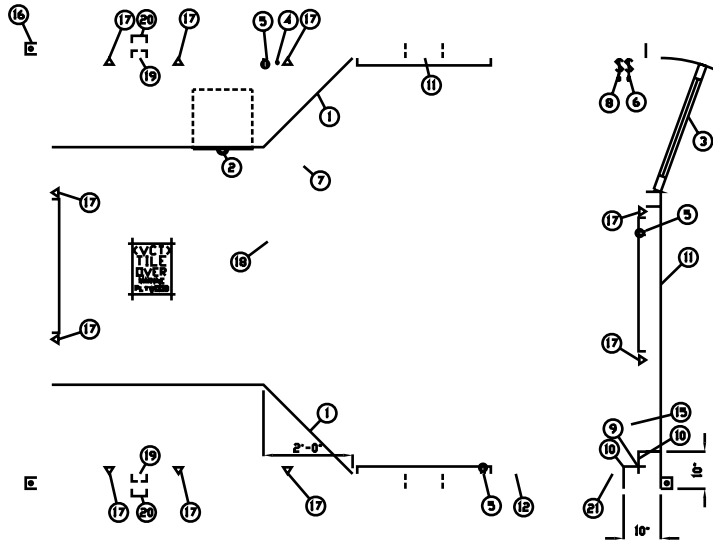
d. 3" HOLE IN REMOVABLE COVER UNDER CIRCUIT BREAKER PANEL.

c. 24" x 24" REMOVABLE SCREW COVER PLATE



5. 20 AMP DUPLEX OUTLET- MOUNTED BELOW COUNTER, 9-REO'D.
6. DIMMER SWITCH FOR ONE ROW OF INTERIOR INCANDESCENT DOWN LIGHTS.
8. DIMMER SWITCH FOR ONE ROW OF INTERIOR INCANDESCENT DOWN LIGHTS.
9. 2" x 2" POST.
10. 4000 SERIES WIRE MOLD WITH COVER THRU FLOOR TO ABOVE CEILING, 2-REO'D.
11. BULLET RESISTING SIDE SLIDING ACCESS PORT 10" x 10", 4-REO'D.
12. DIGITAL WALL MOUNTED THERMOSTAT CONTROL FOR HVAC ROOF MOUNTED UNIT.
13. DISCONNECT SWITCH 240 VOLT FOR HVAC UNIT.
14. HVAC UNIT ROOF MOUNTED CARRIER 18,000 BTU WITH 10 KW HEAT. C.B. PANEL- GE #TL4020C 40 SPACE 120/240V. 1Ø-3 WIRE WITH GROUND BAR. MAIN LUG ONLY. PAR-KUT INSTALLS BRANCH BREAKERS FOR ALL FACTORY INSTALLED BOOTH ELECTRICAL EQUIPMENT, INCLUDING INTERIOR AND EXTERIOR LIGHT FIXTURES, HVAC, ELECTRIC RECEPTACLES AND INTERCOMS. 6 SPARE SINGLE POLE 20 AMP BREAKERS ARE INCLUDED.

17. 2" x 4" JUNCTION BOX FOR FUTURE COMMUNICATION, DATA, ECT. MOUNTED 18" ABOVE FINISH FLOOR WITH 3/4" CONDUIT TO STUB ABOVE CEILING TILE, 1Ø-REO'D.
18. GROUND FAULT INTERRUPT RECEPTACLE MOUNTED ON ROOF FOR HVAC UNIT.
19. 4" x 4" JUNCTION BOX MOUNTED ON INTERIOR WALL FOR INTERCOM WITH 3/4" RACEWAY TO JUNCTION BOX ITEM #20 AND TO JUNCTION BOX ITEM #21.
20. 4" x 4" WEATHER PROOF JUNCTION BOX MOUNTED ON EXTERIOR WALL WITH RACEWAY TO ITEM #20. PROTECT RACEWAY SO NOT TO COMPROMISE THE BULLET RESISTANT INTEGRITY.
21. JUNCTION BOX WITH COVER MOUNTED IN HEADER ABOVE TILE CEILING NEAR WIRE MOLD WITH 3/4" CONDUIT RACEWAY THROUGH ROOF TO A WEATHERPROOF JUNCTION BOX FOR INTERCOM SPEAKERS (2 ONE EACH SIDE) BY OTHERS.

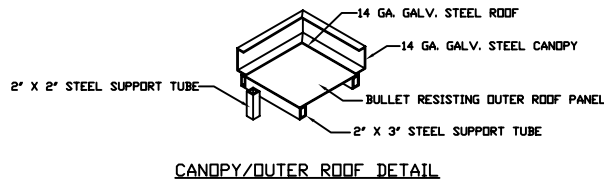
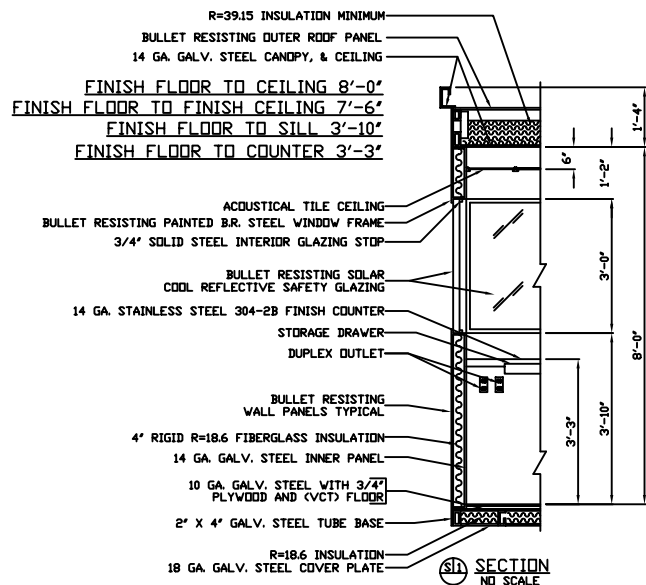
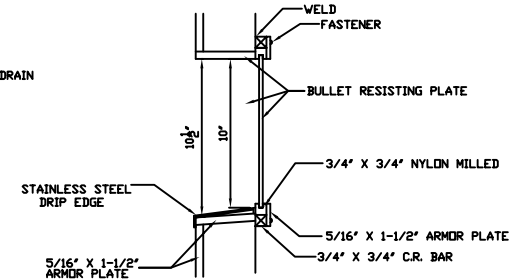
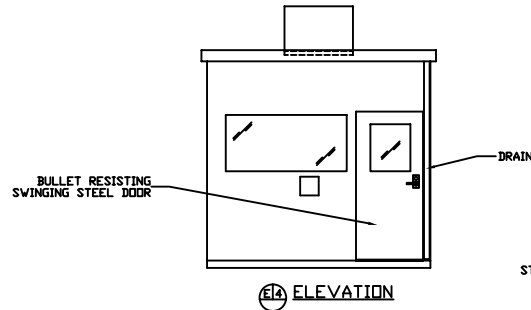
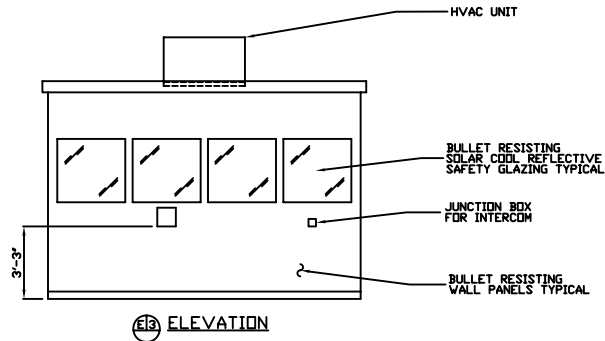
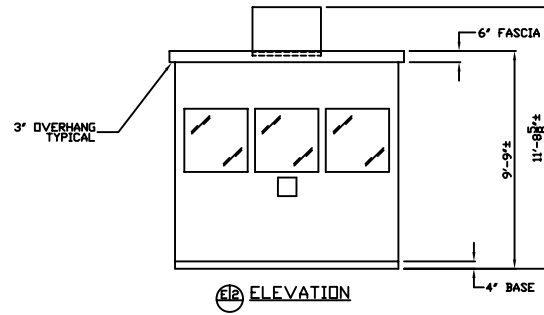
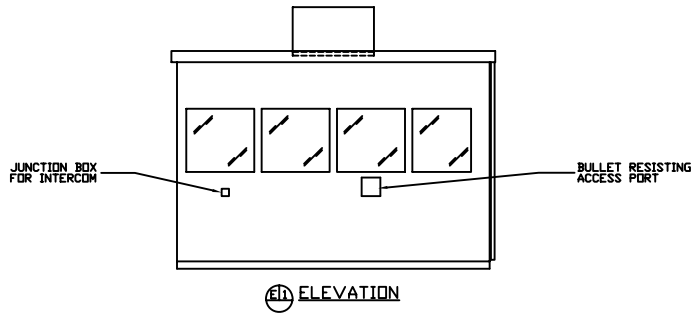


G. EXTERIOR PLATE AND GLAZING SHALL MEET U.L. 752 BULLET RESISTING LEVEL 8 CLASSIFICATION.

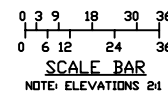
NOTE: FLOOR, CANOPY, FASCIA, SOFFIT, AND HVAC UNIT ARE NOT BULLET RESISTING.

WHITE

* FIELD WORK
* CONCRETE FOUNDATION
* ANCHORING UNIT IN PLACE
* ELECTRICAL CONNECTION TO SERVICE PANEL
* GROUNDING ELECTRODE
* ANCHOR BOLTS
* INSTALLATION OF ALL PLUMBING PIPE, FITTING AND FIXTURES
* PIPE & FITTING PROVIDE BY OTHERS



NOTE: FLOOR, CANOPY, FASCIA, SOFFIT, AND HVAC UNIT ARE NOT BULLET RESISTING.



- * FIELD WORK**
- * CONCRETE FOUNDATION
 - * ANCHERING UNIT IN PLACE
 - * ELECTRICAL CONNECTION TO SERVICE PANEL
 - * GROUNDING ELECTRODE
 - * ANCHOR BOLTS
 - * INSTALLATION OF ALL PLUMBING PIPE, FITTING AND FIXTURES
 - * PIPE & FITTING PROVIDE BY OTHERS

NOTE: THIS PRINT AND DESIGN ARE THE PROPERTY OF PARK-KUT INTERNATIONAL, INC. IT MUST NOT BE REPRODUCED IN ANY MANNER, NOR SHALL IT BE SUBMITTED TO OUTSIDE PARTIES FOR EXAMINATION WITHOUT OUR CONSENT. IT SHALL BE USED ONLY AS A MEANS OF REFERENCE TO WORK DESIGNED AND FURNISHED BY PARK-KUT. PARK-KUT RESERVES THE RIGHT TO MAKE CHANGES TO DESIGN FOR ENGINEERING PURPOSES WITHOUT NOTICE. REVISIONS MAY NOT BE NOTED.

PARK-KUT INTERNATIONAL, INC.
40961 Production Drive
Harrison Twp., Mich.
48045-1551
PK (CID) 468-2947



DWG# SEC-004 SHEET A-2

SEC-004

SCALE	NTS	DRAWN BY	AJP	REVISED	7-1-2002
DATE	6-7-2002	SIZE	10' X 14'	QTY	1
CHK'D BY:		SALES REPRESENTATIVE	TOM DUEHLING		