

NOTICE: MAXIMUM SAFE TOWING SPEED -- 25 MPH
NOT DESIGNED FOR HIGHWAY USE!

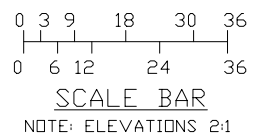
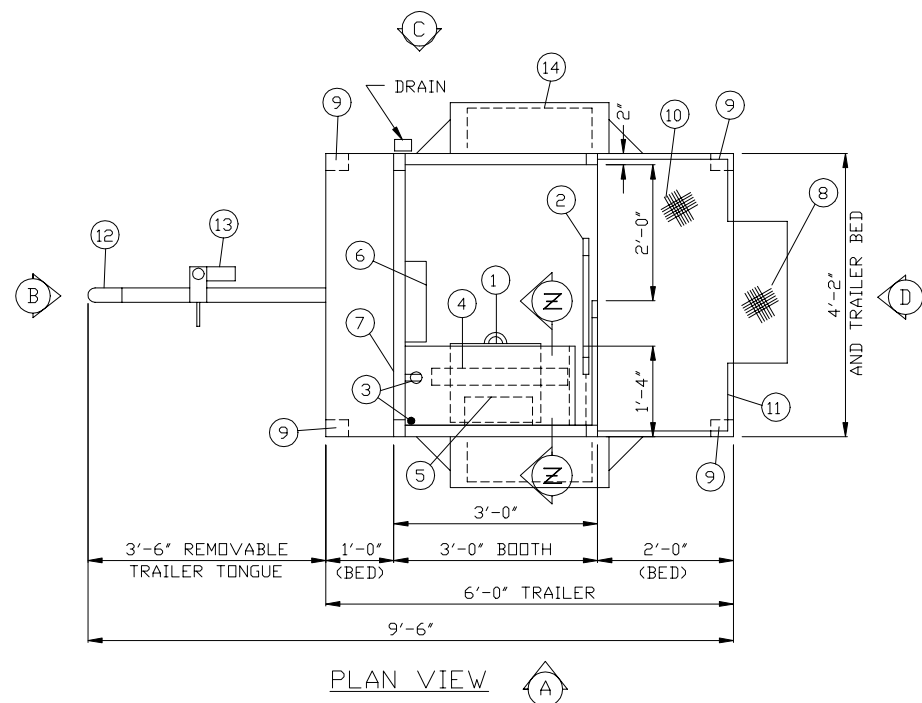
1. 16" DEEP STEEL COUNTER WITH STORAGE DRAWER BENEATH.
2. 24" WIDE SLIDING ALUMINUM DOOR WITH SAFETY GLAZING, WEATHERSTRIPPING, LOCK & HARDWARE.
3. 110V. DUPLEX OUTLET WITH 1-1/4" HOLE IN COUNTER FOR CORDS.
4. 20W. LAMP FLUORESCENT LIGHT FIXTURE WITH LAMP AND SWITCH ATTACHED.
5. 120V./1500W. FAN FORCED HEATER WITH INTEGRAL THERMOSTAT CONTROL.
6. 100AMP RATED CIRCUIT BREAKER PANEL WITH GROUND BAR, MAIN BREAKER INCLUDED.
7. #10/3 AWG 10 FOOT POWER CORD WITH TWIST LOCK MALE CORD CAP FOR ELECTRICAL HOOK-UP.

NOTE: THE FOLLOWING ITEMS MAKE UP HEAVY DUTY TRAILER:

8. GRIP STRUT FOLD DOWN STEP.
9. LEVELING JACK, 4-REQ'D.
10. 12GA. GALV. 4-WAY DIAMOND PLATE STEEL TRAILER BED.
11. 1" X 1" SAFETY RAILS.
12. 2" BALL COUPLER.
13. REMOVABLE TONGUE WITH TONGUE JACK AND SAFETY CHAINS.
14. 13" TIRES, 2-REQ'D.

NOTE: PAR-KUT BOOTHS ARE OF SINGLE UNIT WELDED GALVANIZED STEEL CONSTRUCTION, FACTORY ASSEMBLED AND DELIVERED SET UP.

- A. ALL GLAZING TO BE CLEAR TEMPERED SAFETY GLASS, SET IN MILL FINISH ALUMINUM WINDOW FRAMES.
- B. BOOTH TO BE PAINTED WITH RUST INHIBITIVE EPOXY PRIMER WITH AN INDUSTRIAL ENAMEL FINISH.
- C. ALL WIRING BY PAR-KUT TO BE #12(MIN) STRANDED COPPER, THHN ENCLOSED IN 1/2"(MIN) E.M.T. PER NATIONAL ELECTRIC CODE. FITTINGS, FIXTURES AND DEVICES ARE U.L. LISTED. ALL WIRING TO TERMINATE AT POWER CORD. ALL CIRCUITS HAVE GREEN GROUND WIRE.
- D. CANOPY OVERHANG TO BE 3" ON ALL SIDES.
- E. TRAILER PAINTED BLACK.
- F. LIFTING RING(S) PROVIDED IN ROOF.
- G. NO ON SITE WORK BY PAR-KUT.



NOTE: THIS PRINT AND DESIGN ARE THE PROPERTY OF PAR-KUT INTERNATIONAL, INC. IT MUST NOT BE REPRODUCED IN ANY MANNER, NOR SHALL IT BE SUBMITTED TO OUTSIDE PARTIES FOR EXAMINATION WITHOUT OUR CONSENT. IT SHALL BE USED ONLY AS A MEANS OF REFERENCE TO WORK DESIGNED AND FURNISHED BY PAR-KUT. PAR-KUT RESERVES THE RIGHT TO MAKE CHANGES TO DESIGN FOR ENGINEERING PURPOSES WITHOUT NOTICE. REVISIONS MAY NOT BE NOTED.

PAR-KUT INTERNATIONAL, INC.
40961 Production Drive
Harrison Twp, Mich.
48045-1351
PH. (810) 468-2947



DWG# 0001 SHEET A-1

#43TLR

A/E NOTES		
PAINT COLOR: _____		

SCALE NTS	DRAWN BY JPS / DLT	REVISED
DATE 7-25-2000	SIZE 3' X 4'-2"	QTY
CHK'D BY:	SALES REPRESENTATIVE	