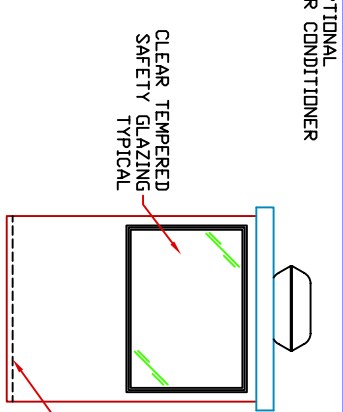
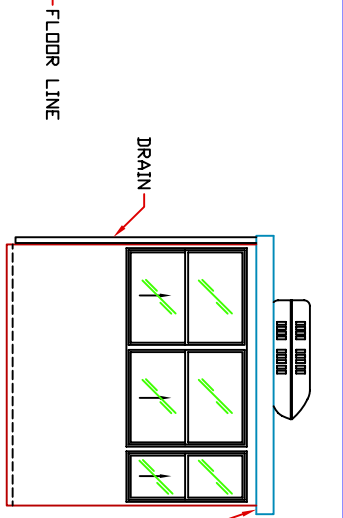


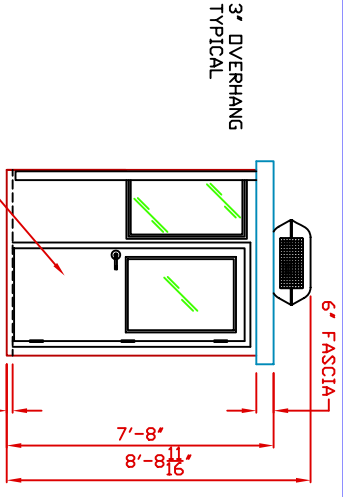
E1 ELEVATION



E2 ELEVATION



E3 ELEVATION

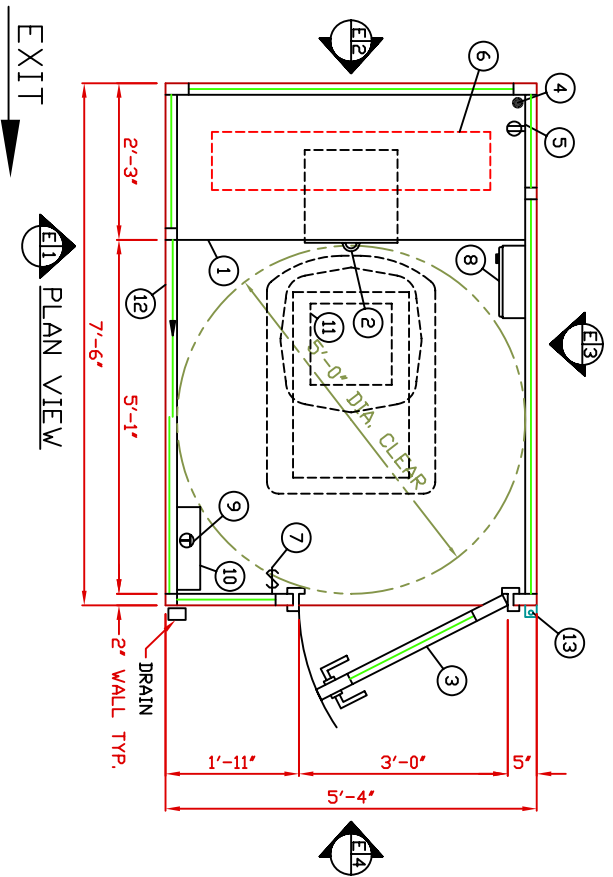


E4 ELEVATION

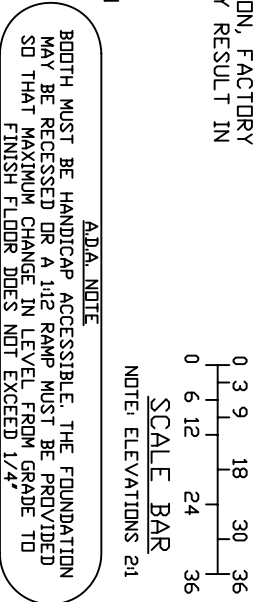
1. COUNTER- 25' DEEP PAINTED GALVANIZED STEEL.
2. PAINTED STORAGE DRAWER BENEATH COUNTER.
3. DDDR- 36" WIDE, SLIDING STEEL WITH WEATHER-STRIPPING, BALL BEARING HANGERS, SAFETY GLAZING, HEAVY DUTY TRACK, LOCK, & HARDWARE.
4. HOLE IN COUNTER FOR DROP CORDS TO OUTLET.
5. DUPLEX OUTLET- MOUNTED BELOW COUNTER.
6. FLUORESCENT LIGHT FIXTURE.
7. LIGHT SWITCH FOR INTERIOR. LIGHT ITEM #6.
8. FAN FORCED HEATER WITH INTEGRAL THERMOSTAT CONTROL.
9. THERMOSTAT CONTROL FOR ROOF MOUNTED AIR CONDITIONER.
10. CIRCUIT BREAKER PANEL, MAIN BREAKER IS INCLUDED.
11. OPTIONAL AIR CONDITIONER- 120V/13,500 BTU ROOF MOUNTED WITH WALL MOUNTED THERMOSTAT.
12. CASHIER WINDOW.
13. ANCHOR CLIP- 2' X 2' X 1/4" MIN. STEEL WELDED TO BASE AT GRADE WITH 3/4" ANCHOR BOLT HOLE.

NOTE: PAR-KUT BOOTHS ARE OF SINGLE UNIT WELDED GALVANIZED STEEL CONSTRUCTION, FACTORY ASSEMBLED AND DELIVERED SET UP. FAILURE TO SECURELY ANCHOR BOOTH MAY RESULT IN OVERTURNING OF UNIT AND SERIOUS INJURY TO OCCUPANT.

- A. SAFETY GLAZING TO BE SET IN ANODIZED ALUMINUM WINDOW FRAMES.
- B. PAINT- A RUST INHIBITIVE PRIMER WITH AN INDUSTRIAL FINISH.
- C. ELECTRICAL- ALL WIRING BY PAR-KUT TO BE #12(MIN) STRANDED COPPER, THHN ENCLOSED IN 1/2"(MIN) E.M.T. PER NATIONAL ELECTRIC CODE. FITTINGS, FIXTURES & DEVICES ARE U.L. LABELED. ALL WIRING TO TERMINATE AT C.B. PANEL. ALL CIRCUITS HAVE GREEN GROUND WIRE.
- D. BOOTH WILL HAVE A 3' CANOPY OVERHANG ON ALL SIDES.
- E. LIFTING RINGS ARE PROVIDED IN ROOF.
- F. NO ON SITE WORK BY PAR-KUT.

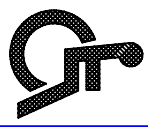


EXIT PLAN VIEW



SCALE BAR
NOTE: ELEVATIONS 21

ADDA. NOTE
BOOTH MUST BE HANDICAP ACCESSIBLE. THE FOUNDATION MAY BE RECESSED OR A 1/2 RAMP MUST BE PROVIDED SO THAT MAXIMUM CHANGE IN LEVEL FROM GRADE TO FINISH FLOOR DOES NOT EXCEED 1/4"



NOTE: THIS PRINT AND DESIGN ARE THE PROPERTY OF PAR-KUT INTERNATIONAL, INC. AND MUST NOT BE REPRODUCED OR TRANSMITTED IN ANY FORM OR BY ANY MEANS, ELECTRONIC OR MECHANICAL, INCLUDING PHOTOCOPYING, RECORDING, OR BY ANY INFORMATION STORAGE AND RETRIEVAL SYSTEM. PERMISSION TO REPRODUCE THIS DOCUMENT FOR EXAMINATION WITHOUT OUR CONSENT IT SHALL BE USED ONLY AS A MEANS OF REFERENCE TO PAR-KUT DESIGNED AND FURNISHED BY PAR-KUT. PAR-KUT RESERVES THE RIGHT TO MAKE CHANGES TO DESIGN FOR ENGINEERING PURPOSES WITHOUT NOTICE. REVISIONS MAY NOT BE NOTED.

PAR-KUT INTERNATIONAL, INC.
40961 Production Drive
Harrison Twp, Mich.
48045-1551
Ph. (586) 468-2947

DWG# PK75HCRA SHEET A-1
STANDARD 5'-4" X 7'-6"
BARRIER FREE BOOTH
MODEL 75HCRA

SCALE: DRAWN BY: REVISED
NTS: DLT 8-30-2005
DATE: 8-2-2002 SIZE: 5'-4" X 7'-6" QTY:
CHK'D BY: SALES REPRESENTATIVE

PAINT COLOR: A/E NOTES
(PLEASE SPECIFY COLOR)