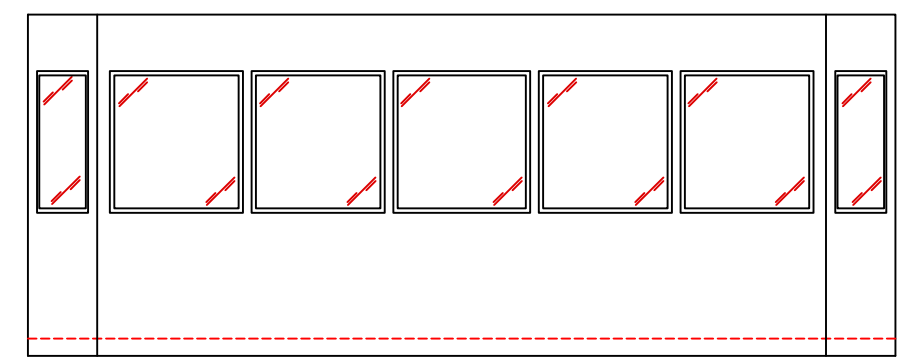


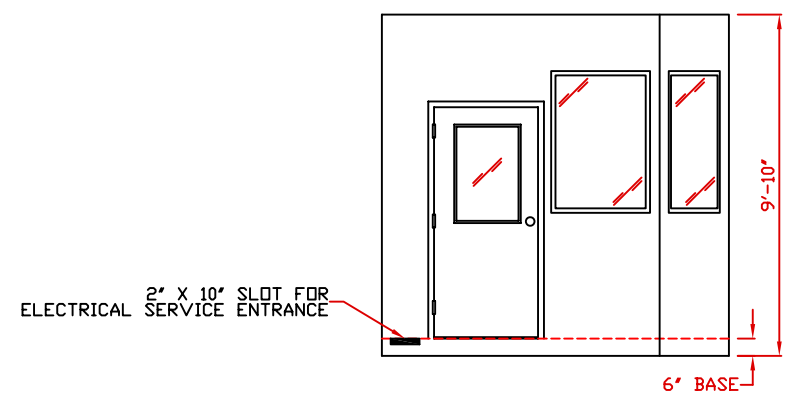
1. COUNTER- 30" DEEP GALVANIZED STEEL WITH PLASTIC LAMINATE MOUNTED 28-1/2" ABOVE FLOOR.
2. 2" X 8" CABLE TROUGH MOUNTED BENEATH COUNTER.
3. DOOR- 36" WIDE, SWINGING STEEL WITH WEATHER-STRIPPING, BALL BEARING BUTTS, SAFETY GLAZING, HYDRAULIC CLOSER, KEY IN KNOB LOCK, AND HARDWARE, 2-REQ'D.
4. HOLE IN COUNTER FOR DROP CORDS, 6-REQ'D.
- 5a. DUPLEX OUTLETS MOUNTED 20" ABOVE FLOOR WIRED TO CIRCUIT #1 IN THE 'UPS' LABELED C.B. PANEL ITEM #18, 2-REQ'D.
- 5b. DUPLEX OUTLETS MOUNTED 20" ABOVE FLOOR WIRED TO CIRCUIT #2 IN THE 'UPS' LABELED C.B. PANEL ITEM #18, 2-REQ'D.
- 5c. DUPLEX OUTLETS MOUNTED 20" ABOVE FLOOR WIRED TO CIRCUIT #3 IN THE 'UPS' LABELED C.B. PANEL ITEM #18, 2-REQ'D.
- 5d. DUPLEX OUTLETS MOUNTED 20" ABOVE FLOOR WIRED TO CIRCUIT #4 IN THE 'UPS' LABELED C.B. PANEL ITEM #18.
- 5e. DUPLEX OUTLETS MOUNTED 20" ABOVE FLOOR WIRED TO CIRCUIT #5 IN THE 'UPS' LABELED C.B. PANEL ITEM #18.
6. DUPLEX OUTLETS MOUNTED 20" ABOVE FLOOR WIRED TO 'HOUSE' LABELED C.B. PANEL ITEM #17, 5-REQ'D.
7. 4-40 WATT FLUORESCENT LIGHT FIXTURE WITH ACRYLIC LENS, 4-REQ'D.
- 8a. 3-WAY LIGHT SWITCH FOR TWO BULBS IN EACH LIGHT FIXTURE ITEM #7, 2-REQ'D.
- 8b. 3-WAY LIGHT SWITCH FOR TWO BULBS IN EACH LIGHT FIXTURE ITEM #7, 2-REQ'D.
9. 75 WATT SURFACED MOUNTED INCANDESCENT LIGHT, 9-REQ'D.
10. DIMMER SWITCH FOR ITEM #9, 2-REQ'D.
11. C.B. PANEL- 12 SPACE 120/240V 1Ø-3 WIRE WITH GROUND. 100 AMP MAIN BREAKER IS INCLUDED. WITH LABEL 'HOUSE'.
12. C.B. PANEL- 12 SPACE 120/240V 1Ø-3 WIRE WITH GROUND. 100 AMP MAIN BREAKER IS INCLUDED. WITH LABEL 'UPS'.

NOTE: PAR-KUT BOOTHS ARE OF SINGLE UNIT WELDED GALVANIZED STEEL CONSTRUCTION, FACTORY ASSEMBLED AND DELIVERED SET UP. FAILURE TO SECURELY ANCHOR BOOTH MAY RESULT IN OVERTURNING OF UNIT AND SERIOUS INJURY TO OCCUPANT.

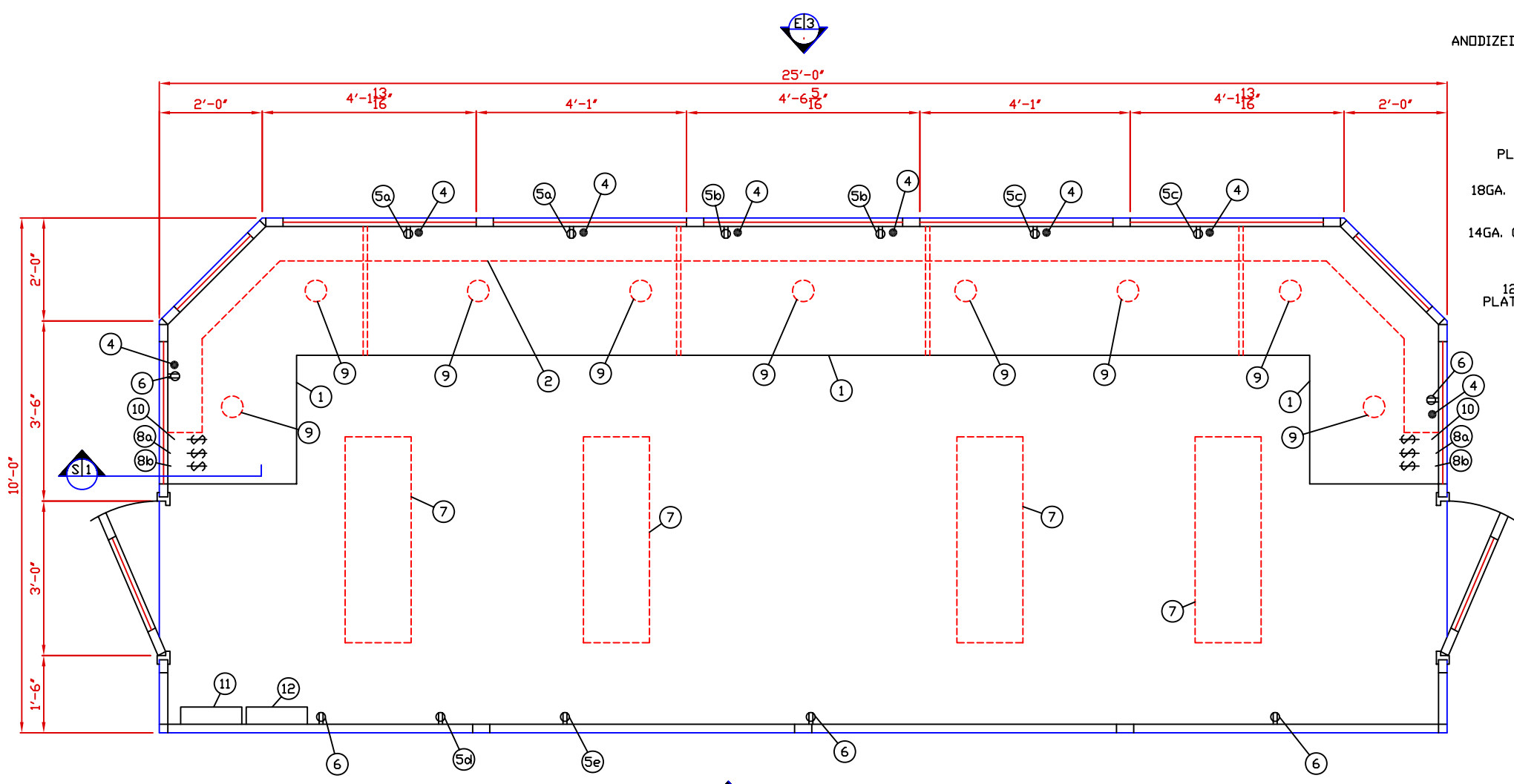
- A. GLAZING- 1/4" CLEAR TEMPERED SAFETY GLAZING TO BE SET IN PAINTED STEEL EXTERIOR WINDOW FRAMES WITH REMOVABLE ANODIZED ALUMINUM INTERIOR GLAZING STOPS.
- B. PAINT- A RUST INHIBITIVE PRIMER WITH AN INDUSTRIAL FINISH.
- C. ELECTRICAL- ALL WIRING BY PAR-KUT TO BE #12(MIN) STRANDED COPPER, THHN ENCLOSED IN 1/2"(MIN) E.M.T. PER NATIONAL ELECTRIC CODE. FITTINGS, FIXTURES, AND DEVICES ARE UL LABELED, ETL LISTED. ALL WIRING TO TERMINATE AT C.B. PANEL. ALL CIRCUITS HAVE GREEN GROUND WIRE.
- D. BOOTH WILL NO CANOPY OVERHANG ON ANY SIDE.
- E. LIFTING RING(S) ARE PROVIDED IN ROOF.
- F. NO ON SITE WORK BY PAR-KUT.



E3 ELEVATION

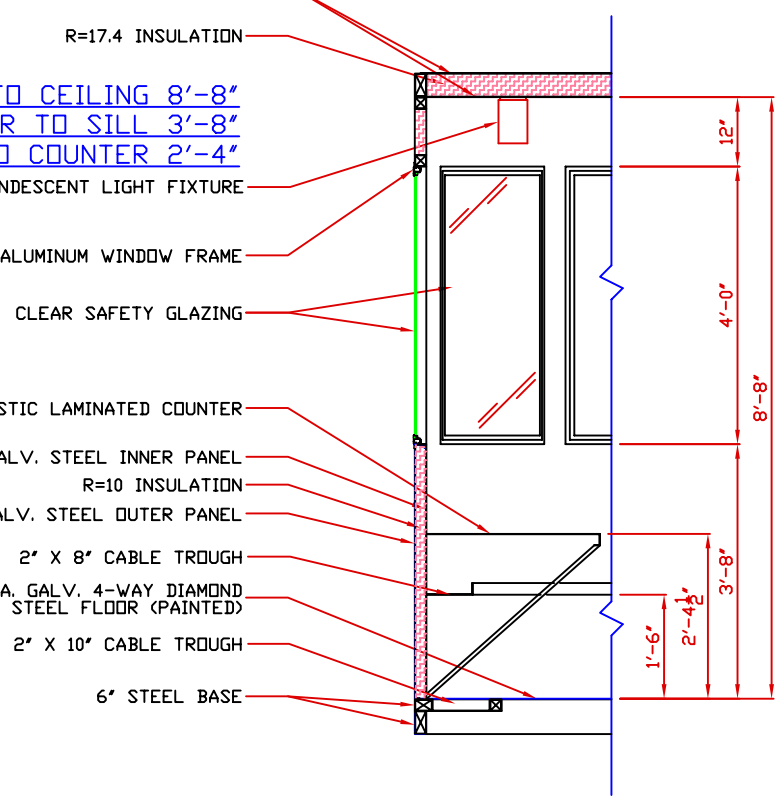


E4 ELEVATION



E1 PLAN VIEW

- 14GA. GALV. STEEL ROOF AND CEILING
- R=17.4 INSULATION
- FLOOR TO CEILING 8'-8"
- FLOOR TO SILL 3'-8"
- FLOOR TO COUNTER 2'-4"
- 75 WATT INCANDESCENT LIGHT FIXTURE
- ANODIZED ALUMINUM WINDOW FRAME
- CLEAR SAFETY GLAZING
- PLASTIC LAMINATED COUNTER
- 18GA. GALV. STEEL INNER PANEL
- R=10 INSULATION
- 14GA. GALV. STEEL OUTER PANEL
- 2" X 8" CABLE TROUGH
- 12GA. GALV. 4-WAY DIAMOND PLATE STEEL FLOOR (PAINTED)
- 2" X 10" CABLE TROUGH
- 6" STEEL BASE



S1 SECTION
NO SCALE

NOTE: THIS PRINT AND DESIGN ARE THE PROPERTY OF PAR-KUT INTERNATIONAL, INC. IT MUST NOT BE REPRODUCED IN ANY MANNER, NOR SHALL IT BE SUBMITTED TO OUTSIDE PARTIES FOR EXAMINATION WITHOUT OUR CONSENT. IT SHALL BE USED ONLY AS A MEANS OF REFERENCE TO WORK DESIGNED AND FURNISHED BY PAR-KUT. PAR-KUT RESERVES THE RIGHT TO MAKE CHANGES TO DESIGN FOR ENGINEERING PURPOSES WITHOUT NOTICE. REVISIONS MAY NOT BE NOTED.

PAR-KUT INTERNATIONAL, INC.
40961 Production Drive
Harrison Twp, Mich.
48049-1351
PH. (586) 468-2947

DWG# PSQ-005 SHEET A-1

10' X 25' CUSTOM BOOTH

GENERAL NOTES		
PAINT COLOR: (PLEASE SPECIFY COLOR)		
SCALE NTS	DRAWN BY NSG	REVISED
DATE	SIZE 10' X 25'	QTY
CHK'D BY:	SALES REPRESENTATIVE	