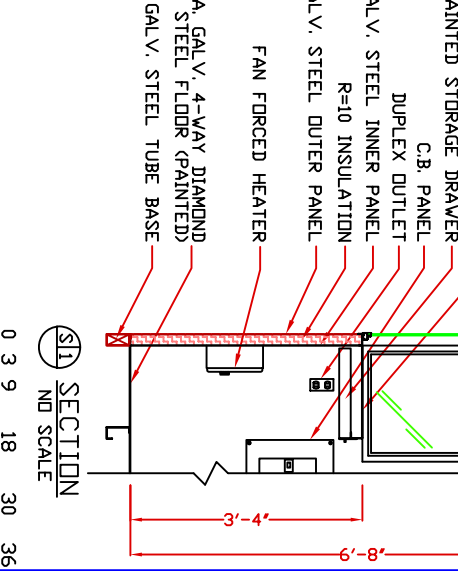
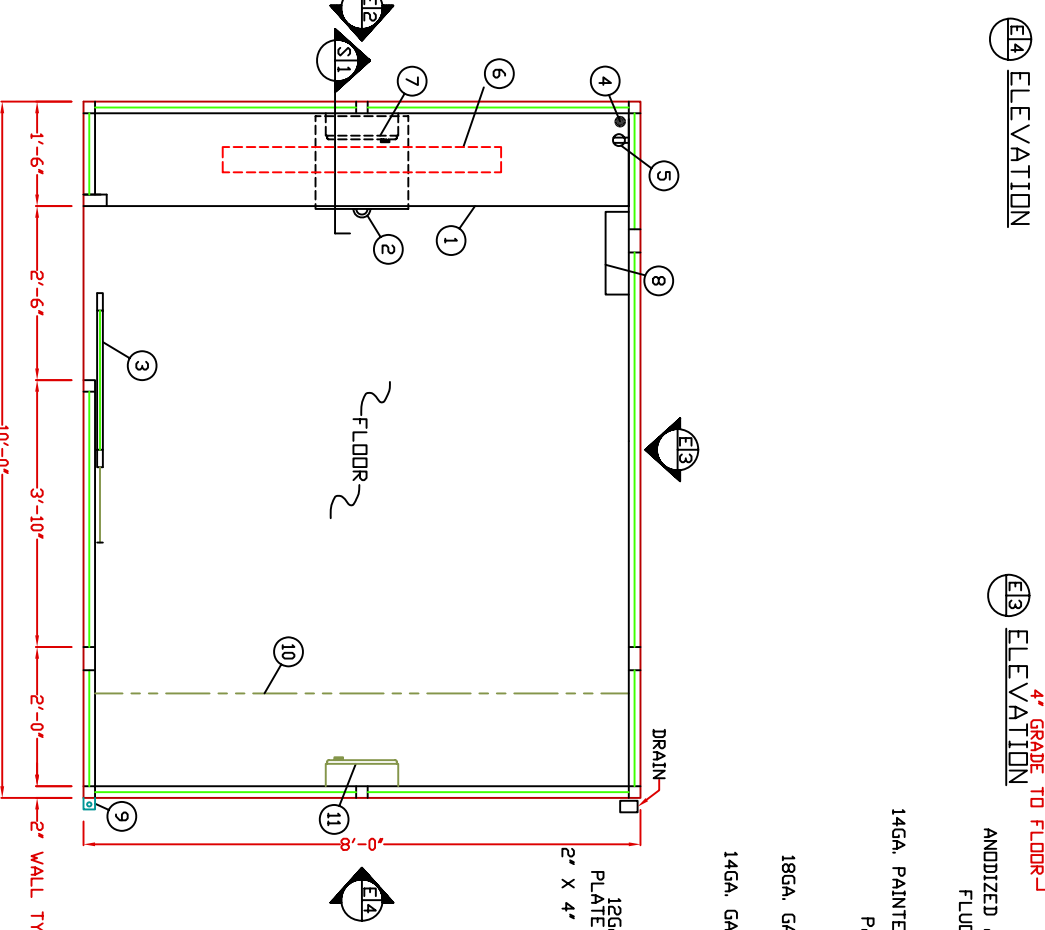


- COUNTER- 18" DEEP PAINTED GALVANIZED STEEL MOUNTED AT SILL.
- PAINTED STORAGE DRAWER BENEATH COUNTER. DOOR- 30" WIDE, SLIDING ALUMINUM WITH WEATHER-STRIPPING, BALL BEARING HANGERS, HEAVY DUTY TRACK, PAINTED STEEL KICK PANEL, SAFETY GLAZING, LOCK, AND HARDWARE. HOLE IN COUNTER FOR DROP CORDS.
- DUPLEX OUTLET MOUNTED BELOW COUNTER. FLUORESCENT LIGHT FIXTURE WITH SWITCH ATTACHED.
- HEATER- WALL MOUNTED WITH INTEGRAL THERMOSTAT CONTROL.
- C.B. PANEL- 12 SPACE, 120/240V, 1Ø-3 WIRE WITH GROUND WIRE. 100 AMP MAIN BREAKER INCLUDED.
- ANCHOR CLIP- 2" X 2" X 1/4"(MIN) STEEL ANCHOR CLIP WITH A 3/4" ANCHOR BOLT HOLE, 4-REGD. ONE EACH CORNER, WELDED TO BASE AT GRADE. ANCHOR BOOTH AFTER FINAL LOCATION. ANCHOR BOLTS NOT INCLUDED.
- OPTIONAL COUNTER.
- OPTIONAL HEATER.

- NOTE: PAR-KUT BOOTHS ARE OF SINGLE UNIT WELDED STEEL CONSTRUCTION, FACTORY ASSEMBLED AND DELIVERED SET UP. FAILURE TO SECURELY ANCHOR BOOTH MAY RESULT IN OVERTURNING OF UNIT AND SERIOUS INJURY TO OCCUPANT.
- GLAZING- TEMPERED SAFETY GLAZING SET IN ANODIZED ALUMINUM WINDOW FRAMES. VENT WINDOWS WILL BE PROVIDED INSECT SCREENS.
 - PAINT- A RUST INHIBITIVE PRIMER WITH AN INDUSTRIAL FINISH.
 - ELECTRICAL- ALL WIRING BY PAR-KUT TO BE #12(MIN) STRANDED COPPER, THIN ENCLOSED IN 1/2"(MIN) EMT PER NATIONAL ELECTRIC CODE. FITTINGS, FIXTURES, AND DEVICES ARE UL LABELED. ALL WIRING TO TERMINATE AT C.B. PANEL. ALL CIRCUITS HAVE GREEN GROUND WIRE.
 - BOOTH WILL HAVE A 3' CANOPY OVERRANG ON ALL SIDES.
 - LIFTING RINGS(S) ARE PROVIDED ON ROOF.
 - NO ON SITE WORK BY PAR-KUT.



PAINT COLOR: (PLEASE SPECIFY COLOR)		GENERAL NOTES	
Pt#	SCALE	DRAWN BY	REVISED
DATE	NTS	DLT	2-28-2007
8-2-2002	SIZE	8' X 10'	QTY
CHK'D BY:	SALES REPRESENTATIVE		
DWG#	PK108	SHEET	A-1
STANDARD 8' X 10' BOOTH MODEL 108			
PAR-KUT INTERNATIONAL, INC. 40261 Production Drive Harrison Twp, Mich. 48045-1551 Ph: (586) 468-2947			

NOTE: THIS PRINT AND DESIGN ARE THE PROPERTY OF PAR-KUT INTERNATIONAL, INC. AND MUST NOT BE REPRODUCED OR TRANSMITTED IN ANY FORM OR BY ANY MEANS, ELECTRONIC OR MECHANICAL, INCLUDING PHOTOCOPYING, RECORDING, OR BY ANY INFORMATION STORAGE AND RETRIEVAL SYSTEM, WITHOUT THE WRITTEN PERMISSION OF PAR-KUT INTERNATIONAL, INC. PAR-KUT INTERNATIONAL, INC. RESERVES THE RIGHT TO MAKE CHANGES TO DESIGN FOR ENGINEERING PURPOSES WITHOUT NOTICE. REVISIONS MAY NOT BE NOTED.

NOTE: ELEVATIONS 2:1

SCALE BAR
0 3 9 18 30 36
0 6 12 24 36