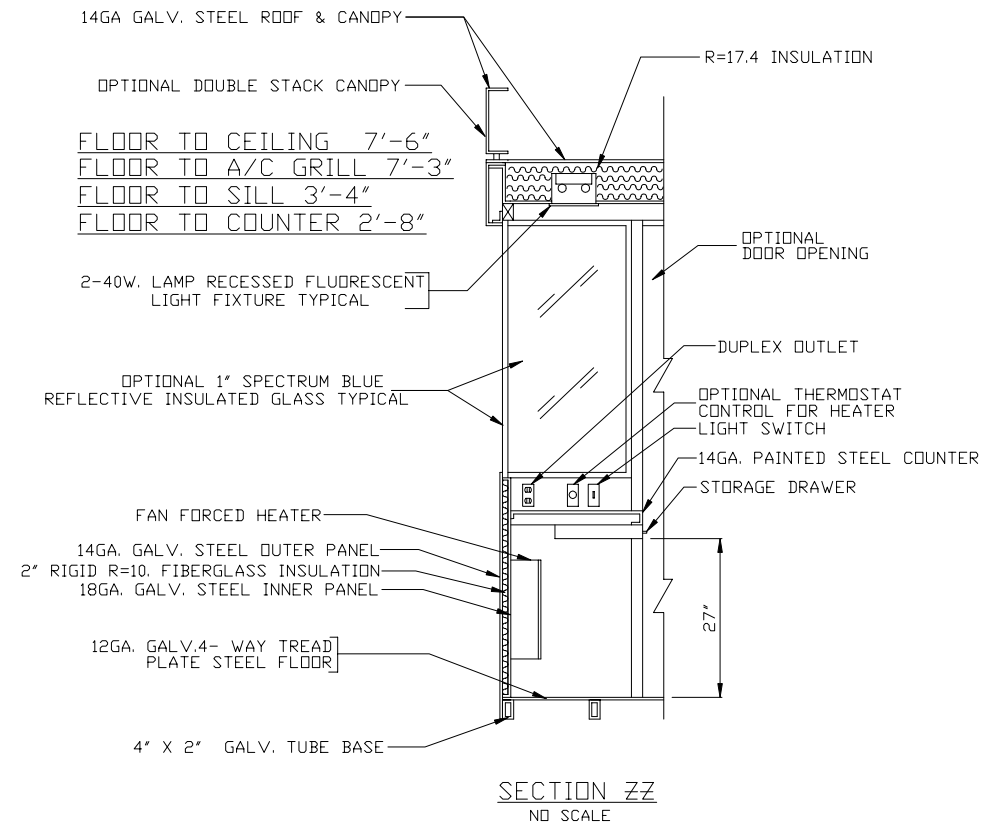


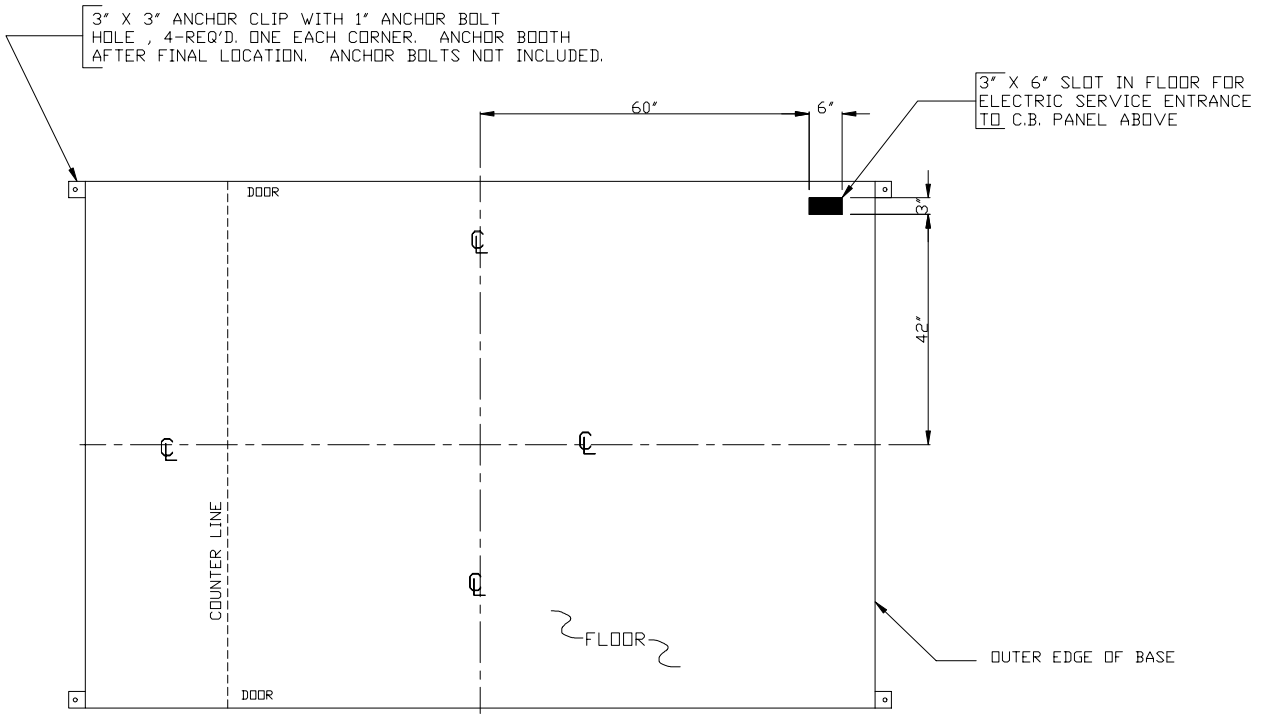
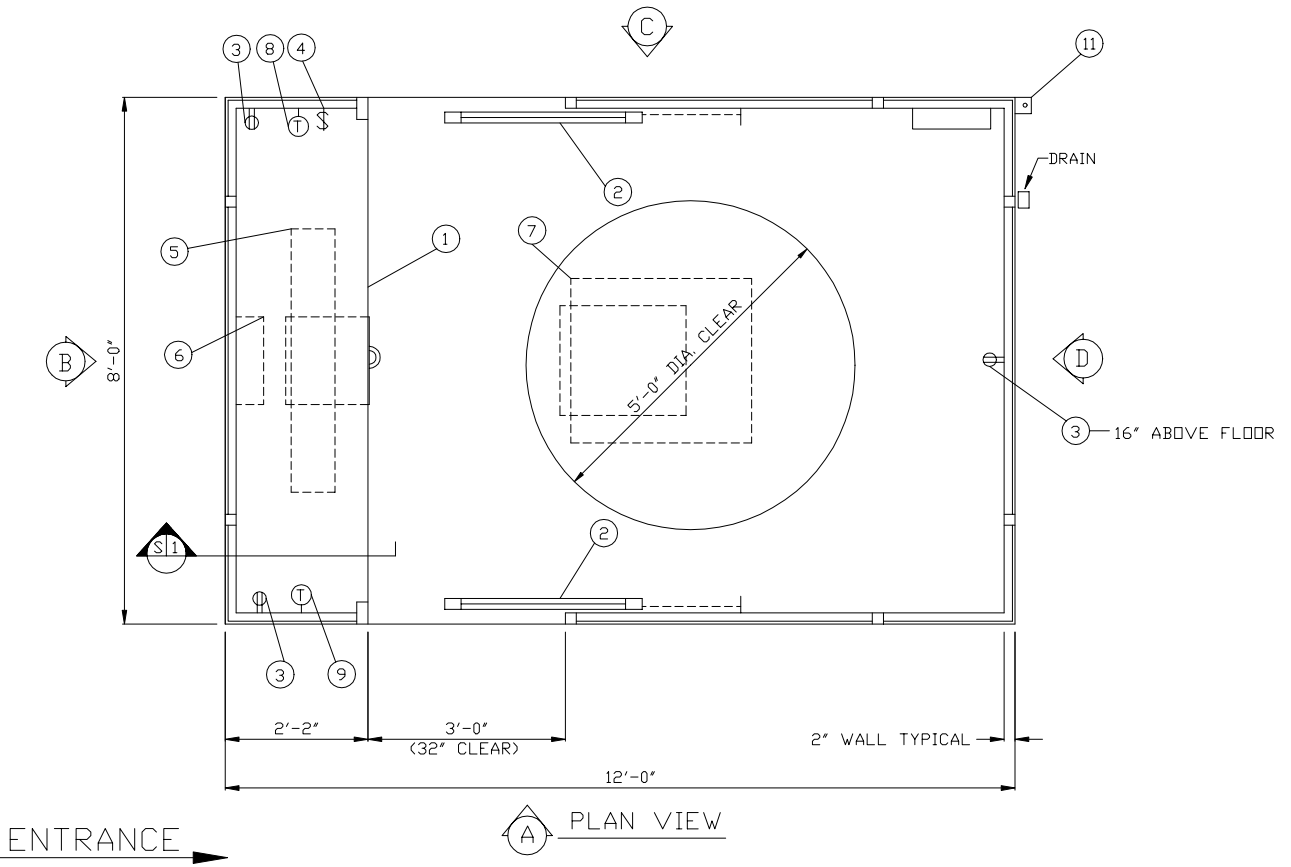
A.D.A. NOTE
 BOOTH MUST BE HANDICAP ACCESSIBLE. THE FOUNDATION MAY BE RECESSED 4" OR A 1:12 RAMP MUST BE PROVIDED.



1. COUNTER- 24" DEEP PAINTED STEEL, OPTIONAL 32" ABOVE FLOOR, WITH STORAGE DRAWER BENEATH.
2. DOOR- 36" WIDE SLIDING STEEL WITH SAFETY GLAZING, HARDWARE, BALL BEARING OVERHEAD HANGERS, MORTISE HOOK BOLT LOCK WITH REMOVABLE KEY CYLINDER, 1-REQ'D. ADDITIONAL OPTIONAL.
3. DUPLEX OUTLET- 120V, 3-REQ'D.
4. LIGHT SWITCH- FOR INTERIOR LIGHTS.
5. LIGHT- OPTIONAL 2-40W. LAMP RECESSED FLUORESCENT FIXTURE WITH LAMPS AND ACRYLIC LENS, 1 REQ'D. ADDITIONAL OPTIONAL.
6. HEATER- OPTIONAL 240V./5600W. FAN FORCED HEATER WITH WALL MOUNTED THERMOSTAT.
7. OPTIONAL AIR CONDITIONER- 13,500 BTU/120V ROOF MOUNTED WITH WALL MOUNTED THERMOSTAT CONTROL.
8. THERMOSTAT- HEATER TEMPERATURE CONTROL.
9. THERMOSTAT- FOR OPTIONAL AIR CONDITIONER TEMPERATURE CONTROL.
10. CIRCUIT BREAKER BOX- 100AMP RATED, MAIN BREAKER IS INCLUDED.
11. ANCHOR CLIPS- 3" X 3", 4-REQ'D., ONE EACH CORNER. ANCHOR BOOTH AFTER FINAL LOCATION. ANCHOR BOLTS NOT INCLUDED.

NOTE: PAR-KUT BOOTHS ARE OF SINGLE UNIT WELDED GALVANIZED STEEL CONSTRUCTION, FACTORY ASSEMBLED AND DELIVERED SET UP. FAILURE TO SECURELY ANCHOR BOOTH MAY RESULT IN OVERTURNING OF UNIT AND SERIOUS INJURY TO OCCUPANT.

- A. GLAZING- OPTIONAL 1/4" #5-114 TEMPERED STERLING SILVER ON BLUE OUTBOARD, 1/2" AIRSPACE, 1/4" CLEAR TEMPERED INBOARD. GLAZING STOPS, OPTIONAL CLEAR ANODIZED ALUMINUM.
- B. PAINT- RUST INHIBITIVE PRIMER AND INDUSTRIAL FINISH.
- C. ELECTRICAL- ALL WIRING BY PAR-KUT TO BE #12(MIN) STRANDED COPPER, THHN ENCLOSED IN 1/2"(MIN) E.M.T. PER NATIONAL ELECTRIC CODE. FITTINGS, FIXTURES AND DEVICES ARE U.L. LISTED. ALL WIRING TO TERMINATE AT C.B. PANEL. ALL CIRCUITS HAVE GREEN GROUND WIRE.
- D. CANOPY OVERHANG- 3" ON ALL SIDES.
- E. LIFTING RING(S) PROVIDED IN ROOF.
- F. NO ON SITE WORK BY PAR-KUT.



NOTE: THIS PRINT AND DESIGN ARE THE PROPERTY OF PAR-KUT INTERNATIONAL, INC. IT MUST NOT BE REPRODUCED IN ANY MANNER, NOR SHALL IT BE SUBMITTED TO OUTSIDE PARTIES FOR EXAMINATION WITHOUT OUR CONSENT. IT SHALL BE USED ONLY AS A MEANS OF REFERENCE TO WORK DESIGNED AND FURNISHED BY PAR-KUT. PAR-KUT RESERVES THE RIGHT TO MAKE CHANGES TO DESIGN FOR ENGINEERING PURPOSES WITHOUT NOTICE. REVISIONS MAY NOT BE NOTED.

PAR-KUT INTERNATIONAL, INC.
 40961 Production Drive
 Harrison Twp, Mich.
 48045-1351
 PH. (810) 468-2947

DWG#	0015	SHEET	A-1
#128P-12/1/12			
SCALE	NTS	DRAWN BY	DLT
DATE	5-30-2000	SIZE	8' X 12'
CHK'D BY:		SALES REPRESENTATIVE	

A/E NOTES
 PAINT COLOR: _____