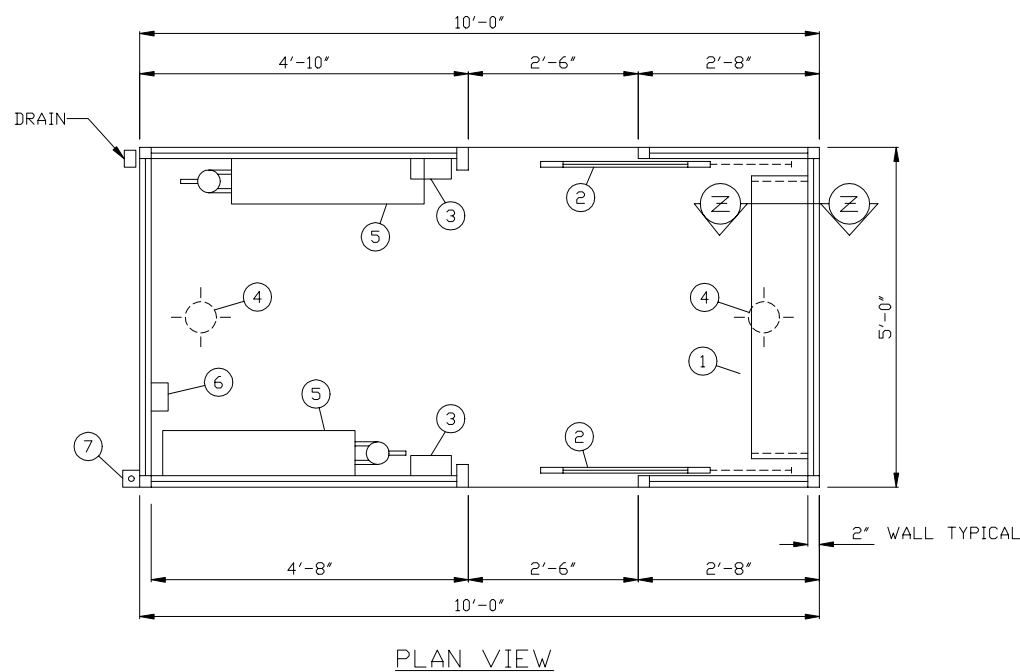


1. COUNTER- 12" DEEP PAINTED GALVANIZED STEEL.
2. DOOR- 30" WIDE, SLIDING ALUMINUM WITH WEATHER-STRIPPING, BALL BEARING HANGERS, SAFETY GLAZING, HEAVY DUTY TRACK, LOCK, & HARDWARE. 2-REQ'D.
3. OPTIONAL EXPLOSION PROOF 3-WAY LIGHT SWITCH. 2-REQ'D.
4. OPTIONAL EXPLOSION PROOF 100 WATT LAMP INCANDESCENT LIGHT FIXTURE. 2-REQ'D.
5. OPTIONAL EXPLOSION PROOF FOSTORIA 120V/1800 WATT HEATER. 2-REQ'D.
6. OPTIONAL EXPLOSION PROOF JUNCTION BOX MOUNTED ON WALL.
7. ANCHOR CLIP- 3" X 3" STEEL WELDED TO BASE AT GRADE WITH 1" ANCHOR BOLT HOLE. 4-REQ'D ANCHOR BOOTH AFTER FINAL LOCATION. ANCHOR BOLTS NOT INCLUDED.

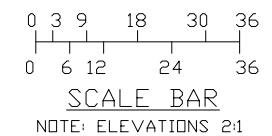
NOTE: PAR-KUT BOOTHS ARE OF SINGLE UNIT WELDED GALVANIZED STEEL CONSTRUCTION, FACTORY ASSEMBLED AND DELIVERED SET UP. FAILURE TO SECURELY ANCHOR BOOTH MAY RESULT IN OVERTURNING OF UNIT AND SERIOUS INJURY TO OCCUPANT.

- A. GLAZING TO BE OPTIONAL 1/4" EXTRA DARK GRAY TEMPERED SAFETY GLASS SET IN MILL FINISH ALUMINUM WINDOW FRAMES.
- B. PAINT- A RUST INHIBITIVE PRIMER WITH INDUSTRIAL FINISH.
- C. ELECTRICAL- ALL WIRING BY PAR-KUT TO BE #12(MIN) STRANDED COPPER, THHN ENCLOSED IN 1/2"(MIN) RIGID PER NATIONAL ELECTRIC CODE. FITTINGS, FIXTURES & DEVICES ARE U.L. LABELED. ALL WIRING TO TERMINATE AT J-BOX. ALL CIRCUITS HAVE GREEN GROUND WIRE.
- D. BOOTH WILL HAVE A 3" CANOPY OVERHANG ON ALL SIDES.
- E. LIFTING RING(S) ARE PROVIDED IN ROOF.
- F. NO ON SITE WORK BY PAR-KUT.



NOTE: THIS PRINT AND DESIGN ARE THE PROPERTY OF PAR-KUT INTERNATIONAL, INC. IT MUST NOT BE REPRODUCED IN ANY MANNER, NOR SHALL IT BE SUBMITTED TO OUTSIDE PARTIES FOR EXAMINATION WITHOUT OUR CONSENT. IT SHALL BE USED ONLY AS A MEANS OF REFERENCE TO WORK DESIGNED AND FURNISHED BY PAR-KUT. PAR-KUT RESERVES THE RIGHT TO MAKE CHANGES TO DESIGN FOR ENGINEERING PURPOSES WITHOUT NOTICE. REVISIONS MAY NOT BE NOTED!

PAR-KUT INTERNATIONAL, INC.
40961 Production Drive
Harrison Twp, Mich.
48045-1351
PH. (810) 468-2947



DWG# 0006		
#10500-EXPL		
SCALE	DRAWN BY	REVISED
NTS	AJP / DLT	
DATE	SIZE	QTY
7-25-2000	5' X 10'	
CHK'D BY:	REVISION(S) CHK'D BY:	

A/E NOTES	
PAINT COLOR:	