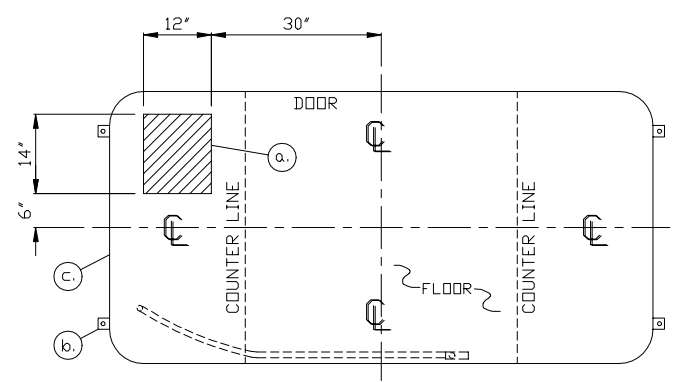


- a. 12" X 14" SLOT IN FLOOR FOR ELECTRIC SERVICE ENTRANCE TO C.B. PANEL ABOVE
- b. 2" X 2" X 1/4" MIN. ANCHOR CLIP WITH 3/4" ANCHOR BOLT HOLE, 4-REQ'D. ONE EACH CORNER. ANCHOR BOOTH AFTER FINAL LOCATION. ANCHOR BOLTS NOT INCLUDED
- c. OUTER EDGE OF BASE

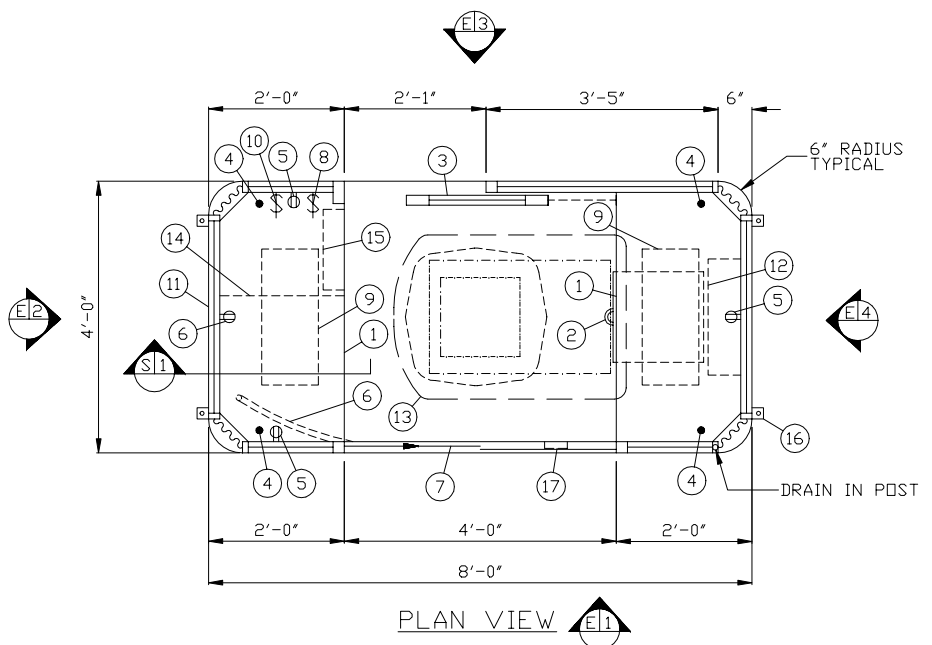


NOTE: PROVIDE 120/208V. 1Ø-3 WIRE SERVICE WITH GROUND.  
SERVICE ENTRANCE/ANCHOR BOLT LAYOUT

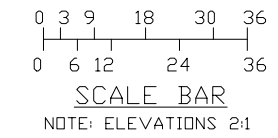
1. COUNTER- OPTIONAL 22" DEEP GALVANIZED STEEL WITH OPTIONAL 1/2" PARTICLE BOARD AND OPTIONAL PLASTIC LAMINATE TOP & EDGE MOUNTED OPTIONAL 32" ABOVE CARPET, 1-REQ'D ADDITIONAL OPTIONAL.
2. STORAGE DRAWER MOUNTED BELOW COUNTER.
3. DOOR- 25" WIDE, SLIDING OPTIONAL STEEL WITH WEATHER-STRIPPING, BALL BEARING HANGERS, SAFETY GLAZING, HEAVY DUTY TRACK, LOCK HARDWARE.
4. 1-1/4" HOLE IN COUNTER FOR DROP CORDS, 1-REQ'D ADDITIONAL OPTIONAL.
5. DUPLEX OUTLET- MOUNTED ABOVE COUNTER, 1-REQ'D. ADDITIONAL OPTIONAL.
6. OPTIONAL ISOLATED GROUND SINGLE RECEPTACLE MOUNTED ABOVE COUNTER.
7. OPTIONAL ROLLER CASHIER WINDOW.
8. LIGHT SWITCH MOUNTED ABOVE COUNTER FOR INTERIOR LIGHTS.
9. LIGHT- 2-20 WATT FLUORESCENT OPTIONAL RECESSED LIGHT FIXTURE WITH LENS, 1-REQ'D ADDITIONAL OPTIONAL.
10. OPTIONAL SINGLE POLE DOUBLE THROW TOGGLE SWITCH WITH INDICATOR LIGHTS FOR RED/GREEN TRAFFIC LIGHT.
11. OPTIONAL RED/GREEN TRAFFIC LIGHT WITH LENSES RECESSED IN FASCIA, LASHMAR FLUSH-NS-BL4.
12. HEATER- 208V./4,200 WATT FAN FORCED WITH INTEGRAL THERMOSTAT CONTROL.
13. OPTIONAL AIR CONDITIONER- 120V./13,500 BTU ROOF MOUNTED WITH INTEGRAL THERMOSTAT CONTROL.
14. ELECTRICAL CABINET WITH ACCESS PANEL.
15. C.B. PANEL- 12 SPACE 120/208V. 1Ø-3 WIRE WITH GROUND BAR. 100 AMP MAIN BREAKER IS INCLUDED.
16. ANCHOR CLIP- 2" X 2" X 1/4" MIN. STEEL WELDED TO BASE AT GRADE WITH 3/4" ANCHOR BOLT HOLE. 4-REQ'D. ANCHOR BOOTH AFTER FINAL LOCATION. ANCHOR BOLTS NOT INCLUDED.
17. OPTIONAL 4" X 4" JUNCTION BOX IN WALL WITH OPTIONAL 3/4" RACEWAY UNDER FLOOR TO FLOOR SLOT ACCESS.

NOTE: PAR-KUT BOOTHS ARE OF SINGLE UNIT WELDED GALVANIZED STEEL CONSTRUCTION, FACTORY ASSEMBLED AND DELIVERED SET UP. FAILURE TO SECURELY ANCHOR BOOTH MAY RESULT IN OVERTURNING OF UNIT AND SERIOUS INJURY TO OCCUPANT.

- A. GLAZING TO BE OPTIONAL GRAY TINTED TEMPERED SAFETY GLAZING WITH STEEL EXTERIOR WINDOW FRAMES AND ALUMINUM INTERIOR GLAZING STOPS.
- B. PAINT- A RUST INHIBITIVE PRIMER WITH AN INDUSTRIAL FINISH.
- C. ELECTRICAL- ALL WIRING BY PAR-KUT TO BE #12(MIN) STRANDED COPPER, THHN ENCLOSED IN 1/2"(MIN) E.M.T. PER NATIONAL ELECTRIC CODE. FITTINGS, FIXTURES & DEVICES ARE U.L. LABELED. ALL WIRING TO TERMINATE AT C.B. PANEL. ALL CIRCUITS HAVE GREEN GROUND WIRE.
- D. BOOTH WILL NOT HAVE A CANOPY OVERHANG.
- E. LIFTING RING(S) ARE PROVIDED IN ROOF.
- F. NO ON SITE WORK BY PAR-KUT.



PLAN VIEW



NOTE: THIS PRINT AND DESIGN ARE THE PROPERTY OF PAR-KUT INTERNATIONAL, INC. IT MUST NOT BE REPRODUCED IN ANY MANNER, NOR SHALL IT BE SUBMITTED TO OUTSIDE PARTIES FOR EXAMINATION WITHOUT OUR CONSENT. IT SHALL BE USED ONLY AS A MEANS OF REFERENCE TO WORK DESIGNED AND FURNISHED BY PAR-KUT. PAR-KUT RESERVES THE RIGHT TO MAKE CHANGES TO DESIGN FOR ENGINEERING PURPOSES WITHOUT NOTICE. REVISIONS MAY NOT BE NOTED.

PAR-KUT INTERNATIONAL, INC.  
40961 Production Drive  
Harrison Twp, Mich.  
48045-1351  
PH. (810) 468-2947



DWG# 0000 SHEET A-1  
#74CEN-NASH

A/E NOTES		
PAINT COLOR: _____		

SCALE	DRAWN BY	REVISED
NTS	AJP / DLT	
DATE	SIZE	QTY
7-24-2000	4' X 8'	
CHK'D BY:	SALES REPRESENTATIVE	